



Canon ZR70MC Side Panel Replacement

Use this guide to remove the left side panel of the ZR70MC camcorder. You will need to remove the side panel to replace the lens.

Written By: khalid clarke



INTRODUCTION

The panels of the Canon ZR70MC hold the camcorder together. The side panel in particular protects the main circuit board of the camcorder and also protects the imaging films located inside. This guide will show you how to take off the side panel, allowing easier access to the LED screen and lens component of the Canon ZR70MC. You should also have a designated location for the small parts of the camcorder so that you do not lose any pieces. Also, do not damage any wires that you come across.

TOOLS:

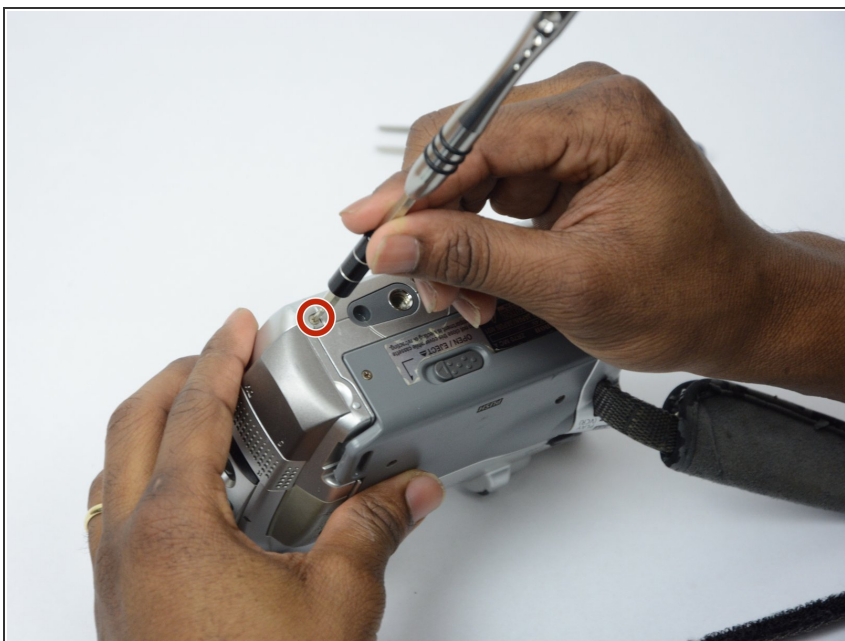
- [Tweezers](#) (1)
 - [64 Bit Driver Kit](#) (1)
-

Step 1 — Front Panel



- Unscrew the 3.35mm screw.

Step 2



- Turn the ZR70MC so that you can see the bottom of the camcorder.
- Unscrew the 3.35 mm located in the top left portion of the camera.

Step 3



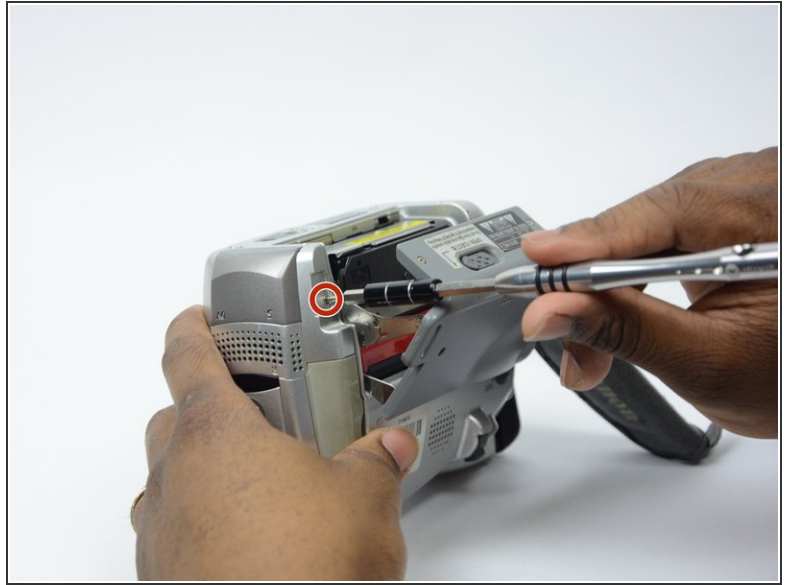
- Turn the camera on the side and remove the cover for the audio inputs. There is a 2.65 mm screw located behind the cover.
- Remove the 2.65 mm screw.

Step 4



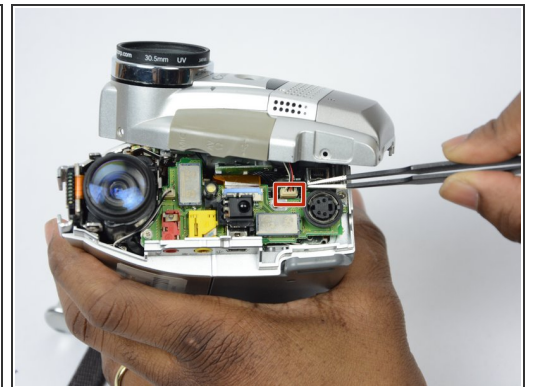
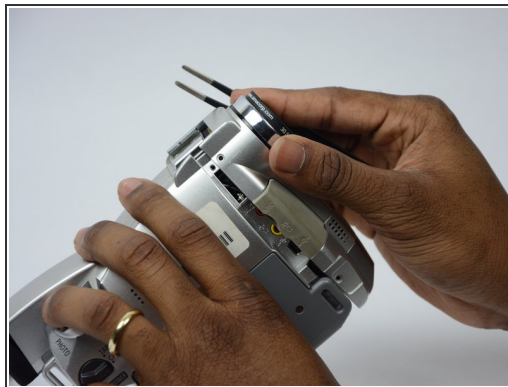
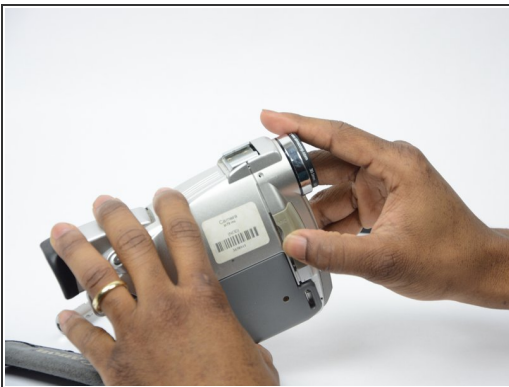
- Remove the cover located on the front of the camcorder and remove the cover by pulling on the bottom groove.
- Locate and remove the two 3.35 mm screws.

Step 5



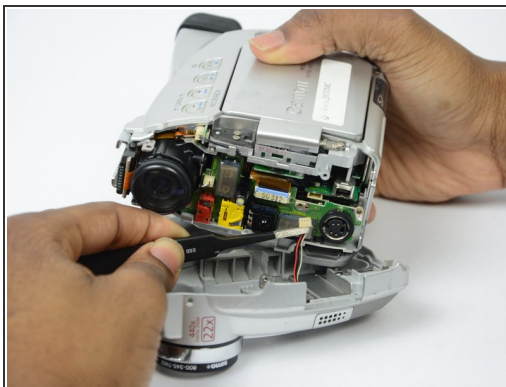
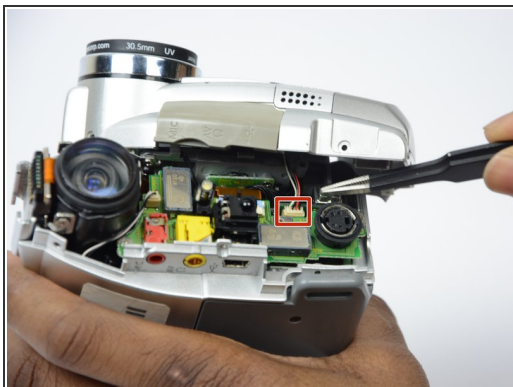
- Turn the camcorder so that the bottom is facing up and open the tape cassette compartment.
- There is one 3.35 mm screw located under the tape cassette panel on the front left side of the camcorder. Remove the screw.

Step 6



- Now that all of the screws are removed, remove the front panel by gently pulling on the front panel.
- ⓘ The speaker will be connected to the main body by a wire. Be careful not to damage this wire.

Step 7



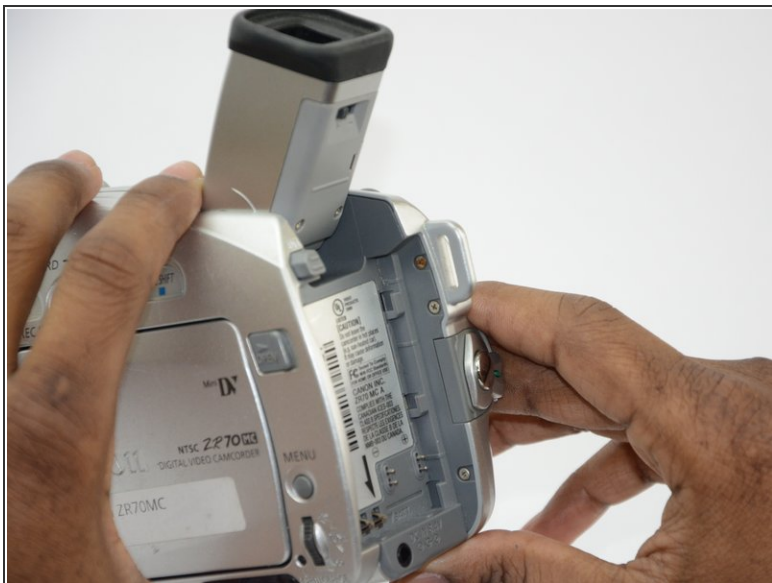
- Use tweezers to gently pull the speaker wire from the main body of the camcorder.
- Pull the front panel completely away from the main body of the camcorder.

Step 8 — Side Panel



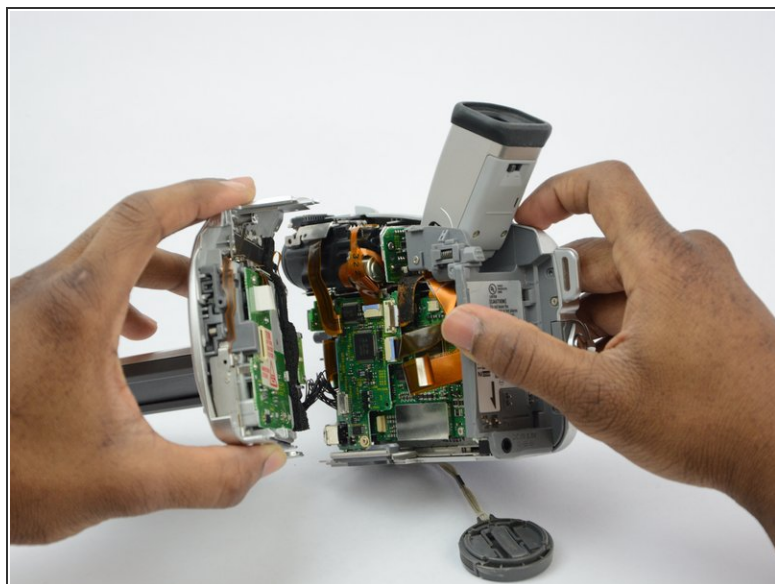
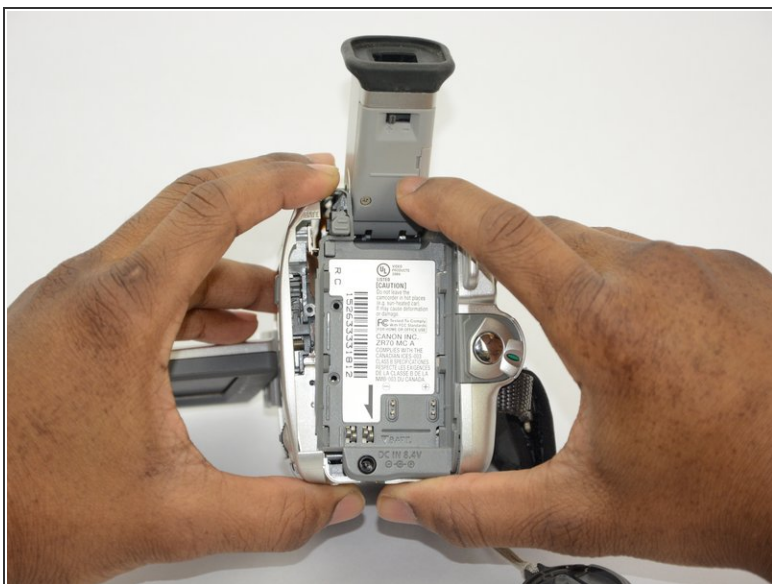
- Remove all 3.75 mm screws from the bottom of the camcorder.

Step 9



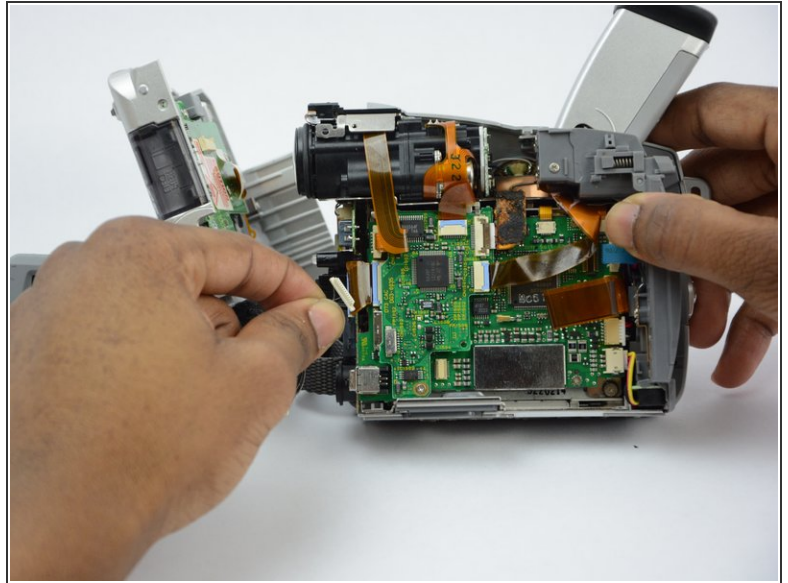
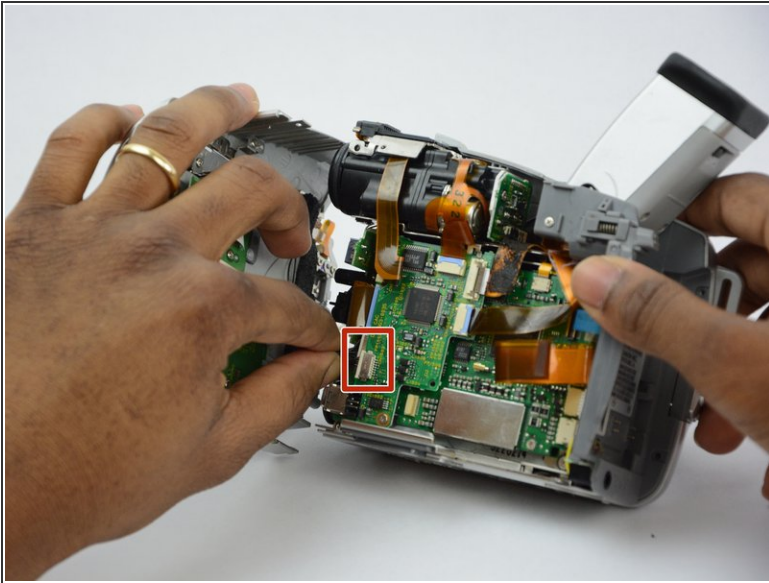
- Turn the camcorder so that the back is facing you.
- Remove the 3.75 mm screws from the back of the camcorder that hold the side panel in place.

Step 10



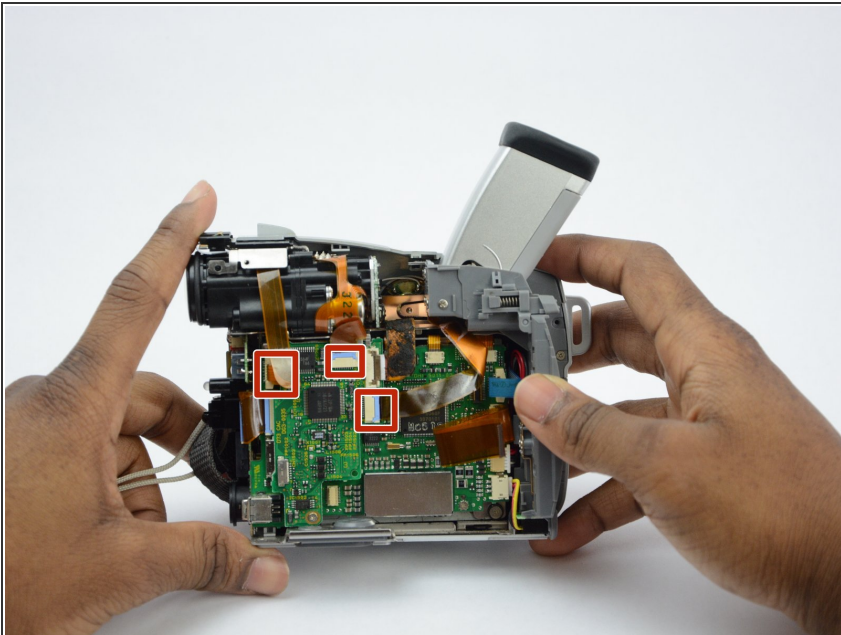
- Now that all of the screws are removed, gently pull off the side panel of the camcorder.

Step 11



- Gently pull the two black wires from their connections. These black wires are the only thing left connecting the side panel to the main body of the camcorder.

Step 12



- Gently pull the orange films out of their connections. This will allow you access to all components of the main body.

To reassemble your device, follow these instructions in reverse order.