



Gateway MS2370 Keyboard Replacement

Instructions for the removal of the keyboard from the Gateway MS2370 Laptop.

Written By: Mathieu Bolduc-Clayton



INTRODUCTION

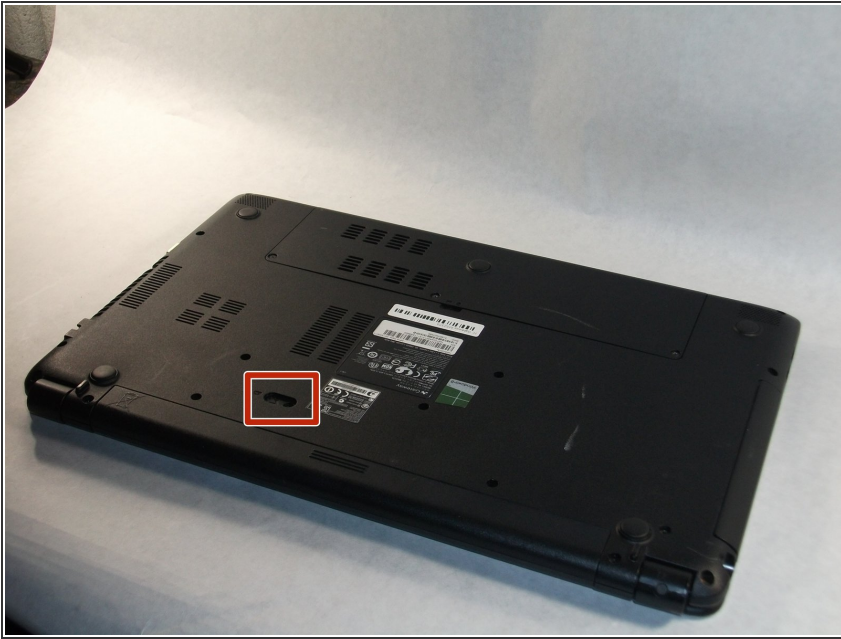
This guide shows the user how to properly remove the keyboard from the Gateway MS2370 Laptop.



TOOLS:

- [Spudger](#) (1)
-

Step 1 — Battery



- Make sure the laptop is turned off and flipped over so that the bottom is facing up. Then, locate the battery clip as shown.

Step 2



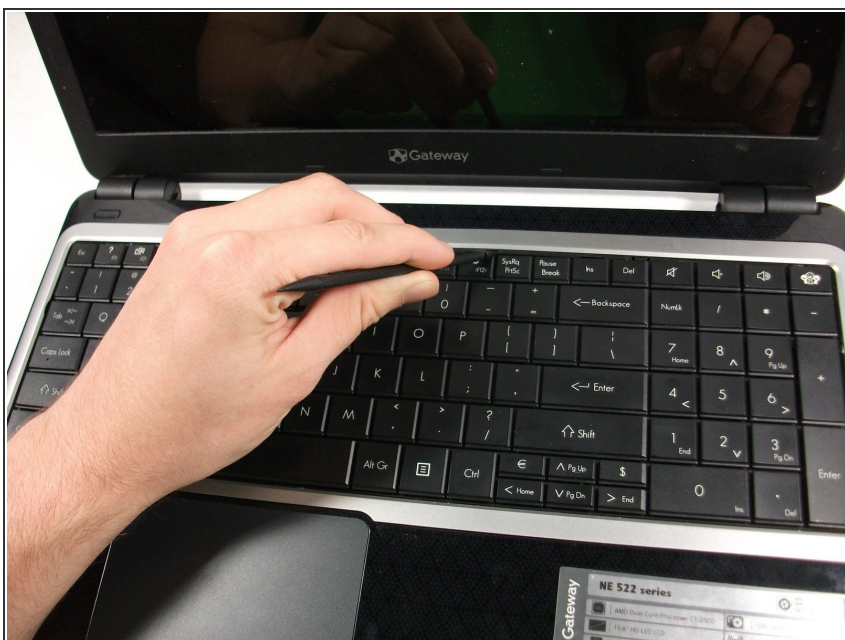
- Either using your fingers or a plastic spudger push the battery clip to the left to release battery.

Step 3



- Pull the battery from the laptop to remove it.

Step 4 — Keyboard



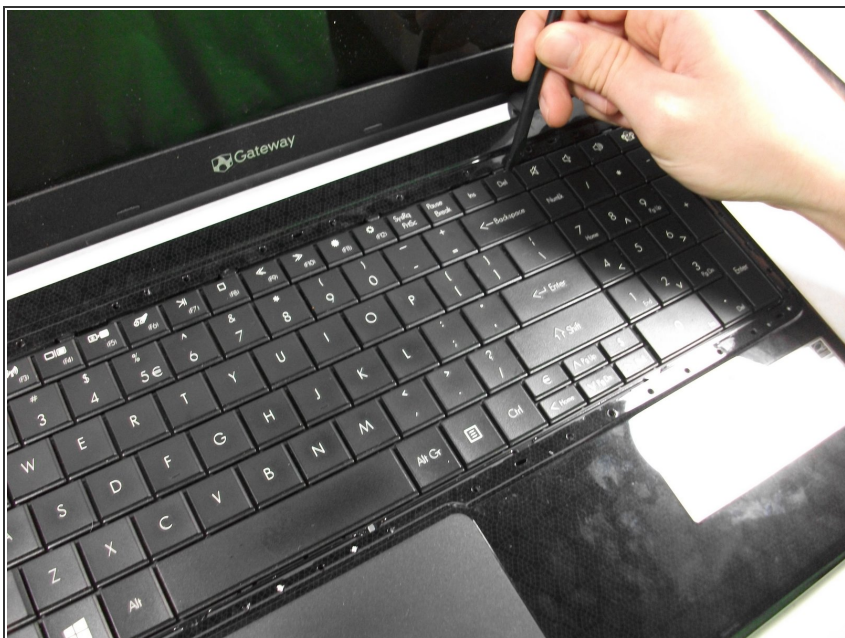
- Take the plastic spudger and pull up the tabs on all four sides of the keyboard molding.

Step 5



- Carefully lift the keyboard molding out.

Step 6



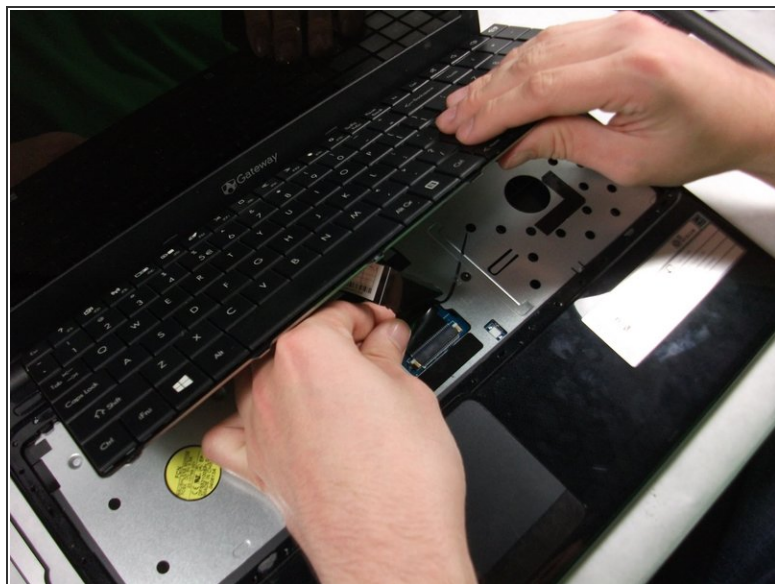
- Use the plastic spudger again to pry the keyboard tabs from the laptop.

Step 7




- Slowly lift the keyboard from the laptop.

Step 8



- Carefully unplug the ribbon cable attached to the motherboard.

 The ribbon cable is extremely delicate, handle with care

Step 9



- Lift and remove the keyboard from the computer.

To reassemble your device, follow these instructions in reverse order.