



Wahl Chrome Pro Power Case Guide

This guide provides steps to remove the outer case of the Wahl Chrome Pro for replacement or for access to the motor, power cord, and switch.

Written By: Ashley Dale



INTRODUCTION

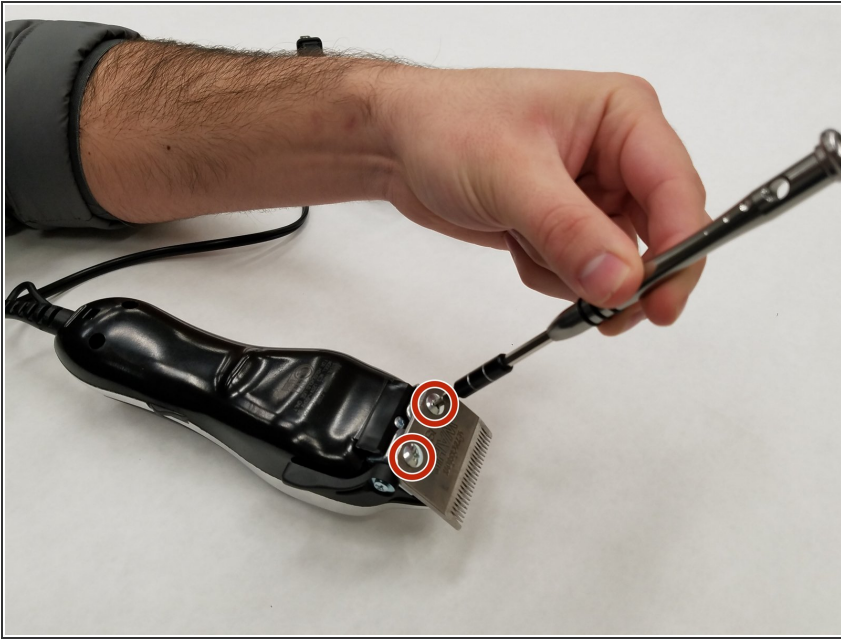
The Wahl Chrome Pro components are protected by an outer plastic body held together by several screws. This guide provides information on how to remove the outer protective case to access various internal components.



TOOLS:

- [JIS #1](#) (1)
 - [Phillips #2 Screwdriver](#) (1)
 - [Spudger](#) (1)
 - [Tweezers](#) (1)
-

Step 1 — Case



- Remove the two 5.0 mm JIS #1 screws to loosen the cutting blades.
- ⚠ Make sure your device is not connected to power before you begin.

Step 2



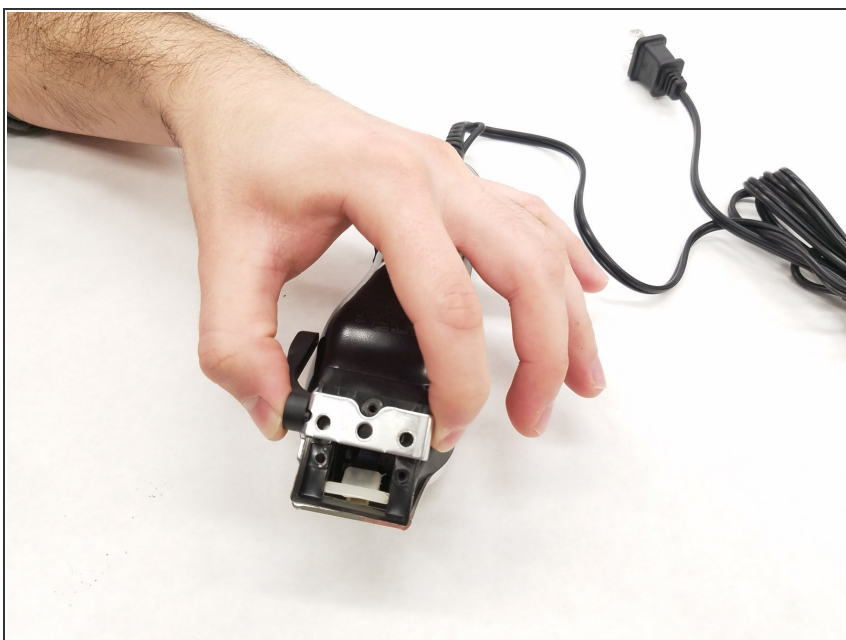
- Lift the bottom blade straight up from the device body to remove it.

Step 3



- Remove the three 9.0 mm JIS #1 screws attaching the base of the blade assembly to the body.

Step 4



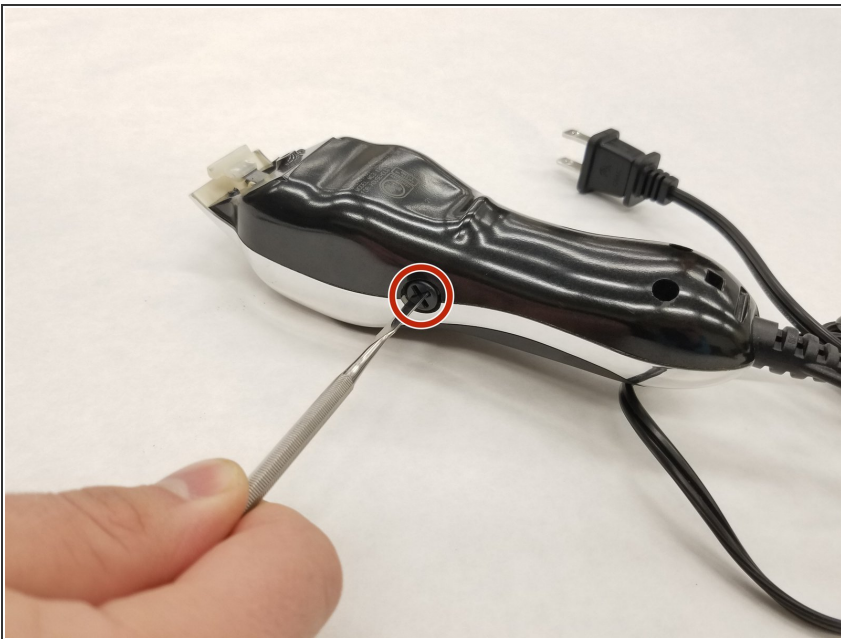
- Lift the base of blade assembly straight up off of the body.

Step 5



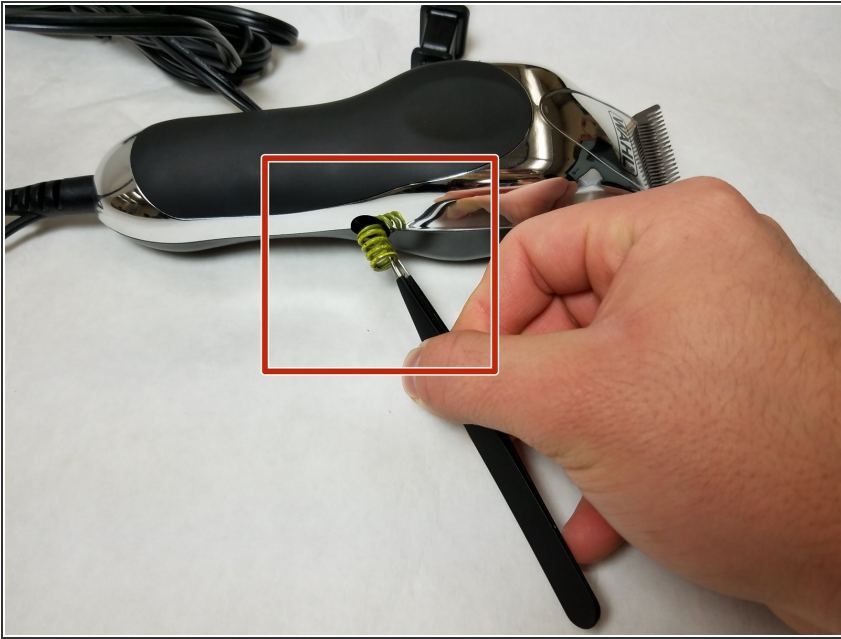
- Remove the two 12.0 mm JIS #1 screws on the back of the device body.

Step 6



- Remove the 13.0 mm Phillips #2 screw on the side of the device body.
- This screw is located on the opposite side of the body from the switch.

Step 7



- Remove the spring on the side of the body using tweezers.

Step 8



- Pry the body case off of the device using a spudger.

To reassemble your device, follow these instructions in reverse order.