



# Logitech Harmony Touch Battery Replacement

This guide will aide you in replacing the battery.

Written By: Lennox Saliva-Rojas

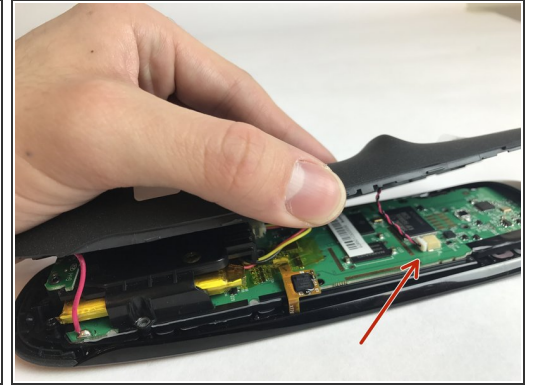




## TOOLS:

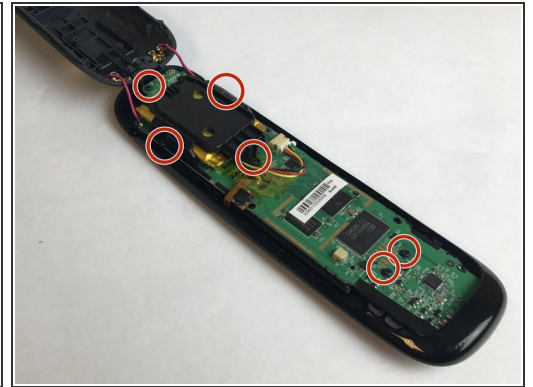
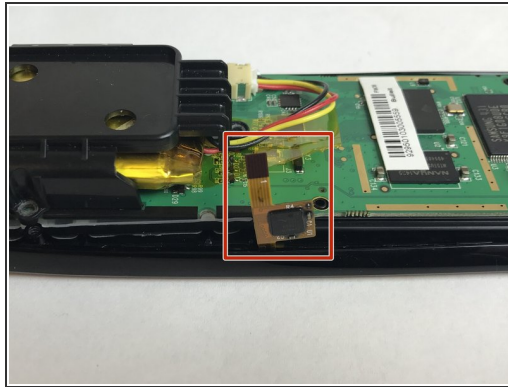
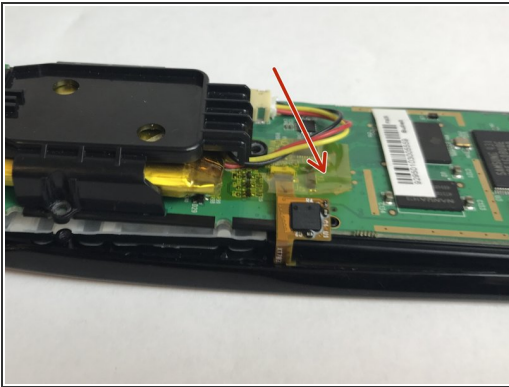
- [iFixit Opening Tools](#) (1)
-

## Step 1 — Battery



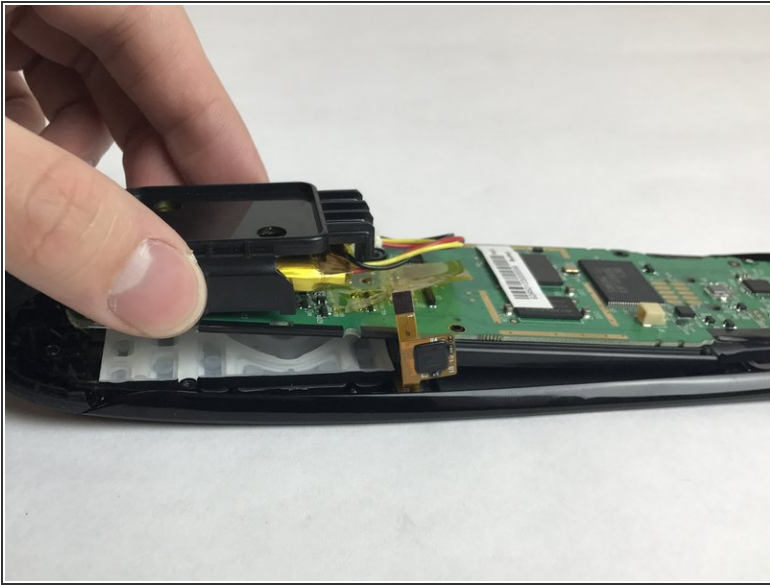
- Open the latch that accesses the charging port
  - Remove the black sticker and remove the screw with the indicated screwdriver
  - Take the plastic opening tool and run it down the side of the remote to pop the case open
- ⚠ While doing this step there are three wires that connect the two pieces, be sure not to rip them out
- Detach the white clamp to partially disconnect the case from the motherboard

## Step 2



- Peel back the thin yellow plastic film and detach the clip found underneath
- Remove the screws that connect the motherboard to the case with the suggested screwdriver

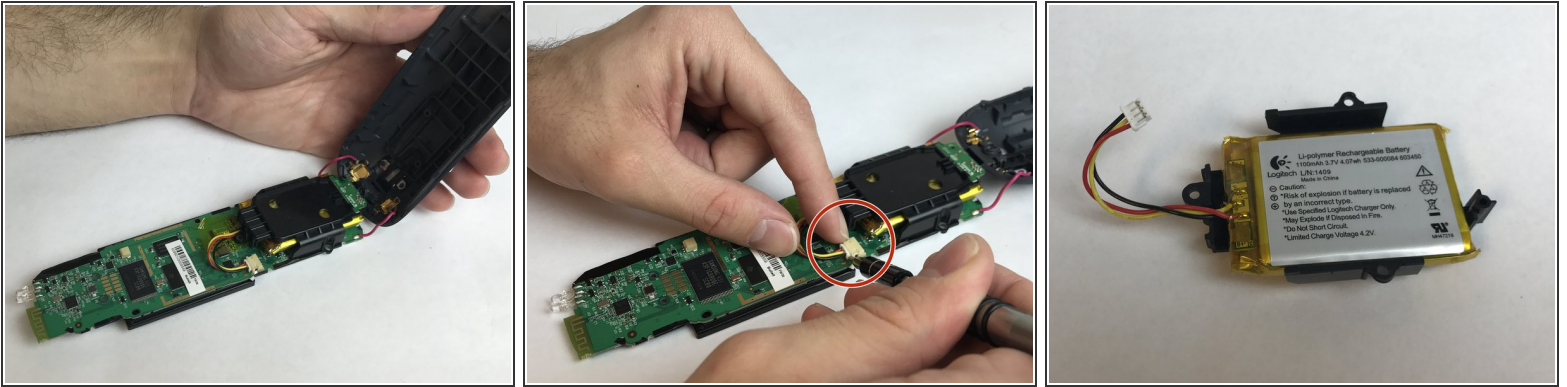
## Step 3



- Next carefully remove the motherboard from the top piece of the case by lifting bottom first then pulling
- ⓘ The motherboard is connected to the bottom part of the case



## Step 4



- Disconnect the clip that connects the battery to the motherboard
- ⓘ Clip has black, red, and yellow wires connected to it
- Remove plastic covering over battery from motherboard
- ⓘ Battery may be glued to the back of plastic gaurd
- If glued to the back of the guard, use metal spudger to carefully pry battery off

To reassemble your device, follow these instructions in reverse order.