



Black and Decker BDH9600CHV Motor Replacement

The motor within the Black and Decker...

Written By: Ivette Muzquiz



INTRODUCTION

The motor within the Black and Decker BDH9600CHV could fail. If that happens this guide will show you how to take the housing apart and extract the motor from the device. After extracting the motor from the device the replacement motor must then be inserted into the device and then the device closed back together.

If the device doesn't work after this, simply take the motor and insert the prongs on the opposite sides that they are inserted into on the circuit board.



TOOLS:

- [Large Needle Nose Pliers](#) (1)
 - [Phillips #0 Screwdriver](#) (1)
 - [4mm Hex Socket](#) (1)
-

Step 1 — Motor



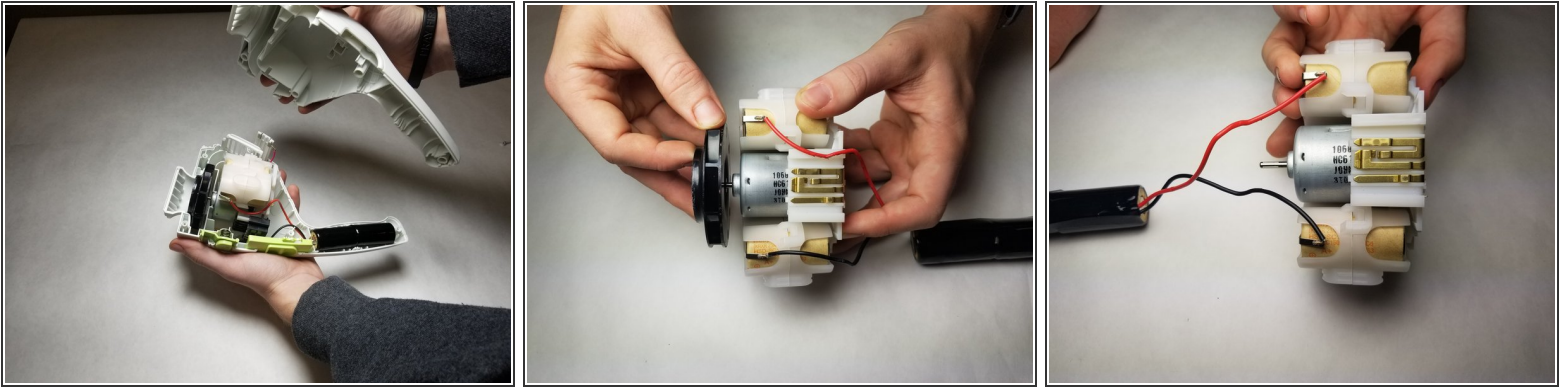
- To remove the filter and housing, press the green button labeled "Filter".

Step 2



- Unscrew and remove all 5 screws using the Phillips 0 screw bit. Each screw is 17.5 mm long.

Step 3



- Pull the housing apart
- ⓘ When you pull apart the housing pieces could fall out. Be sure to keep track of them.
- Remove the motor unit from the housing
- Note that the black disk needs to be firmly pulled it will resist, but can be pulled directly off of the pin if it is pulled hard enough.

Step 4



- Remove the motor from the circuit board.
- The motor makes contact with the board at 2 points. These may be bent or distorted. Straighten them with a pair of needle nose pliers in order to remove.

To reassemble your device, follow these instructions in reverse order.

