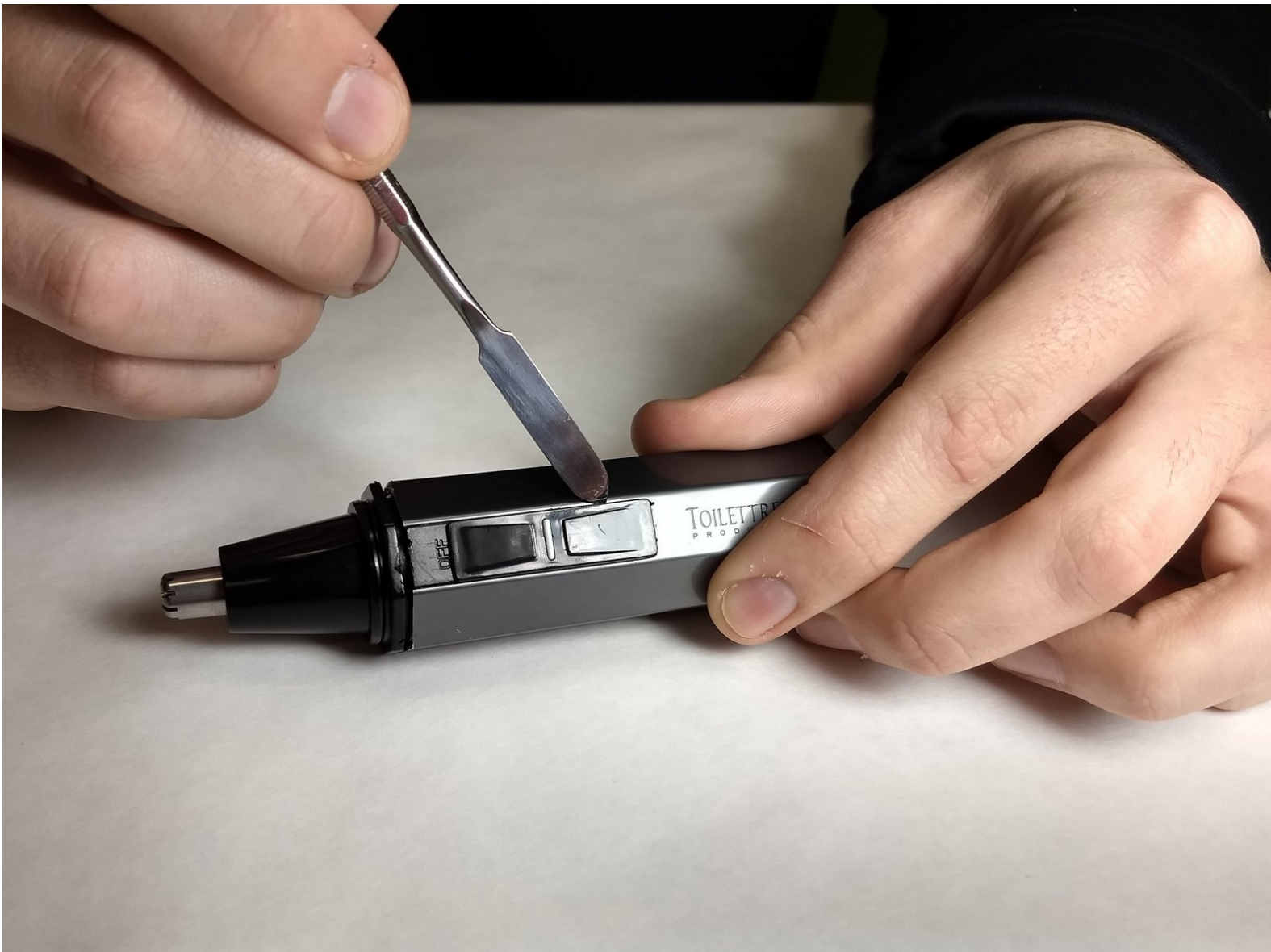




# Toilet Tree TTP-TRIM-1 Power button Replacement

These instructions will enable you to replace the power button on your Toilettree nose and ear trimmer.

Written By: samuel fontanez



# INTRODUCTION

The following guide steps through the process of removing the power button and its components for replacement.



## TOOLS:

- [Metal Spudger](#) (1)
- [Tweezers](#) (1)



## PARTS:

- [AA Batteries](#) (1)

## Step 1 — Battery



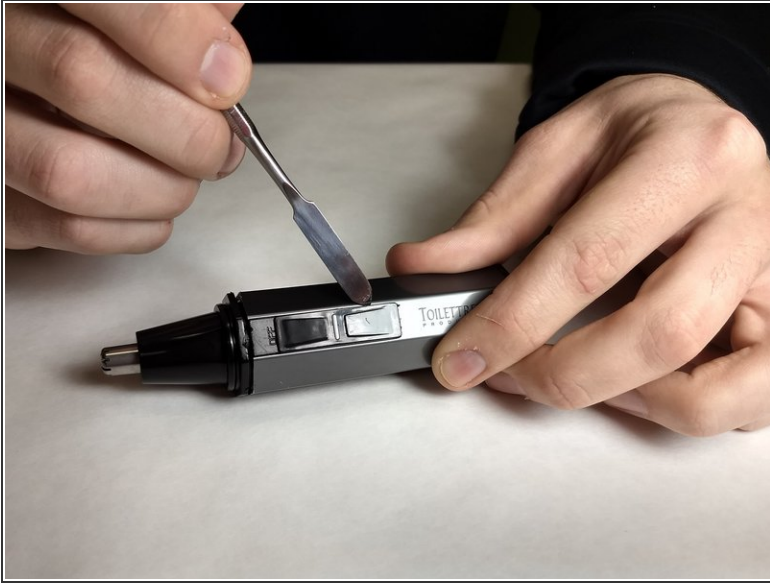
- Twist the battery cap found on the bottom of the device counterclockwise.

## Step 2



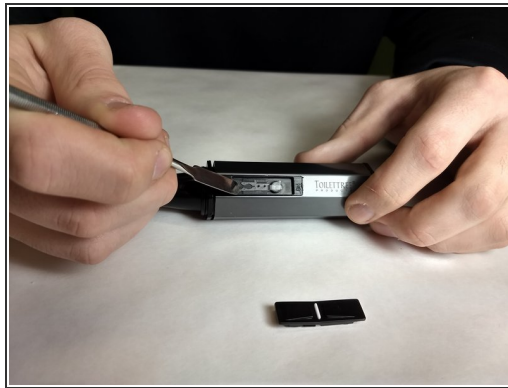
- Remove the battery

### Step 3 — Power button



- Using the metal spudger, wedge underneath the button and gently pry it out.
- Note orientation of the switch, so that it can be replaced properly.

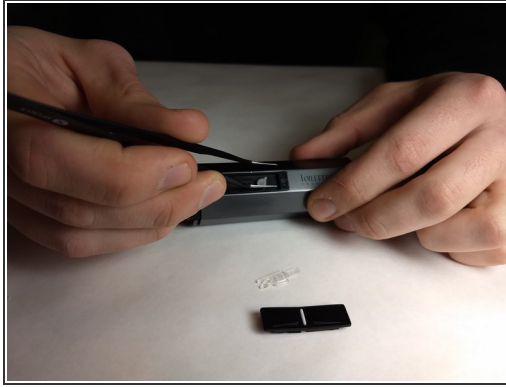
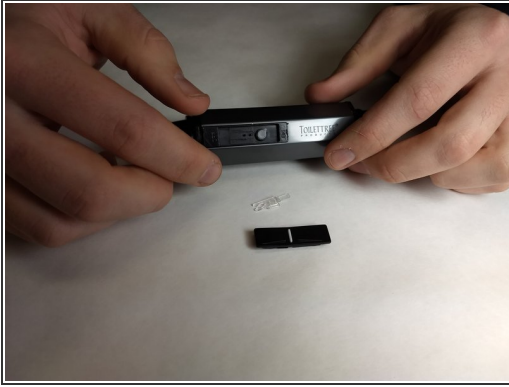
### Step 4



- Underneath the button lies two small components. We will reference them as the o-ring assembly and clear tab. Take note of their orientation.
- Continue disassembly by prying the clear tab upwards.



## Step 5



- Using the tweezers, take the o-ring switch assembly out of the trimmer.

To reassemble your device, follow these instructions in reverse order.