



# Ambient Weather WS-1001-Wifi Battery Replacement

Replacing the internal power storage battery for the Ambient Weather WS-1001-Wifi.

Written By: Taylor Whitaker



## INTRODUCTION

In this fix we will be looking at how to replace the internal battery used to store electrical charge for the device. This will require a Phillips #1 screwdriver, a small plastic tool to remove the LCD screen and to remove the battery.

Good Luck!



### TOOLS:

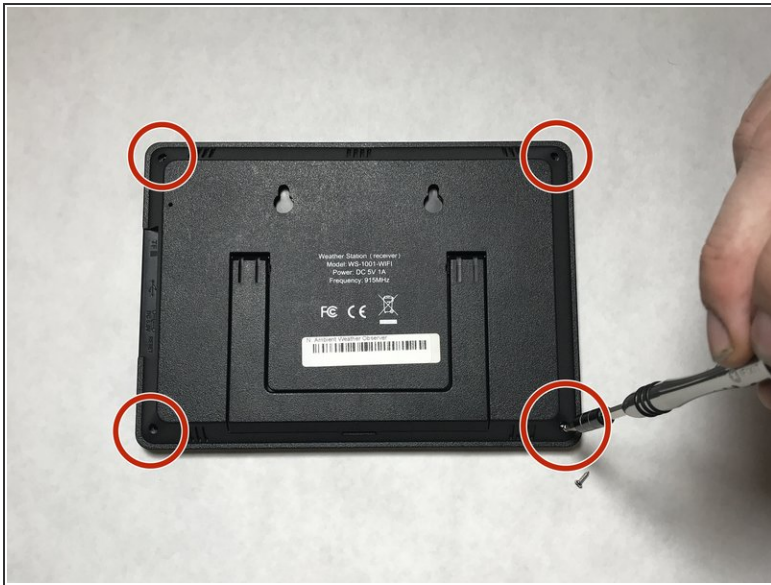
- [Phillips #1 Screwdriver](#) (1)
- [Tweezers](#) (1)
- [iFixit Opening Tools](#) (1)



### PARTS:

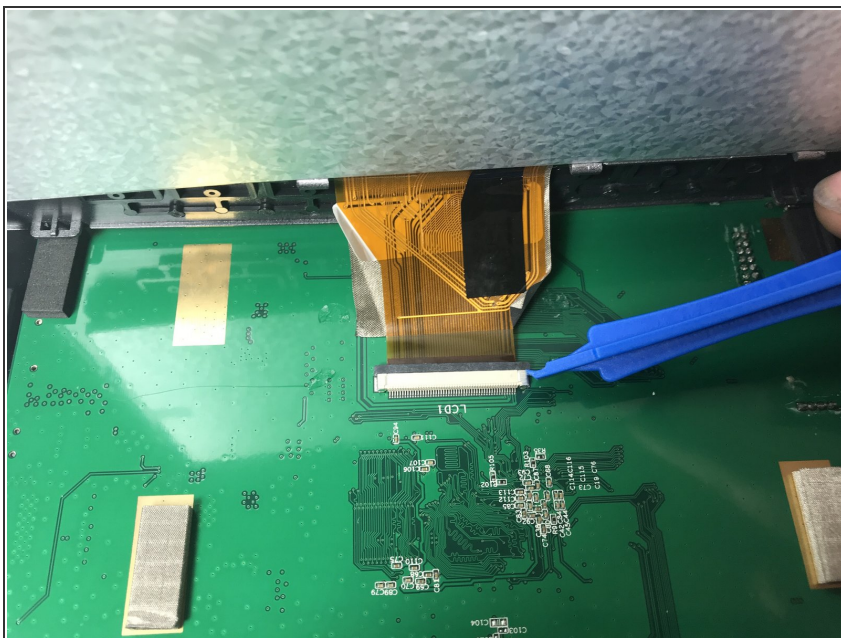
- [CR 1220 Battery](#) (1)

## Step 1 — Battery



- First, unscrew the 4 M2x1.5-7 screws (7mm length) from the back of the device using a number 1 Phillips screwdriver.
- Pry the front silver panel away from the back black panel with a plastic opening tool.

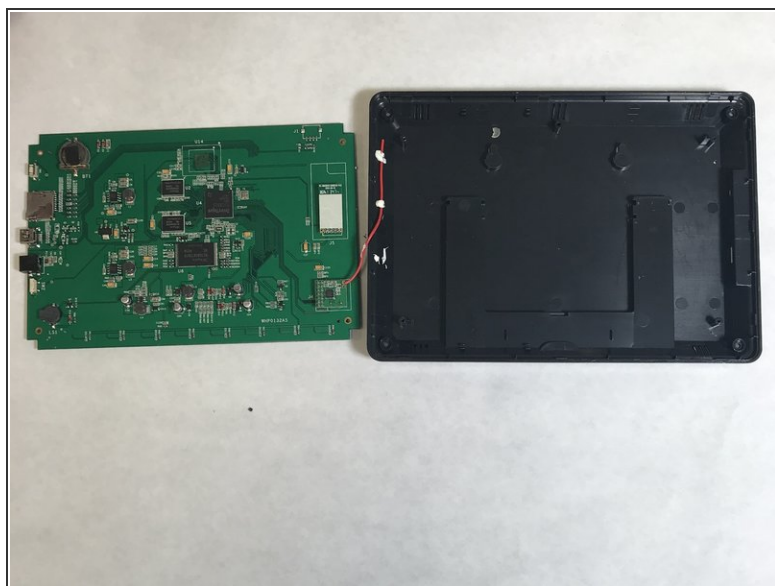
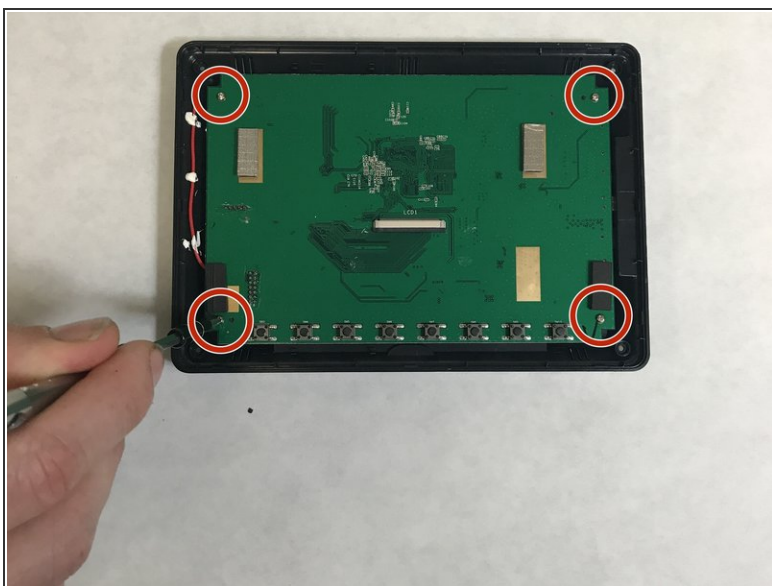
## Step 2



- Next, the ribbon cable needs to be carefully removed from the back of the LCD screen.
- Use a plastic opening tool to press the black bar towards the ribbon and away from the white bar gently. This will release the ribbon.

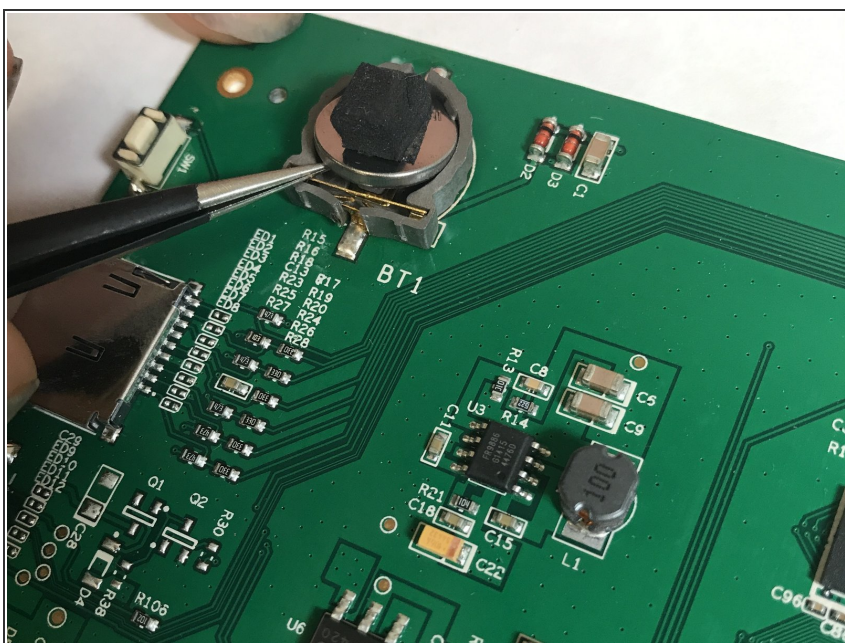


## Step 3



- Remove the 4 M2x1.5-7 screws (7mm length) from the green PCB board.
- This will result in two pieces, the back black cover and the PCB board.

## Step 4



- The battery can then be popped out using precision tweezers and replaced with a new one.

To reassemble your device, follow these instructions in reverse order.