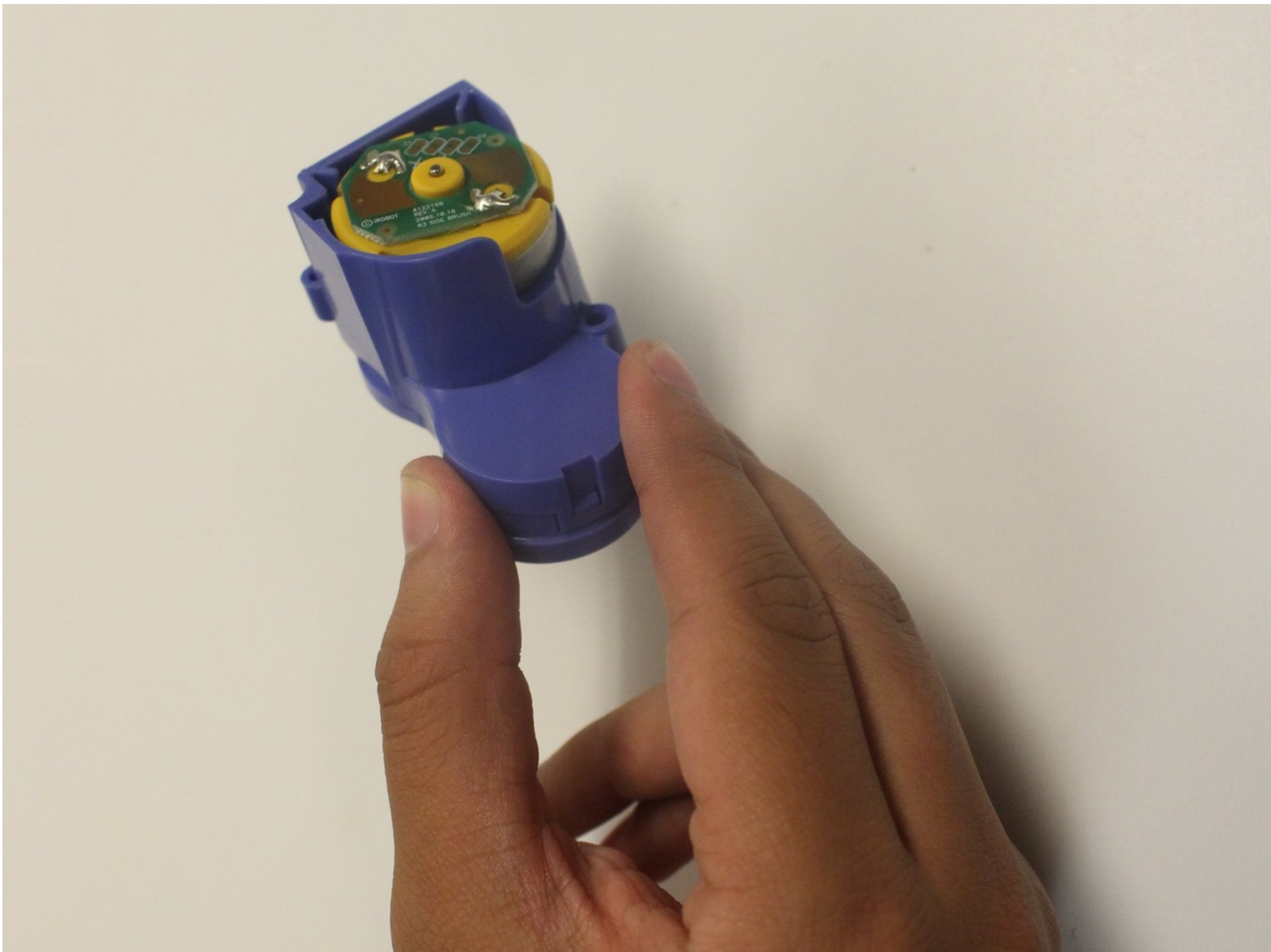




iRobot Roomba 595 Pet Series Side Brush Motor Replacement

This tutorial will show users how to properly change the side motor on their iRobot Roomba 595 Pet Series

Written By: Dale Shirley-Potopsingh



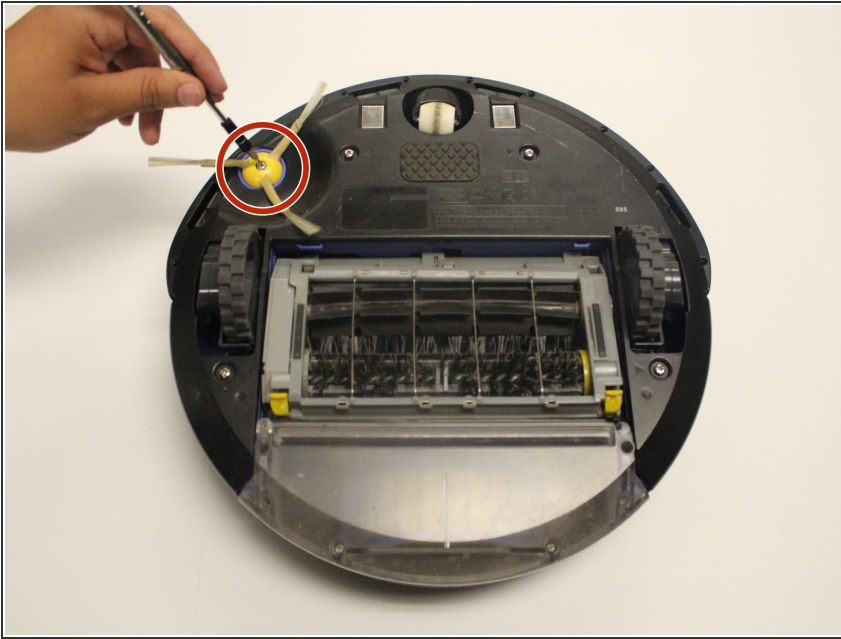
INTRODUCTION

The side motor is very important to the overall function of the Roomba, and without it the Roomba would essentially not work. The replacement of it is a easy task and requires very little work.

TOOLS:

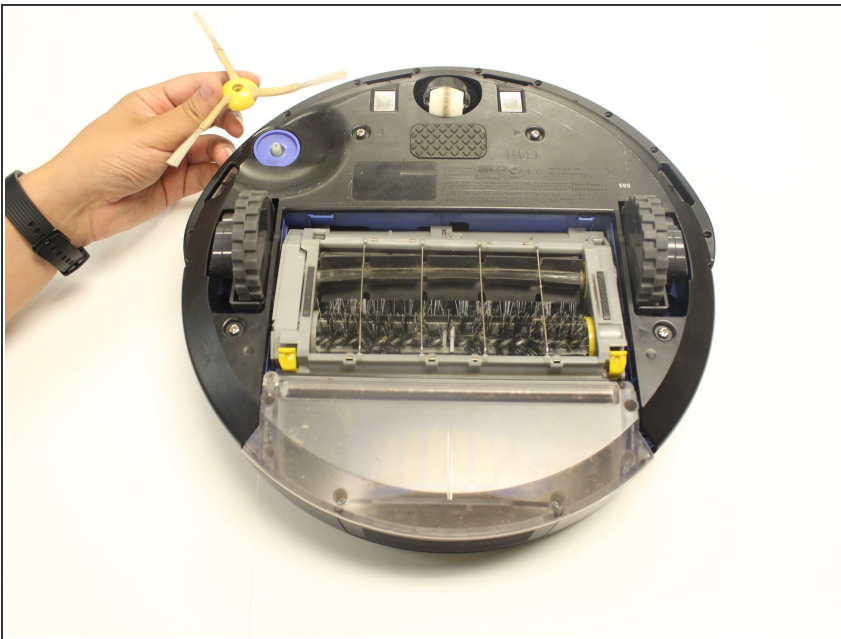
- [Phillips #0 Screwdriver](#) (1)
-

Step 1 — Secondary Brush



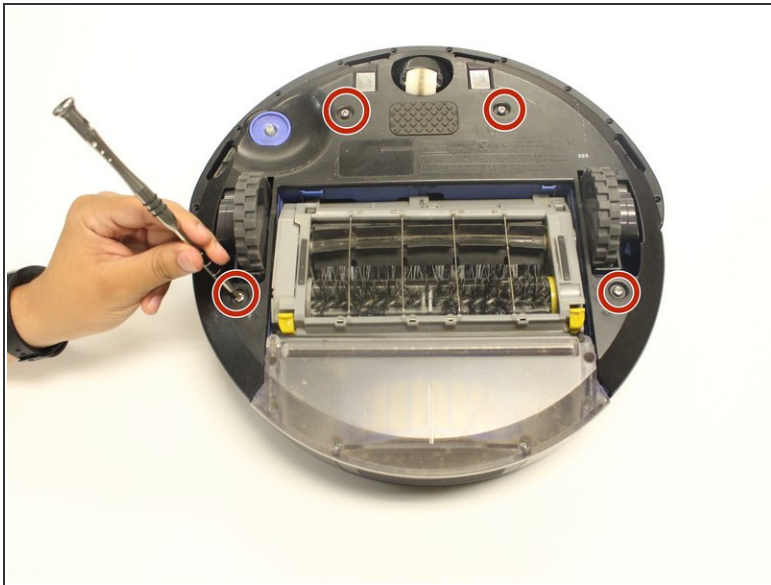
- Flip the Roomba upside down. Using the Phillips #0 screwdriver, carefully remove the 5 mm screw holding the brush in place.

Step 2



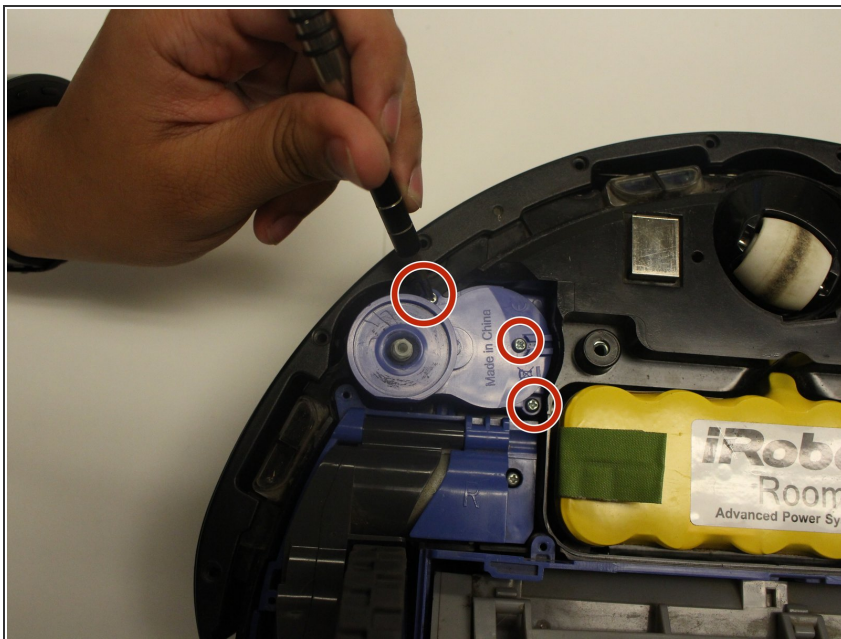
- Gently pull the brush up and remove it from the device.

Step 3 — Side Brush Motor



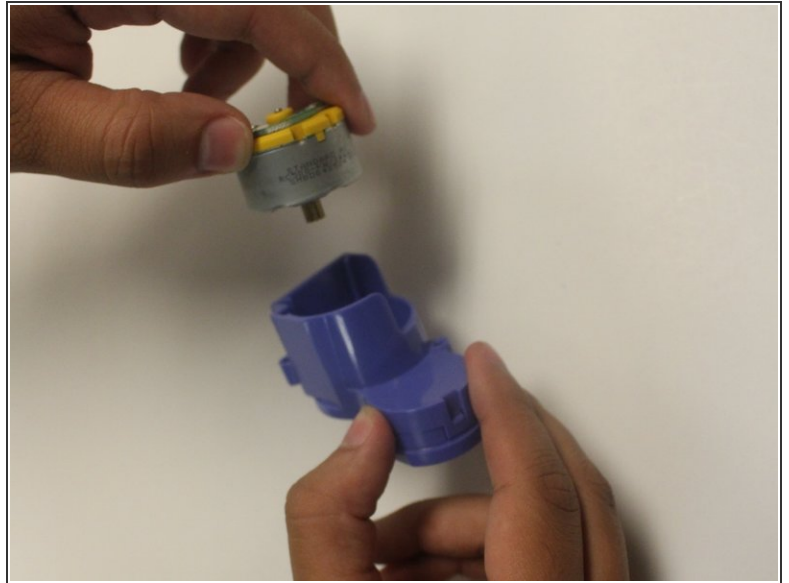
- Unscrew the four 10mm screws on the underside of the Roomba with a Phillips #1 screwdriver.
- Lift the external underside cover accordingly.

Step 4



- Use the Phillips #0 screwdriver bit to remove the three 15mm screws.

Step 5



- Remove the motor from the blue casing.

To reassemble your device, follow these instructions in reverse order.