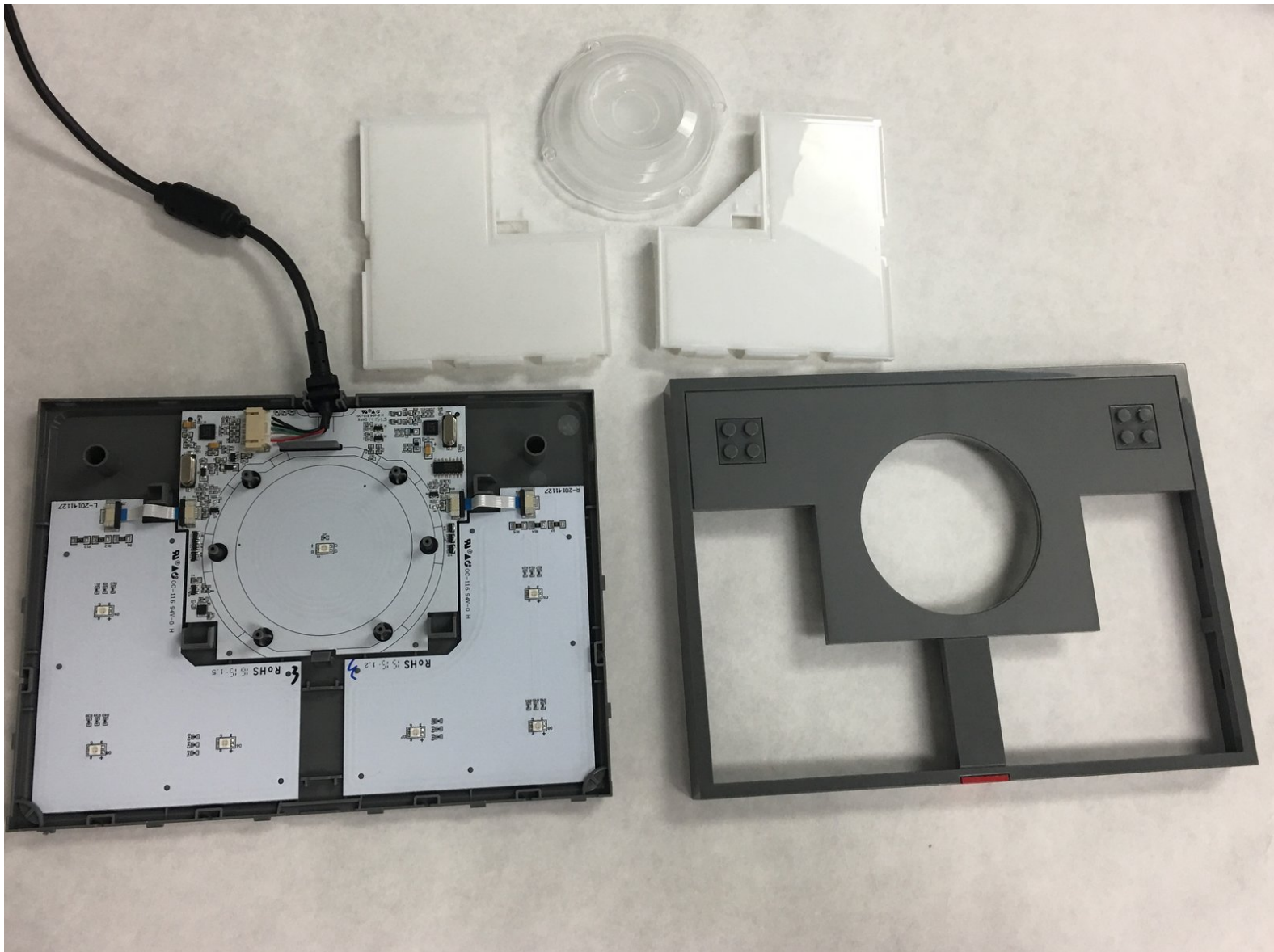




Lego Dimensions Starter Pack Top Cover Parts Replacement

Replace the top cover parts if they become cracked or damaged.

Written By: Alyssa Lach



INTRODUCTION

The top cover, clear circular part, and L-shaped parts sit above the electronics. These parts will need to be removed in order to expose the electronics for replacement.

TOOLS:

- [Metal Spudger](#) (1)
-

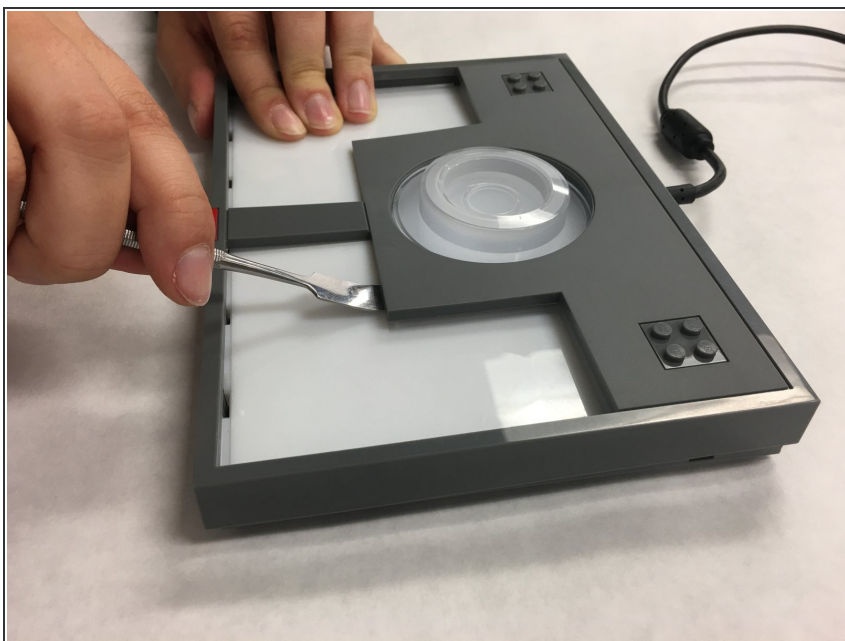
Step 1 — Top Cover Parts



⚠ Be careful not to crack the cover.

- Use the metal spudger to gently pry open the corners of the top cover.

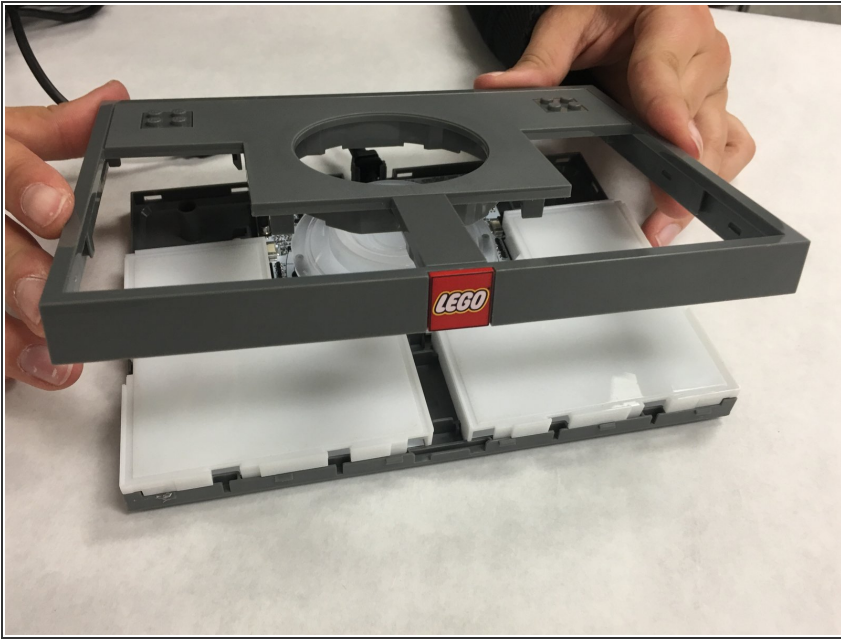
Step 2



⚠ Be careful not to crack the top cover.

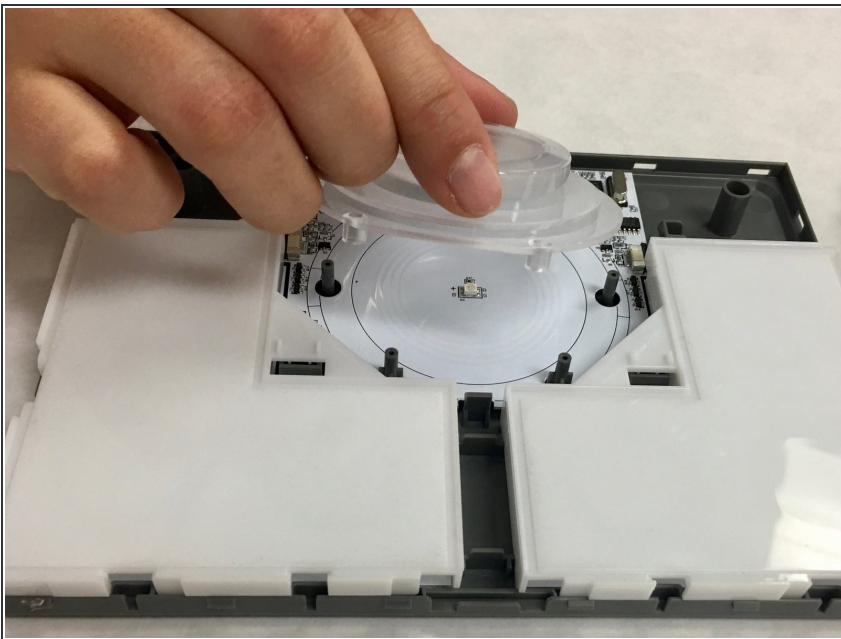
- Use the metal spudger to gently pry up the center of the top cover.

Step 3



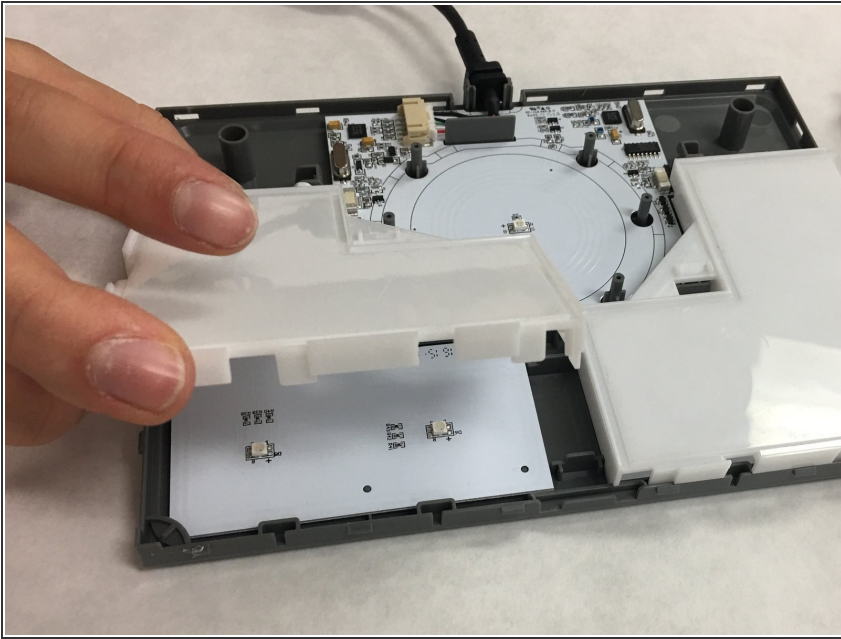
- Pull the top cover off.

Step 4



- Lift up the circular illumination stand and remove it from the toy pad.

Step 5



- Lift up the white L-shaped pieces and remove them from the toy pad.

To reassemble your device, follow these instructions in reverse order.