



Toshiba Satellite C55-A5140 CD Drive Replacement

Replacement Guide for CD drive in the Toshiba Satellite C55-A5140.

Written By: Cameron Chapman



INTRODUCTION

A common problem with laptop computers is that the CD drive can stop working. Whether that is from physical damage, defects, or a malfunction of the CD drive. When the CD drive stops working properly it can be replaced relatively easy.



TOOLS:

- [iFixit Opening Tools](#) (1)
 - [Philips Head Screwdriver: Size J1](#) (1)
-

Step 1 — Battery



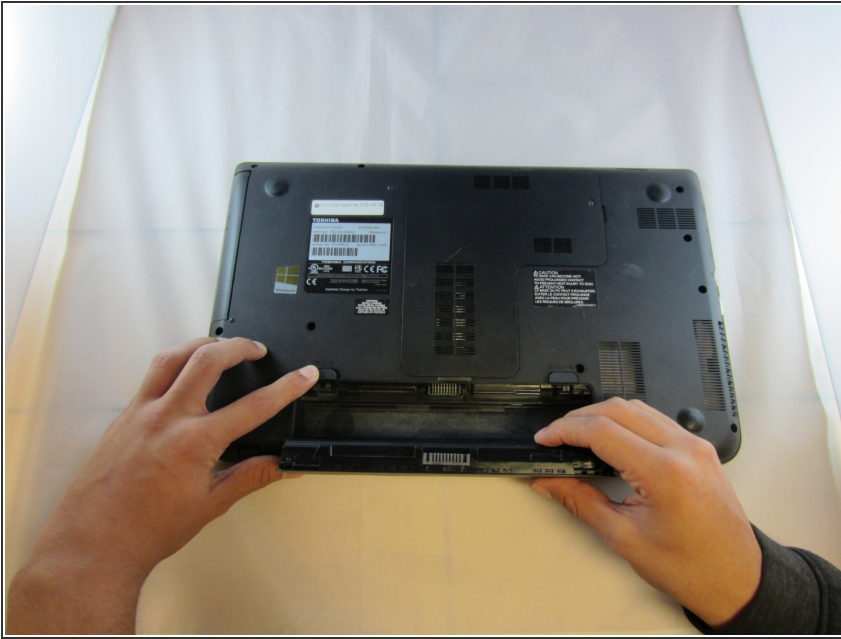
- Make sure the device is unplugged, completely off, and not warm to the touch.
- Check for any visible battery defects such as bulges, bends or cracking as they could be signs of a leaking or deformed battery.
- ⚠ Do not handle a deformed battery. Deformed batteries can cause burns and exposure to harmful chemicals.
- Flip device over and locate two switches on the back of the device.

Step 2



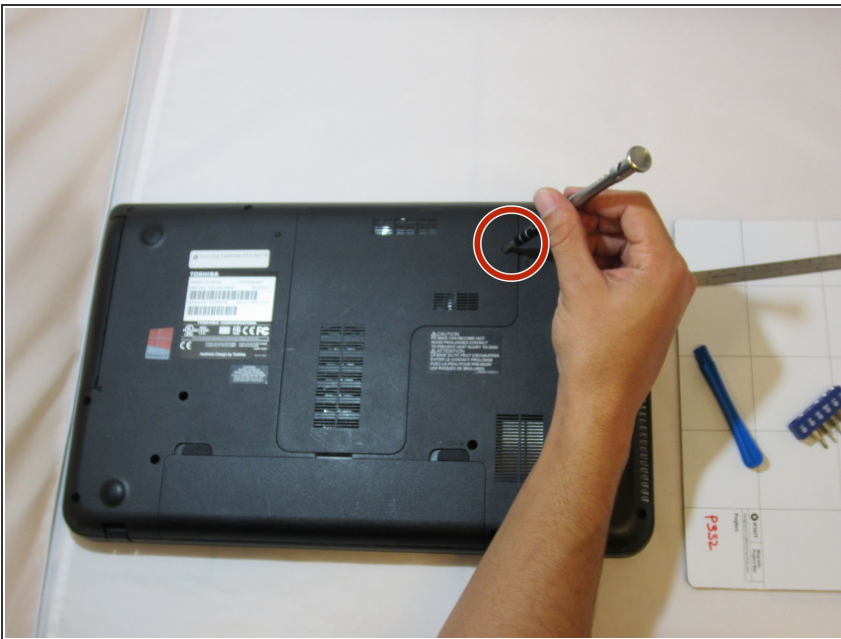
- Slide switch 1 towards the unlock symbol on the device (switch should click into place).
 - Slide switch 2 towards the unlocked symbol on the device.
 - While holding switch 2 in the unlocked position, use the notch located at the top of the battery to pull battery out and away from the device.
- i** Switch 2 does not lock into place and will need to be held in unlocked position.

Step 3



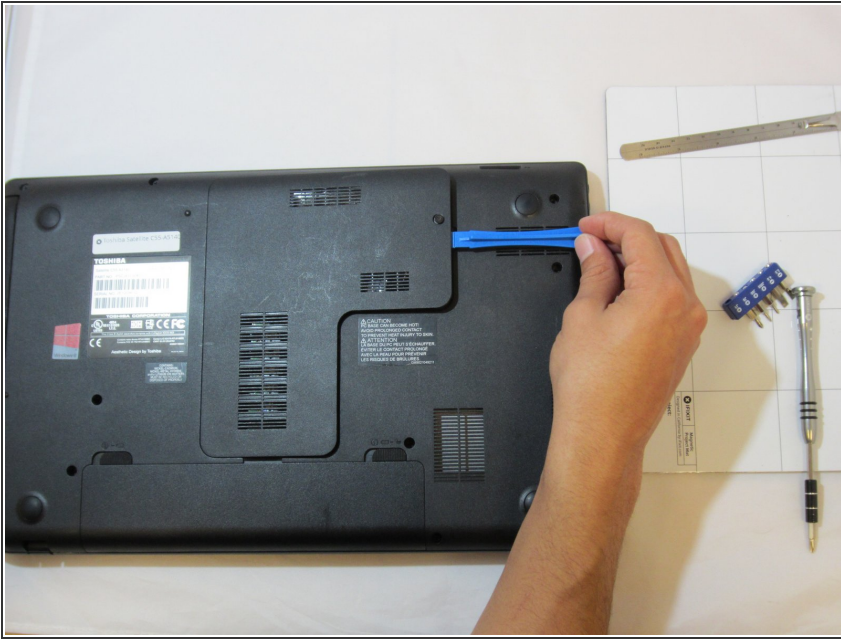
- Pull battery free from device and release switch 2.

Step 4 — CD Drive



- Make sure that the device is unplugged, completely off, and that the device is not warm to the touch.
- Flip the device over so you see the bottom, and loosen the 5mm PH#1 screw on the L shaped access panel.
- ⓘ The screw will not come out of access panel, simply unscrew until loose.

Step 5



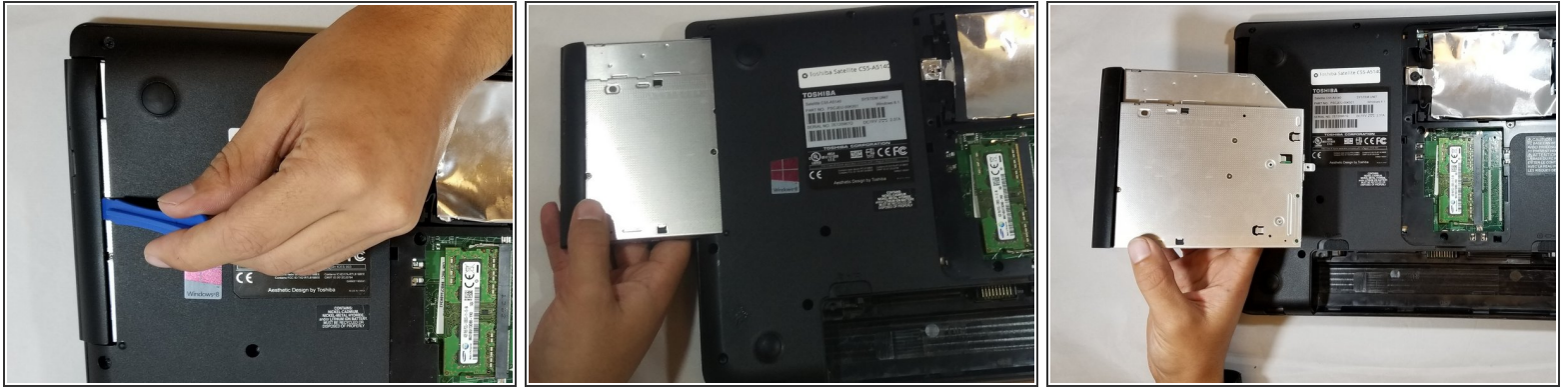
- Use the plastic opening tool to open access panel by sliding it into notch near screw and prying access panel(L-shaped) away from device.
- Pull panel completely free from device and set aside.

Step 6



- Unscrew the 2mm PH#1 screw next to the Toshiba Device information tag.

Step 7



- Using the plastic opening tool, pry the CD drive up.
- Once the CD drive is partially separated from the device, grasp with your hand and slide it out of the slot.

To reassemble your device, follow these instructions in reverse order.