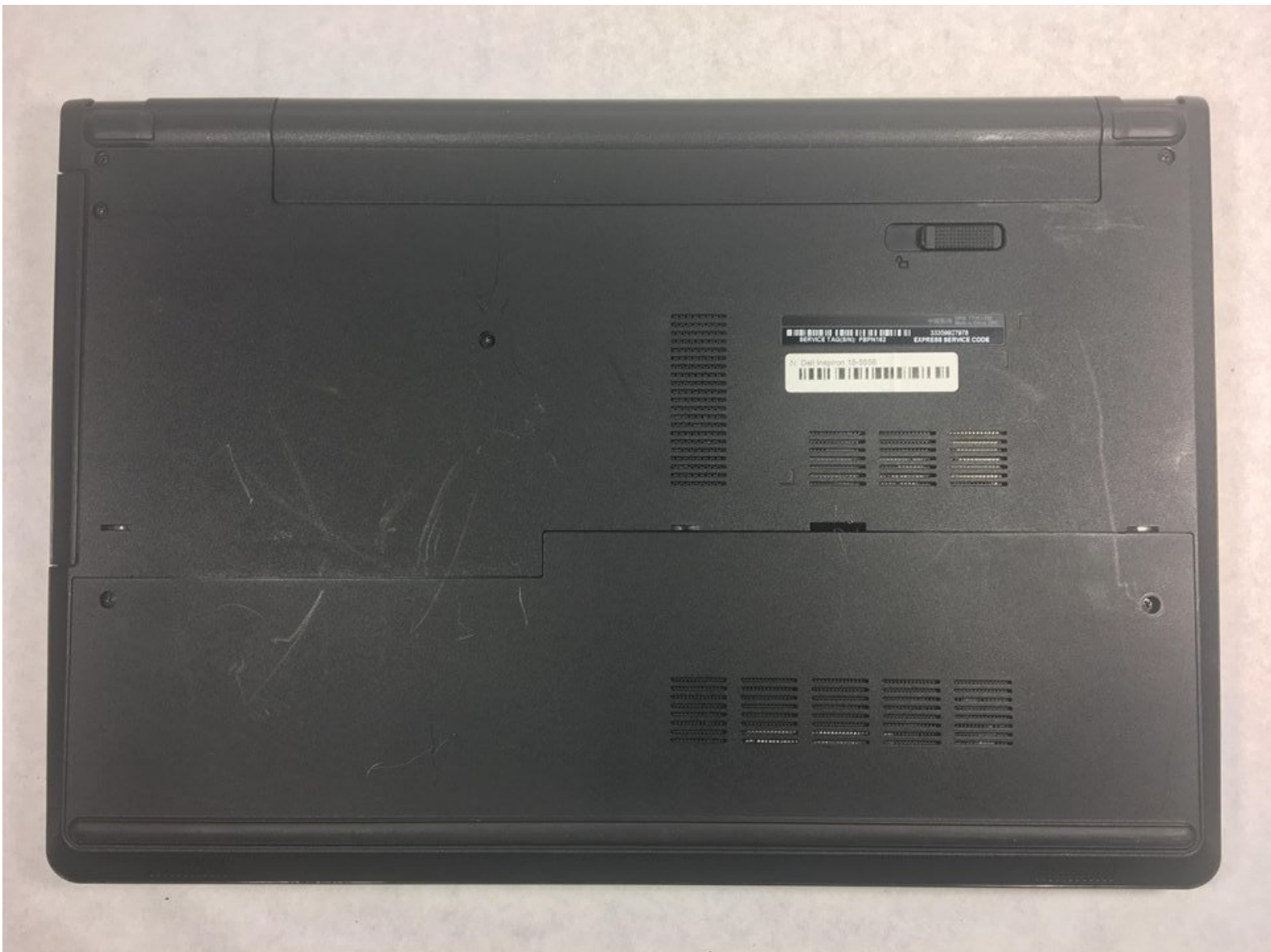




Dell Inspiron 15-5558 Battery Replacement

In this guide, you will be shown how to properly remove the battery from this device and replace it with a new one.

Written By: Adam Lourenco



INTRODUCTION

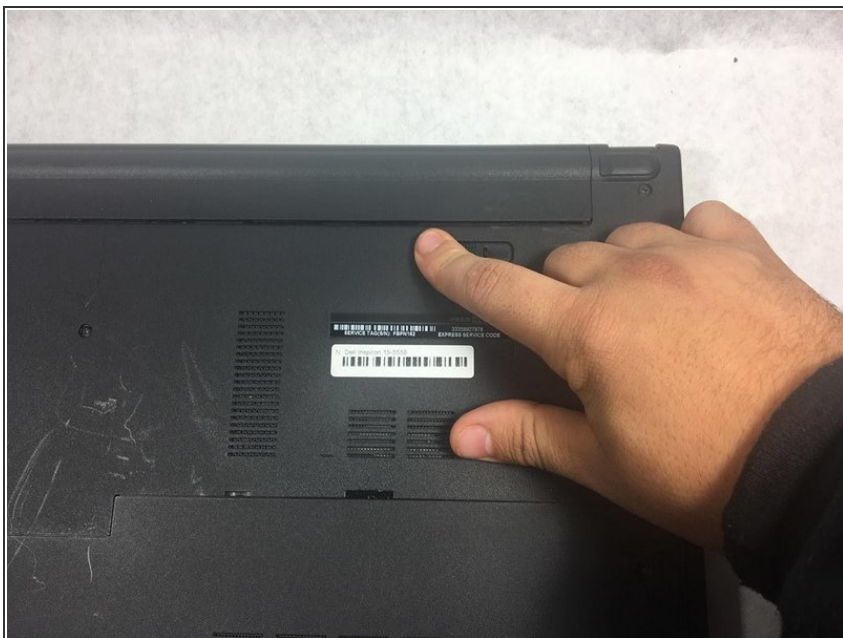
If your device is not turning on, the battery might be dead. The battery is the part of the laptop that provides energy or power to make the device work. This guide shows you how to replace an old or dead battery.

Step 1 — Battery



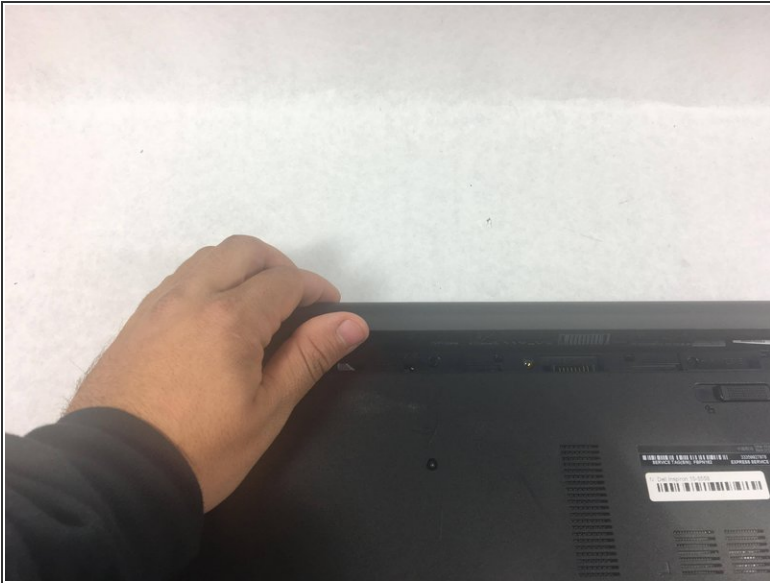
- ❗ Make sure you turn off the device before starting.
- Flip the device over and so the white bar code is on the right.

Step 2



- Slide the battery latch all the way to the left until you hear the click and see the battery prop up.

Step 3



- Rotate the battery up and remove it.

To reassemble your device, follow these instructions in reverse order.