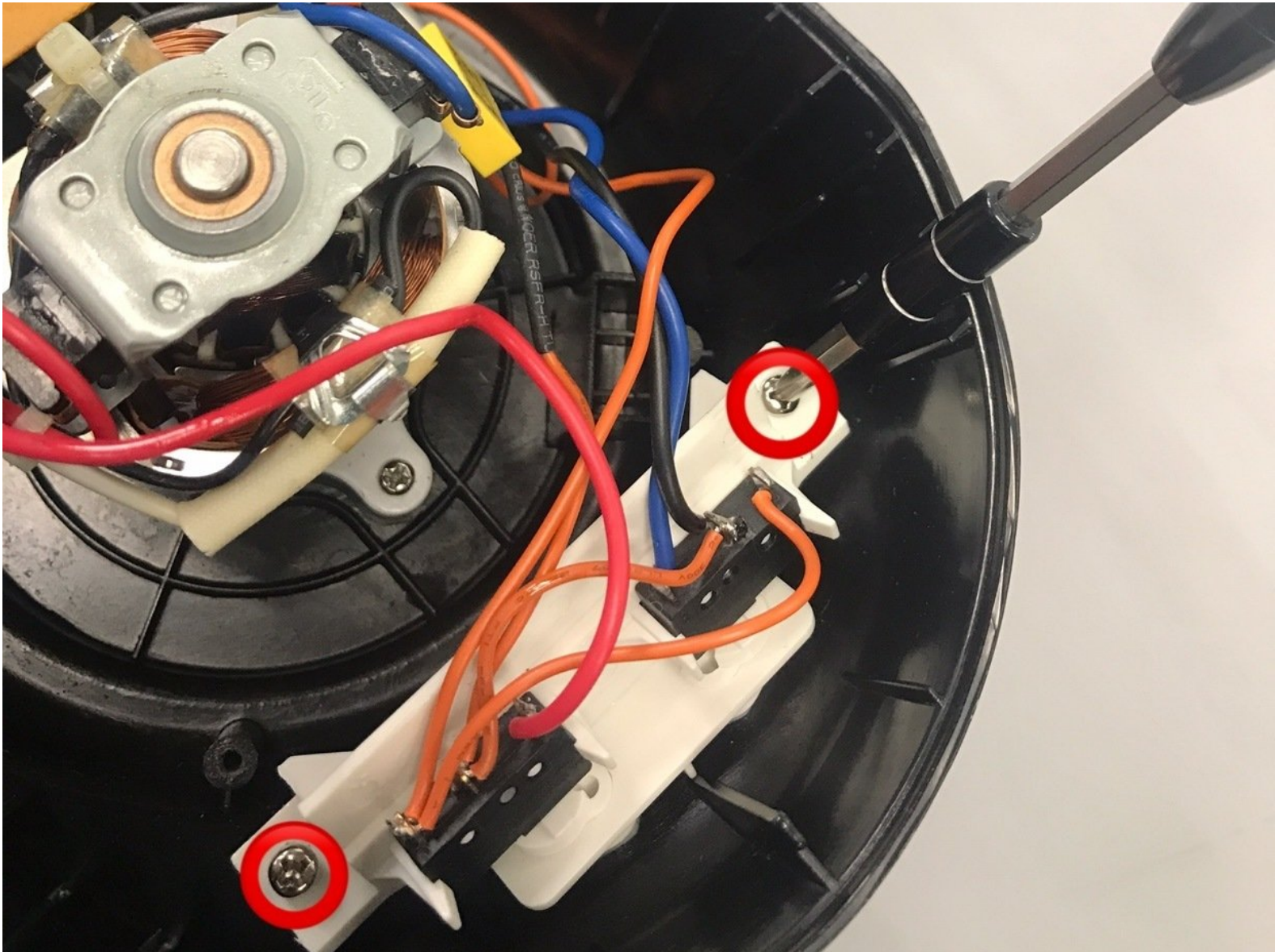




Cuisinart Mini-Prep DLC-2A Button Replacement

Complete how-to and replacement guides for the Cuisinart Mini-Prep DLC-2A button panel.

Written By: Xavier Tapia



INTRODUCTION

Use this guide to replace the "Chop" and "Grind" buttons located on the Cuisinart Mini-Prep DLC-2A.



TOOLS:

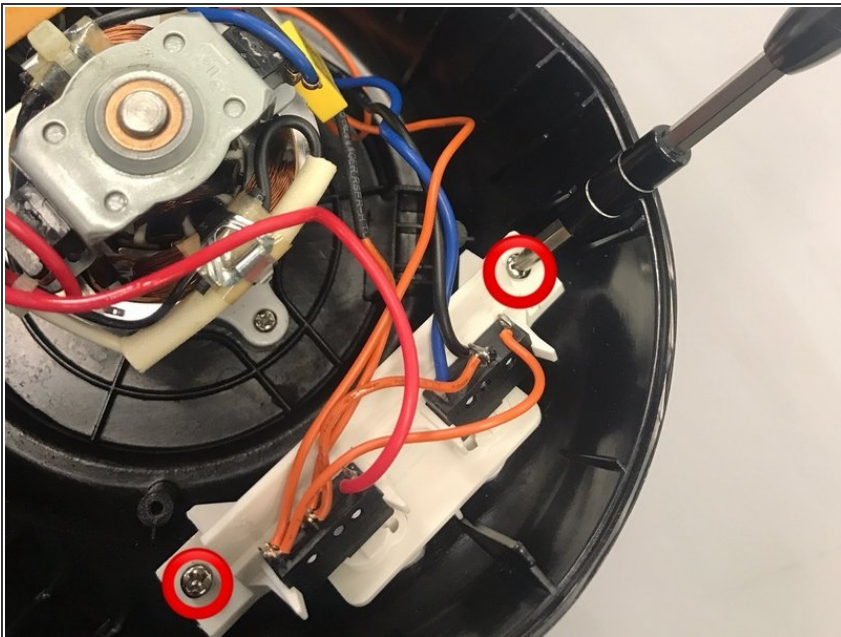
- [Phillips #1 Screwdriver](#) (1)
 - [Spudger](#) (1)
-

Step 1 — Cuisinart Mini-Prep DLC-2A Case Disassembly



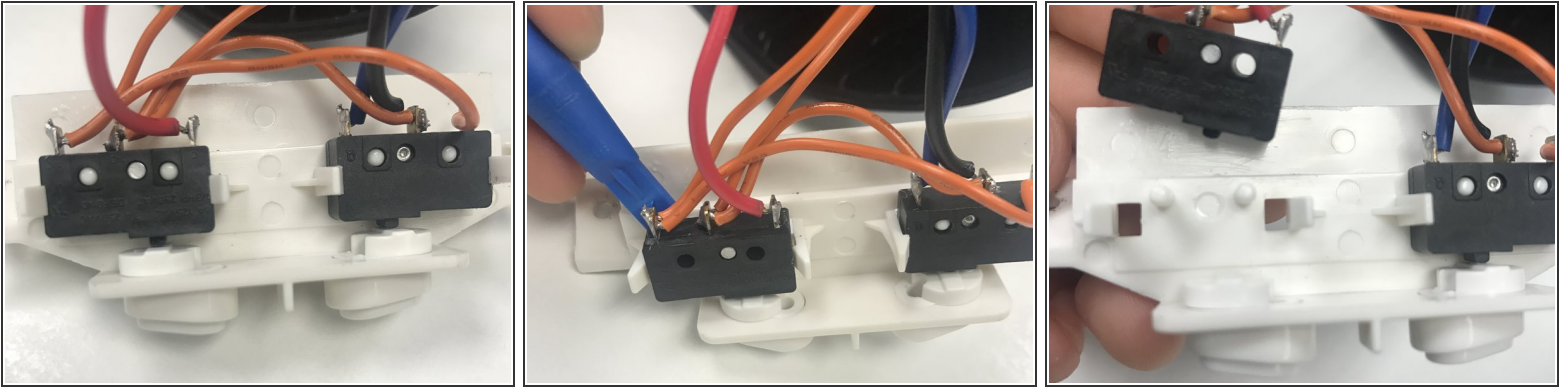
- Remove the back panel using a Phillips #1 Screwdriver on the four screws that hold it in place.

Step 2 — Button



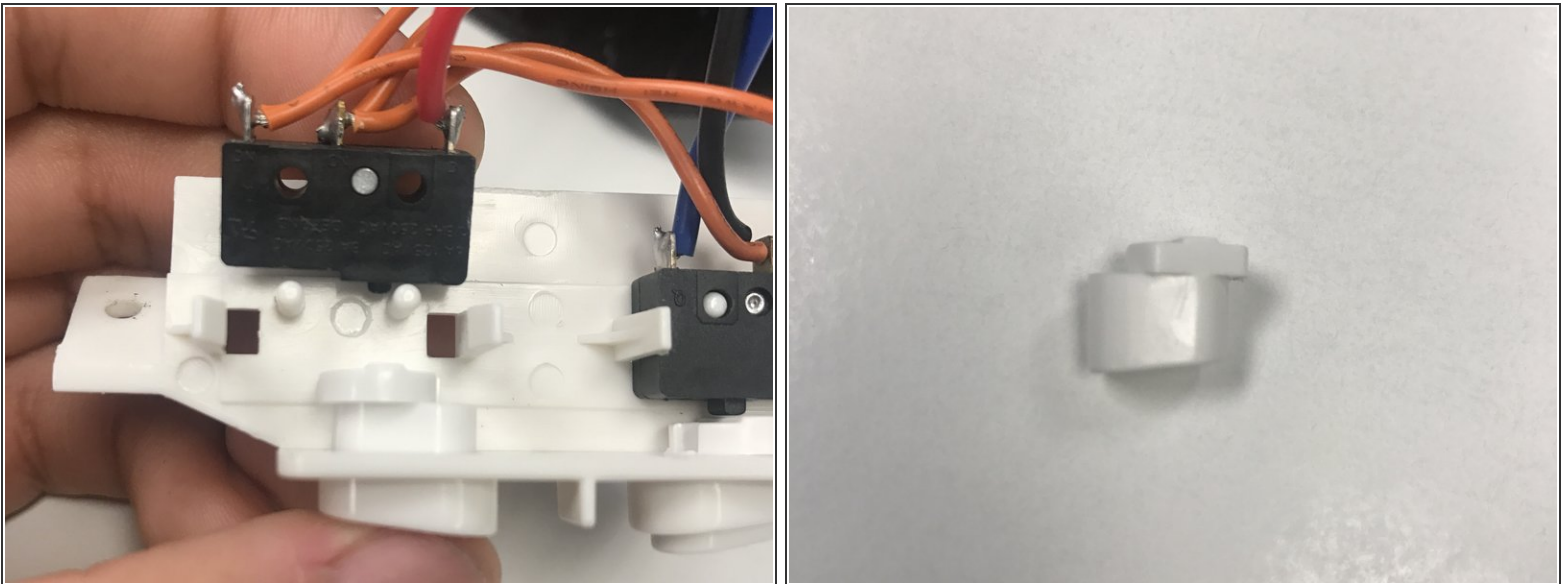
- Locate the Button Panel inside the blender.
- Using your Phillips #1 Screwdriver, remove the two screws which hold the panel in place.

Step 3



- Locate the black box held in place on the panel.
- Using your Spudger, wedge the black box out of its place to uncover the button

Step 4



- Once the black box is out of place, use your finger to push out the button.
- Now replace the old button with your newly acquired button.

To reassemble your device, follow these instructions in reverse order.