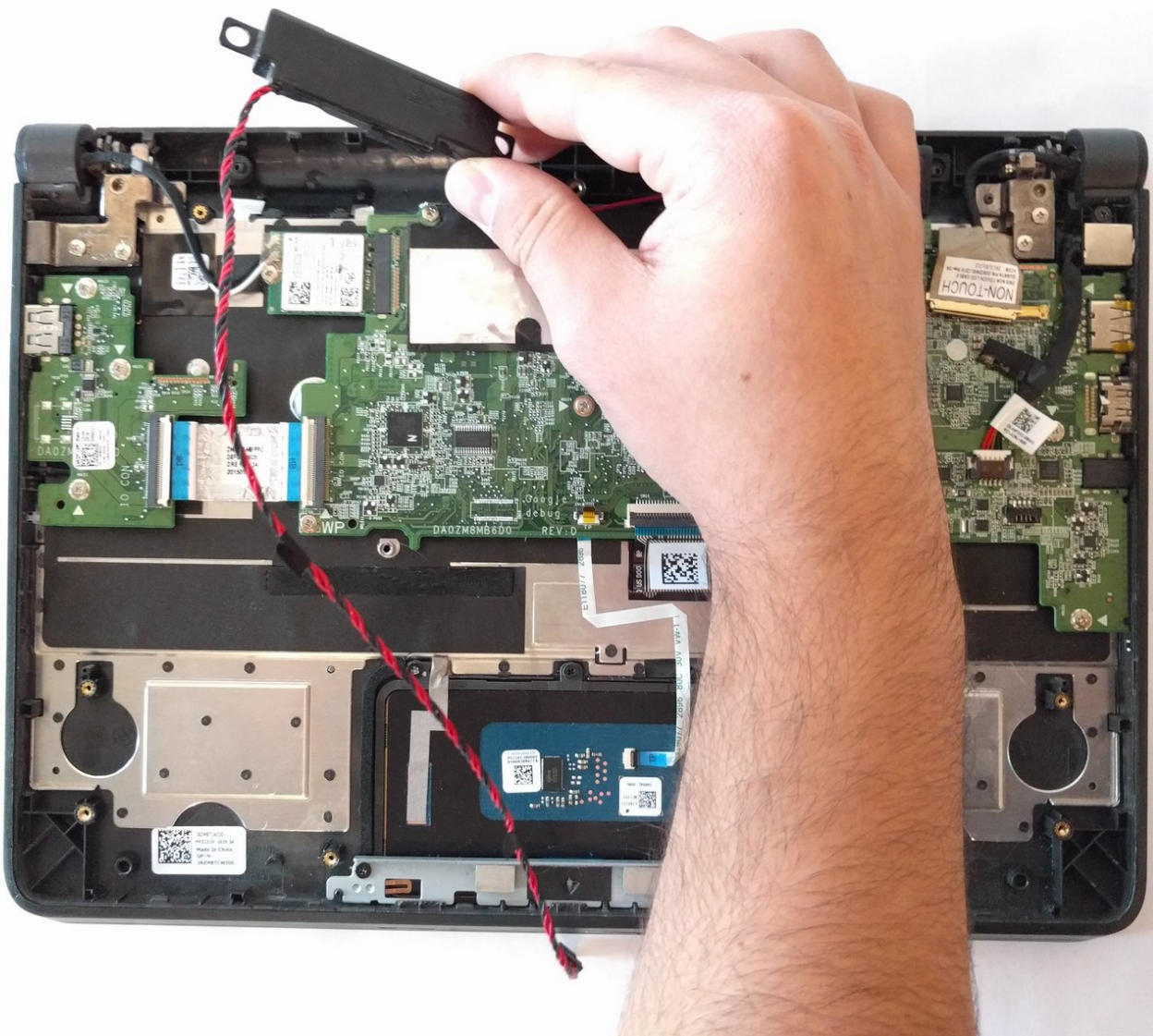




Dell Chromebook 11-3120 Speakers Replacement

This guide will show you how to properly remove and replace the left and right speakers of the Dell Chromebook 11-3120.

Written By: Joseph Silveira



INTRODUCTION

Sometimes speakers or speaker housings can break overtime due to normal wear and tear. In this guide we will show you how to properly remove and replace the speakers.



TOOLS:

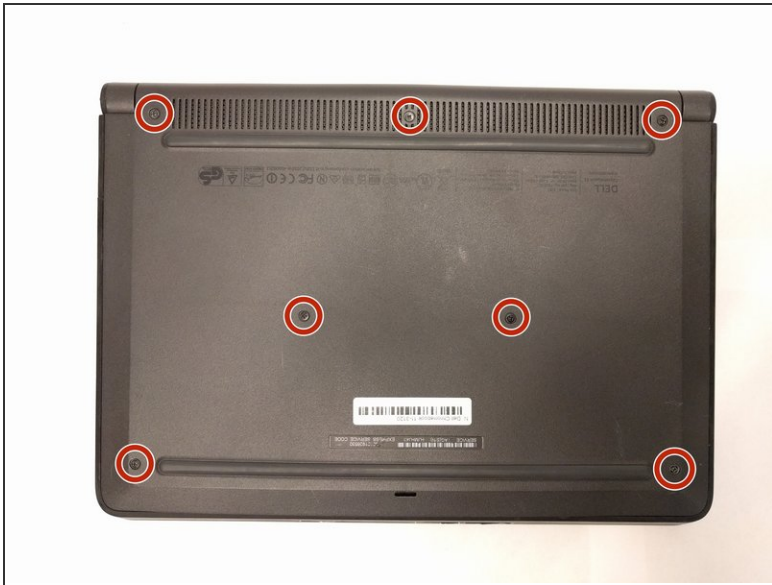
- [JIS #0 Screwdriver](#) (1)
- [Metal Spudger](#) (1)
- [iFixit Opening Tools](#) (1)



PARTS:

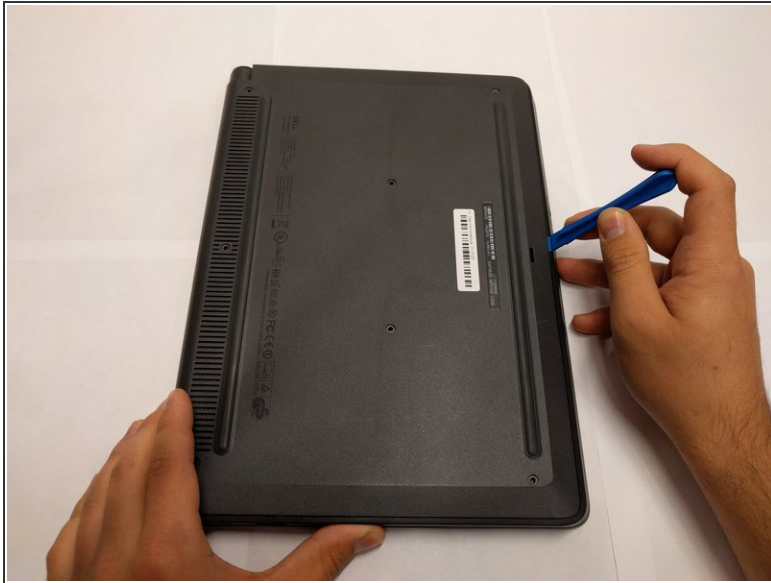
- [Dell Chromebook 11 3120 Speaker Set](#) (1)

Step 1 — Back Panel



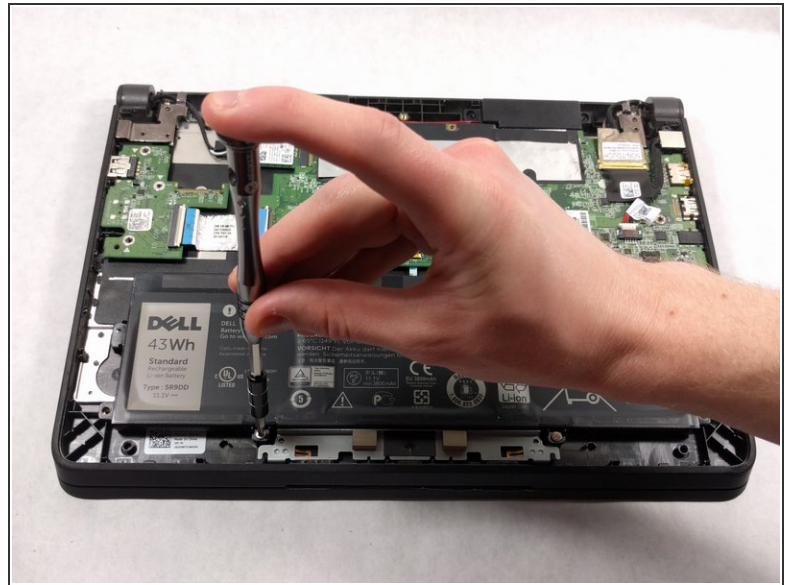
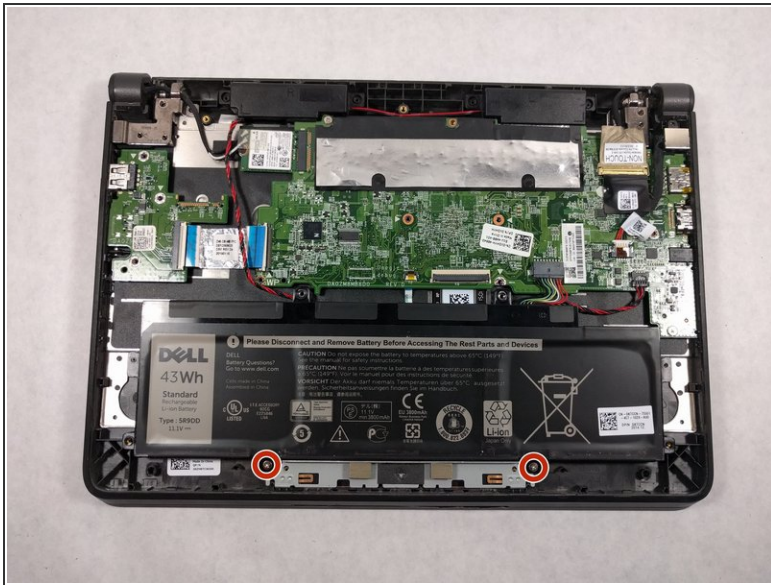
- Use the #J0 screwdriver to unscrew the seven 4mm screws located around the back panel.

Step 2



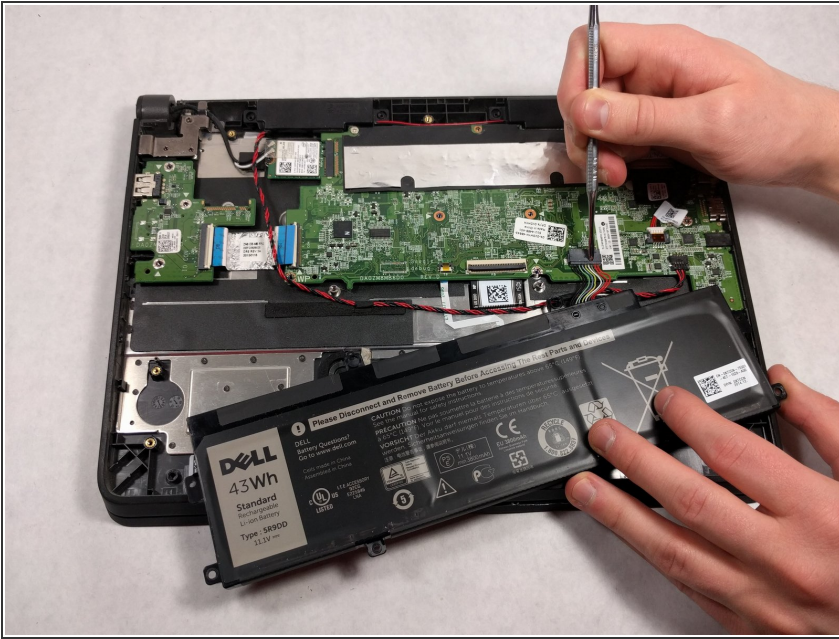
- Use the plastic opening tool to gently pry around the four sides of the back panel until the panel is fully released.
- ⓘ Taking the back cover off of the computer may require more force than expected. When using the opening tool, be careful not to use too much force on it, and make sure all the screws are removed.

Step 3 — Battery



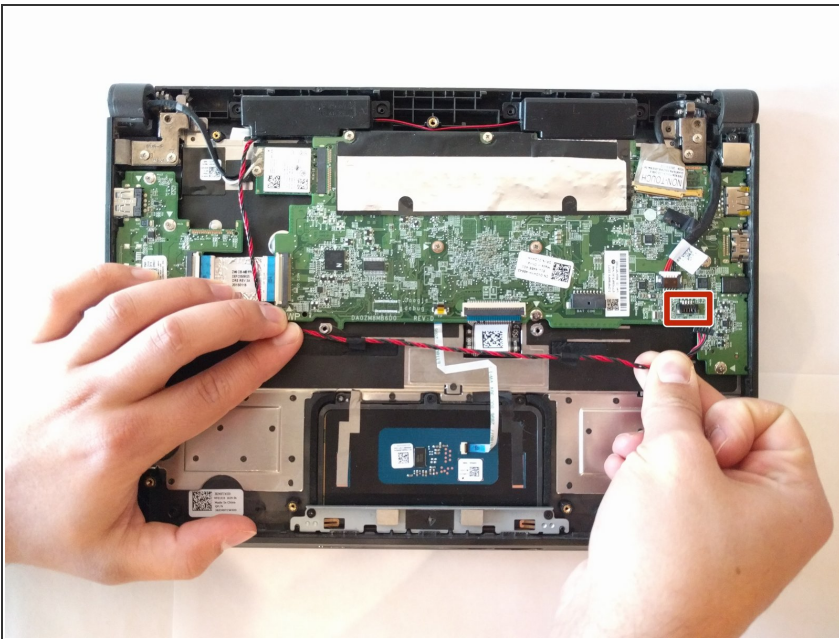
- Using a JIS #0 screwdriver, unscrew the two 4mm screws securing the battery in place.

Step 4



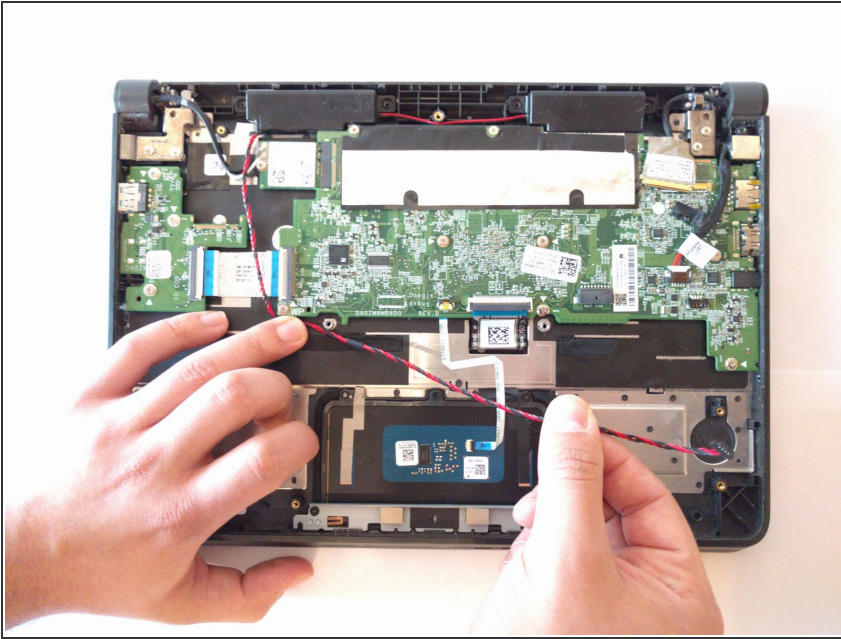
- Using the pointed end of a #2 spudger, remove the connection between the battery and motherboard by slightly pulling on the wires while pushing the tiny hole down using the spudger.
- Pull out the battery from inside the laptop.

Step 5 — Speakers



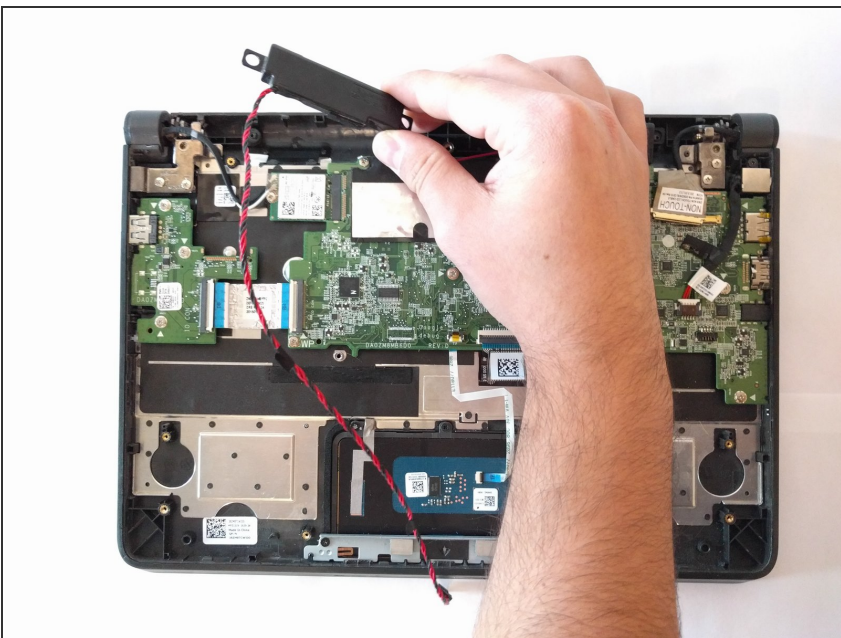
- Gently remove the 4-pin connector that connects the speakers to the motherboard.

Step 6



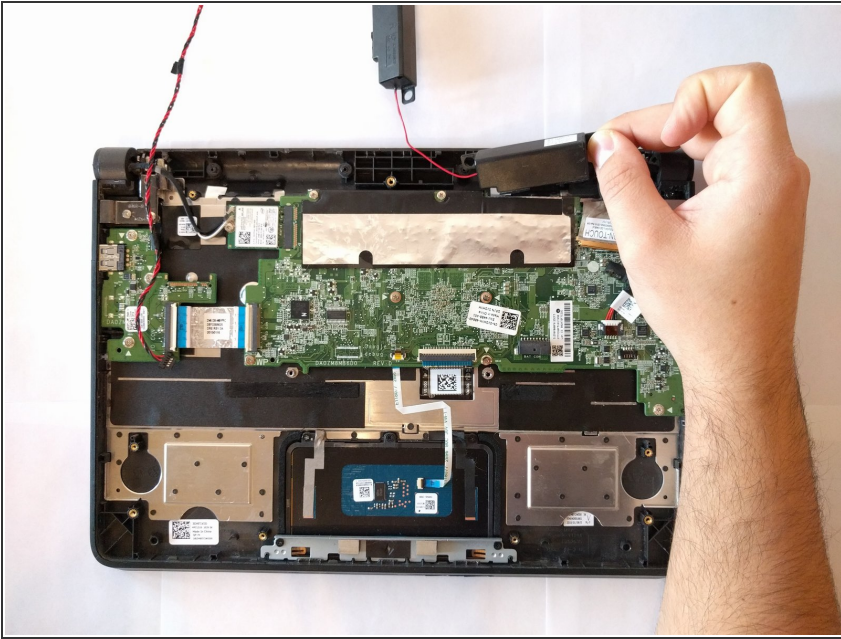
- Remove the tape securing it to the plastic casing of the device.

Step 7



- Carefully lift out the right speaker housing, which is held in place by circular rubber guides, located on both sides of the housing.

Step 8



- Moving down the cable, remove the left speaker housing, which is held in place by circular rubber guides, located on both sides of the housing.

To reassemble your device, follow these instructions in reverse order.