



Dell XPS 14 L401X Keyboard Replacement

This guide will show you how to replace the keyboard on a Dell XPS 14 L401X.

Written By: Nicole Johnson



INTRODUCTION

If your keyboard stops functioning properly, you may want to replace the keyboard of your device.



TOOLS:

- [JIS #1](#) (1)
 - [Spudger](#) (1)
-

Step 1 — Battery

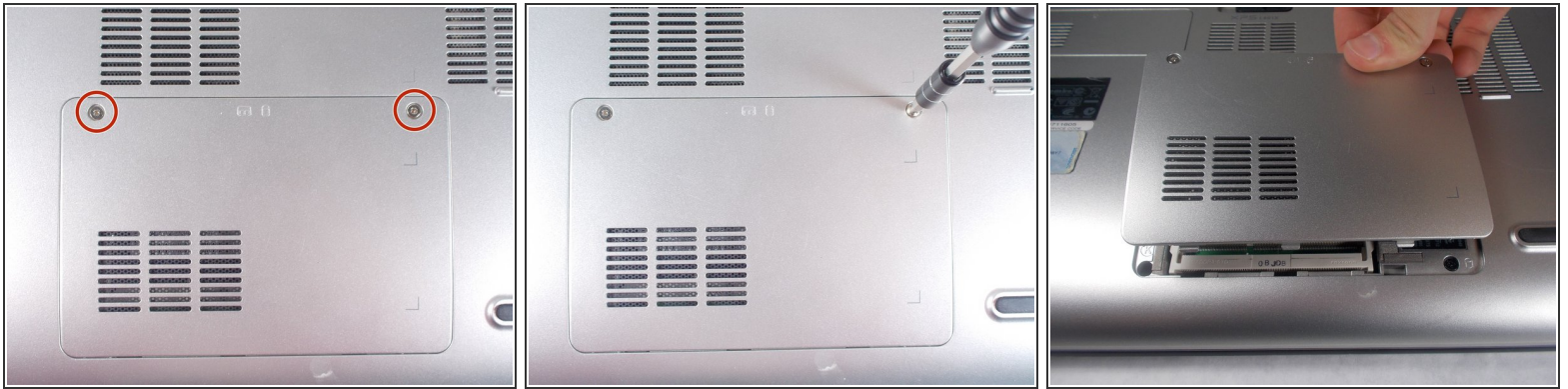


! Make sure that the laptop is shut off before attempting to remove any components from the device.

i The laptop in this example did not have a battery equipped.

- Locate the spring latch on the bottom of the device that will unlatch the battery.
- Hold the spring latch in the open position and pull the battery out of its recess.

Step 2 — RAM



- Use a JIS 1 screwdriver to loosen the (2) captive screws from the panel.
- ⓘ The captive screws will not come off of the panel.
- Pull the panel upwards and towards the battery to remove.
- Put the panel to the side, exposing the RAM.

Step 3



- The RAM is held by two spring clips. Pull at the two spring clips and the RAM will move upwards.

i Keep your fingers on the edge of the chip.

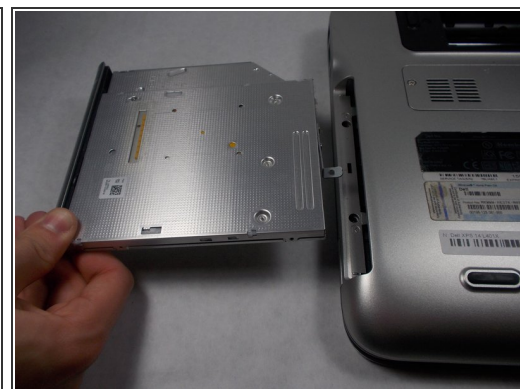
! Only handle the RAM by the sides! Do not touch the circuits or the terminals to avoid contamination!

Step 4 — Optical Drive



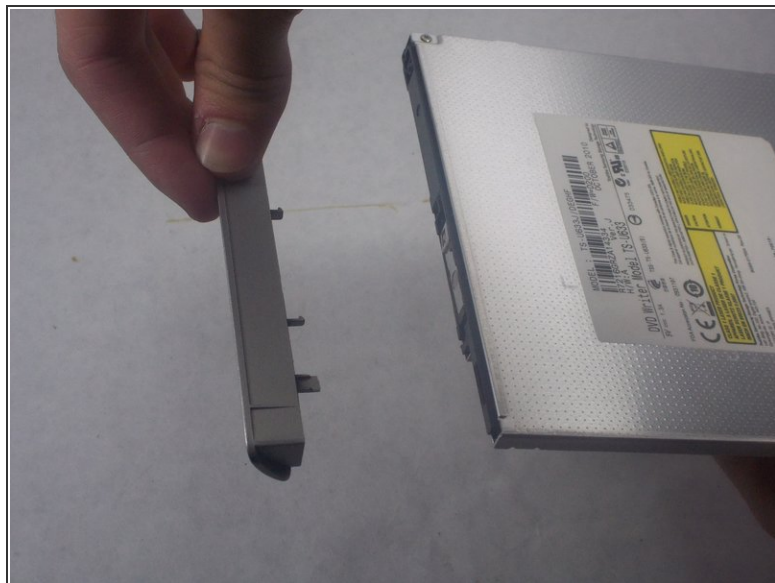
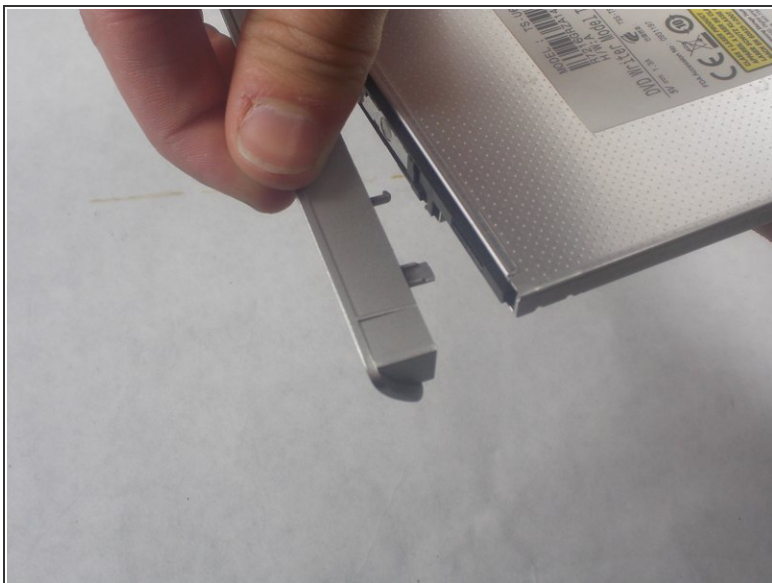
- Locate and remove (1) 8.5mm JIS 1 screw at the top left corner of the RAM bay.

Step 5



- Carefully pull out the optical drive from its bay.

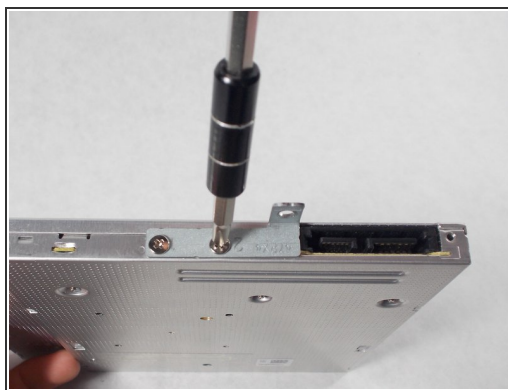
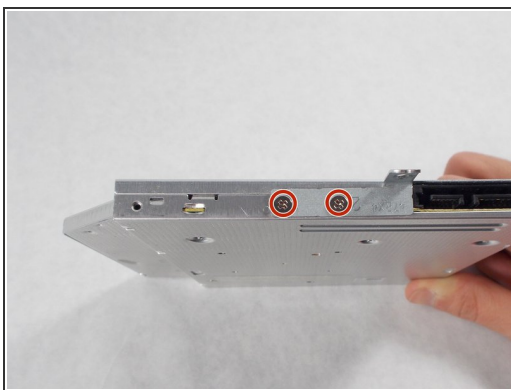
Step 6



- Carefully pull off the decorative cover from the front of the optical drive.

i This decorative cover will be transferred to the new optical drive.

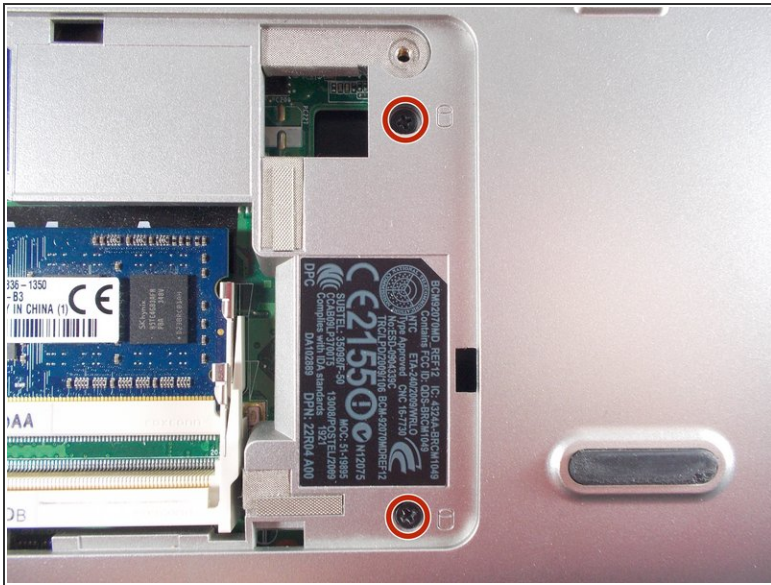
Step 7



- Use a JIS 1 screwdriver to remove (2) 2mm screws on the drive's anchoring bracket.

i This bracket will be transferred to the new optical drive.

Step 8 — Hard Drive



- Use a JIS 1 screwdriver to remove (2) 2.5mm screws located on the right side of the RAM bay.

Step 9



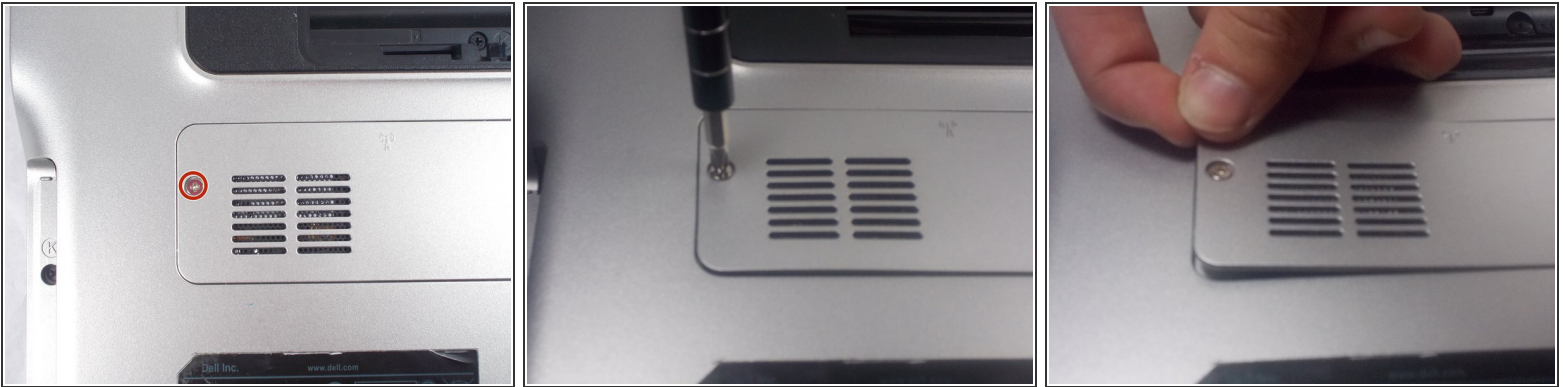
- Push the hard drive to the right with a spudger to unseat it from its socket while pulling out the hard drive with your other hand.

Step 10



- Use a JIS 1 screwdriver to remove (1) 2.5mm screw attaching the plastic cosmetic cover to the hard drive.
- Detach the plastic cosmetic cover from the hard drive.
- ⓘ This cosmetic cover will be transferred to the new hard drive.

Step 11 — Mini Card



- Locate the mini card access panel marked with a radio tower emblem on the bottom of the laptop near the battery bay.
- Use a JIS 1 screwdriver to loosen the captive screw securing the panel to the device.
- ⓘ The captive screw will not come off of the panel.
- Carefully remove the panel by prying it upwards, unlocking it from the tabs that are securing it in place.

Step 12



- Disconnect the two wires on the mini card by carefully plucking them upwards by the metal contact points at the terminals.
- ⚠ Do not pluck the contacts off of the terminals by pulling on the wires, this can damage the cables.
- Remove (1) 2mm screw from the bottom left corner of the mini card with a JIS 1 screwdriver.

Step 13



- Remove the mini card as it flips upward.

Step 14 — Palm Rest



- Remove two 4.5mm screws with JIS 1 screwdriver marked by the letter "K" in the optical drive bay.

Step 15



- Remove (2) 4.5mm screws with JIS 1 screwdriver marked by the letter "K" in the hard drive bay.

Step 16



- Remove (2) 4.5mm screws with JIS 1 screwdriver marked by the letter "K" near Battery

Step 17



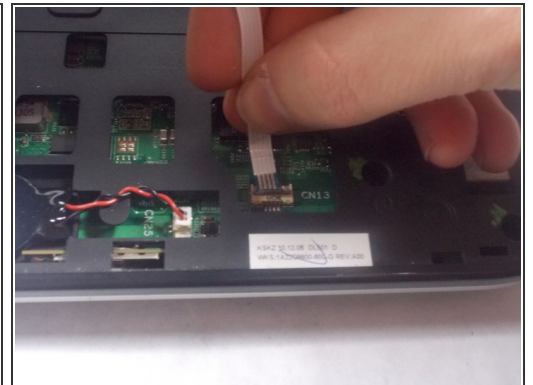
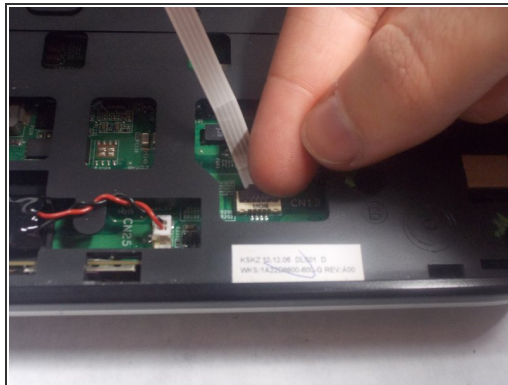
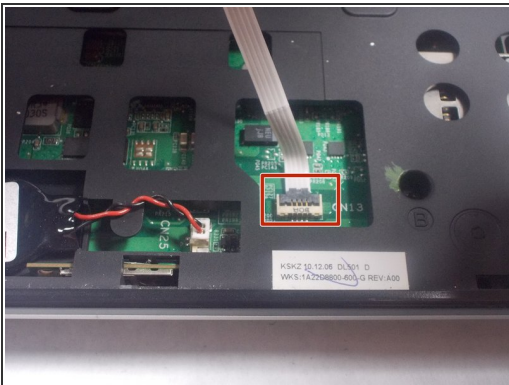
- Remove (1) 7.5mm screw with JIS 1 screwdriver marked by the letter "K" in the RAM bay.

Step 18



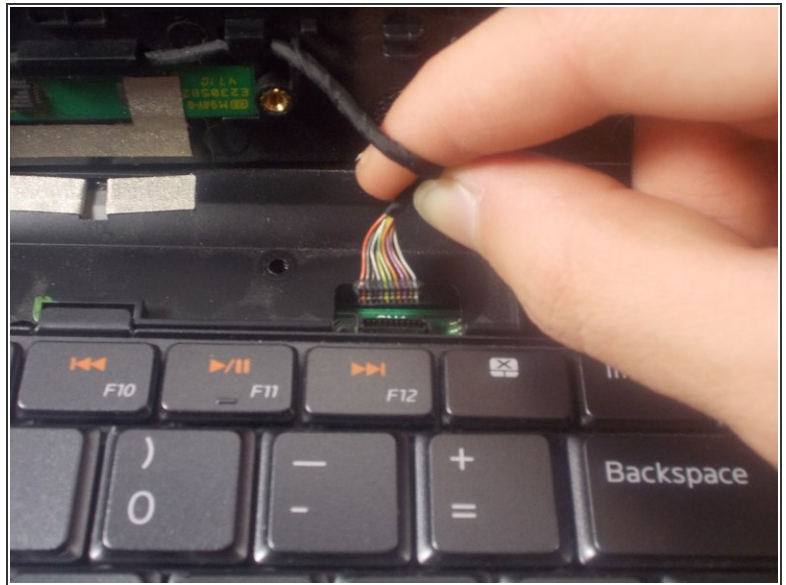
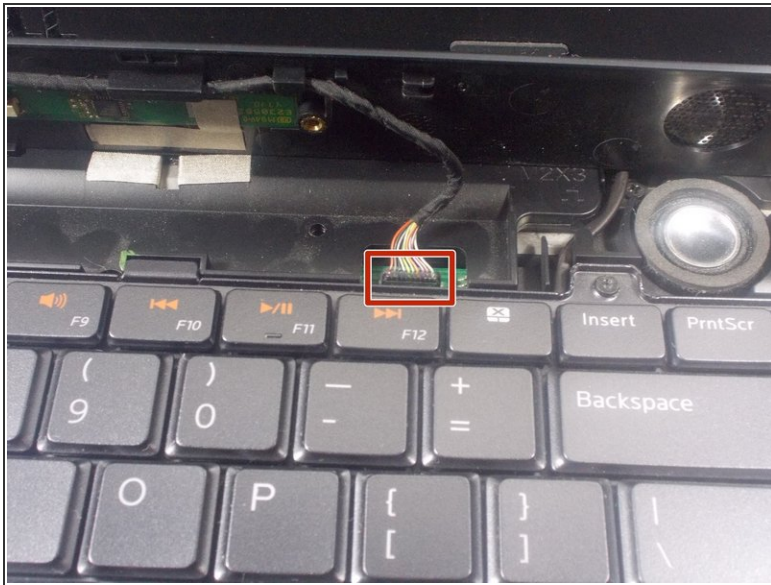
- Open the display to provide room for the palm rest to come out.
- In the hard drive bay, push the "push" pad to lift up the palm rest.

Step 19



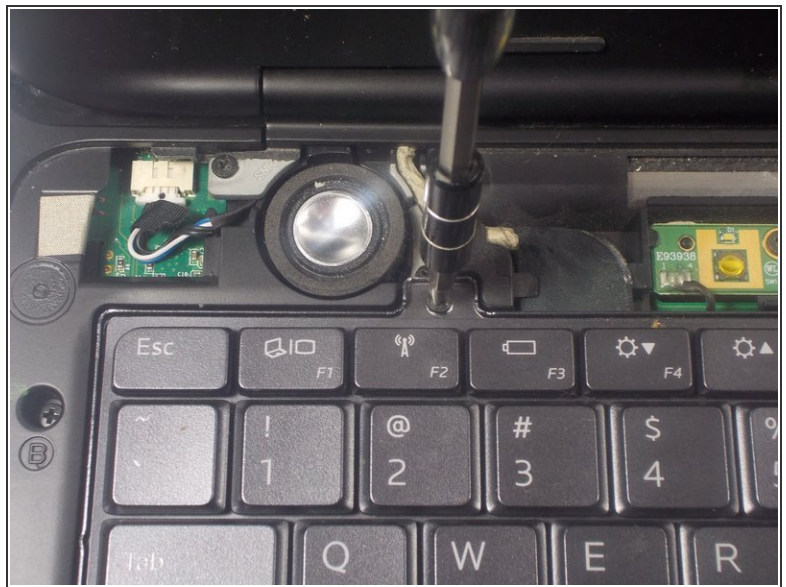
- Disconnect the track pad cable by flipping up the gray clamp and lifting the cable up.

Step 20



- Disconnect the status bar cable by pulling the pin connector upward.
- Finish lifting up the palm rest.

Step 21 — Keyboard



- Use a JIS 1 screwdriver to remove (2) 2.5mm screws located near the top of the keyboard.

Step 22



- Disconnect the keyboard's ribbon cable marked "A" by pushing out the two black tabs towards the ribbon cable.
- Remove the cable from its connection terminal by sliding it out. Finish lifting up the keyboard and set it to the side.

To reassemble your device, follow these instructions in reverse order.