



Dell XPS 14 L401X Display Assembly Replacement

This guide will show how to replace the LCD display assembly on a Dell XPS 14 L401X.

Written By: Mark



INTRODUCTION

If your screen is cracked or not functioning properly, you may want to replace the display assembly on your device.




TOOLS:

- [JIS #1](#) (1)
 - [Spudger](#) (1)
-

Step 1 — Battery

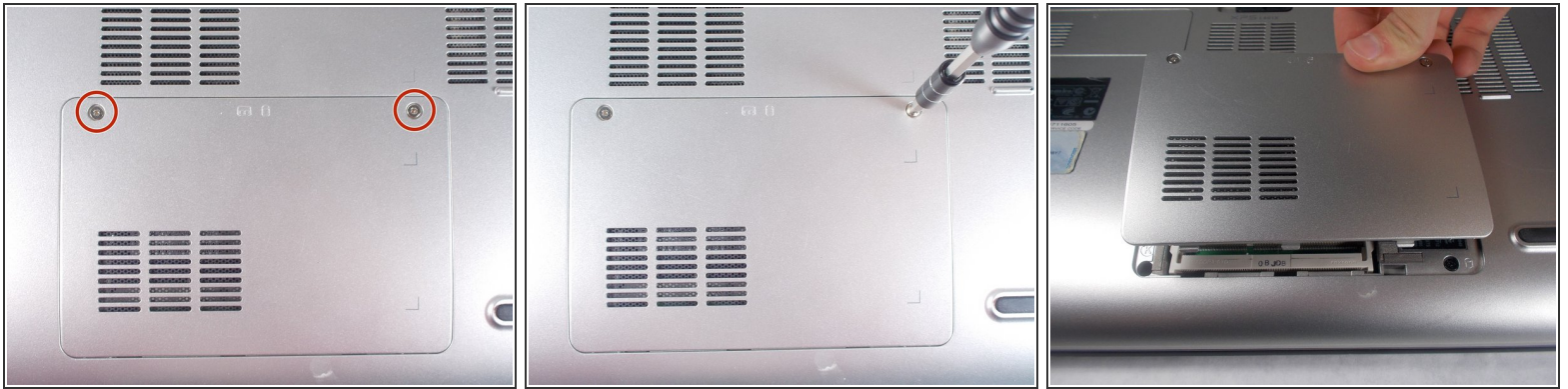


 Make sure that the laptop is shut off before attempting to remove any components from the device.

 The laptop in this example did not have a battery equipped.

- Locate the spring latch on the bottom of the device that will unlatch the battery.
- Hold the spring latch in the open position and pull the battery out of its recess.

Step 2 — RAM



- Use a JIS 1 screwdriver to loosen the (2) captive screws from the panel.

i The captive screws will not come off of the panel.

- Pull the panel upwards and towards the battery to remove.
- Put the panel to the side, exposing the RAM.

Step 3



- The RAM is held by two spring clips. Pull at the two spring clips and the RAM will move upwards.

- ⓘ Keep your fingers on the edge of the chip.

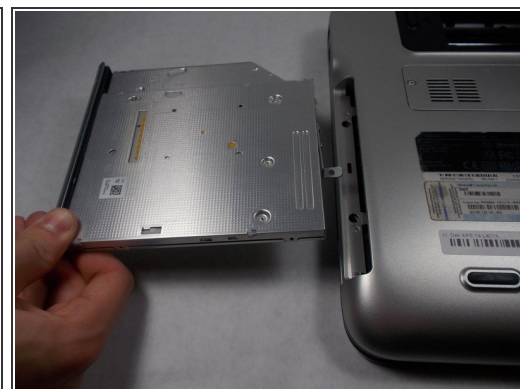
- ⚠ Only handle the RAM by the sides! Do not touch the circuits or the terminals to avoid contamination!

Step 4 — Optical Drive



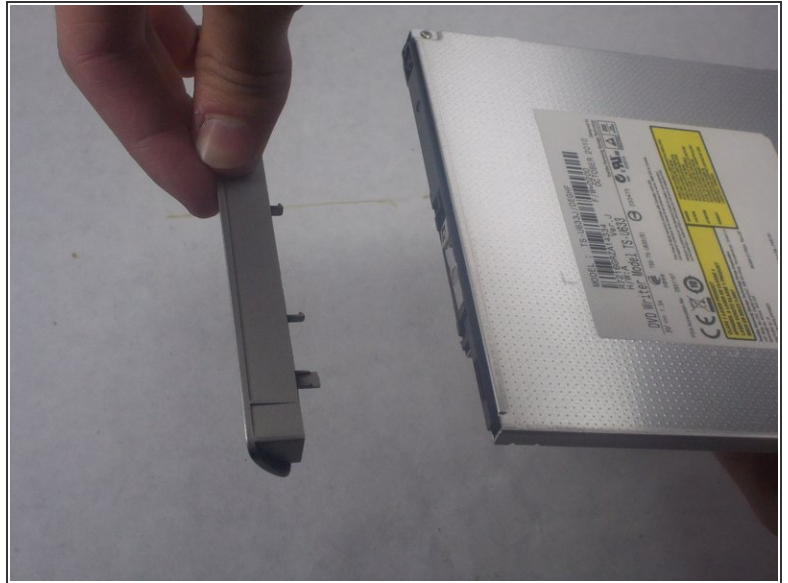
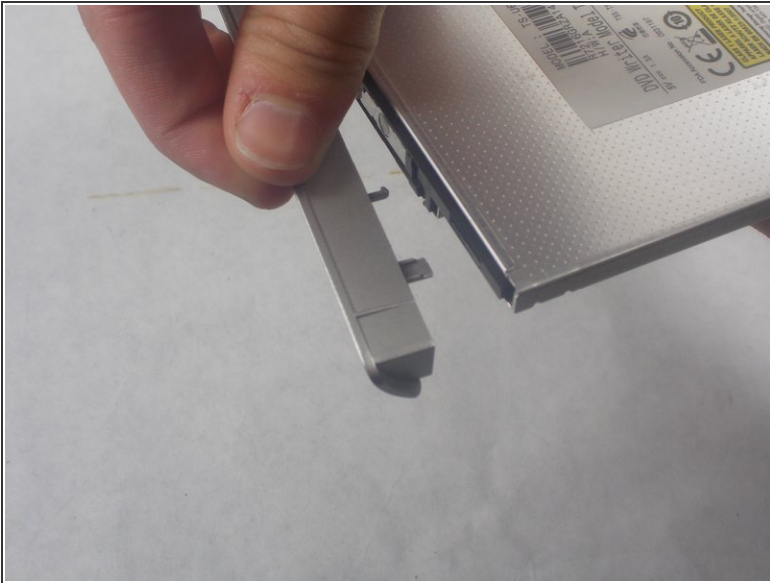
- Locate and remove (1) 8.5mm JIS 1 screw at the top left corner of the RAM bay.

Step 5



- Carefully pull out the optical drive from its bay.

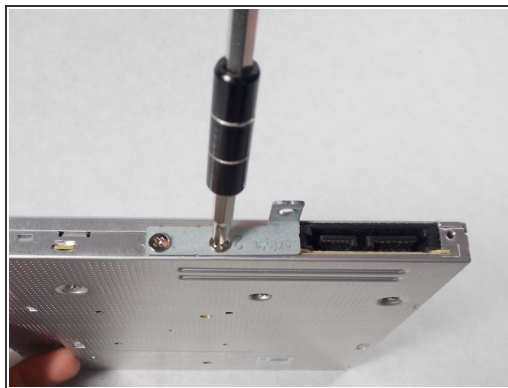
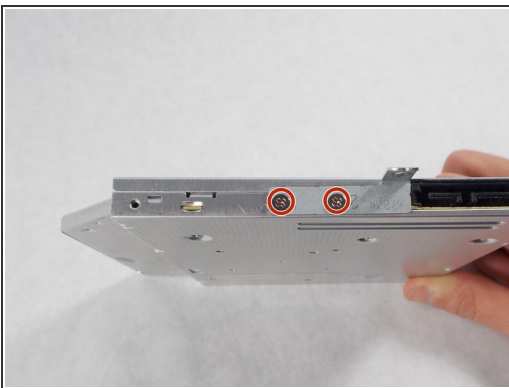
Step 6



- Carefully pull off the decorative cover from the front of the optical drive.

i This decorative cover will be transferred to the new optical drive.

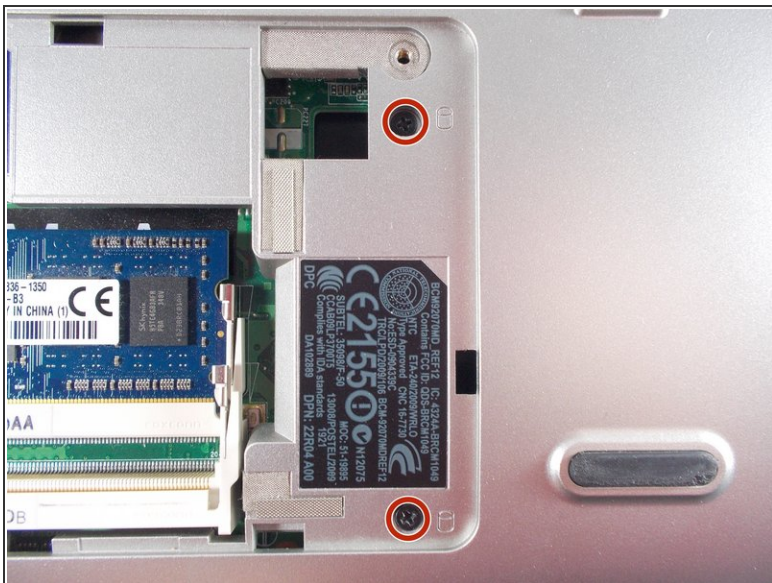
Step 7



- Use a JIS 1 screwdriver to remove (2) 2mm screws on the drive's anchoring bracket.

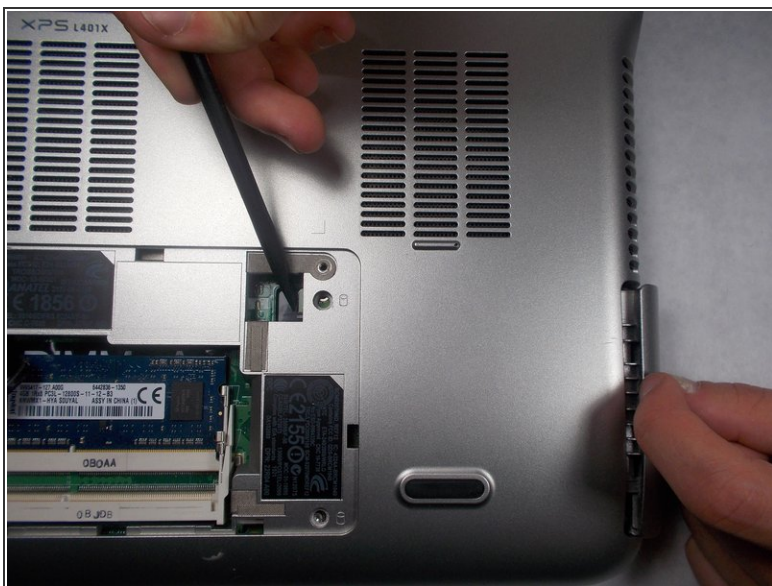
i This bracket will be transferred to the new optical drive.

Step 8 — Hard Drive



- Use a JIS 1 screwdriver to remove (2) 2.5mm screws located on the right side of the RAM bay.


Step 9



- Push the hard drive to the right with a spudger to unseat it from its socket while pulling out the hard drive with your other hand.


Step 10



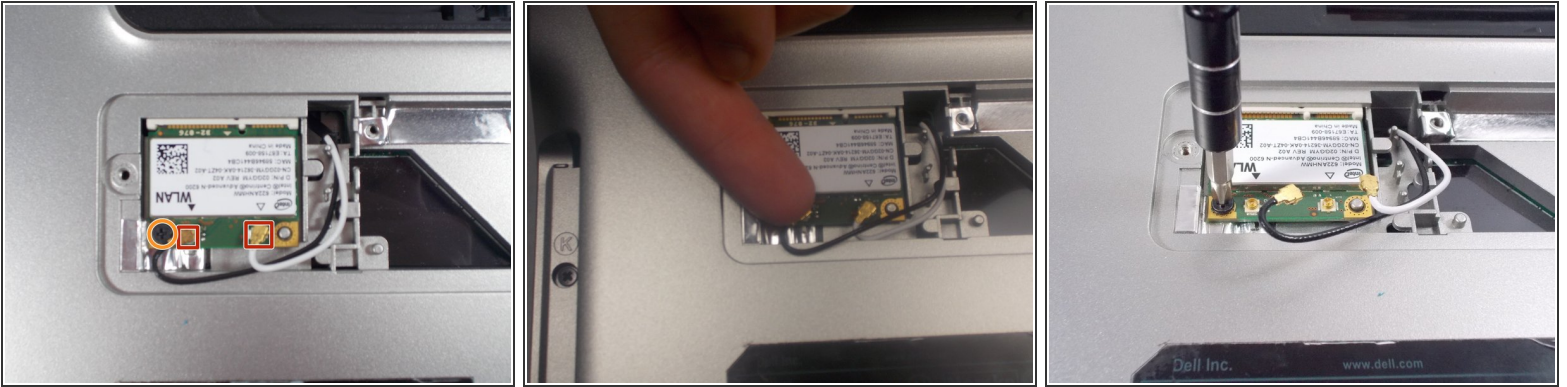
- Use a JIS 1 screwdriver to remove (1) 2.5mm screw attaching the plastic cosmetic cover to the hard drive.
- Detach the plastic cosmetic cover from the hard drive.
-  This cosmetic cover will be transferred to the new hard drive.

Step 11 — Mini Card



- Locate the mini card access panel marked with a radio tower emblem on the bottom of the laptop near the battery bay.
- Use a JIS 1 screwdriver to loosen the captive screw securing the panel to the device.
-  The captive screw will not come off of the panel.
- Carefully remove the panel by prying it upwards, unlocking it from the tabs that are securing it in place.

Step 12



- Disconnect the two wires on the mini card by carefully plucking them upwards by the metal contact points at the terminals.
- ⚠ Do not pluck the contacts off of the terminals by pulling on the wires, this can damage the cables.
- Remove (1) 2mm screw from the bottom left corner of the mini card with a JIS 1 screwdriver.

Step 13



- Remove the mini card as it flips upward.

Step 14 — Palm Rest



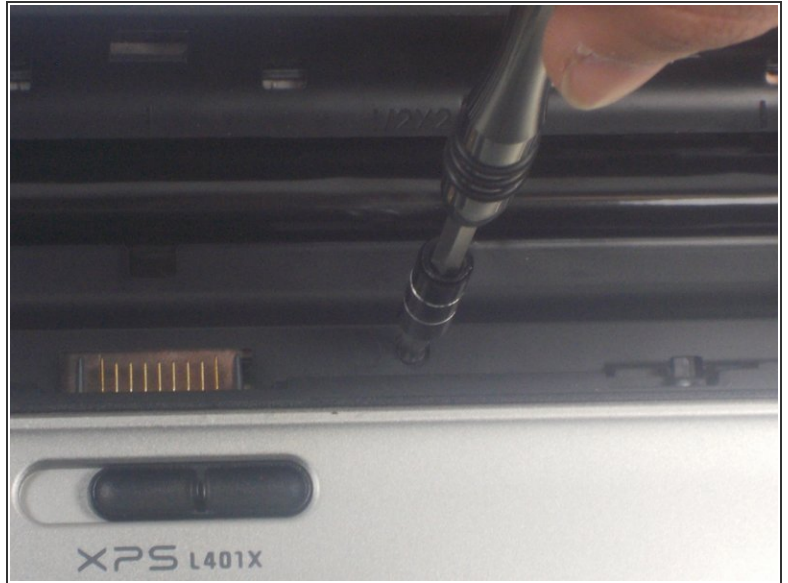
- Remove two 4.5mm screws with JIS 1 screwdriver marked by the letter "K" in the optical drive bay.

Step 15



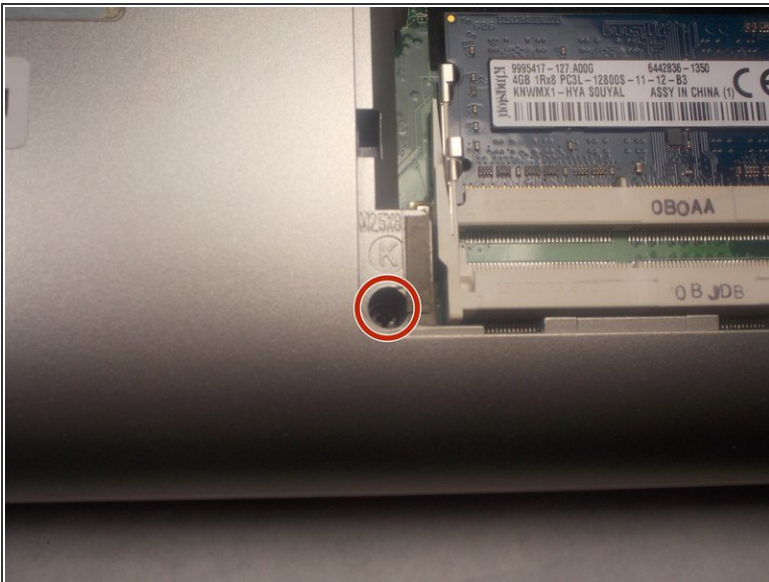
- Remove (2) 4.5mm screws with JIS 1 screwdriver marked by the letter "K" in the hard drive bay.

Step 16



- Remove (2) 4.5mm screws with JIS 1 screwdriver marked by the letter "K" near Battery

Step 17



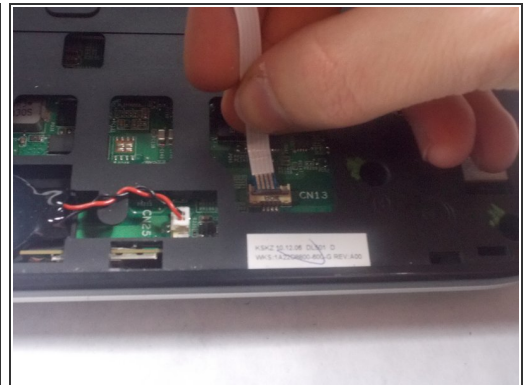
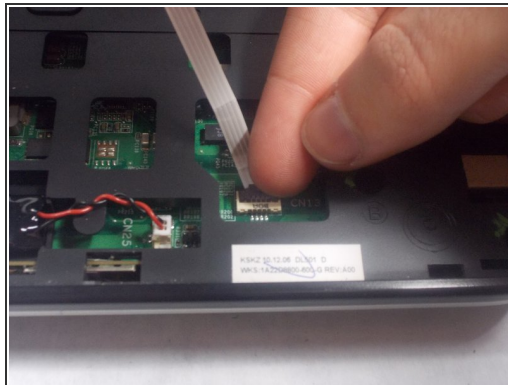
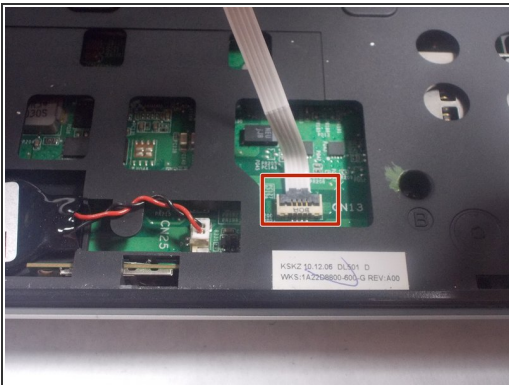
- Remove (1) 7.5mm screw with JIS 1 screwdriver marked by the letter "K" in the RAM bay.

Step 18



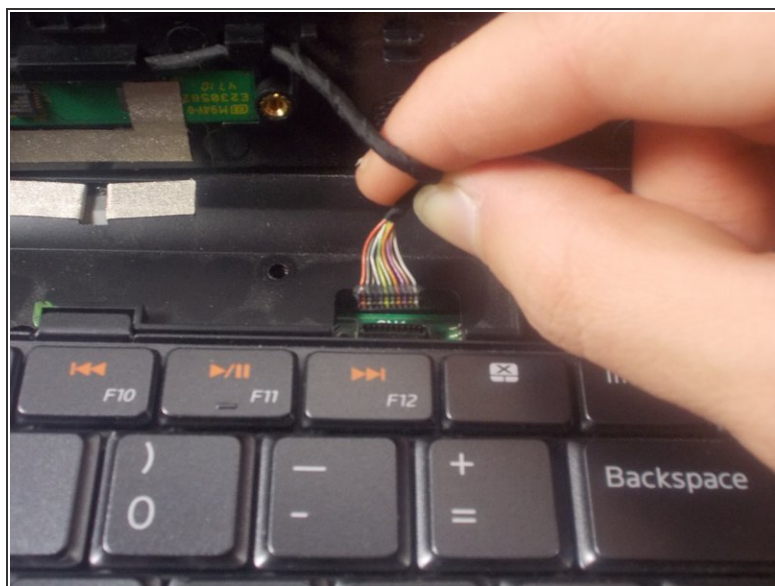
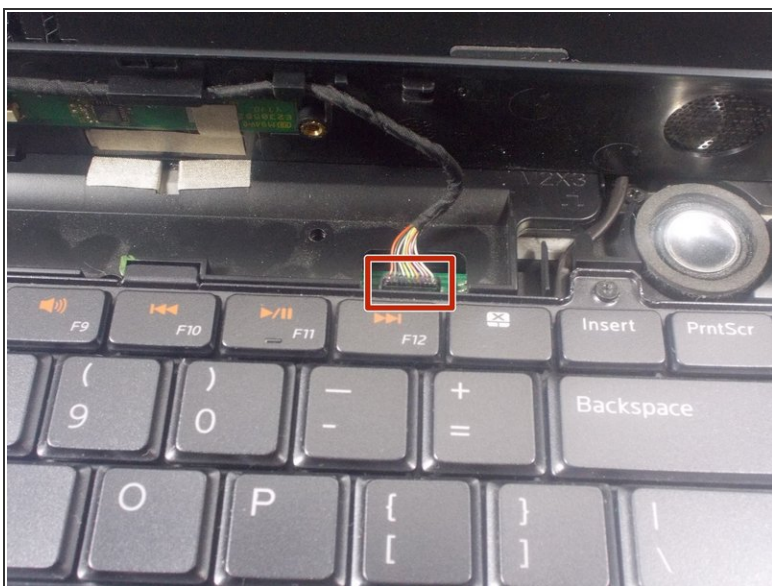
- Open the display to provide room for the palm rest to come out.
- In the hard drive bay, push the "push" pad to lift up the palm rest.

Step 19



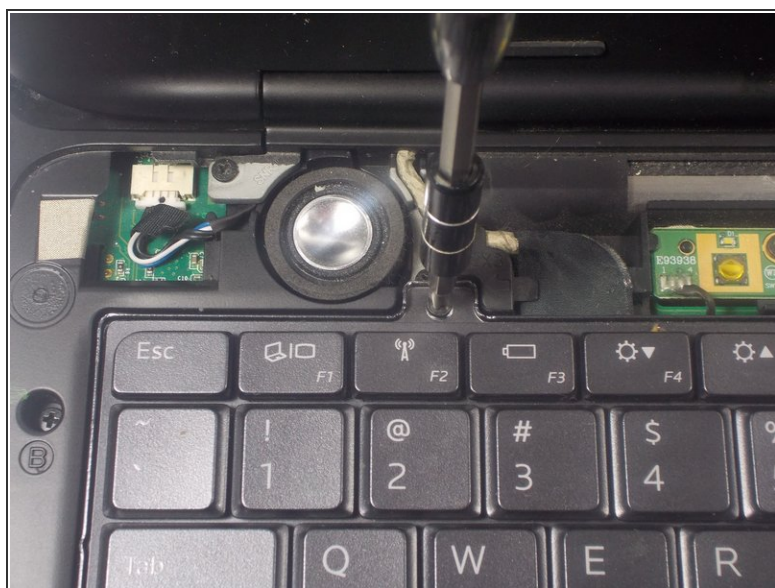
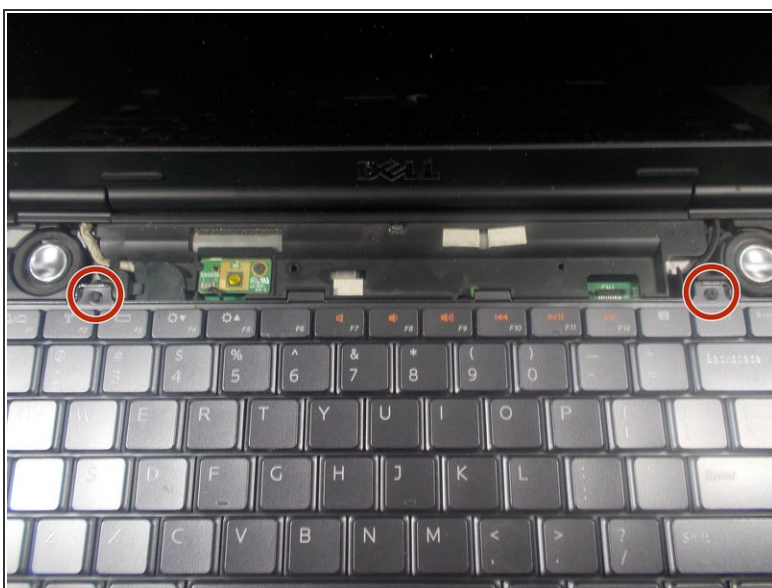
- Disconnect the track pad cable by flipping up the gray clamp and lifting the cable up.

Step 20



- Disconnect the status bar cable by pulling the pin connector upward.
- Finish lifting up the palm rest.

Step 21 — Keyboard



- Use a JIS 1 screwdriver to remove (2) 2.5mm screws located near the top of the keyboard.

Step 22



- Disconnect the keyboard's ribbon cable marked "A" by pushing out the two black tabs towards the ribbon cable.
- Remove the cable from its connection terminal by sliding it out. Finish lifting up the keyboard and set it to the side.

Step 23 — Display



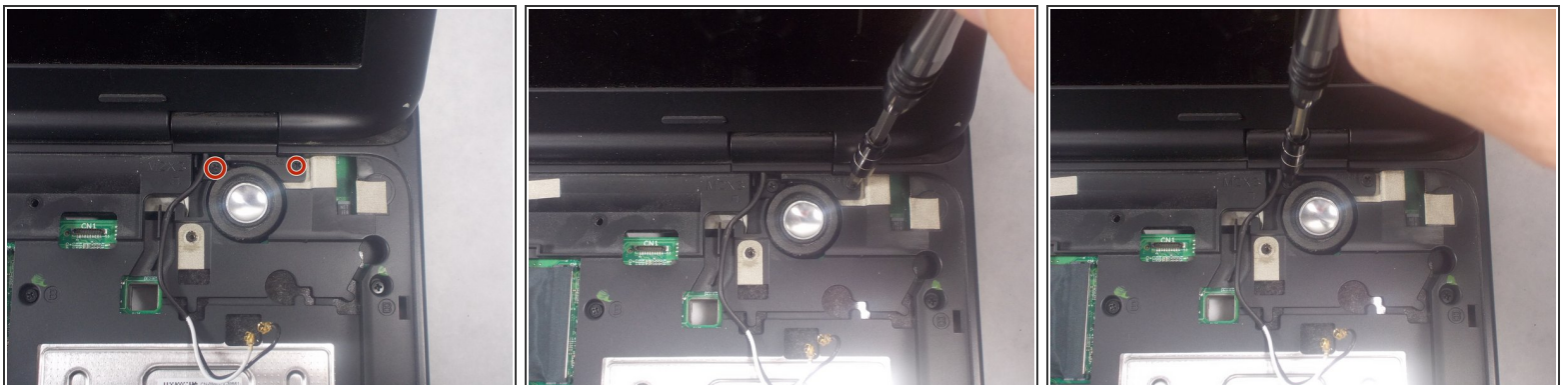
- Disconnect the display ribbon cable by pulling the cable to the right by its sheathed plastic connector.

Step 24



- Use a JIS 1 screwdriver to remove (2) 7mm screws on the underside of the laptop near the battery bay.

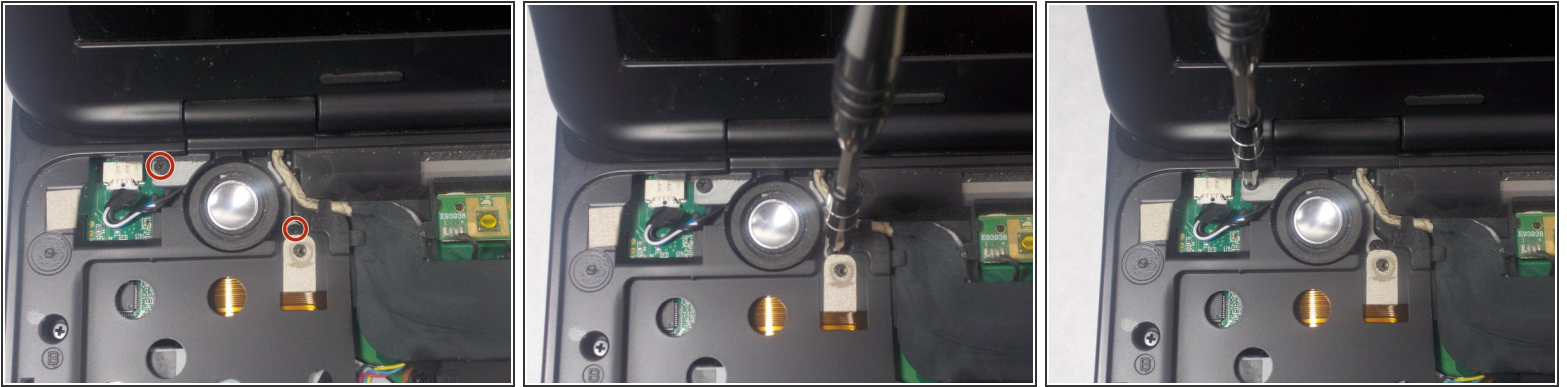
Step 25



- Remove (2) 4mm screws with a JIS 1 screwdriver that are holding down the right side display anchor.

⚠ Be careful not to puncture the speaker membranes with the screwdriver.

Step 26



- Remove (2) 4mm screws with a JIS 1 screwdriver that are holding down the left side display anchor.

Step 27



- Lift the display assembly up and off of the main body of the laptop.

To reassemble your device, follow these instructions in reverse order.