



# Samsung NP700Z5AH Optical Drive Replacement

Use this guide to replace the optical drive in your Samsung NP700Z5AH.

Written By: Erik



---

## INTRODUCTION

This guide provides detailed steps to remove and replace the device's Optical Drive in the Samsung NP700Z5AH device.

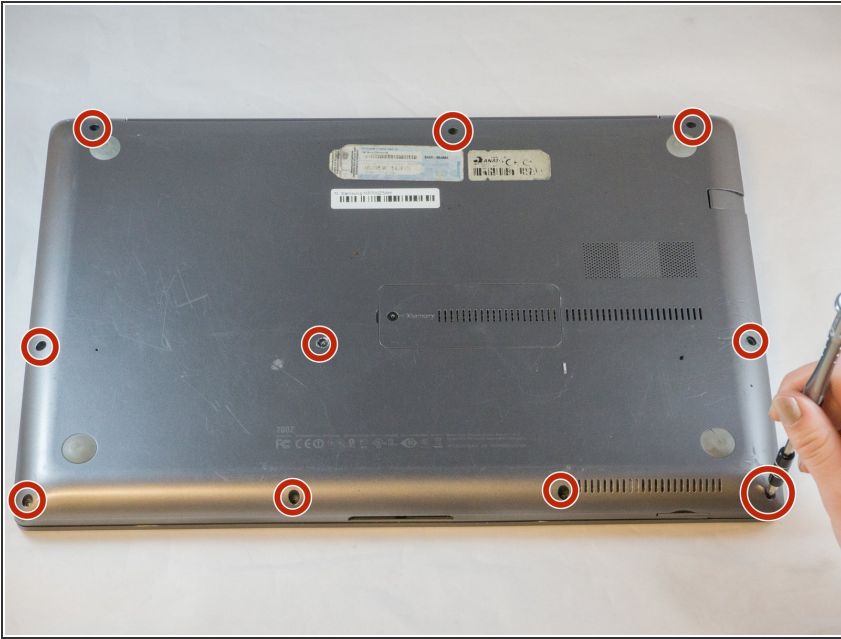
---



### TOOLS:

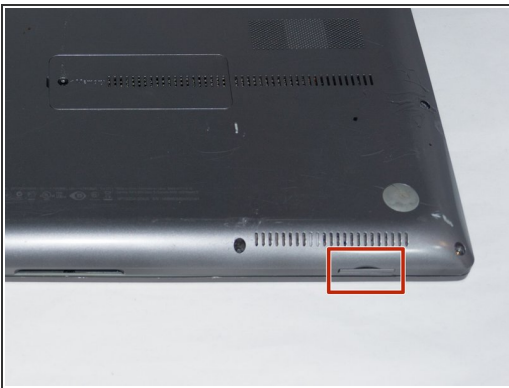
- [Phillips #00 Screwdriver](#) (1)
  - [Tweezers](#) (1)
-

## Step 1 — Battery



- Remove the ten 6.6mm Philips#00 screws securing the lower case to the upper case.

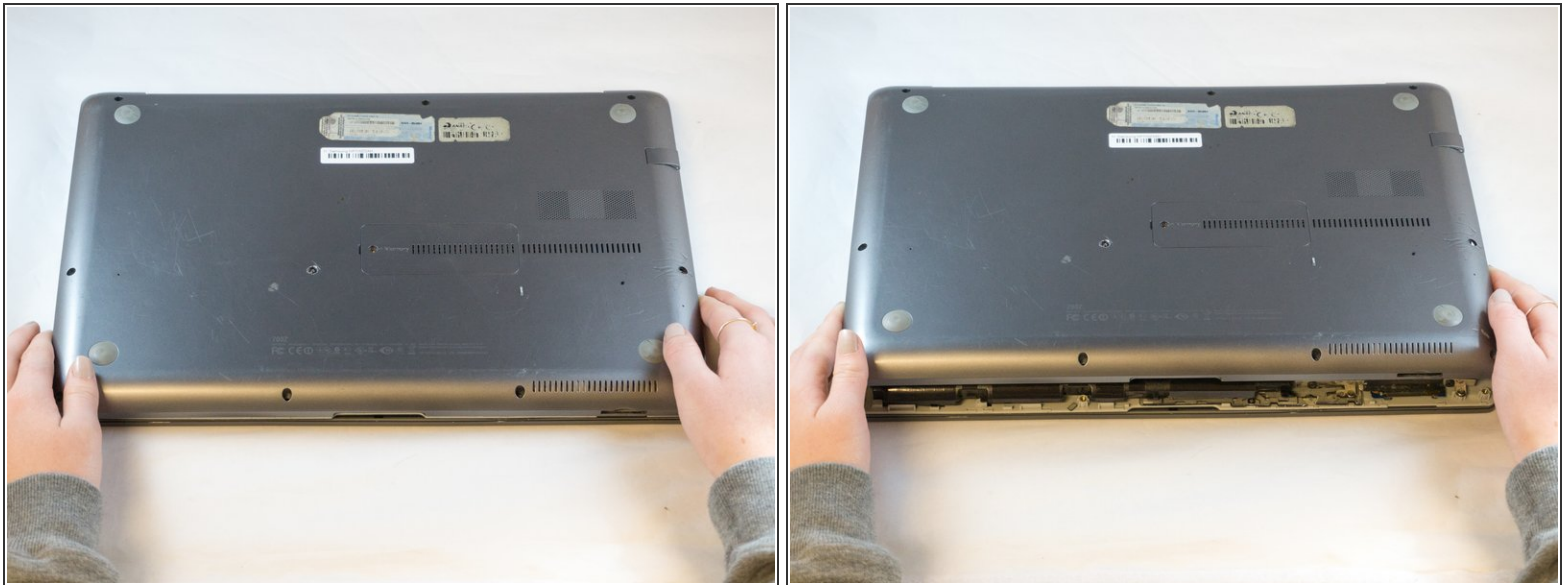
## Step 2



- Using your fingers, pinch the edge of the SD card and pull to remove it.

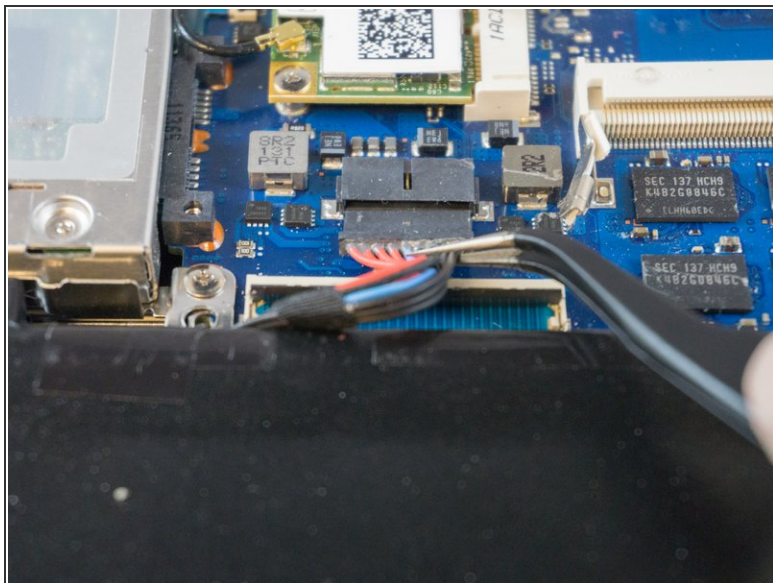
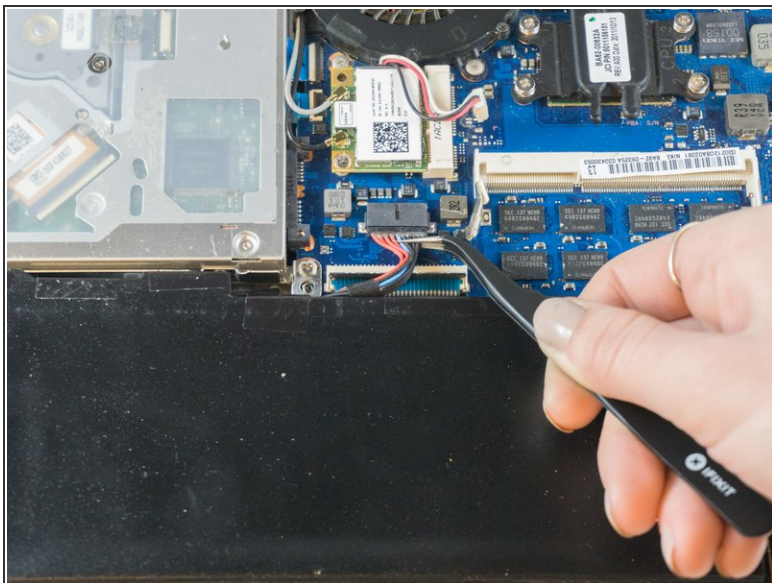


## Step 3



- Wedge your fingers in between the upper case and the lower case
- Gently pull the lower case away from the upper case to remove it

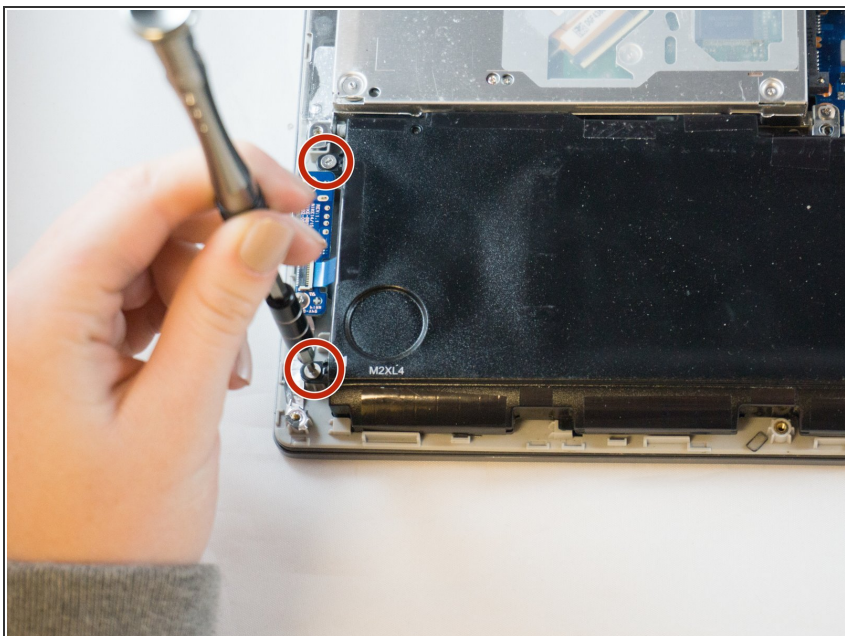
## Step 4



- Using tweezers or your fingertips, carefully pull on the battery connector to disconnect it from the motherboard.

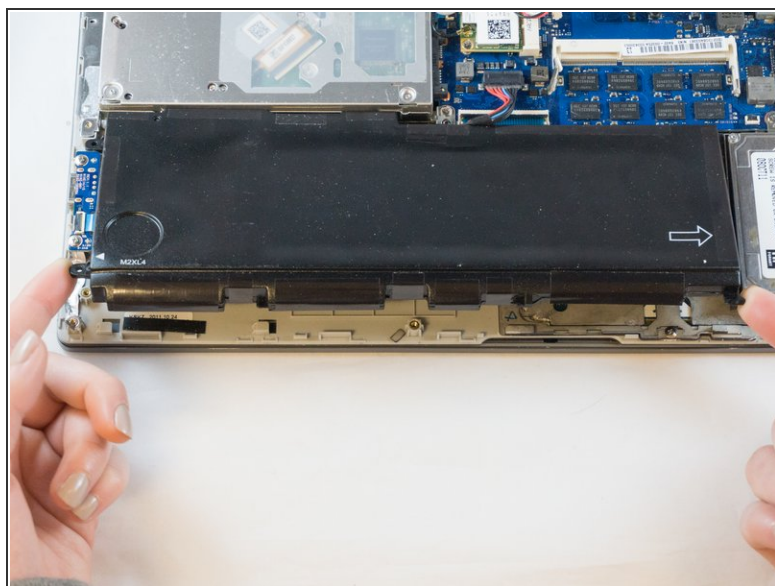
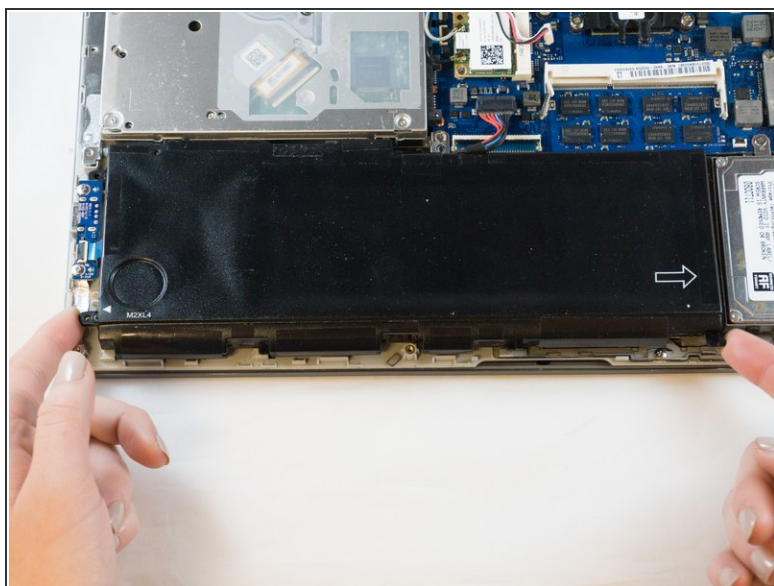
⚠ Be sure to pull straight backwards, or you risk damaging the wires.

## Step 5




- Remove the two 4.4mm Phillips#00 screws from the battery case.

## Step 6

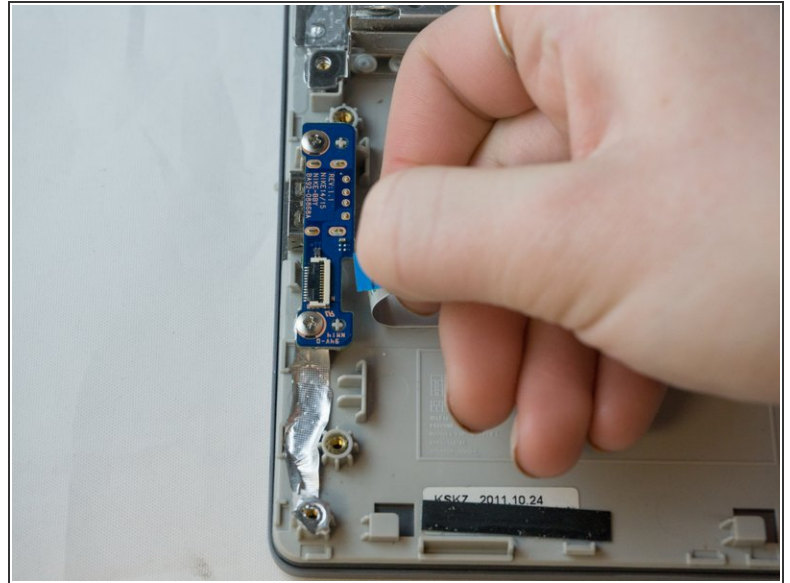
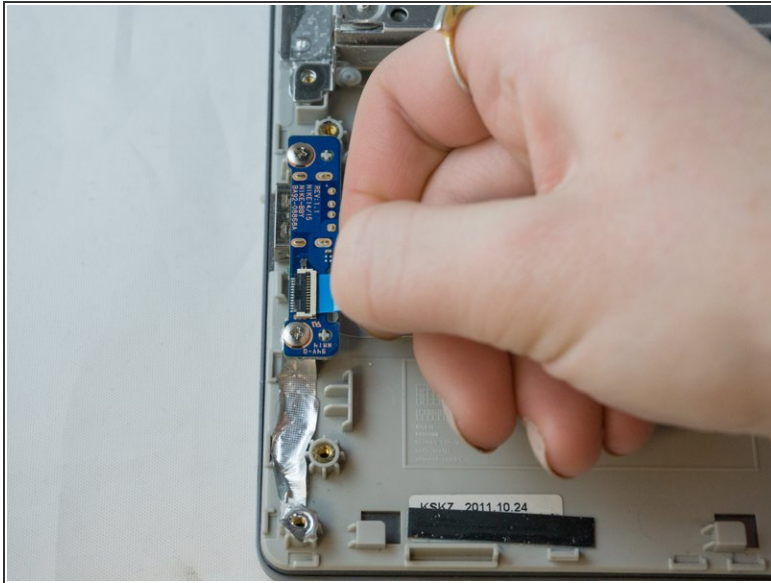


- Place your fingers on the corner sections of the battery.
- Lift to remove the battery.

 If you choose to use tools to remove the battery be careful not to damage it. A damaged lithium-ion battery may leak dangerous chemicals and/or catch fire. Use only plastic pry tools.

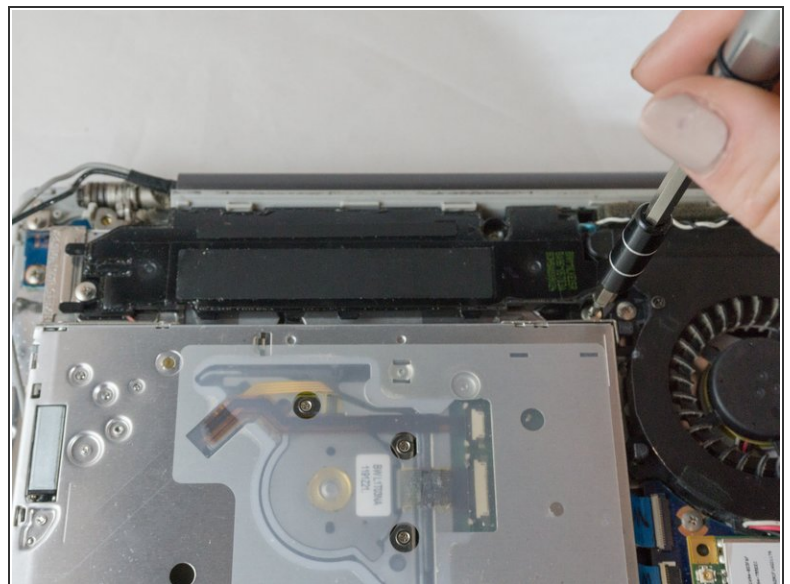
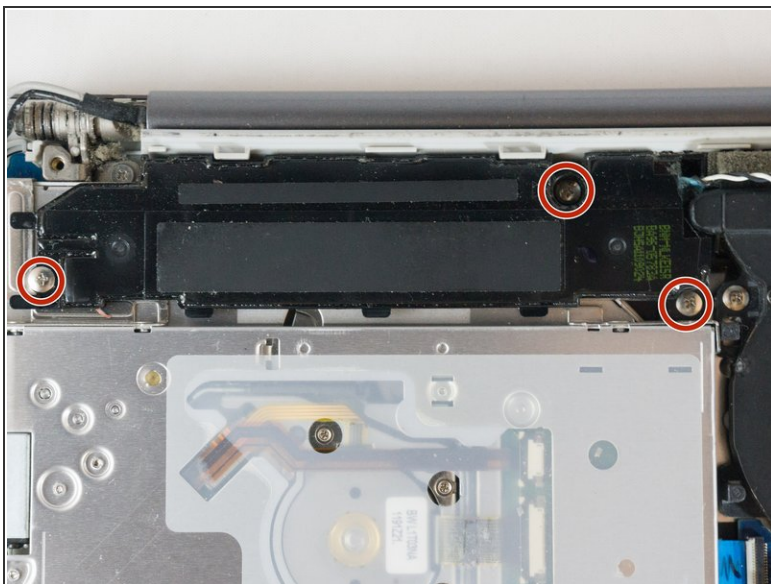


## Step 7 — Optical Drive



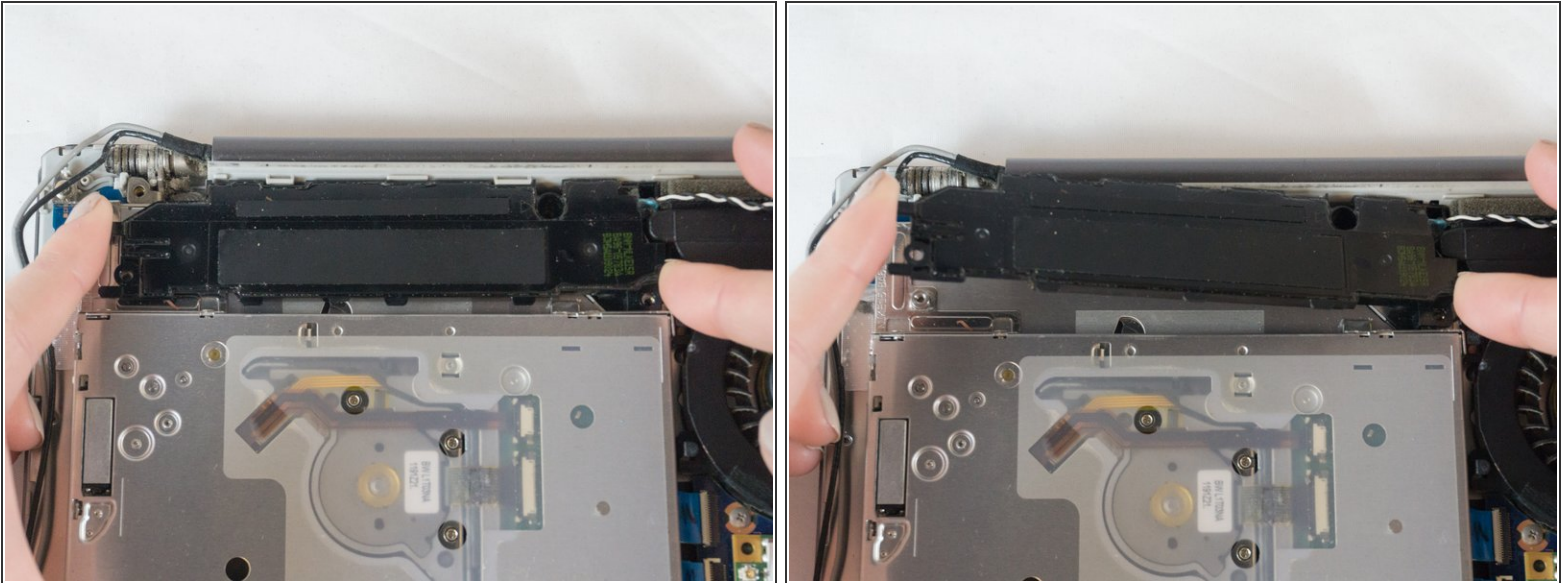
- Using your fingers, grasp the ribbon cable connected to the optical drive and pull it straight out to disconnect it.
- ☑ To reinstall the cable, hold it near the end and push it straight into the connector, being careful not to kink the cable.

## Step 8



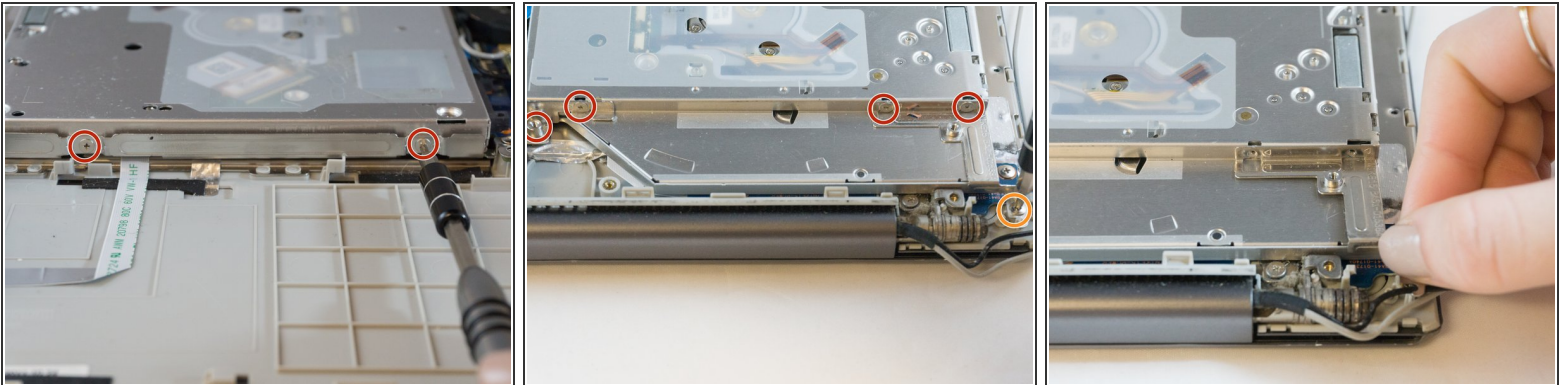
- Using the Phillips#00 remove the three 3.5mm screws that secure the speaker to the bottom case.

## Step 9



- With your fingers, grasp the edges of the speaker and slide it up and away from the fan to lift it out of the case.

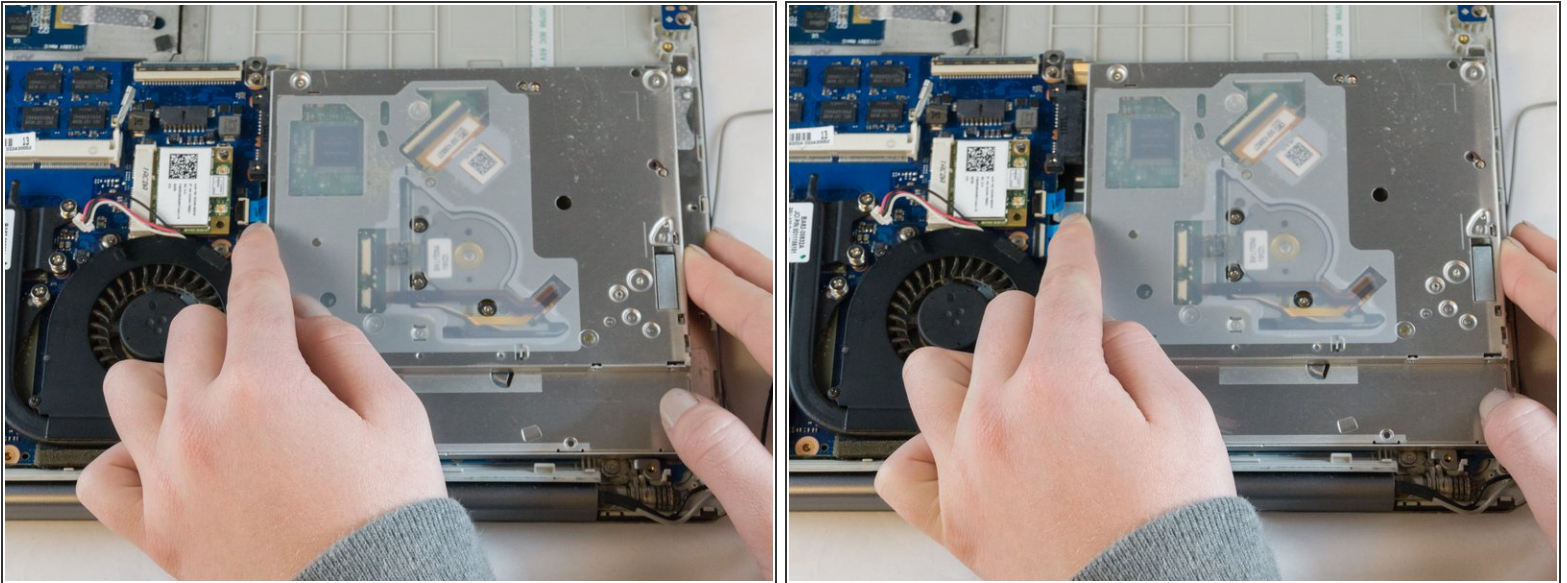
## Step 10



- With the Phillips#00, remove the following screws holding the optical drive to the metal brackets.
  - Six 2.4mm screws
  - One 3.4mm screw
- Using your fingers, grasp the metal brackets and remove them.



## Step 11



- Place your fingers on either side of the optical drive and slide it away from the fan to remove it.

To reassemble your device, follow these instructions in reverse order.