



Philips Norelco OneBlade Exterior Casing Replacement

Replace a damaged or worn exterior casing on a Philips Norelco OneBlade.

Written By: Joshua Etchberger



INTRODUCTION

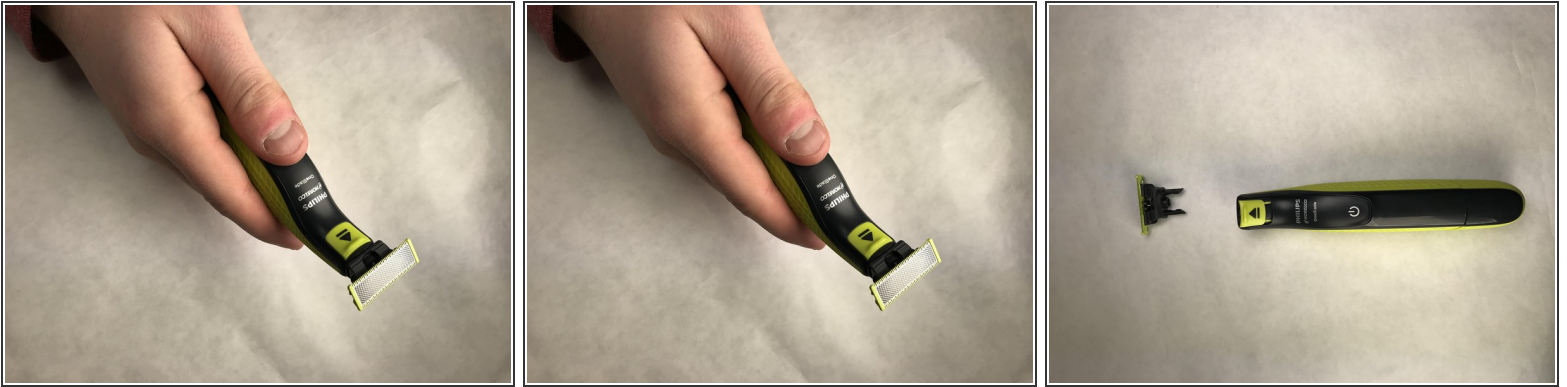
Replacing the exterior casing on a Philips Norelco OneBlade requires little time, no tools, and a replacement casing.



PARTS:

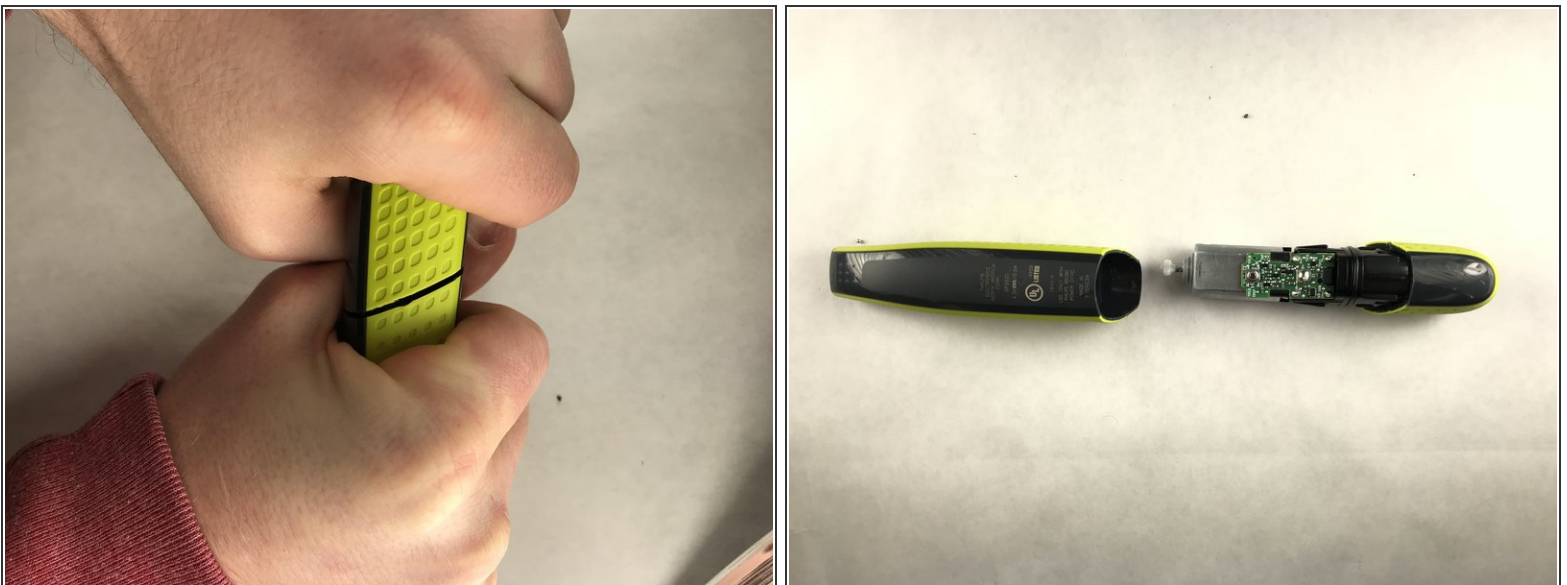
- [Replacement Casing](#) (1)
-

Step 1 — Exterior Casing




- Ensure razor is off, and razor blade has been removed.

Step 2



- Locate crease in bottom third of razor.
- Hold razor in both hands, and place thumbs near crease.
- Slightly bend the razor near crease.
- Pull top razor apart.

 **Caution, device may turn on upon removal. Turn off razor before continuing.**

Step 3



- ★ Power button should face forward in same direction as circuit board. The crease on each casing component should line up.

To reassemble your device, follow these instructions in reverse order.

Please dispose of exterior casing properly. For recycling information, please contact your local waste management facilities or visit www.recycle.philips.com