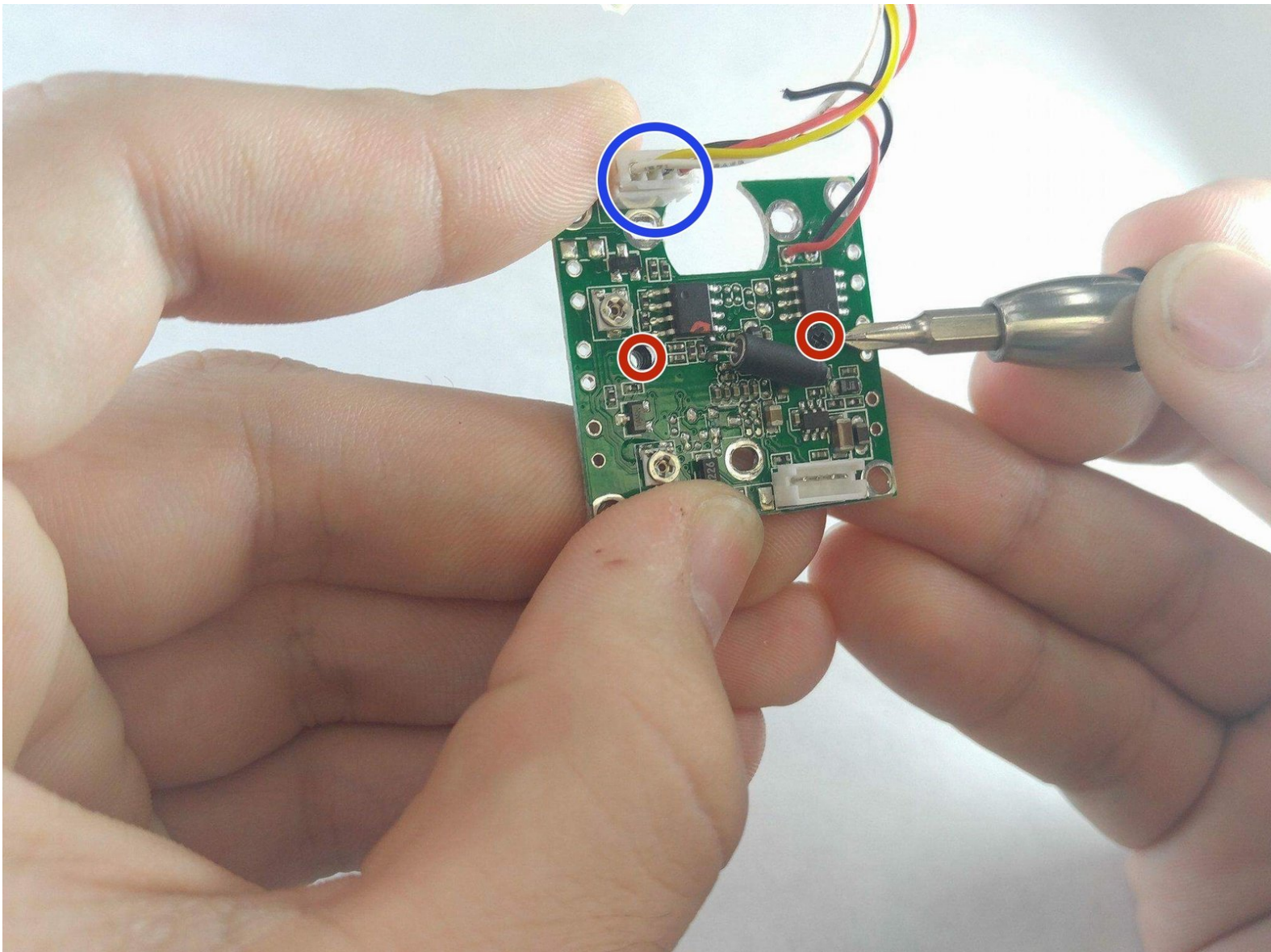




Lorex MC6950 Circuit Board Replacement

This guide shows how to disassemble the Lorex MC6950 and replace the circuit board.

Written By: Elijah Conlin



INTRODUCTION

The lens of the Lorex MC 6950 is to be replaced. This will require taking the camera apart and removing the circuit board from it's LED containment. To do this, a metal spudger and a #J0 screwdriver will be needed.



TOOLS:

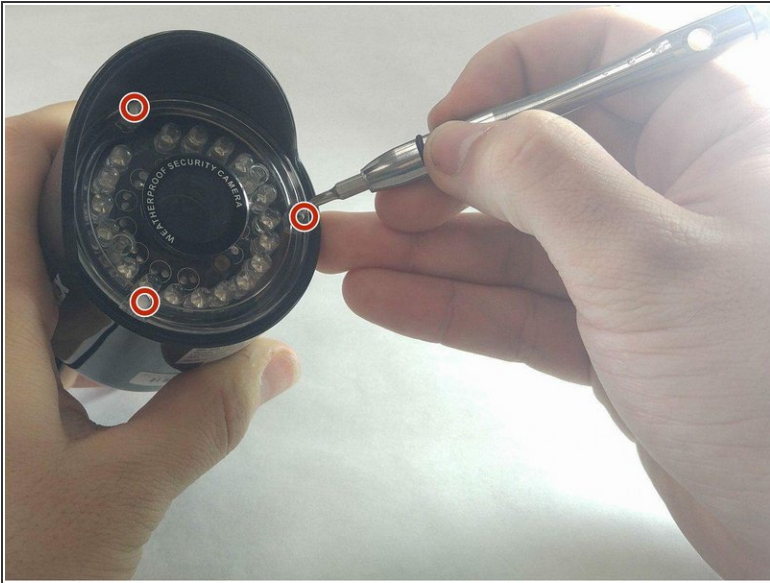
- [Metal Spudger](#) (1)
- [Soldering Iron](#) (1)
- [JIS #0 Screwdriver](#) (1)



PARTS:

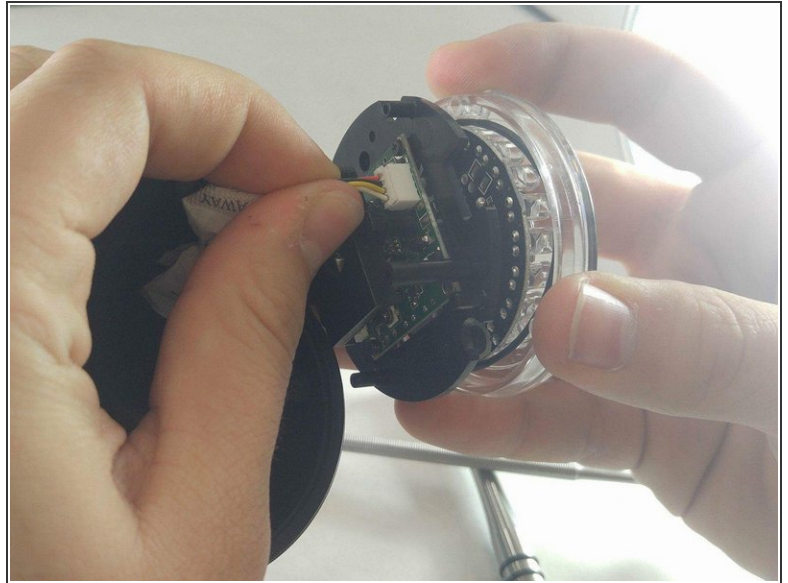
- [Lorex MC6950 Circuit Board](#) (1)

Step 1 — Circuit Board



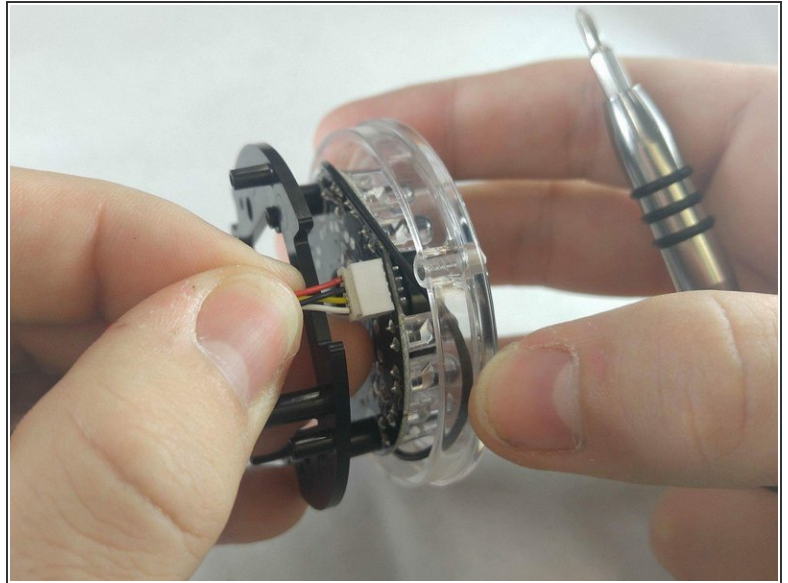
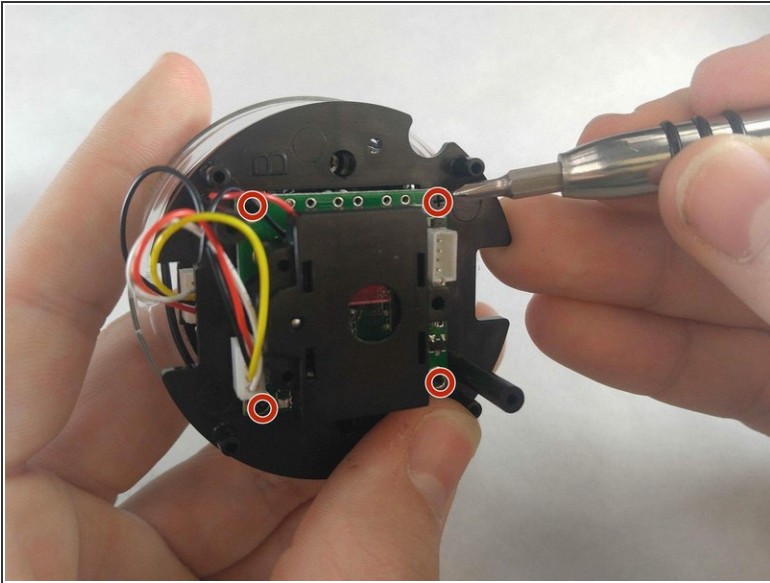
- To remove the circuit board, you must begin by removing the three screw caps and the 15mm JIS 0 screws associated with them located on the plastic containment shell that the camera is in.

Step 2



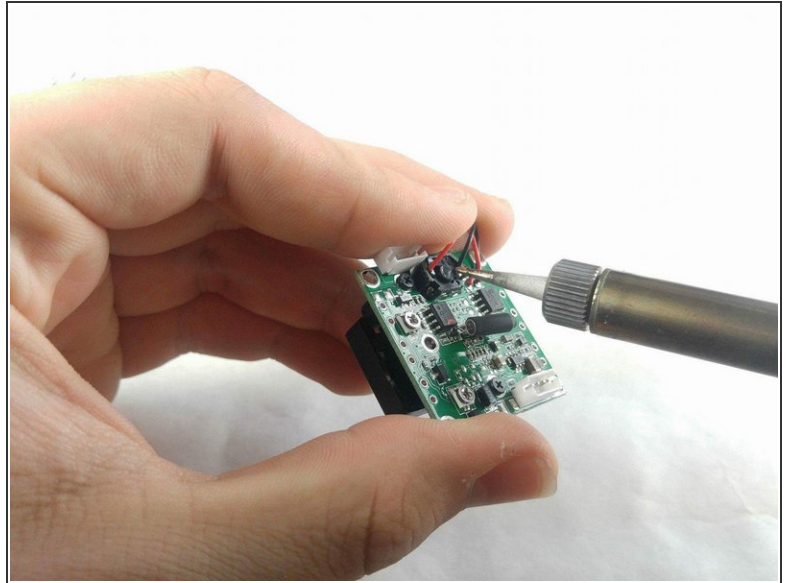
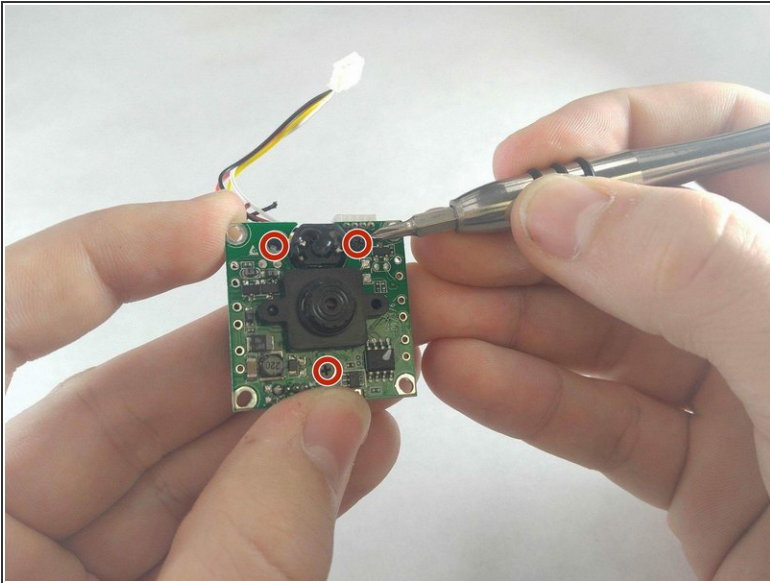
- Next, the camera must be removed. A metal spudger will be useful to pry this out as it is sealed inside the outer containment shell.
- Once the camera is removed, remove the wires from the outer containment shell.
- Be careful. The metal spudger could damage the camera if not handled with care.

Step 3



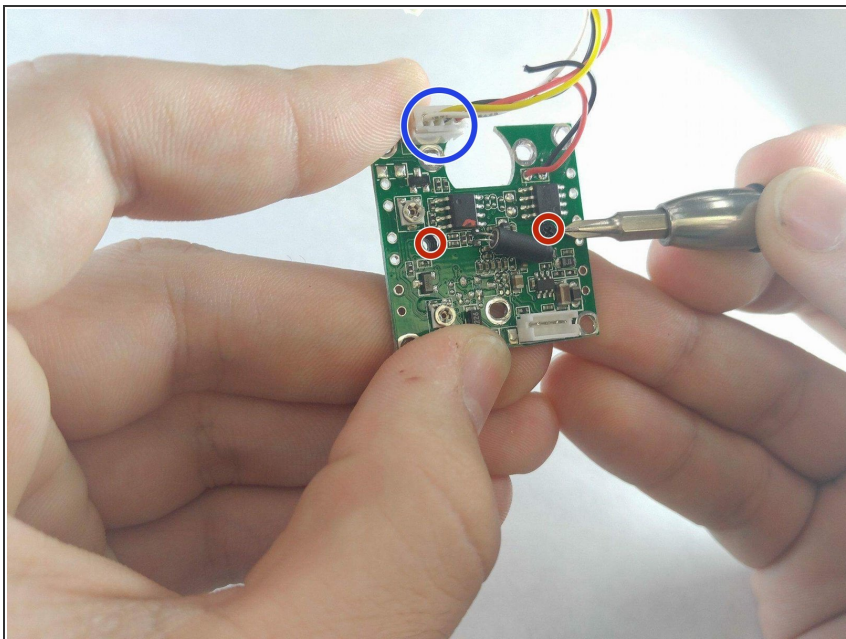
- With the camera in hand, the circuit board must be separated from the LED containment shell. There is a 5mm JIS 0 screw at every corner of the circuit board.
- The wires attaching the circuit board to the shell should be removed as well.

Step 4



- Now the motor, lens, and wires must be removed from the circuit board. There are three 5mm JIS 0 screws located on the lens side of the circuit board to remove the motor housing.
- ☞ The motor housing will need to be soldered back onto the new circuit board when reassembling. The wires should come from the circuit board and connect to the motor housing on the opposite of the lens side of the circuit board.

Step 5



- The lens has two 5 mm JIS 0 screws located under the motor's previous location.
- As a final step, the wires that connected the board to the containment shell will need to be removed from the board.
- ★ The lens should be the first component placed when reassembling the camera

To reassemble your device, follow these instructions in reverse order.