



Lenovo G50-80 80E5 Bottom Access Panel Replacement

This guide will instruct the user how to remove the bottom access panel of their Lenovo G50-80 80E5 laptop.

Written By: Brett Bousquet



INTRODUCTION

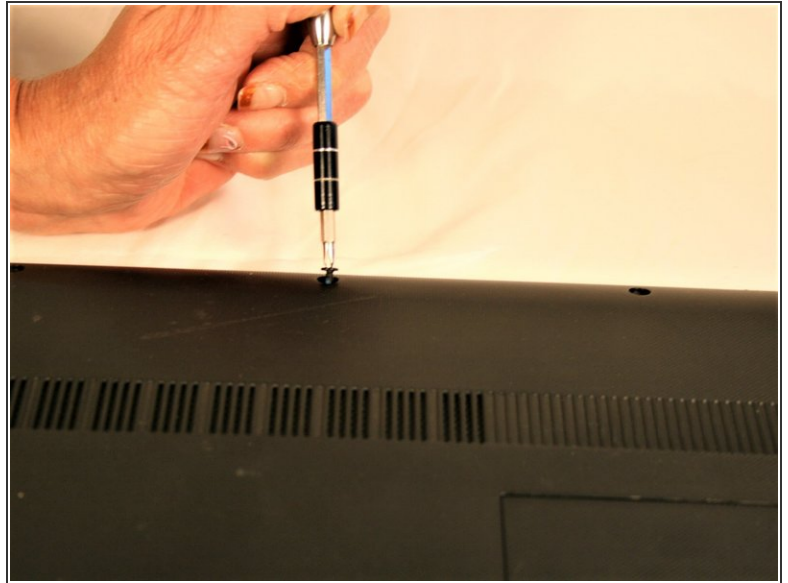
This guide will instruct the user how to remove the bottom access panel of their Lenovo G50-80 80E5 laptop for replacement, or to allow access to other parts for repair or replacement.



TOOLS:

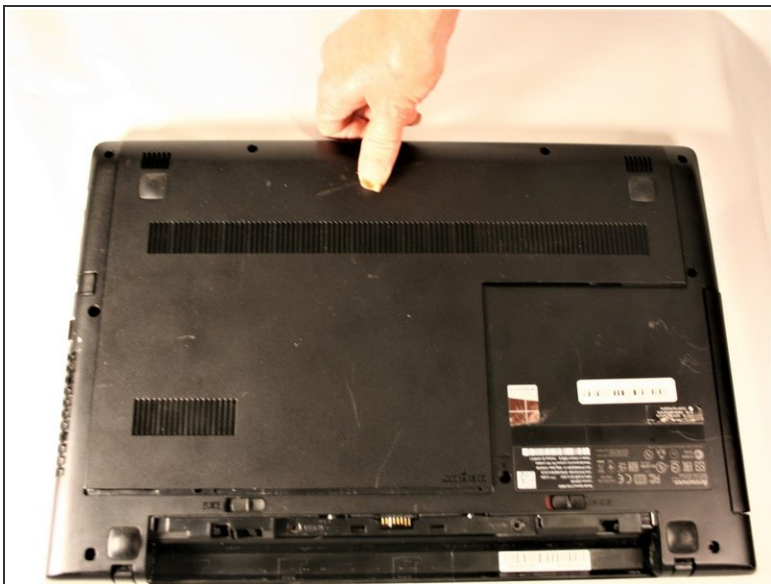
- [Phillips #0 Screwdriver](#) (1)
-

Step 1 — Bottom Access Panel



- Remove the three screws securing the outer cover of the laptop using a Phillips #0 screwdriver.

Step 2



- Slide the cover away from the hinges and lift the panel off.

To reassemble your device, follow these instructions in reverse order.