



Written By: Mario Gjyli





## TOOLS:

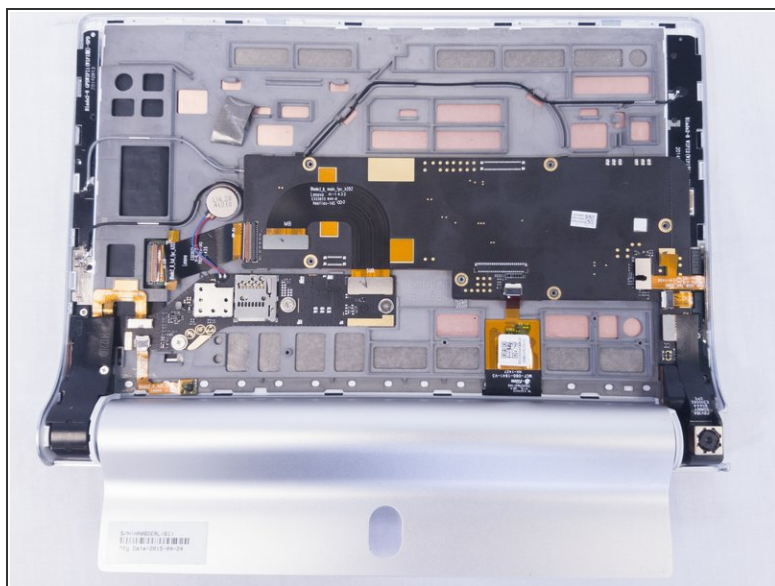
- [Phillips #00 Screwdriver](#) (1)
- [Spudger](#) (1)
- [iFixit Opening Tools](#) (1)



## PARTS:

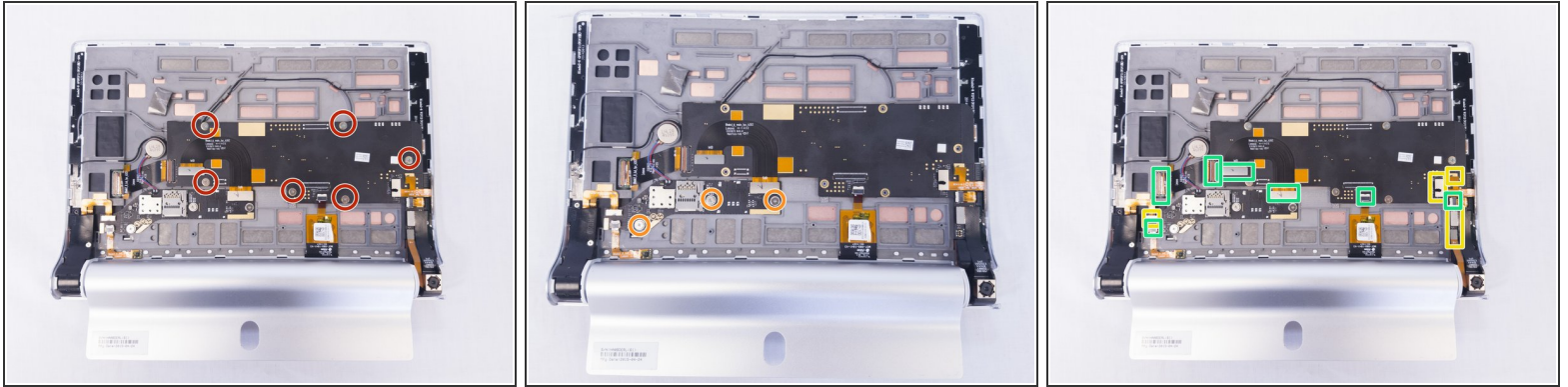
- [Lenovo Yoga 2 Tablet Wifi Module](#) (1)

## Step 1 — Wifi Antenna



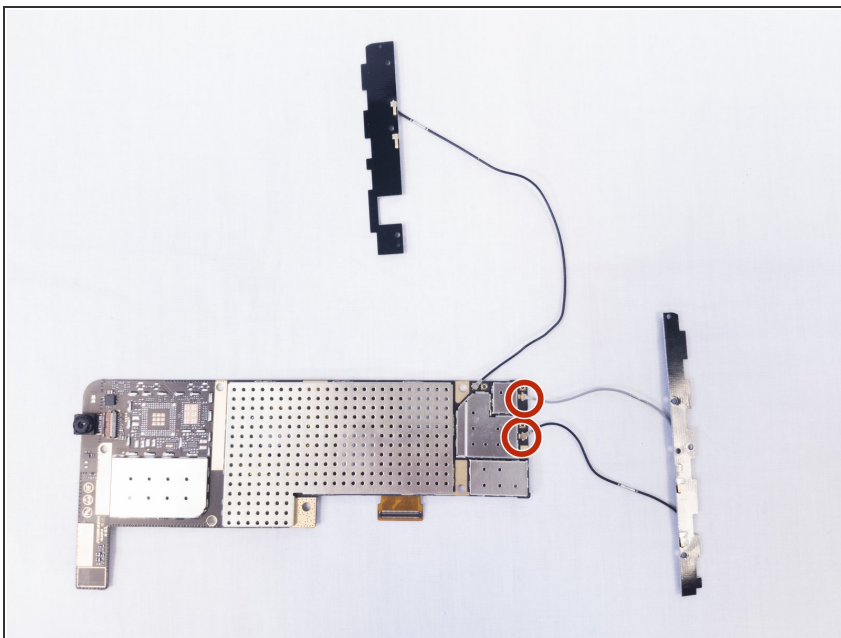
- Remove the three screws on the back of the device with the Phillips Screwdriver #00 bit.
- Using the blue opening tools or spudger, gently remove the back cover to expose the interior of the tablet.

## Step 2



- Remove the six screws on the back of the motherboard with the Phillips Screwdriver #00 bit.
  - Remove the three screws on the back of the secondary board with the Phillips Screwdriver #00 bit.
  - Remove the ribbon cables connecting the boards to the other electrical components.
  - Remove the ZIF connectors connecting the boards to the other electrical components.
- ⚠ Some of the ribbon cables are secured with clips, simply pry up the clips before sliding them out of the pin connectors.

## Step 3



- Disconnect the antenna module from the motherboard.

To reassemble your device, follow these instructions in reverse order.