



# Lenovo Yoga Tablet 2 830-F Battery Replacement

Before beginning, acquire a replacement battery...

Written By: Charles Rhode



# INTRODUCTION

Before beginning, acquire a replacement battery from a retailer of your choice and begin with the device off and a clear, static-free workspace.

## TOOLS:

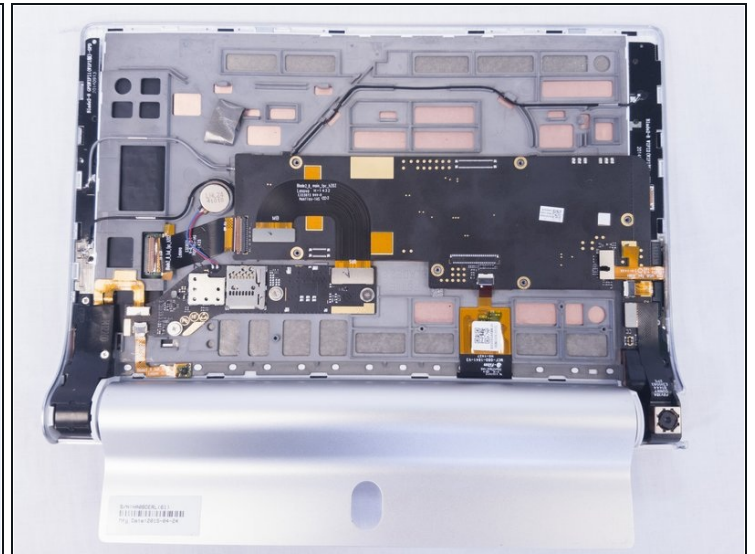
Phillips #00 Screwdriver (1)

Spudger (1)

iFixit Opening Tool (1)

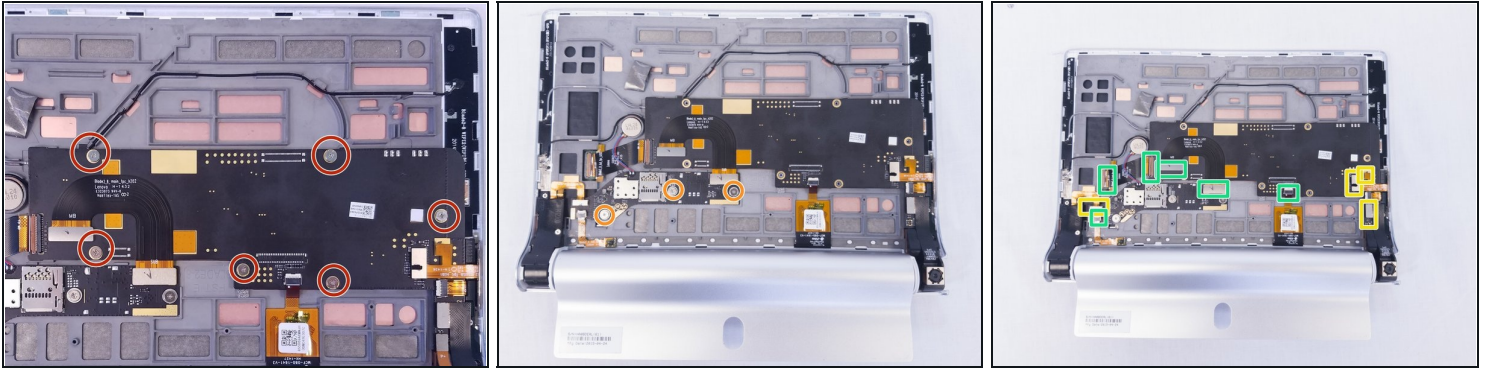
Tweezers (1)

## Step 1 — Battery



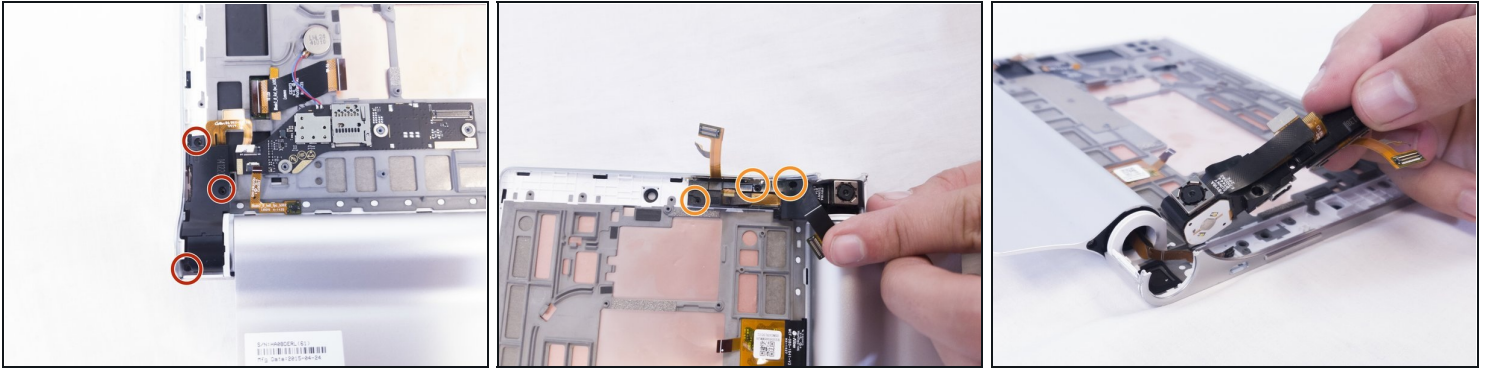
- Remove two 3mm screws on the back of the device with a Phillips #00 bit.
- Remove the single 2mm screw with a Phillips #00 bit.
- Using the blue opening tool or spudger, gently remove the back cover to expose the interior of the tablet.

## Step 2



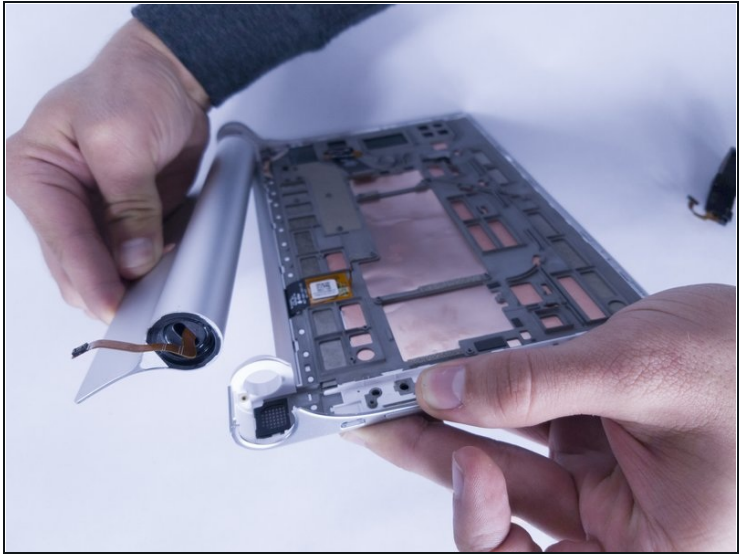
- Remove the six 3mm screws on the back of the motherboard with the Phillips Screwdriver #00 bit.
  - Remove the three 3mm screws on the back of the secondary board with the Phillips Screwdriver #00 bit.
  - Remove the ribbon cables connecting the boards to the other electrical components
  - Remove the ZIF connectors connecting the boards to the other electrical components
- ⚠ Some of the ribbon cables are secured with clips, simply pry up the clips before sliding them out of the pin connectors.

### Step 3



- Remove the three 2mm screws on the back of the left speaker module with the Phillips Screwdriver #00 bit.
- Remove the three 2mm screws on the back of the right speaker module with the Phillips Screwdriver #00 bit.
- Gently remove both the left and right speaker modules.

## Step 4



- Using the blue opening tool or spudger, pry the battery compartment off of the high located on the right hand side of the back.
- ⚠ This may require a decent amount of force to accomplish. If you feel like the white plastic holder will break, try using the spudger at a different angle.
- ⚠ Do not attempt to use the spudger on the right hand side of the device. It must be done on the left side.



## Step 5



- Remove this metallic sticker with your fingernail to expose the screw underneath.
- Remove the 3mm screw under the sticker with the Phillips Screwdriver #00 bit.
- Using the tweezers, pull off the black clip that secures the battery compartment. This may require some force.

## Step 6



- Remove the hinge clip from one side of the battery compartment. Use the spudger tool if necessary.
- The battery should be able to slide from the compartment.

## Step 7



- Replace the old battery with the new battery

⚠ Be careful not to damage the ribbon cable on the new battery when inserting it into the compartment and reassembling the device.

---

To reassemble your device, follow these instructions in reverse order.