



Installing MacBook Air Models A1237 and A1304 AirPort/Bluetooth Board

Author: Walter Galan

Tools used in this guide

- [Phillips #00 Screwdriver](#) (1)
- [Spudger](#) (1)

Parts relevant to this guide

- [MacBook Air AirPort/Bluetooth Board](#) (1)

Reclaim your singular source of internet connectivity by replacing your broken AirPort/Bluetooth board.



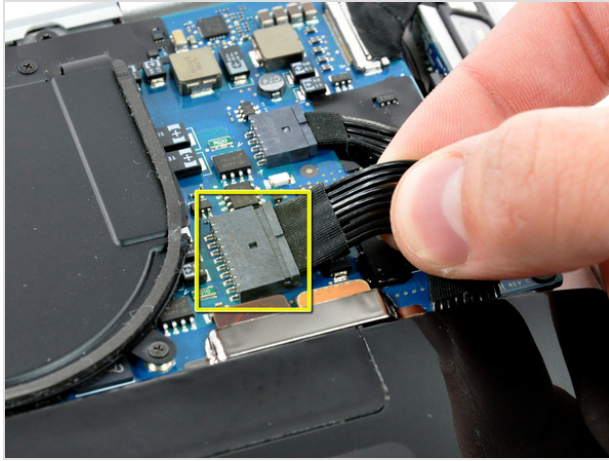
Step 1 — Lower Case

- Remove the following 10 screws securing the lower case to the Air:
 - Six 2.8 mm Phillips screws.
 - Two 3.8 mm Phillips screws.
 - Two 5.4 mm Phillips screws.



Step 2

- Slightly lift the lower case near the vents and push it toward the rear of the computer to free the mounting tabs.



Step 3 — Battery

- Disconnect the battery connector by pulling it straight out of its socket.



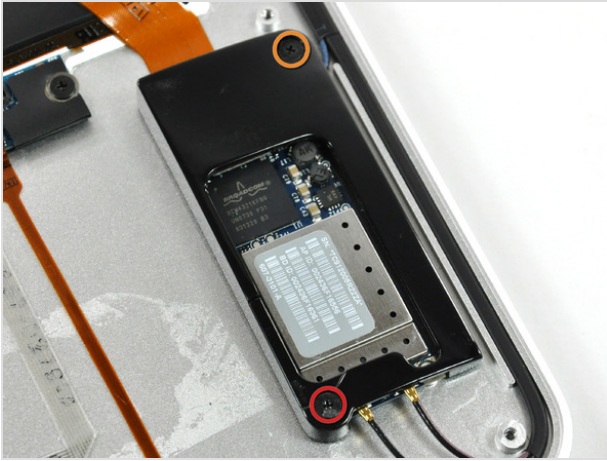
Step 4

- Remove the following nine screws securing the battery to the Air:
 - Four 2.9 mm Phillips.
 - Four 3.8 mm Phillips.
 - One 7.2 mm Phillips.



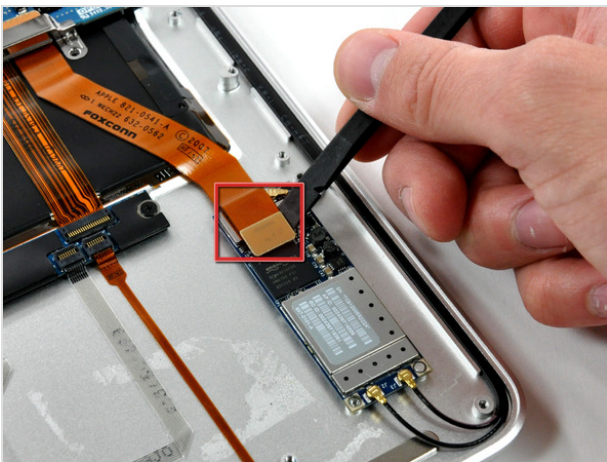
Step 5

- Lift the battery out of the Air.



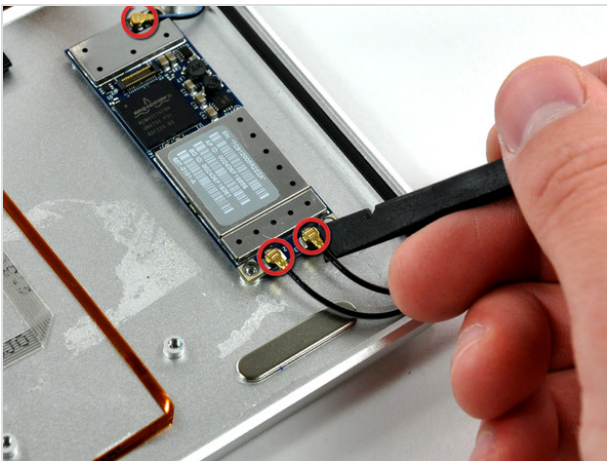
Step 6 — AirPort/Bluetooth Board

- Remove the two following screws securing the AirPort/Bluetooth board bracket to the upper case:
 - One 4.7 mm Phillips.
 - One 3.9 mm Phillips.
- Lift the AirPort/Bluetooth bracket out of the upper case.



Step 7

- Using a spudger, pry the AirPort/Bluetooth ribbon cable connector straight up off the AirPort/Bluetooth board.



Step 8

- Use a spudger to pry the three antenna cables up off the AirPort/Bluetooth board.



Step 9

- Remove the single 3.2 mm Phillips screw from the upper right corner of the AirPort/Bluetooth board.
- Lift the AirPort/Bluetooth board out of the upper case.

To reassemble your device, follow these instructions in reverse order.

This document was last generated on Feb 25, 2012.