



# Installing MacBook Pro 15" Unibody Late 2008 and Early 2009 Left Fan

Author: Walter Galan

## Tools used in this guide

- [Phillips #00 Screwdriver](#) (1)
- [Spudger](#) (1)

## Parts relevant to this guide

- [MacBook Pro 15" Unibody \(Late 2008/Early 2009/Mid 2009\) Left Fan](#) (1)

Replacing a defective fan is pretty easy and will keep your laptop running cool.



### Step 1 — Access Door

- With the case closed, place the Unibody top-side down on a flat surface.
- Depress the grooved side of the access door release latch enough to grab the free end. Lift the release latch until it is vertical.



### Step 2

- The access door should now be raised enough to lift it up and out of the Unibody.



## Step 3 — Battery

- Be sure the access door release latch is vertical before proceeding.
- Grab the translucent plastic tab and pull the battery up and out of the Unibody.
- If the latch is depressed it will lock the battery in place.



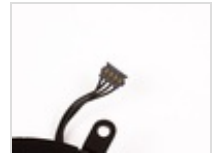
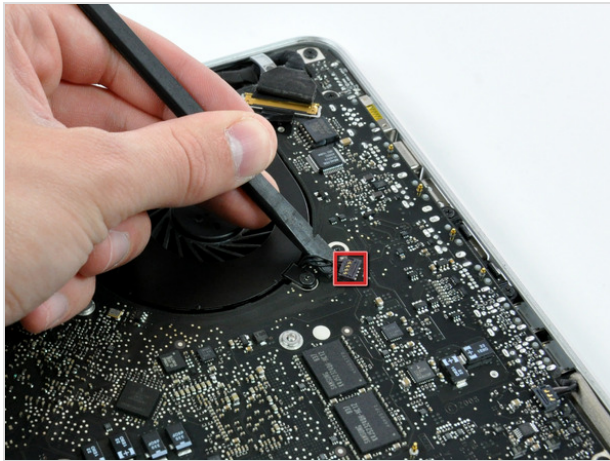
## Step 4 — Lower Case

- Remove the following eight screws securing the lower case to the chassis:
  - One 5.4 mm Phillips screw.
  - Three 14 mm Phillips screws.
  - Four 3.5 mm Phillips screws.





## Step 5

- Using both hands, lift and remove the lower case off the upper case.



## Step 6 — Left Fan

- Use a spudger to pry the fan connector straight up off the logic board.
- It is useful to twist the spudger axially from beneath the fan cable wires to release the connector. 
- The fan socket and the fan connector can be seen in the second and third pictures. Be careful not to break the plastic fan socket off the logic board as you use your spudger to lift the fan connector straight up and out of its socket. The layout of the logic board shown in the second picture may look slightly different than your machine but the fan socket is the same. 



## Step 7

- Remove three 3.5 mm Phillips screws securing the left fan to the upper case and logic board.



## Step 8

- Lift the fan out of the upper case.

To reassemble your device, follow these instructions in reverse order.

This document was last generated on Feb 29, 2012.