



MacBook Pro 15" Core 2 Duo Models A1226 and A1260 Optical Drive Replacement

Author: Walter Galan

Tools used in this guide

- [Phillips #00 Screwdriver](#) (1)
- [Spudger](#) (1)
- [T6 Torx Screwdriver](#) (1)

Parts relevant to this guide

- [MacBook/MacBook Pro 15" 8x SuperDrive](#) (1)
- [MacBook/MacBook Pro 15" 6x SuperDrive](#) (1)

Upgrade or replace the SuperDrive (requires a slim drive).



Step 1 — Battery

- Use your fingers to push both battery release tabs away from the battery, and lift the battery out of the computer.



Step 2 — RAM Shield

- Remove the three identical 2mm Phillips screws from the memory door.
- Lift the memory door up enough to grip it and slide it toward you, pulling it away from the casing.



Step 3 — Upper Case

- Remove the two 2.8 mm Phillips screws in the battery compartment near the latch.



Step 4

- Remove the following 6 screws:
 - Two 10 mm T6 Torx screws on either side of the RAM slot.
 - Four 14.5 mm Phillips screws along the hinge.



Step 5

- Remove the four 3.2 mm Phillips screws on the port side of the computer.



Step 6

- Rotate the computer 90 degrees and remove the two 3.2 mm Phillips screws from the rear of the computer.




Step 7

- Rotate the computer 90 degrees again and remove the four 3.2 mm Phillips screws from the side of the computer.



Step 8

- Do not yank the upper case off quickly. The case is attached to the logic board via a ribbon cable. 
- Lift up at the rear of the case and work your fingers along the sides, freeing the case as you go. Once you have freed the sides, you may need to rock the case up and down to free the front of the upper case.
- There are four plastic clips above the DVD slot, and another above and to the left of the IR sensor. These clips can be very difficult to disengage without prying. They can also be difficult to re-engage during reassembly.



Step 9

- Disconnect the trackpad and keyboard ribbon cable from the logic board, removing tape as necessary.
- Note: It is possible to replace the hard drive without disconnecting the keyboard from the chassis, but it will need to be held upright to keep it out of the way, while still allowing you both hands to work on the drive removal. Be careful when removing the keyboard-trackpad ribbon cable to ensure that the rear of the upper case is disengaged from the area near the hinge. It is easy to accidentally bend the screw receivers on either side of the keyboard.
- Remove the upper case.



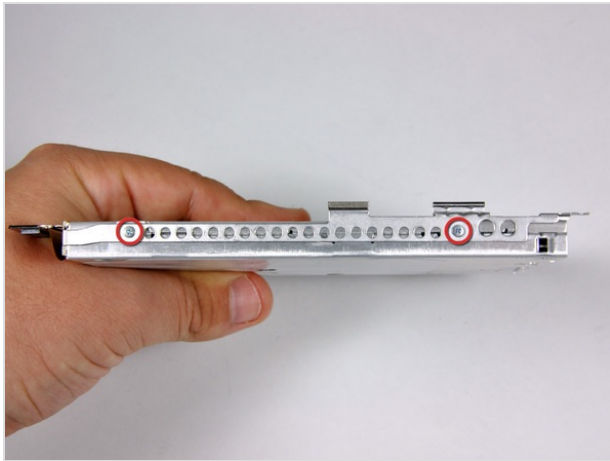
Step 10 — Optical Drive

- Use the flat end of a spudger to disconnect the orange SuperDrive ribbon cable from the logic board, removing tape as necessary.




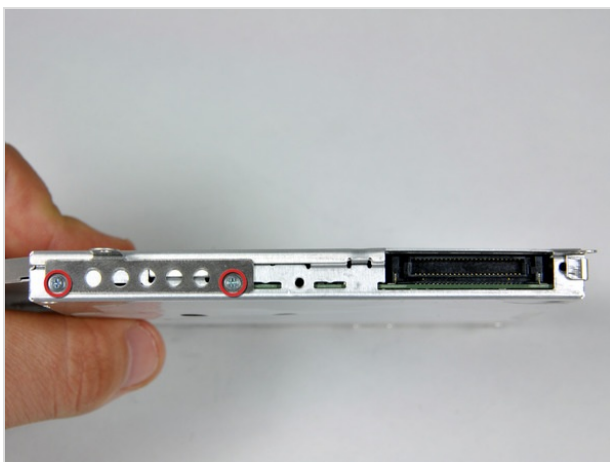
Step 11

- Remove the following 4 screws:
 - Two 3.3 mm silver Phillips screws on either side of the SuperDrive.
 - One 4.7 mm silver T6 Torx screw from the top left corner of the drive.
 - One 6.2 mm black Phillips screw at the top right corner of the drive.
- Lift the optical drive up and out of the computer.



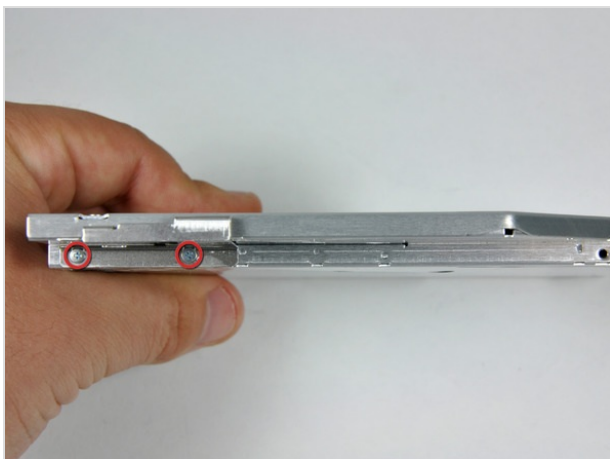
Step 12 — Optical Drive Replacement

- If your new optical drive already has brackets on it, you'll only need to transfer the data cable to your new drive. 
- Remove the two silver Phillips screws securing the mounting bracket to the left side of the optical drive.
- Rotate the drive and disconnect the orange ribbon cable from the optical drive.





Step 13

- Remove the two Phillips screws securing the mounting bracket to the rear of the optical drive.



Step 14

- Rotate the drive and remove the two Phillips screws securing the mounting bracket to the right side of the optical drive.
- If you purchased an optical drive without mounting brackets, simply transfer the three silver metal brackets and orange ribbon cable to your new optical drive. 
- If you have a CD or any other object jammed in your optical drive, we have an [optical drive repair guide](#). 

To reassemble your device, follow these instructions in reverse order.