



# Installing PowerBook G4 Aluminum 15" 1.67 GHz Modem

Author: Andrew Bookholt

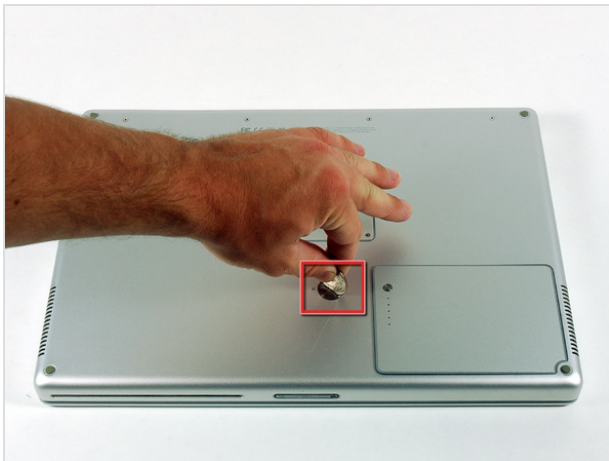
## Tools used in this guide

- [4mm Nut Driver](#) (1)
- [Coin](#) (1)
- [Phillips #00 Screwdriver](#) (1)
- [T6 Torx Screwdriver](#) (1)

## Parts relevant to this guide

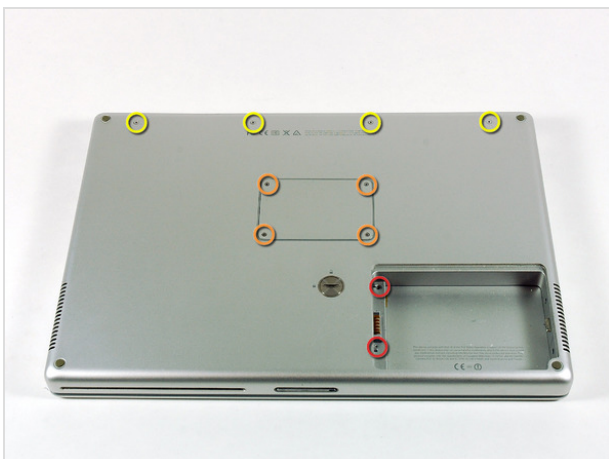
- [G4 Aluminum 15" 1.33/1.5/1.67 GHz Modem](#) (1)

This guide will show you how to remove the modem from your PowerBook.



## Step 1 — Battery

- Use a coin to turn the battery locking screw 90 degrees clockwise.
- Lift the battery out of the computer.



## Step 2 — Upper Case

- Remove the following 10 screws:
  - Two 3 mm Phillips in the battery compartment, on either side of the battery contacts.
  - Four 3 mm Phillips around the memory compartment.
  - Four 16 mm Phillips along the hinge.



## Step 3

- Remove the memory compartment cover.
- Remove the two 12 mm Phillips screws on the Aluminum bracket at the top of the memory compartment.



## Step 4

- Rotate the computer 90 degrees clockwise so the power receptacle faces you.
- Remove the three 3 mm Phillips screws along the edge of the lower case.
- When replacing these screws, you must install them in the correct order. Begin by installing the screw closest to the display hinge, then work your way toward the front of the computer.



## Step 5

- Turn the computer 90 degrees clockwise so the hinge faces you.
- Remove the lower 5 mm Phillips screw on each side of the hinge (two total).



## Step 6

- Rotate the computer 90 degrees clockwise so the ports face you.
- Remove the three 3 mm Phillips screws along the edge of the lower case.
- When replacing these screws, you must install them in the correct order. Begin by installing the screw closest to the display hinge, then work your way toward the front of the computer. Also, be careful not to put the screws in the two holes on either side of the video out port.



## Step 7

- Turn the computer over and open the display.
- Remove the two 4.2 mm long, 1.5 mm hex screws at the top corners of the upper case (two total).
- A T6 Torx driver will work, but repeated use will strip the screws.



## Step 8

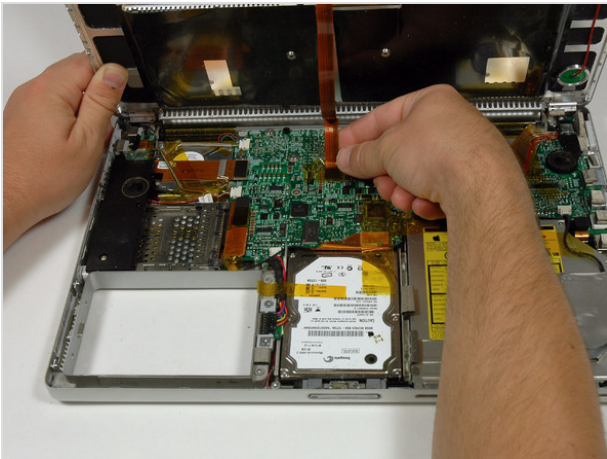
- Grasp the back corners of the upper case and pull up.
- Do not pull the upper case off yet; you still need to disconnect the keyboard and trackpad cable.
- Lift the back of the case up and work your fingers along the sides, freeing the case as you go. Once you have freed the sides, you may need to rock the case up and down to free the front of the upper case.





## Step 9

- Rotate the upper case up and toward the screen, so that the upper case rests against it.



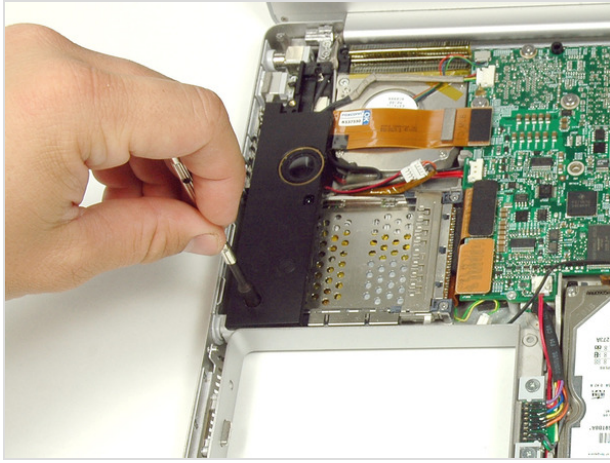
## Step 10

- Remove the amber tape securing the trackpad ribbon to the logic board.
- Disconnect the trackpad ribbon from the logic board by pulling up on the connector.
- Remove the upper case from the computer.



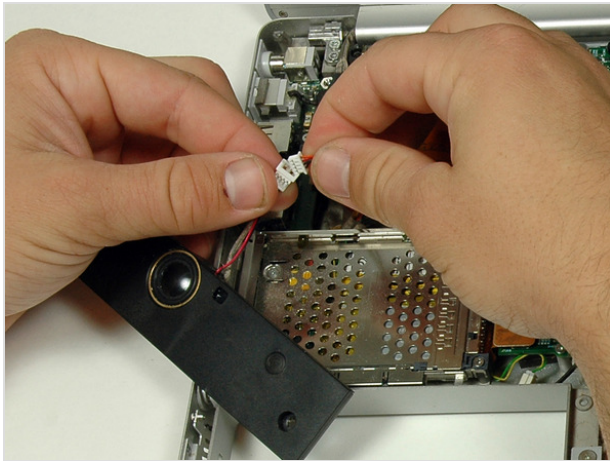
## Step 11 — Left Ambient Light Sensor

- Remove the two 3 mm Phillips screws securing the left ambient light sensor. One is silver and one is black, or both black.
- Disconnect the cable from the Logic board and remove the left ambient light sensor from your computer.



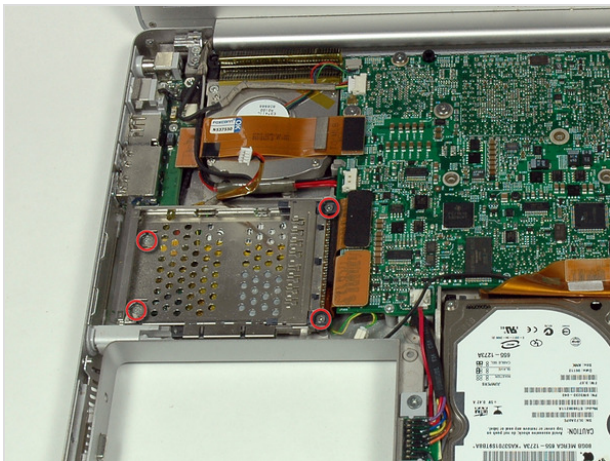
## Step 12 — Left Speaker

- Remove the 4 mm hex nut securing the left speaker.



## Step 13

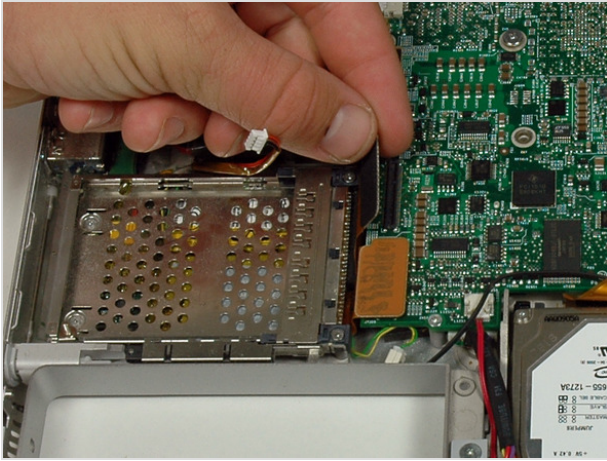
- Disconnect the left speaker cable.



## Step 14 — PC Card Cage

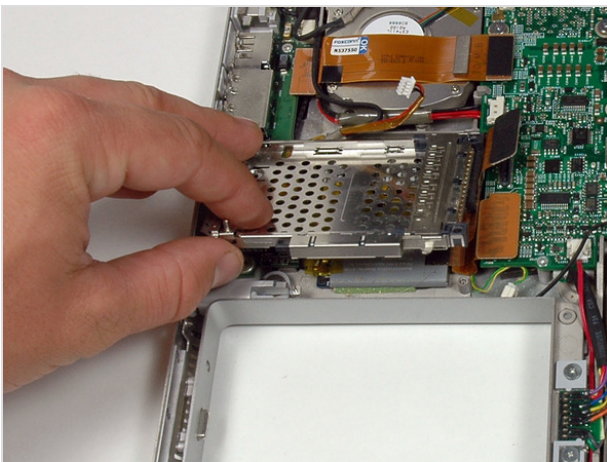
- Remove the four Phillips screws from the PC card cage.
- The two longer screws go on the right side of the card cage.





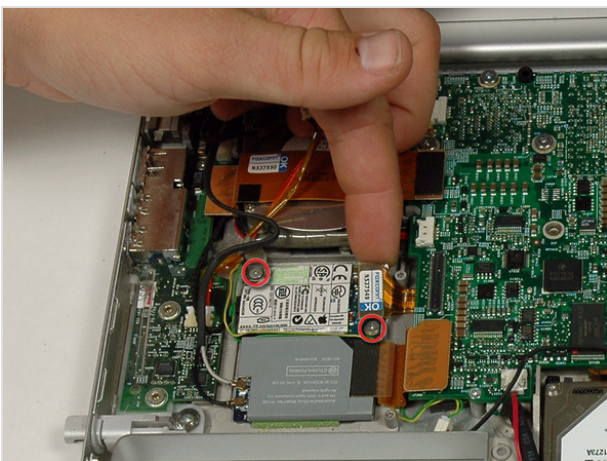
## Step 15

- Disconnect the PC card cable from the logic board.



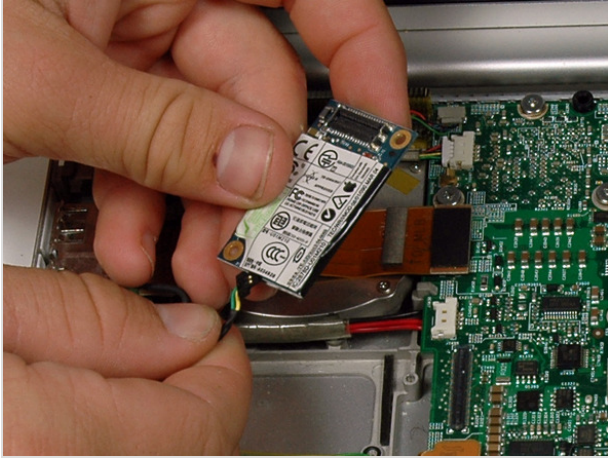
## Step 16

- Lift the PC card cage up and remove it from the computer.
- When replacing the PC card cage, make sure you attach it to the post on the metal eject button.



## Step 17 — Modem

- Remove the two Phillips screws on the corners of the modem.
- Disconnect the top modem connector from the modem. Be careful **not** to disconnect the modem connector from the logic board.



## **Step 18**

- Disconnect the modem cable from the left side of the modem and remove it from the computer.

To reassemble your device, follow these instructions in reverse order.

This document was last generated on Mar 3, 2012.