



PowerBook G4 Titanium Mercury Hard Drive Replacement

Author: iRobot

Tools used in this guide

- [Phillips #0 Screwdriver](#) (1)
- [T8 Torx Screwdriver](#) (1)

Parts relevant to this guide

- [120 GB 5400 RPM Western Digital ATA Hard Drive \(New\)](#) (1)
- [G4 Titanium Mercury Hard Drive Bracket](#) (1)

You can install hard drives up to 12.5mm thick.




Step 1 — Lower Case

- Turn the G4 over.
- Remove the eight Phillips screws from the lower case.



Step 2

- Using your thumbs, slide the lower case away from you.
- The lower case may stick in the front on a tab just above the center of the DVD drive. Be careful as you work the case off, or you may break the thin strip of plastic just above the drive. 
- Lift the lower case off.



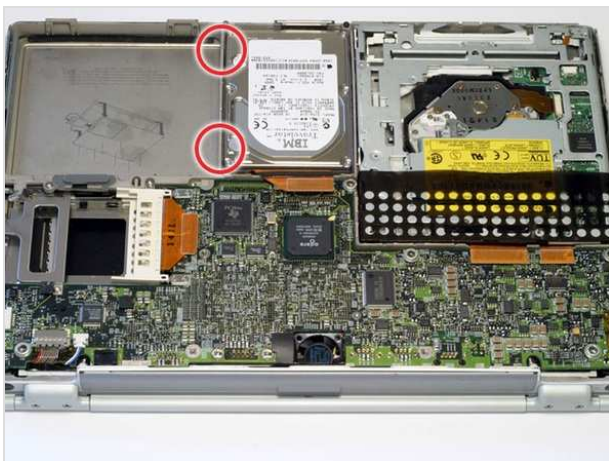
Step 3

- Your laptop should look approximately like this.



Step 4 — Hard Drive

- Disconnect the hard drive ribbon from the logic board using a spudger or the tip of your finger.



Step 5

- To free the hard drive, remove the two T8 Torx screws from the right wall of the battery housing.



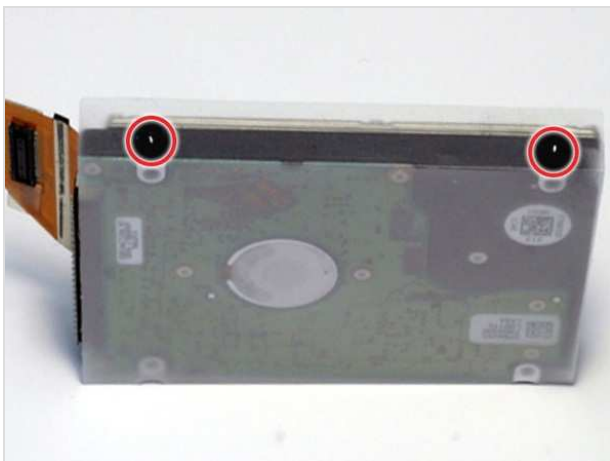
Step 6

- Remove the hard drive by gently grasping the orange ribbon cable and lifting the left edge up and out of the computer.
- There are four rubber bumpers that fit over the hard drive screws. Ensure that these bumpers come out when you remove the hard drive.



Step 7

- Your laptop should look approximately like this.



Step 8 — Hard Drive Replacement

- Remove the two black plastic bumpers and two T8 Torx screws from the side of the hard drive.



Step 9

- Grasp the orange ribbon cable and disconnect it from the hard drive. If the connector is tight, gently rock it from side to side.
- Be sure to pull evenly on both sides as uneven force may damage the hard drive pins and render your data inaccessible.
- If you are installing a new hard drive, we have an [OS X install guide](#) to get you up and running.



To reassemble your device, follow these instructions in reverse order.

This document was last generated on Feb 23, 2012.

G4 Ti Mercury Screw Guide

