



# Installing PowerBook G3 Wallstreet Processor

Author: iRobot

## Tools used in this guide

- [Anti-Static Wrist Strap](#) (1)
- [Phillips #0 Screwdriver](#) (1)
- [Spudger](#) (1)

## Parts relevant to this guide

- [G3 WallStreet 266 MHz Processor](#) (1)
- [G3 WallStreet 300 MHz Processor](#) (1)

The G3 processor is not soldered to the logic board, and installing a replacement is very easy.



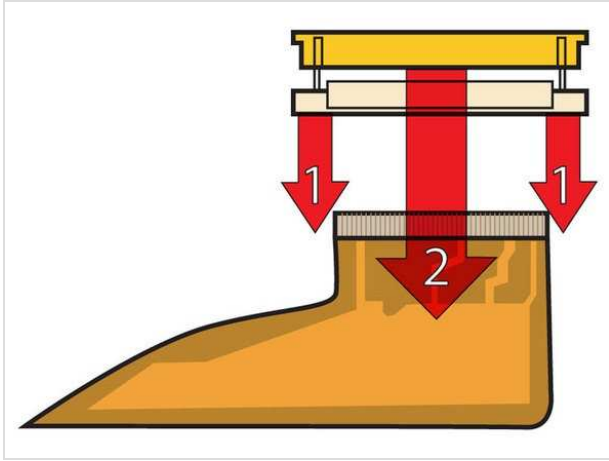
## Step 1 — Keyboard

- Remove both expansion bay modules using the levers on the front of the computer.
- Insert your index fingers inside the expansion bays and search for the two ribbed tabs on the underside of the upper case. The tabs are located near the bottom corners of the keyboard.
- Pull the tabs toward yourself and the keyboard will pop up.




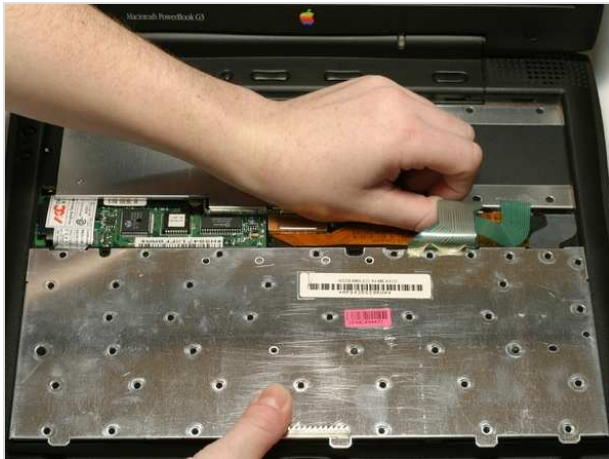
## Step 2

- Pull the keyboard forward to disengage the tabs holding it in back and rotate it toward you.
- Rest the keyboard on the trackpad.



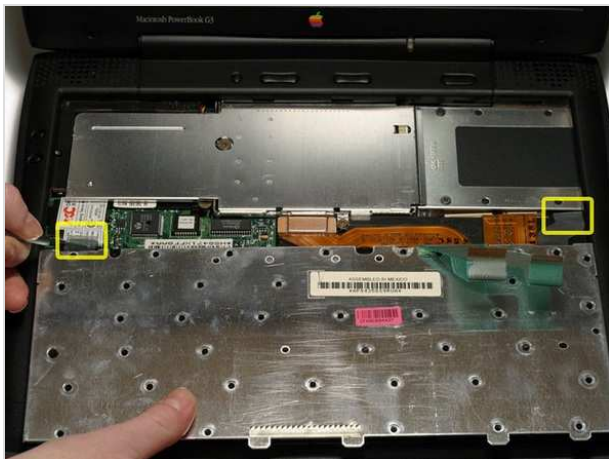
## Step 3

- This is a diagram of the ribbon clamp connectors you will disconnect in the next step. 
- 1) With your fingernails, grasp the locking bar on either side and pull up a small amount (about 1/16" or 2 mm).
- 2) After disengaging the locking bar, slide the cable out of the connector.



## Step 4

- Disconnect the two keyboard connectors by disengaging the clamps and pulling the ribbons directly upward.



## Step 5

- Slide a spudger or screwdriver downward between each plastic strain relief cable and the wall of the case in order to bow out the cable beyond the small tab holding it in place.
- Once the strain relief cables are free, lift the keyboard off.



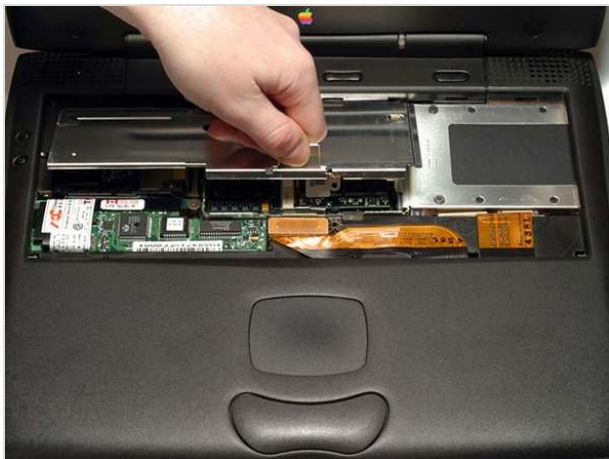
## Step 6

- Your laptop should look approximately like this.



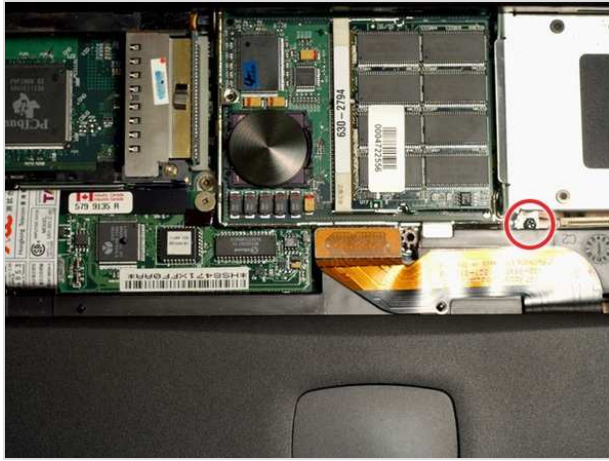
## Step 7 — Heat Shield

- Remove the two Phillips screws from the heat shield.
- One screw is shorter than the other. When putting the Wallstreet back together, this screw goes in the middle of the heat shield.



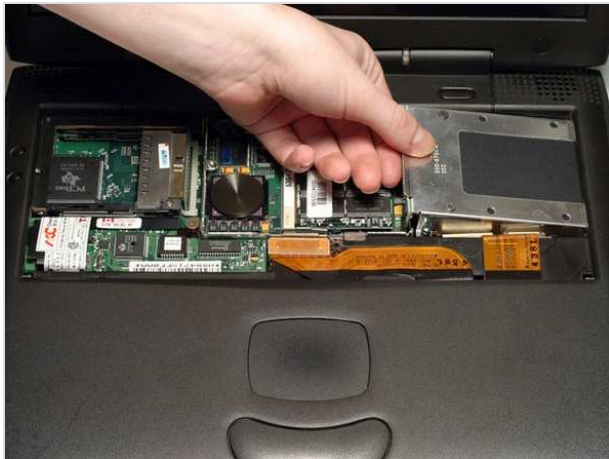
## Step 8

- Grasp the metal handle on the heat shield and pull up and toward yourself.



## Step 9 — Hard Drive

- Unscrew, but do not remove, the single Phillips screw from the hard drive bracket.



## Step 10

- Grasp the hard drive bracket on the left side and pull up and to the left.



## Step 11

- Your laptop should look approximately like this.



## Step 12 — Processor

- Use a spudger, the tips of your fingers, or a flat non-metal tool to pry up the processor's right side.
- Remove the processor by sliding it up and to the right.
- The processor and RAM can be removed as a unit. It is not necessary to remove the RAM from the processor.
- There are two tabs on the left side of the processor that fit into slots on the metal framework. Make sure these tabs are in the slots.




To reassemble your device, follow these instructions in reverse order.

This document was last generated on Feb 23, 2012.


# G3 WallStreet Screw Guide




↓



Heat Shield  
1 Phillips




Heat Shield  
1 Phillips




HD Replacement  
4 T8 Torx


↓



Modem  
1 Phillips



Display  
4 T8 Torx



Upper Case (top)  
4 T8 Torx


↙ ↘



To organize your screws, simply place each screw in the appropriate box as you remove them from your laptop.


If you are not planning on immediately reassembling your laptop, you may want to tape the screws to this paper.

Due to model variations, the screws you remove may differ slightly from this guide.



Upper Case (bottom)  
6 T8 Torx


↓



Upper Case (bottom)  
2 T8 Torx

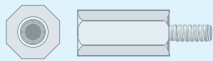


PMU  
1 T8 Torx




Power Card  
1 T8 Torx

↓



Power Card  
1 1/4 inch Standoff



PC Card Cage  
4 T6 Torx