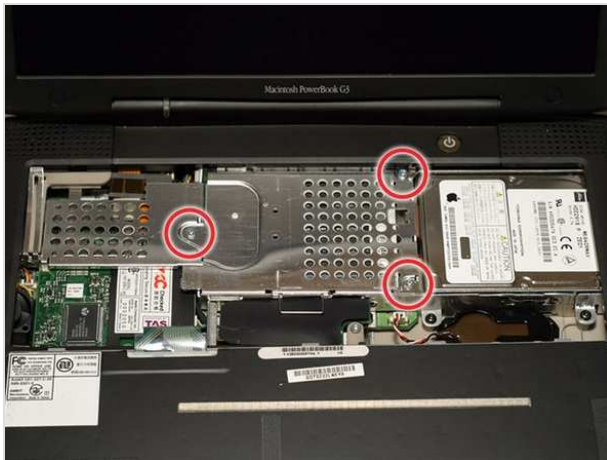






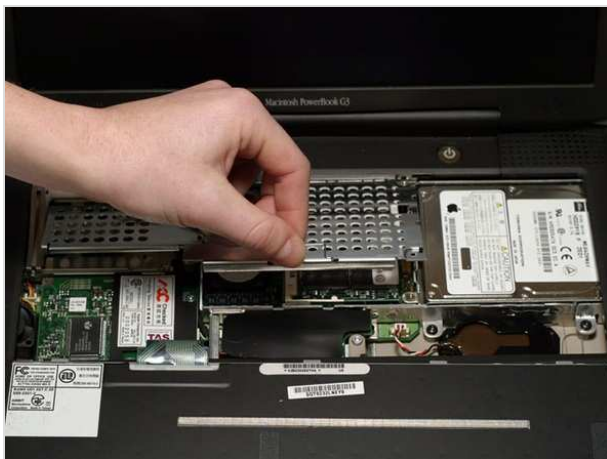
## Step 3

- Lift the keyboard out by pulling it up and away from you. Rest the keyboard, face down, on top of the trackpad.
- In order to replace the keyboard, you must first remove the modem.



## Step 4 — Heat Shield

- Remove the three silver Phillips screws that attach the heat shield to the internal metal framework.



## Step 5

- Lift the heat shield up and pull it toward you.



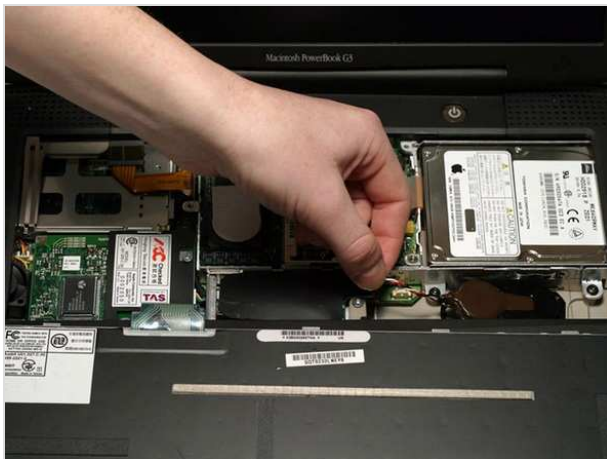
## Step 6

- Your laptop should look approximately like this.



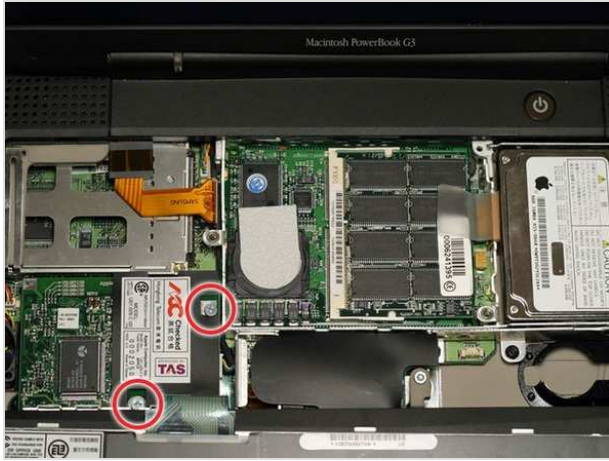
## Step 7 — PRAM Battery

- Pull the battery cable directly up from the logic board.



## Step 8

- Remove the battery from its holder by pulling up and to the left.



## Step 9 — Modem

- Remove the two silver Phillips screws from the modem.



## Step 10

- Use a spudger, the tips of your fingers, or a flat non-metal tool to get under the modem's edge and pry it up from its socket as shown in the picture.



## Step 11

- Disconnect the cable from the right side of the modem.



## Step 12

- Your laptop should look approximately like this.



## Step 13 — Processor

- Use a spudger, the tips of your fingers, or a flat non-metal tool to pry up the processor's right side.



## Step 14

- Disconnect the keyboard cable from the logic board by pulling directly up on the clear plastic loop.
- This step is out of sequence with the keyboard because in order to remove the keyboard you must first remove the modem.





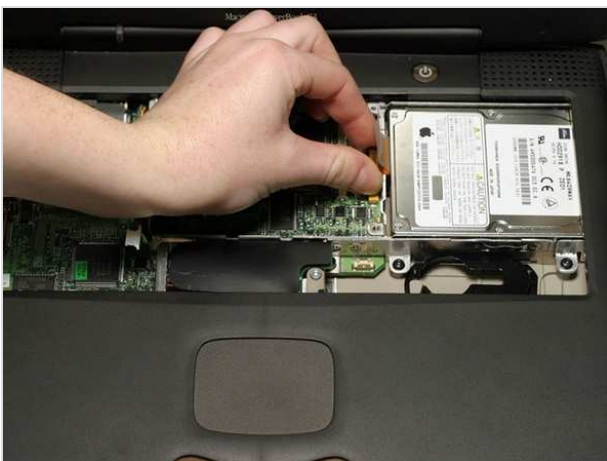
## Step 15

- Your laptop should look approximately like this.



## Step 16 — RAM

- Release the tabs on each side of the RAM chip at the same time. These tabs lock the chip in place and releasing them will cause the chip to "pop" up.
- Pull the RAM chip out.
- There are RAM slots on both sides of the processor. We recommend installing higher capacity chips on the bottom so that if you want to upgrade later, you won't have to remove the processor.



## Step 17 — Hard Drive

- Grasp the orange cable at the left end of the hard drive and disconnect it from the logic board.
- Try to grasp the cable on the plastic connector rather than on the flexible cable section.





## Step 18

- Grasp the plastic tab and pull the hard drive up and to the left, making sure that the metal bracket doesn't catch on the black plastic casing.



## Step 19 — Clutch Cover

- Push the display back so that it lies flat.



## Step 20

- Slip a spudger or your index finger under the clutch cover near the power button and pull gently upward until you feel it come free.
- Repeat the previous step on the left side.



## Step 21

- Lift the clutch cover up and off, rotating it toward yourself.



## Step 22 — Inverter

- Grasp the orange display data cable and disconnect it from the logic board.
- Pull the display cable straight up so that it is vertical.



## Step 23

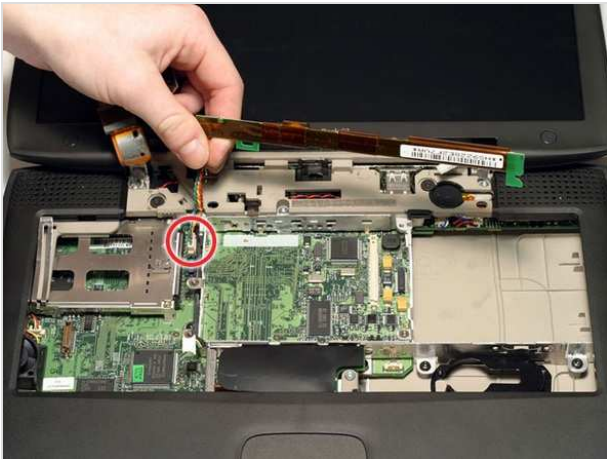
- Grasp the thin display inverter board at its left end, push the left end forward to get the board beyond the tab, and then lift the entire board up.
- There are two tabs that hold the display inverter in place that you need to get past in order to pull the board free.





## Step 24

- Disconnect the white inverter cable connector from the right end of the board.



## Step 25

- Disconnect the inverter plug, pulling directly up from the logic board.



## Step 26

- Your laptop should look approximately like this.



## Step 27 — Display

- Turn the laptop around so that its back faces you.
- Open the port door located at the back of the laptop.
- Remove the four black Torx screws.



## Step 28

- Hold the display on both sides and pull directly up until its hinges are free of their mounts.



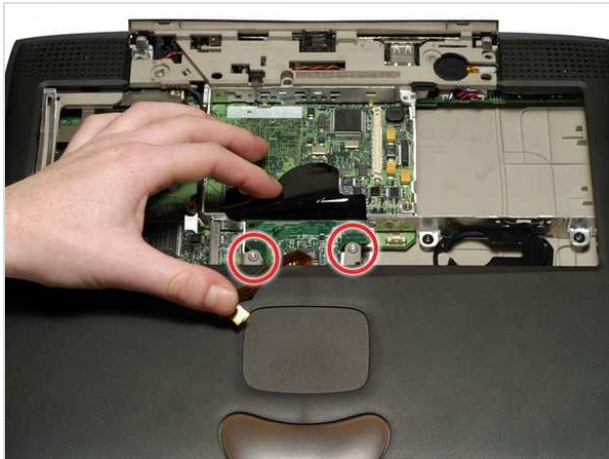
## Step 29

- Your laptop should look approximately like this.



## Step 30 — Upper Case

- Remove the three long silver and two short black Torx screws from the beige plastic casing.



## Step 31

- Turn the Lombard so that the trackpad is nearest you and slide the thin plastic shield away from you, out from under the black casing.
- Disconnect the newly revealed thin orange ribbon from the logic board, to the left of the trackpad.
- Remove the two long silver Torx screws.



## Step 32

- Turn the laptop over.
- Remove the seven Torx screws from the bottom casing.
- There are two long screws in the front left and front right corners; make sure to put these back in the proper place when reassembling.





## Step 33

- Turn the laptop back over.
- Remove the three short black Torx screws from the metal frame.
- Remove the short black Torx screw to the far left that fastens the logic board to the casing.
- There is a small black plastic spacer that goes between the bottom left screw and the logic board.



## Step 34

- Grasp the upper plastic casing where it locks into the internal frame and pull back. When the plastic tab has cleared the slot that the casing locks into, pull up enough to keep it from locking back into place.



## Step 35

- The PC card eject button on the laptop's left side prevents the upper casing from lifting up. In order to bypass the button, push it in far enough so that you can pull the upper casing's left side out and up beyond the button.



## Step 36

- Lift the left side of the case partly up so that you can access and disconnect the audio in/out cables from the sound card in the upper right of the case.
- Be careful not to lift the upper casing too far before you have disconnected the audio in/out cables or you may damage the sound card.



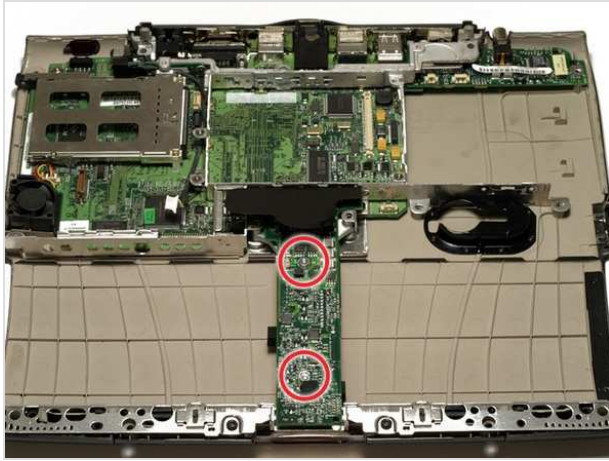
## Step 37

- Remove the upper casing. Note that there are two tabs on the laptop's front that often cause the upper case to stick.



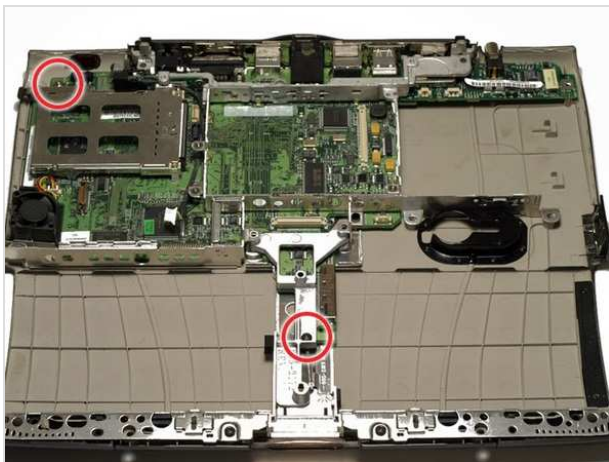
## Step 38

- Your laptop should look approximately like this.



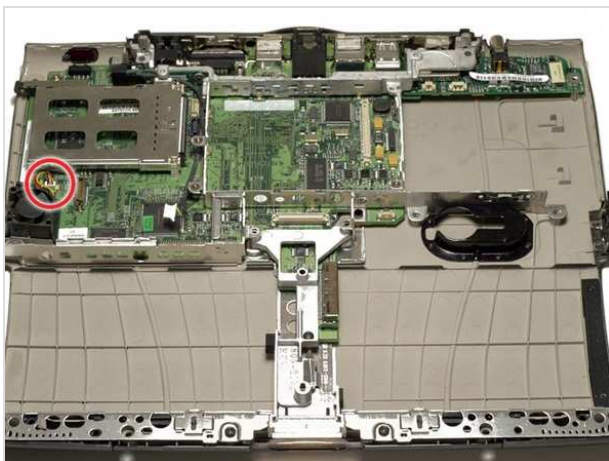
## Step 39 — Power Card

- Remove the two long silver Torx screws from the power card in the center of the laptop.
- Grasp the power card near the black plastic shield and lift up.



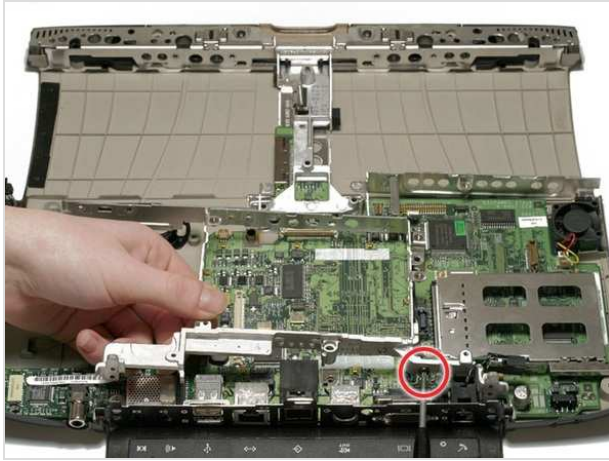
## Step 40 — Framework

- Remove the single short black Torx screw anchoring the metal framework to the lower casing.
- Use a five millimeter nut driver or needle-nose pliers to remove the small metal nut from the bolt in the laptop's back left corner.
- If you're using pliers, be extremely careful not to let them slip or you may damage the logic board.



## Step 41

- Disconnect the fan cable from the left side of the logic board.



## Step 42

- Turn the laptop so that its back is facing you.
- Lift up on the left side of the metal framework and remove the single black Torx screw.



## Step 43

- Grasp the EMI Filter by its black end and rotate it toward the front of the laptop. Pull the filter up and beyond the screw bracket.
- Remove the metal framework.



## Step 44

- Your laptop should look approximately like this.



## Step 45 — Sound Card

- Lift the sound card out by pulling up on both the right and left sides.
- If the sound card sticks, pull the black metal wall of the casing toward you while lifting the right side of the sound card up.



## Step 46 — Logic Board

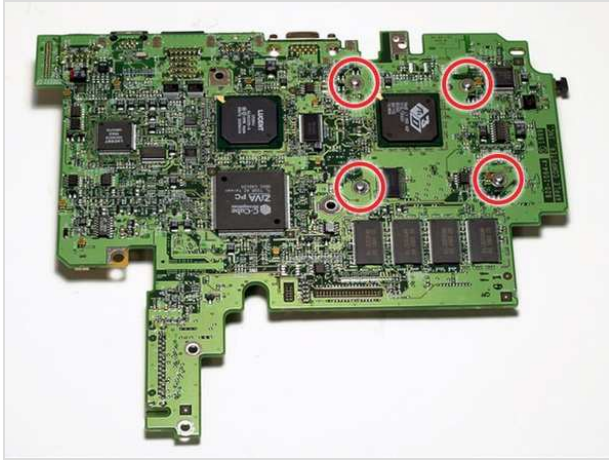
- Turn the laptop around so that the front faces you.
- Move the metal yoke to the left, making sure to leave the spring attached.



## Step 47

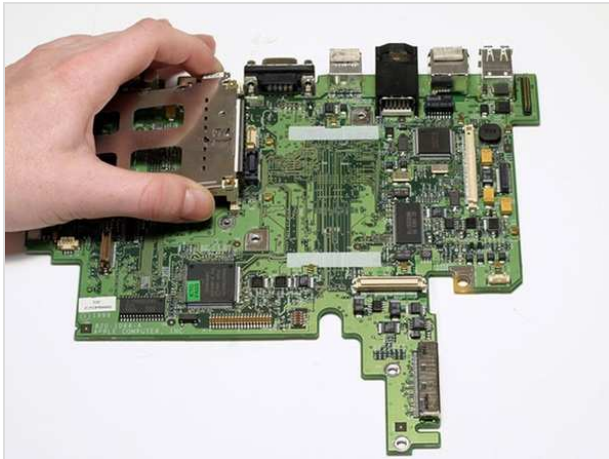
- Gently lift the front edge of the logic board and then pull it toward you.
- There are two major obstacles to avoid when removing the logic board: the first is the fan and connector cables, and the second is the bolt in the back left corner.





## Step 48 — PC Card Cage

- Turn the logic board over.
- Remove the four Phillips screws holding the PC card cage to the logic board.
- Two of the screws are short and two are longer. The two short screws go on the side closer to the PC card eject button.



## Step 49

- Turn the logic board back over.
- Clasp the PC card cage between your thumb and index finger and lift it directly upward.

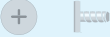
To reassemble your device, follow these instructions in reverse order.

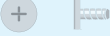
This document was last generated on Feb 23, 2012.


# G3 Lombard Screw Guide

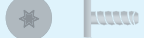



↓


  
Heat Shield  
3 Phillips

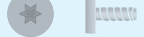
  
Modem  
2 Phillips

  
HD Replacement  
4 T8 Torx

  
Display  
4 T8 Torx

  
Upper Case (top)  
5 T8 Torx

  
Upper Case (top)  
2 T8 Torx

  
Upper Case (bottom)  
5 T8 Torx

↙ ↘





To organize your screws, simply place each screw in the appropriate box as you remove them from your laptop.

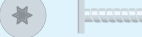
If you are not planning on immediately reassembling your laptop, you may want to tape the screws to this paper.


Due to model variations, the screws you remove may differ slightly from this guide.


↓

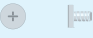
  
Upper Case (bottom)  
2 T8 Torx


  
Upper Case (top)  
4 T8 Torx

  
Power Card  
2 T8 Torx

  
Framework  
2 T8 Torx

  
Framework  
1 5mm Standoff

  
PC Card Cage  
2 Phillips

  
PC Card Cage  
2 Phillips

↓

