



# Installing MacBook Core 2 Duo AirPort Card

Author: iRobot

## Tools used in this guide

- [Coin](#) (1)
- [Phillips #00 Screwdriver](#) (1)
- [Spudger](#) (1)

## Parts relevant to this guide

- [MacBook Core 2 Duo Santa Rosa/Penryn 802.11n Airport Extreme Card](#) (1)
- [MacBook Core 2 Duo 802.11n Airport Extreme Card](#) (1)

Install an AirPort Extreme 802.11g card internally.



## Step 1 — Battery

- Use a coin to rotate the battery-locking screw 90 degrees clockwise.



## Step 2

- Lift the battery out of the computer.



## Step 3 — Memory Cover

- Unscrew the three evenly-spaced Phillips screws from along the rear wall of the battery compartment.
- The screws are captive to the metal memory cover so you cannot lose them.



## Step 4

- Rotate the L-shaped memory cover so it clears the battery compartment opening and lift it up and out of the computer.



## Step 5 — Upper Case

- Remove the following 3 screws:
  - One 11 mm Phillips#00 in the middle of the case. (Head: 5mm dia. x .75mm thick)
  - Two 14.5 mm Phillips #00 (Head: 5mm dia. x .75mm thick)
- If the screws stick in the case, you can use a magnetized screwdriver to draw them out.
- The shorter of the three screws goes in the middle.



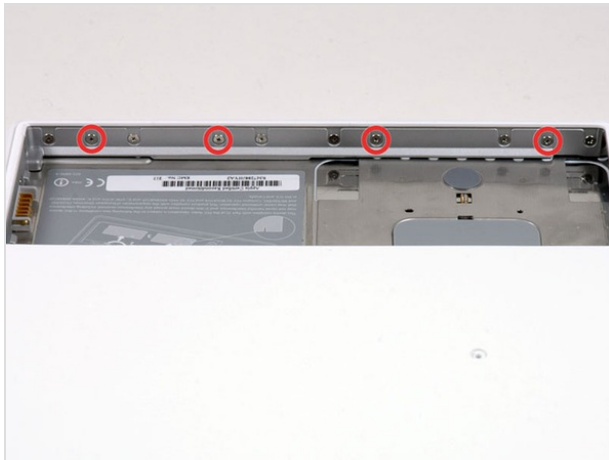
## Step 6

- Remove the following 3 screws from the rear wall of the battery compartment:
  - One 3 mm Phillips #0. (Head: 2.75 mm. dia.)
  - Two 4 mm Phillips #0 on the either side. (Head: 2.75mm dia.)
- Take extra caution with these screws as they can strip easily.



## Step 7

- Remove the two Phillips screws from either side of the right wall of the battery compartment (not the ones closest to the battery connector).
  - Two 6.25 mm Phillips #000. (Head: 4 mm. dia. x .5mm thick)



## Step 8

- Remove the four indicated Phillips screws from the front wall of the battery compartment. When working from the left, remove the 2nd, 4th, 7th and 9th screw.
  - Four 3.25 mm Phillips #000. (Head: 4 mm. dia. x 4mm thick)



## Step 9

- Remove the following 4 screws from the back of the computer:
- The longer screws go on the inside, shorter screws on the outside.
  - Two 11 mm Phillips #00, with Shank (2.2mm dia. x 2 mm len.) (Head: 3.2 mm. dia. x .5mm thick)
  - Two 7.25 mm Phillips #00, with Shank (2mm dia. x 3.75 mm len.) (Head: 3.2 mm. dia. x .5mm thick)





## Step 10

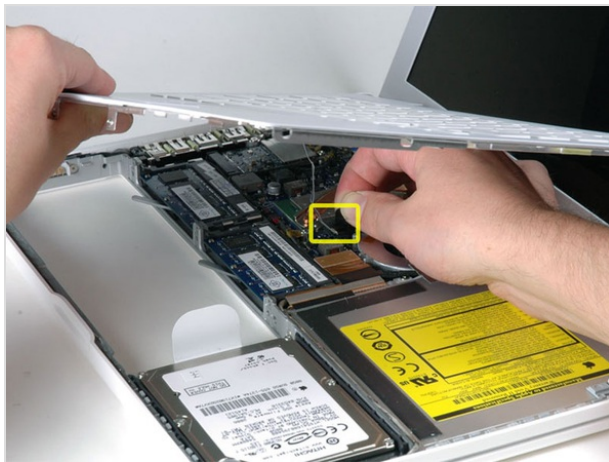
- Remove the two Phillips screws from the optical drive side of the computer.
  - Two 5.2 mm Phillips #00, with Shank (2.3mm dia. x 3.5 mm len.) (Head: 3.2 mm. dia. x .5mm thick)
- It is not necessary to remove the similar screws on the other side of the computer.








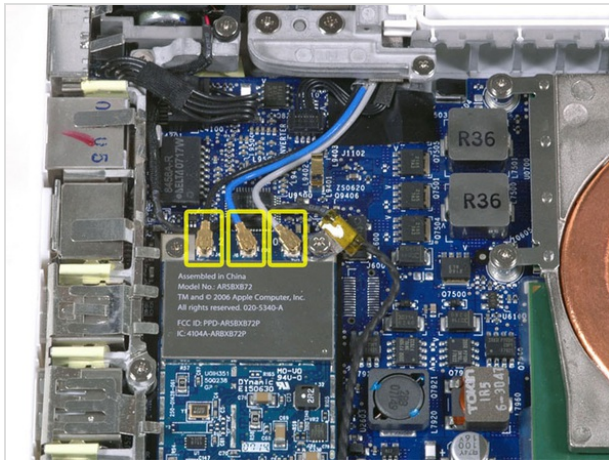
## Step 11

- There's a trackpad and keyboard ribbon connecting the upper case to the logic board, so don't pull the upper case off entirely just yet. 
- Starting near the display and working around to the front of the computer, pry up on the upper case. A [plastic opening tool](#) or a medium hard guitar pick may help you to do this.
- The upper case is likely to stick at the connection above the optical drive. If this is the case, first free all other sides, then proceed to pull upward on the upper case from either side of the optical drive opening. 



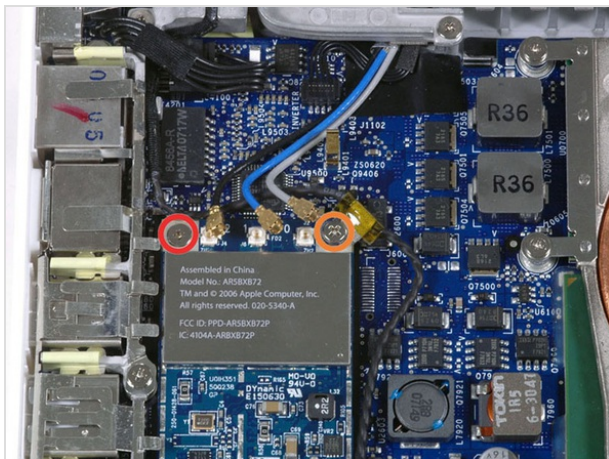
## Step 12

- While holding up the upper case, pull up the black tab of the silver cable away from its connector.
- If there is no black tab, you can also use a spudger to gently pry the connector from its housing. This connector is tall, so be sure to pry straight up. 
- If you happen to break your upper case cable when removing the upper case, we stock the [cable](#) individually and we have a [guide](#) that makes replacing it easy. 
- Upon reassembly, there are 4 grey plastic clips on the optical drive side of the keyboard. They must be installed in their slots for the keyboard to snap in properly. 



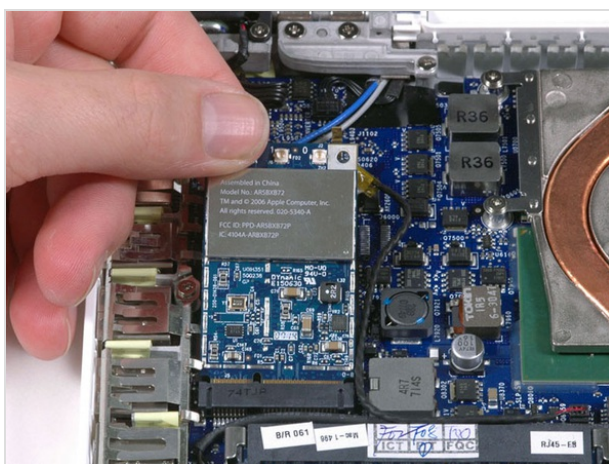
## Step 13 — AirPort Card

- Disconnect the three antenna cables from the AirPort card on the left side of the computer.
- Notice the order of the antenna cables from left to right is black, blue, and gray.
- If you have a MacBook Core 2 Duo Santa Rosa/ Penryn, there are only two antenna cables on the AirPort card.



## Step 14

- Remove the following 2 screws from the AirPort card:
  - One 3 mm Phillips from the left side.
  - One 8 mm Phillips from the right side.



## Step 15

- Grasp the AirPort card at its top and slide it toward the screen and out of the computer.

To reassemble your device, follow these instructions in reverse order.

