



Installing PowerBook G3 Lombard Display

Author: iRobot

Tools used in this guide

- [Anti-Static Wrist Strap](#) (1)
- [Phillips #0 Screwdriver](#) (1)
- [Spudger](#) (1)
- [T8 Torx Screwdriver](#) (1)

Parts relevant to this guide

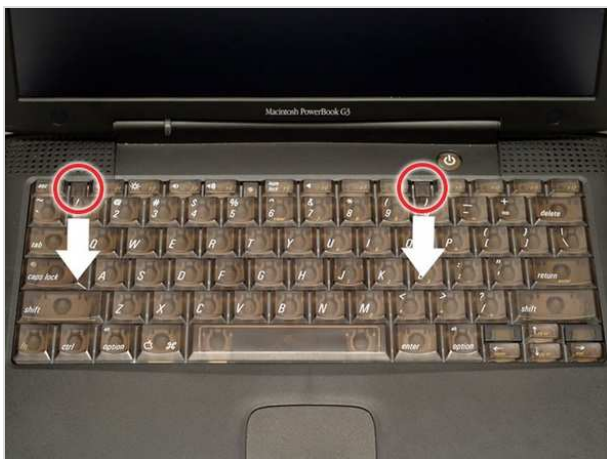
- [G3 Lombard 14.1" LCD Display](#) (1)

Change out the entire display assembly, including the hinges and plastic casing.



Step 1 — Keyboard

- Turn the computer so that the ports are facing you.
- If the keyboard is locked, open the port cover and turn the keyboard locking screw until the keyboard is unlocked.



Step 2

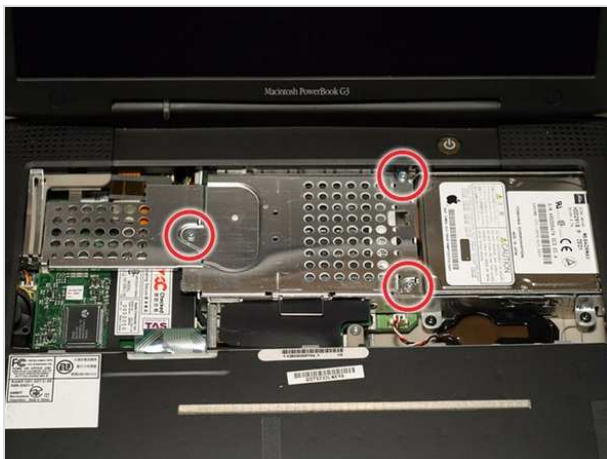
- Pull the keyboard release tabs toward you and lift up on the keyboard until it pops free.
- Make sure you have removed the laptop battery and CD/DVD module from the expansion bays before proceeding.





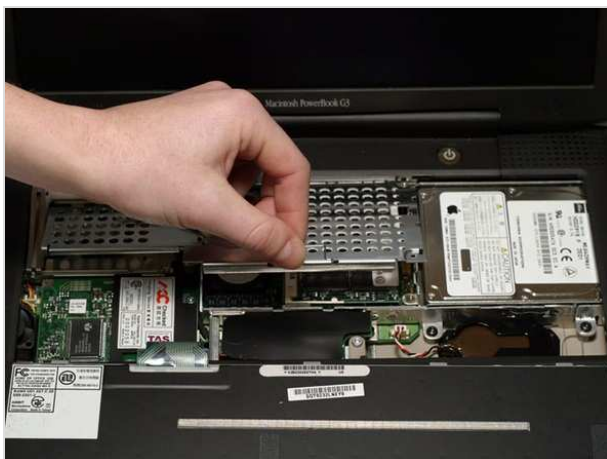
Step 3

- Lift the keyboard out by pulling it up and away from you. Rest the keyboard, face down, on top of the trackpad.
- In order to replace the keyboard, you must first remove the modem.



Step 4 — Heat Shield

- Remove the three silver Phillips screws that attach the heat shield to the internal metal framework.



Step 5

- Lift the heat shield up and pull it toward you.



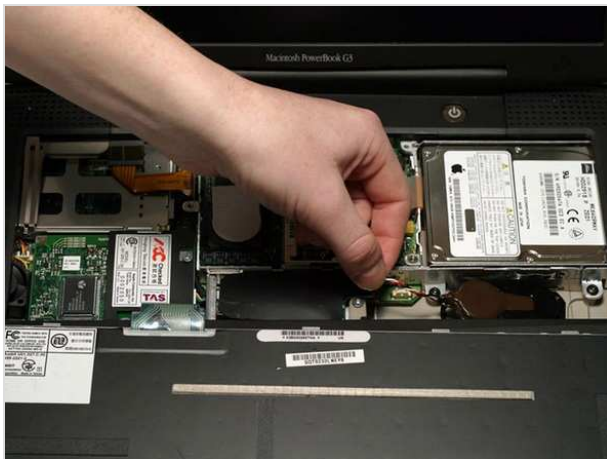
Step 6

- Your laptop should look approximately like this.



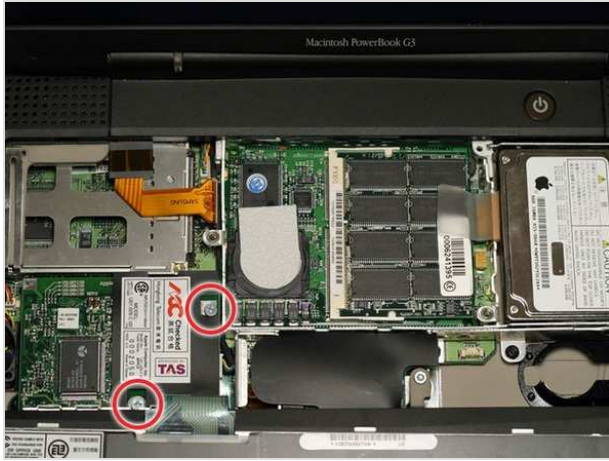
Step 7 — PRAM Battery

- Pull the battery cable directly up from the logic board.



Step 8

- Remove the battery from its holder by pulling up and to the left.



Step 9 — Modem

- Remove the two silver Phillips screws from the modem.



Step 10

- Use a spudger, the tips of your fingers, or a flat non-metal tool to get under the modem's edge and pry it up from its socket as shown in the picture.



Step 11

- Disconnect the cable from the right side of the modem.



Step 12

- Your laptop should look approximately like this.



Step 13 — Processor

- Use a spudger, the tips of your fingers, or a flat non-metal tool to pry up the processor's right side.



Step 14

- Disconnect the keyboard cable from the logic board by pulling directly up on the clear plastic loop.
- This step is out of sequence with the keyboard because in order to remove the keyboard you must first remove the modem.





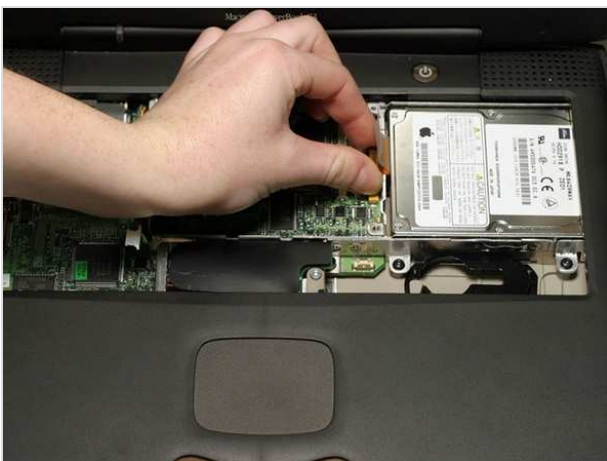
Step 15

- Your laptop should look approximately like this.



Step 16 — RAM

- Release the tabs on each side of the RAM chip at the same time. These tabs lock the chip in place and releasing them will cause the chip to "pop" up.
- Pull the RAM chip out.
- There are RAM slots on both sides of the processor. We recommend installing higher capacity chips on the bottom so that if you want to upgrade later, you won't have to remove the processor.



Step 17 — Hard Drive

- Grasp the orange cable at the left end of the hard drive and disconnect it from the logic board.
- Try to grasp the cable on the plastic connector rather than on the flexible cable section.





Step 18

- Grasp the plastic tab and pull the hard drive up and to the left, making sure that the metal bracket doesn't catch on the black plastic casing.



Step 19 — Clutch Cover

- Push the display back so that it lies flat.



Step 20

- Slip a spudger or your index finger under the clutch cover near the power button and pull gently upward until you feel it come free.
- Repeat the previous step on the left side.



Step 21

- Lift the clutch cover up and off, rotating it toward yourself.



Step 22 — Inverter

- Grasp the orange display data cable and disconnect it from the logic board.
- Pull the display cable straight up so that it is vertical.



Step 23

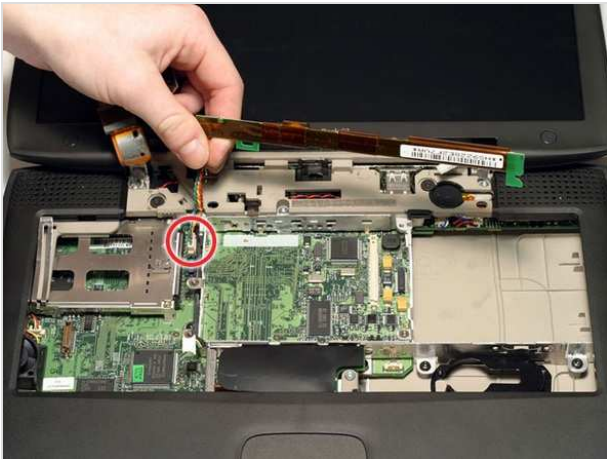
- Grasp the thin display inverter board at its left end, push the left end forward to get the board beyond the tab, and then lift the entire board up.
- There are two tabs that hold the display inverter in place that you need to get past in order to pull the board free.





Step 24

- Disconnect the white inverter cable connector from the right end of the board.



Step 25

- Disconnect the inverter plug, pulling directly up from the logic board.



Step 26

- Your laptop should look approximately like this.

G3 Lombard Screw Guide



↓

Heat Shield
3 Phillips

Modem
2 Phillips

HD Replacement
4 T8 Torx

Display
4 T8 Torx

Upper Case (top)
5 T8 Torx

Upper Case (top)
2 T8 Torx

Upper Case (bottom)
5 T8 Torx

↙ ↘



To organize your screws, simply place each screw in the appropriate box as you remove them from your laptop.

If you are not planning on immediately reassembling your laptop, you may want to tape the screws to this paper.

Due to model variations, the screws you remove may differ slightly from this guide.

↓

Upper Case (bottom)
2 T8 Torx

Upper Case (top)
4 T8 Torx

Power Card
2 T8 Torx

Framework
2 T8 Torx

Framework
1 5mm Standoff

PC Card Cage
2 Phillips

PC Card Cage
2 Phillips

↓