



# Installing PowerBook G3 Lombard Processor

Author: iRobot

## Tools used in this guide

- [Anti-Static Wrist Strap](#) (1)
- [Phillips #0 Screwdriver](#) (1)
- [Spudger](#) (1)

## Parts relevant to this guide

- [G3 Lombard 333 MHz Processor](#) (1)
- [G3 Lombard 400 MHz Processor](#) (1)

This processor board also includes L2 cache. It is not soldered to the logic board, so installing a replacement is very easy.



## Step 1 — Keyboard

- Turn the computer so that the ports are facing you.
- If the keyboard is locked, open the port cover and turn the keyboard locking screw until the keyboard is unlocked.



## Step 2

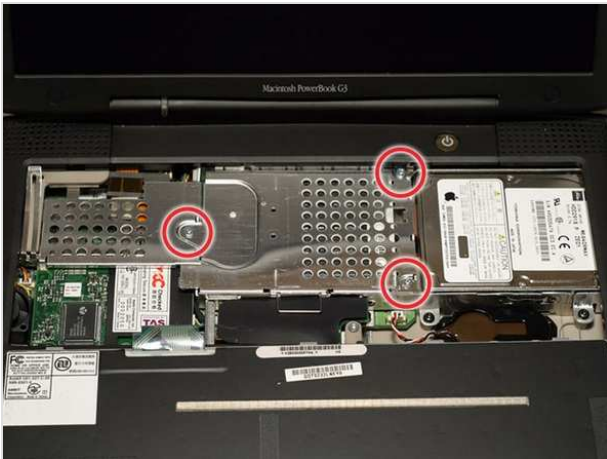
- Pull the keyboard release tabs toward you and lift up on the keyboard until it pops free.
- Make sure you have removed the laptop battery and CD/DVD module from the expansion bays before proceeding.





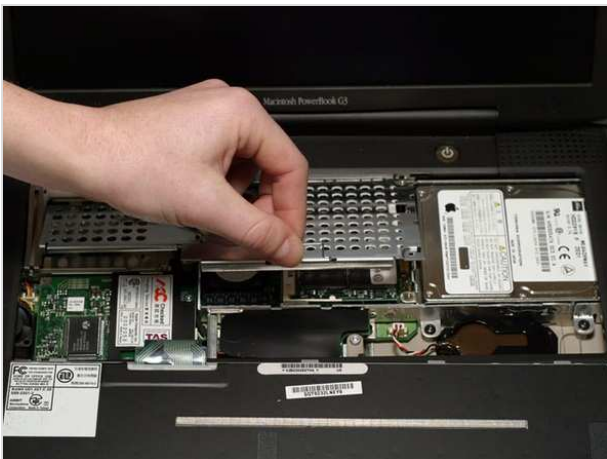
## Step 3

- Lift the keyboard out by pulling it up and away from you. Rest the keyboard, face down, on top of the trackpad.
- In order to replace the keyboard, you must first remove the modem.



## Step 4 — Heat Shield

- Remove the three silver Phillips screws that attach the heat shield to the internal metal framework.



## Step 5

- Lift the heat shield up and pull it toward you.



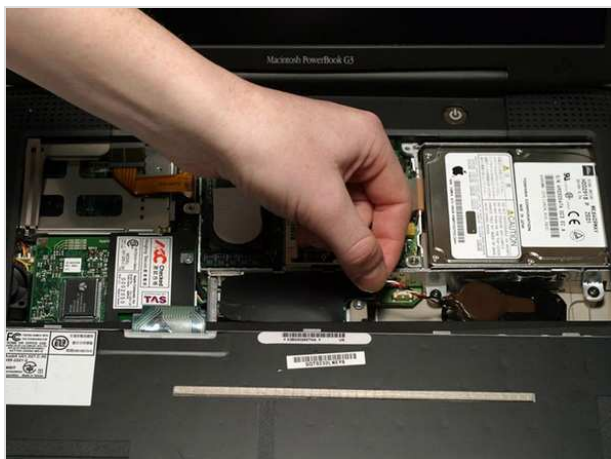
## Step 6

- Your laptop should look approximately like this.



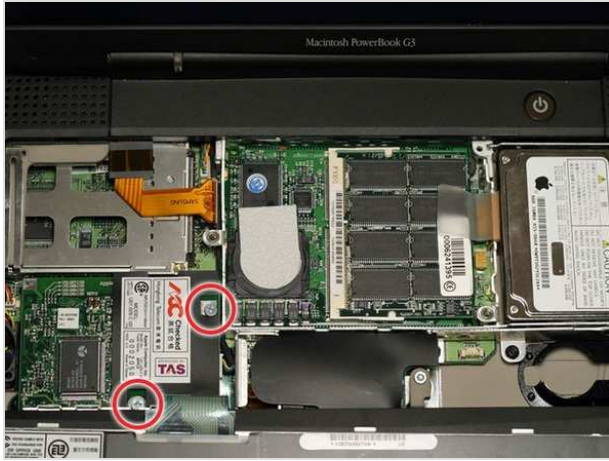
## Step 7 — PRAM Battery

- Pull the battery cable directly up from the logic board.



## Step 8

- Remove the battery from its holder by pulling up and to the left.



## Step 9 — Modem

- Remove the two silver Phillips screws from the modem.



## Step 10

- Use a spudger, the tips of your fingers, or a flat non-metal tool to get under the modem's edge and pry it up from its socket as shown in the picture.



## Step 11

- Disconnect the cable from the right side of the modem.



## Step 12

- Your laptop should look approximately like this.



## Step 13 — Processor

- Use a spudger, the tips of your fingers, or a flat non-metal tool to pry up the processor's right side.



## Step 14

- Disconnect the keyboard cable from the logic board by pulling directly up on the clear plastic loop.
- This step is out of sequence with the keyboard because in order to remove the keyboard you must first remove the modem.





## Step 15


- Your laptop should look approximately like this.


To reassemble your device, follow these instructions in reverse order.


This document was last generated on Feb 23, 2012.


# G3 Lombard Screw Guide





  
Heat Shield  
3 Phillips


  
Modem  
2 Phillips

  
HD Replacement  
4 T8 Torx

  
Display  
4 T8 Torx

  
Upper Case (top)  
5 T8 Torx

  
Upper Case (top)  
2 T8 Torx


  
Upper Case (bottom)  
5 T8 Torx





To organize your screws, simply place each screw in the appropriate box as you remove them from your laptop.


If you are not planning on immediately reassembling your laptop, you may want to tape the screws to this paper.


Due to model variations, the screws you remove may differ slightly from this guide.

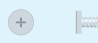
  
Upper Case (bottom)  
2 T8 Torx


  
Upper Case (top)  
4 T8 Torx

  
Power Card  
2 T8 Torx

  
Framework  
2 T8 Torx

  
Framework  
1 5mm Standoff

  
PC Card Cage  
2 Phillips

  
PC Card Cage  
2 Phillips

