



Installing PowerBook G3 Lombard PRAM Battery

Author: iRobot

Tools used in this guide

- [Phillips #0 Screwdriver](#) (1)

Parts relevant to this guide

- [G3 Lombard or Pismo PRAM Battery \(New\)](#) (1)

The time and date, as well as other settings, are kept by the PRAM battery when your machine is off.



Step 1 — Keyboard

- Turn the computer so that the ports are facing you.
- If the keyboard is locked, open the port cover and turn the keyboard locking screw until the keyboard is unlocked.



Step 2

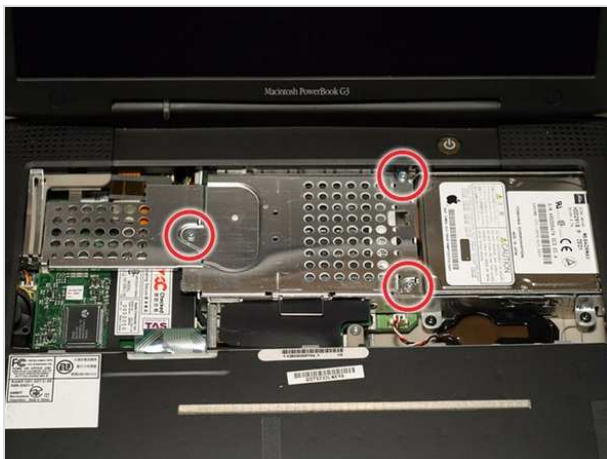
- Pull the keyboard release tabs toward you and lift up on the keyboard until it pops free.
- Make sure you have removed the laptop battery and CD/DVD module from the expansion bays before proceeding.





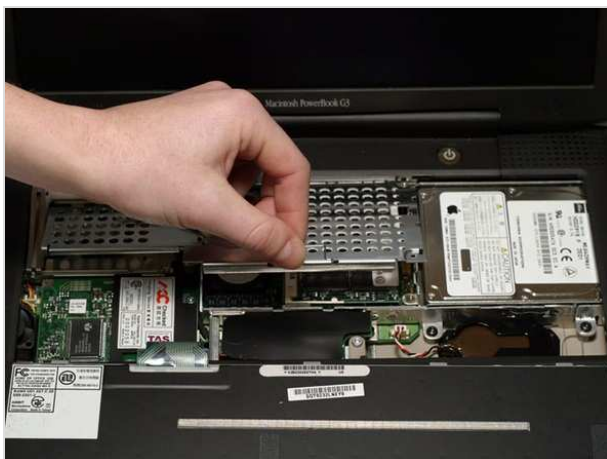
Step 3

- Lift the keyboard out by pulling it up and away from you. Rest the keyboard, face down, on top of the trackpad.
- In order to replace the keyboard, you must first remove the modem.



Step 4 — Heat Shield

- Remove the three silver Phillips screws that attach the heat shield to the internal metal framework.



Step 5

- Lift the heat shield up and pull it toward you.



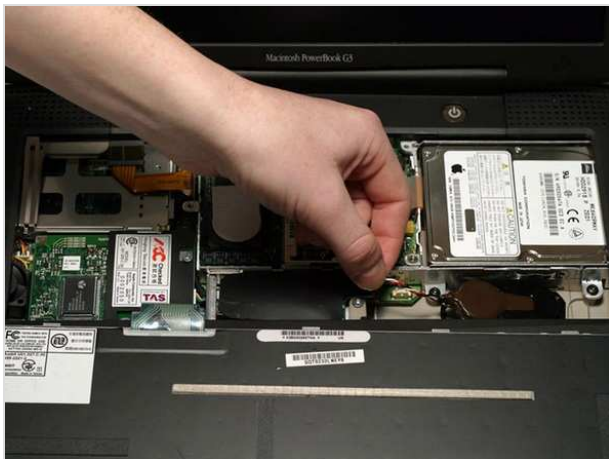
Step 6

- Your laptop should look approximately like this.



Step 7 — PRAM Battery

- Pull the battery cable directly up from the logic board.



Step 8

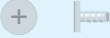
- Remove the battery from its holder by pulling up and to the left.

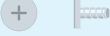
To reassemble your device, follow these instructions in reverse order.


This document was last generated on Feb 23, 2012.


G3 Lombard Screw Guide






Heat Shield
3 Phillips



Modem
2 Phillips


HD Replacement
4 T8 Torx


Display
4 T8 Torx


Upper Case (top)
5 T8 Torx


Upper Case (top)
2 T8 Torx



Upper Case (bottom)
5 T8 Torx

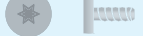



To organize your screws, simply place each screw in the appropriate box as you remove them from your laptop.

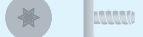
If you are not planning on immediately reassembling your laptop, you may want to tape the screws to this paper.


Due to model variations, the screws you remove may differ slightly from this guide.

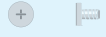

Upper Case (bottom)
2 T8 Torx



Upper Case (top)
4 T8 Torx


Power Card
2 T8 Torx


Framework
2 T8 Torx


Framework
1 5mm Standoff


PC Card Cage
2 Phillips


PC Card Cage
2 Phillips

