



# Installing iPod Nano 2nd Generation Bottom Bezel Bracket

Author: iRobot

## Tools used in this guide

- [Metal Spudger](#) (1)
- [Phillips #00 Screwdriver](#) (1)
- [Plastic Opening Tools](#) (1)

## Parts relevant to this guide

- [iPod Nano Gen 2 Bottom Bezel Bracket](#) (1)

The metal bracket within your iPod.



## Step 1 — Bottom Bezel

- Before opening your iPod, ensure that the hold switch is in the locked position.



## Step 2

- When removing the the bottom bezel, be sure not to bend the plastic surrounding the dock connector.
- Carefully insert an iPod opening tool in the seam between the metal casing and white plastic bezel
- Lift the bottom bezel off the iPod. It's glued on using a mild adhesive, so some force may be required.





## Step 3 — Bottom Bezel Bracket

- Remove the following two screws:
  - One #00 Phillips screw with a large head near the headphone jack.
  - One #00 Phillips screw with a smaller head near the side of the iPod. This screw strips easily, so be sure to press down firmly on the screwdriver.



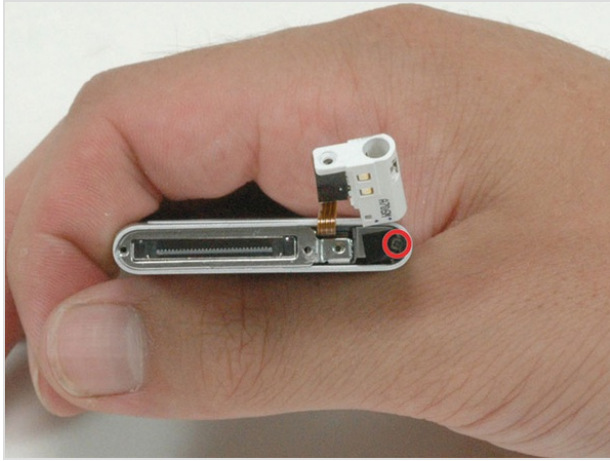
## Step 4

- Use a metal spudger to carefully pry the headphone jack out of the casing. DO NOT remove the headphone jack from the iPod entirely, as it is connected via a fragile ribbon connector to the click wheel.



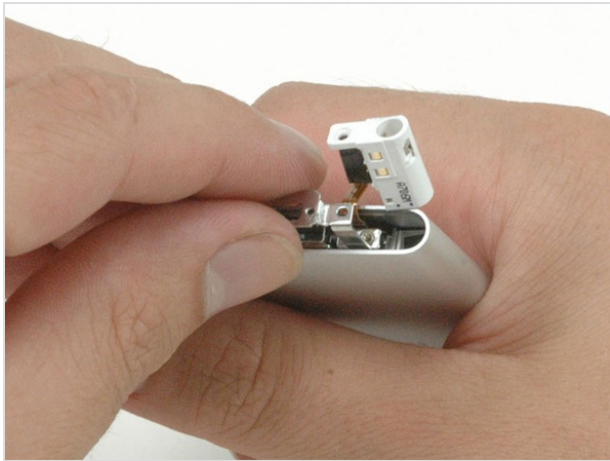
## Step 5

- Slide the headphone jack out until the white plastic housing is no longer held in place by the metal casing.



### **Step 6**

- Remove the newly-revealed Phillips #00 screw from beneath the headphone jack.



### **Step 7**

- Lift the bottom bezel bracket out of the iPod.

To reassemble your device, follow these instructions in reverse order.

This document was last generated on Feb 28, 2012.