



Installing iPod Mini Click Wheel

Author: iRobot

Tools used in this guide

- [Small Flathead Screwdriver](#) (1)
- [Spudger](#) (1)

Parts relevant to this guide

- [iPod Mini Gen 1 Click Wheel](#) (1)

The click wheel receives the feedback of your fingers and transmits it to the logic board.



Step 1 — Bottom Bezel

- Carefully insert a small flathead screwdriver in the seam between the metal casing and white plastic bottom. Use the screwdriver to pry up the white plastic bottom bezel. Be careful not to damage the soft plastic with your screwdriver.



Step 2

- A small pair of snap ring pliers is the easiest tool to remove the metal retaining bracket.
- You can also use a flathead screwdriver to pry out the metal retaining bracket beneath the bottom bezel as shown. You can free the bracket by first pushing in the metal arms on the corners and then lifting the bracket.



Step 3

- Lift the metal retaining bracket out of the iPod.



Step 4 — Click Wheel

- Use a spudger or the tip of your finger to carefully disconnect the orange click wheel ribbon from the logic board.



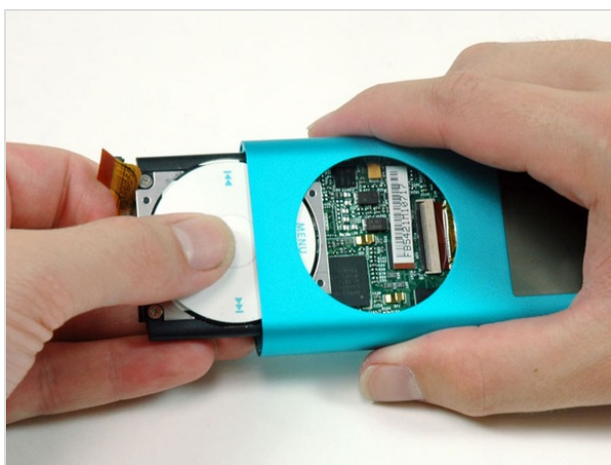
Step 5

- Use a spudger to pull back on the small black plastic tab holding the click wheel in place.



Step 6

- Continue to pull back on the black plastic tab, use your other hand to press down on the click wheel, and begin to slide it out of the iPod.
- It's important to press down on the click wheel as you slide it out. Otherwise, the click wheel could be scratched by the iPod's metal casing. To prevent the click wheel from getting scratched during removal/installation, you can place some blue painter's masking tape over the click wheel. It can be easily removed with no residue after all is finished.



Step 7

- Continue to slide the click wheel out until it is free from the iPod.

To reassemble your device, follow these instructions in reverse order.