



# Installing iPod 4th Generation or Photo Front Panel

Author: iRobot

## Tools used in this guide

- [Plastic Opening Tools](#) (1)
- [Spudger](#) (1)
- [T6 Torx Screwdriver](#) (1)

## Parts relevant to this guide

- [iPod 4G Front Panel](#) (1)

The plastic front half of your iPod case.




## Step 1 — Rear Panel

- Before opening your iPod, ensure that the hold switch is in the locked position. The orange bar should be visible, indicating hold is active.





## Step 2

- Opening the iPod can be challenging. Don't get discouraged if it takes you a few tries before the iPod is opened. 
- Insert a large iPod opening tool into the seam between the plastic front and metal rear panel of the iPod, near the headphone jack. The tool's edge should point towards the metal rear panel to prevent any accidental scratching of the plastic front.
- Run the tool along the top seam toward the upper left corner of the iPod. Press the tool into the corner, creating a small gap on the side of the case.





## Step 3

- Push the large iPod opening tool into the upper left corner of the iPod, creating a small gap along the side seam.



## Step 4

- There are five retaining tabs on each side of the iPod. 
- With the large iPod opening tool still inserted in the top seam, press a small iPod opening tool into the gap you just created.
- Run the iPod opening tool down the side seam, releasing all five tabs.
- It may be necessary to wiggle the tool while working your way down the seam to free all the tabs. 



## Step 5

- Run the iPod opening tool around the lower left corner of the iPod and along the bottom seam to free the two retaining clips near the dock connector.




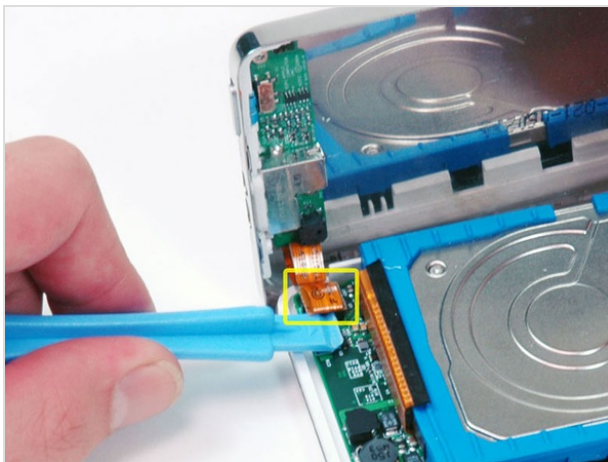
## Step 6

- Run the iPod opening tool around the lower right corner and slide it down the right side seam to free the five tabs holding the iPod together. You may be able to free the tabs by gently wiggling the front panel of the iPod.



## Step 7

- The iPod case is now open, but don't separate the two halves just yet. There is still an orange ribbon cable connecting the headphone jack to the logic board. 
- Open the case like a book with the dock connector edge at the top, and lay the rear panel next to the front half of the iPod.




## Step 8

- Use a plastic tool or your fingernails to carefully disconnect the orange headphone jack cable. Be sure to pull straight up on the connector, not the cable itself.



## Step 9 — Hard Drive

- Grasp the hard drive with one hand and carefully disconnect the orange ribbon cable from the hard drive using your other hand.
- If the cable doesn't come free easily, it may be helpful to gently wiggle the cable from side to side. 



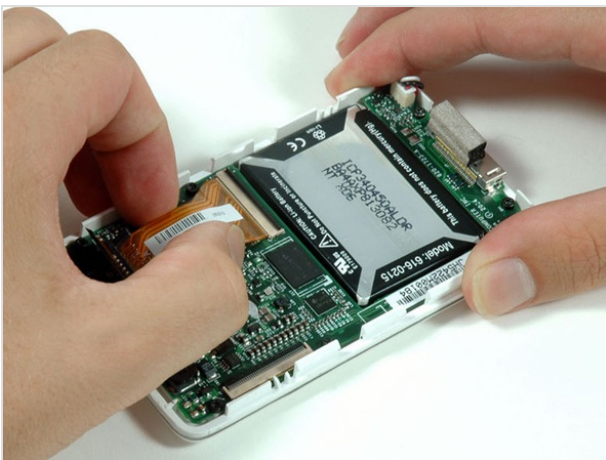
## Step 10 — Hard Drive Cable

- Peel up the black adhesive strip covering the hard drive ribbon cable.



## Step 11

- Use the tip of your finger or a spudger to carefully flip up the black connector securing the hard drive cable to the logic board. Note that the black retaining clip flips 90 degrees toward vertical, in the direction of the cable.



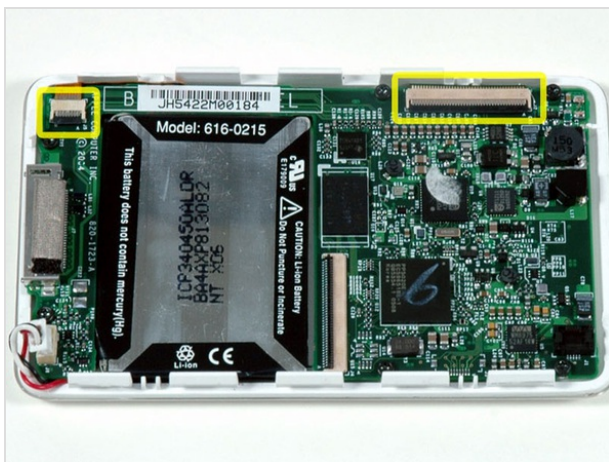
## Step 12

- Pull the orange hard drive cable directly out of its connector.



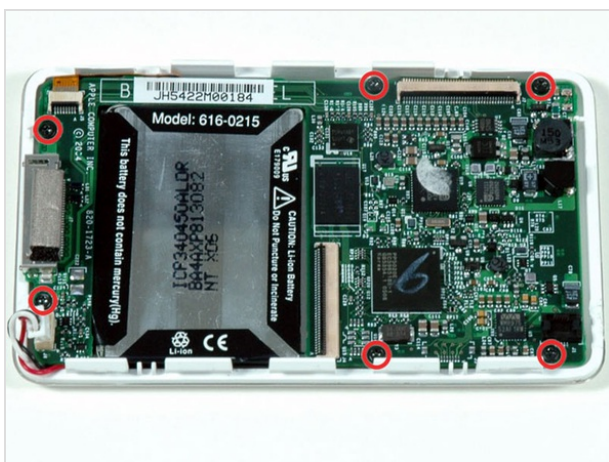
## Step 13 — Logic Board

- Carefully disconnect the white battery connector from the logic board. Be sure to pull only on the connector itself and not on the cables.



## Step 14

- Use a spudger to flip up the black retaining bars securing the display and click wheel connectors to the logic board.
- If you have an iPod Photo, the display connector (to the right of the picture) is located more centrally on the logic board.



## Step 15

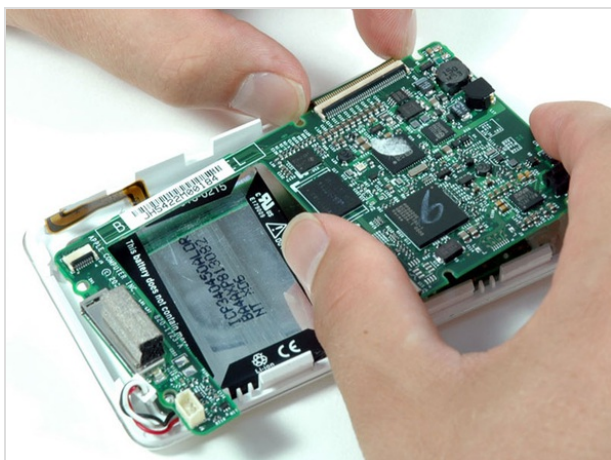
- Remove the 6 black T6 Torx screws securing the logic board to the front panel.
- If you have an iPod Photo, there will only be 5 screws, as there is no screw in the top right corner of the iPod.





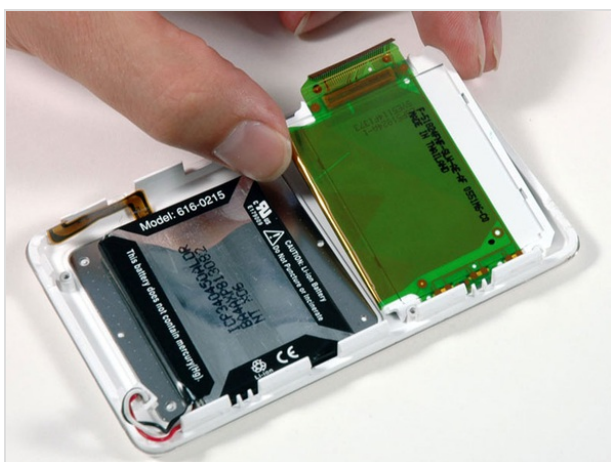
## Step 16

- Slide the orange click wheel ribbon cable out of its connector. You must unlock this connector before sliding the ribbon cable out. The locking mechanism is on the opposite side of where the cable is inserted - it swivels upwards 90 degrees. Use a plastic spudger to lift the locking mechanism.



## Step 17

- Carefully lift up the large end of the logic board and disconnect the display connector.
- Lift the logic board out of the iPod.



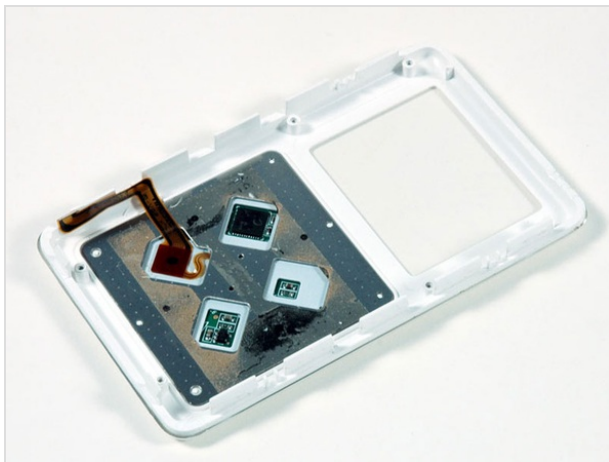
## Step 18 — Display

- Lift the display panel out of the iPod. There may be some mild adhesive connecting the display to the front panel.



## ***Step 19 — Front Panel***

- Use a spudger to pry the battery off the front panel.
- Lift the battery up and out of the iPod.



## ***Step 20***

- Front panel remains.

To reassemble your device, follow these instructions in reverse order.

This document was last generated on Mar 27, 2012.