



Installing MacBook Pro 17" Models A1151 A1212 A1229 and A1261 PRAM Battery

Author: iRobot

Tools used in this guide

- [Phillips #00 Screwdriver](#) (1)
- [Spudger](#) (1)
- [T6 Torx Screwdriver](#) (1)

Parts relevant to this guide

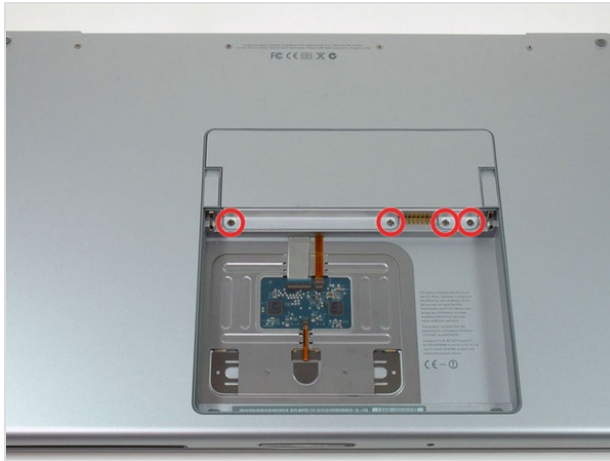
- [MacBook Pro 17" \(Model A1151\) PRAM Battery](#) (1)
- [MacBook Pro 17" \(Models A1212/A1229\) PRAM Battery](#) (1)
- [MacBook Pro 17" \(Model A1261\) PRAM Battery](#) (1)

The time and date, as well as other settings, are kept by the PRAM battery when your machine is off.



Step 1 — Battery

- Use your fingers to push both battery release tabs away from the battery and lift the battery out of the computer.



Step 2 — RAM Shield

- Remove the four identical Phillips screws from the memory door.



Step 3

- Lift the memory door up enough to get a grip on it, and slide it toward you, pulling it away from the casing.



Step 4 — Upper Case

- Remove the three Phillips screws in the battery compartment near the latch. Apple was nice enough to tilt these screws at a slight angle to make them easier to remove.



Step 5

- Remove the following six screws:
 - Two T6 Torx screws on either side of the RAM slot.
 - Four Phillips screws along the hinge.



Step 6

- Remove the four Phillips screws on the port side of the computer.



Step 7

- Rotate the computer 90 degrees and remove the two Phillips screws from the rear of the computer.




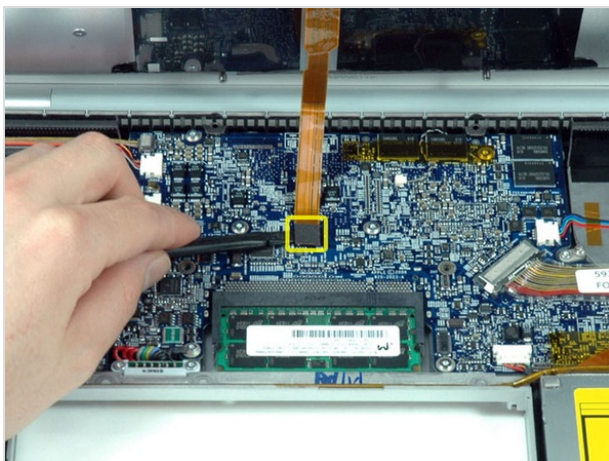
Step 8

- Rotate the computer 90 degrees again and remove the four Phillips screws from the side of the computer.



Step 9

- Do not yank the upper case off quickly. The case is attached to the logic board via a ribbon cable. 
- Lift up the back of the case and work your fingers along the sides, freeing the case as you go. Once you have freed the sides, you may need to rock the case up and down to free the front of the upper case.



Step 10

- Disconnect the trackpad and keyboard ribbon cable from the logic board.
- Remove the upper case.



Step 11 — Optical Drive

- Disconnect the orange SuperDrive ribbon cable from the logic board, removing tape as necessary.



Step 12

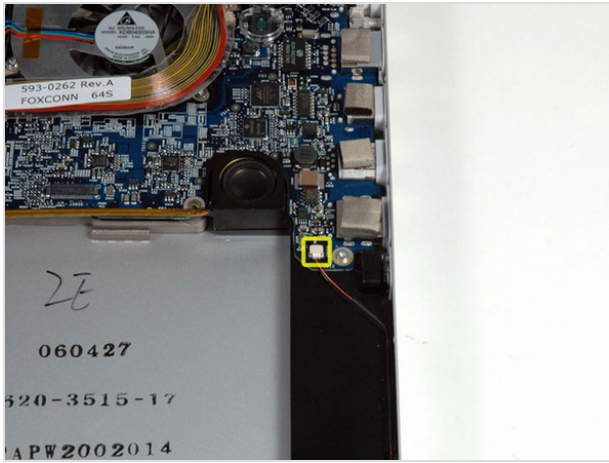
- Remove the following three screws:
 - Two black T6 Torx screws on either side of the SuperDrive.
 - One longer silver T6 Torx screw at the back of the drive near the speaker.



Step 13

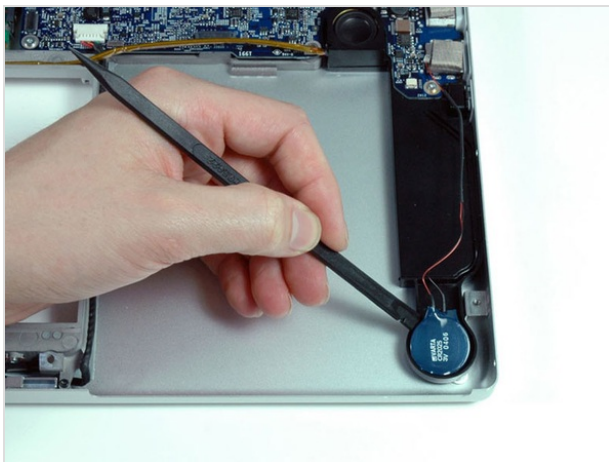
- Use one hand to pull back the speaker cable and use your other hand to lift the optical drive up and out of the computer.
- If you have a CD or any other object jammed in your optical drive, we have an [optical drive repair guide](#).





Step 14 — PRAM Battery

- Disconnect the PRAM battery cable from the bottom right corner of the logic board.



Step 15

- Use a spudger to pry up the PRAM battery from its housing on the left speaker assembly.

To reassemble your device, follow these instructions in reverse order.

This document was last generated on Feb 23, 2012.