



# Installing MacBook Pro 17" Models A1151 A1212 A1229 and A1261 RAM Shield

Author: iRobot

## Tools used in this guide

- [Phillips #00 Screwdriver](#) (1)

## Parts relevant to this guide

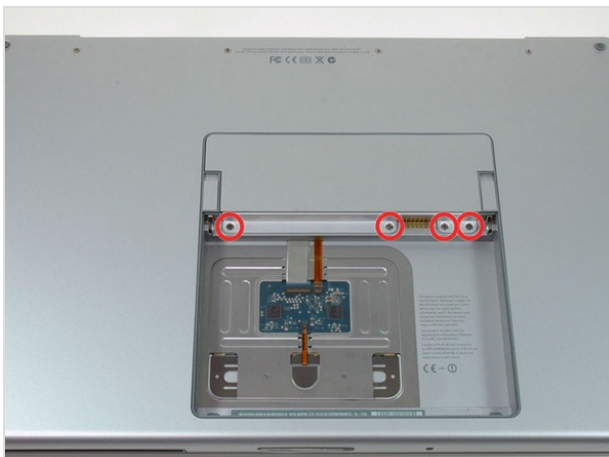
- [MacBook Pro 17" Memory Door](#) (1)

Removing a few screws will remove this part and allow access to your RAM.



### Step 1 — Battery

- Use your fingers to push both battery release tabs away from the battery and lift the battery out of the computer.



### Step 2 — RAM Shield

- Remove the four identical Phillips screws from the memory door.



### **Step 3**

- Lift the memory door up enough to get a grip on it, and slide it toward you, pulling it away from the casing.

To reassemble your device, follow these instructions in reverse order.

This document was last generated on Feb 23, 2012.