



# Installing PowerBook G3 Pismo PRAM Battery

Author: iRobot

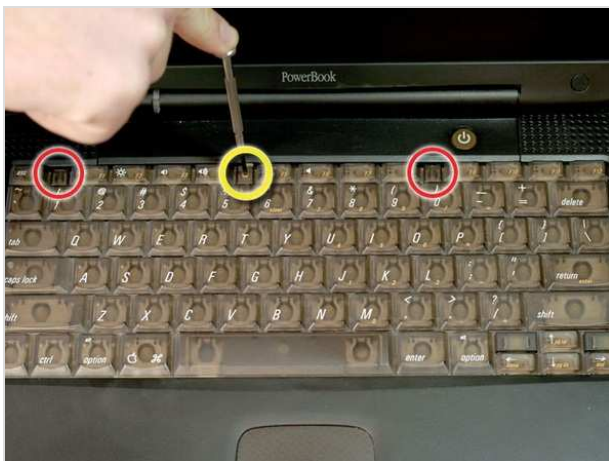
## Tools used in this guide

- [Phillips #0 Screwdriver](#) (1)

## Parts relevant to this guide

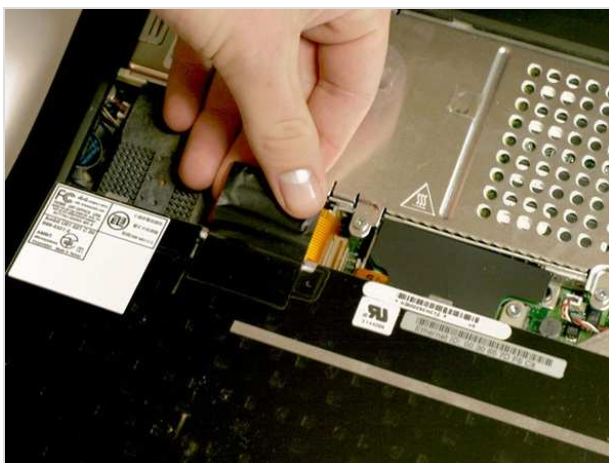
- [G3 Lombard or Pismo PRAM Battery \(New\)](#) (1)

The time and date, as well as other settings, are kept by the PRAM battery when your machine is off.



## Step 1 — Keyboard

- Turn the keyboard locking screw so that it is parallel to the space bar.
- Pull the keyboard release tabs toward you and lift up on the keyboard until it pops free.
- Lift the keyboard out by pulling it up and away from you. Rest the keyboard, face down, on top of the track pad.



## Step 2

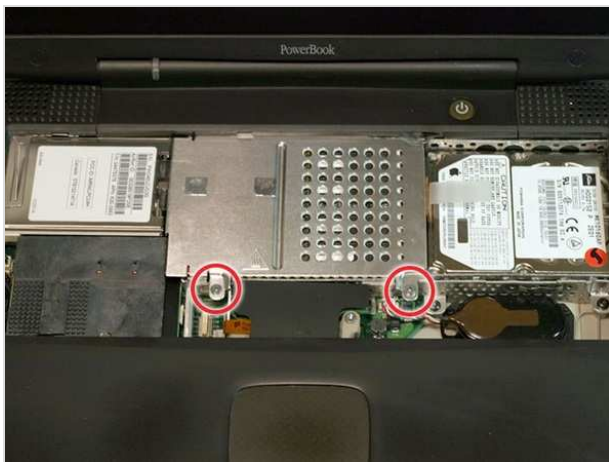
- Pull the keyboard ribbon straight up from the logic board. Place the keyboard aside.
- The connector may be tight. Gently rock the connector from side to side while pulling directly upward to free it. You can use this technique on many of the cards and cables you'll be disconnecting.
- Make sure you have removed the laptop battery and CD/DVD modules from the expansion bays before proceeding.





## Step 3

- Your laptop should look approximately like this.



## Step 4 — Heat Shield

- Remove the two silver Phillips #1 screws that attach the heat shield to the internal metal framework.
- Lift the heat shield up and pull it toward you.



## Step 5

- Your laptop should look approximately like this.



## Step 6 — Airport Card

- Skip this step if your computer does not have an Airport card installed.
- Firmly grasp the plastic tab attached to the Airport card and pull up and then to the right.
- The Airport card is still attached to the antenna cable, so don't just yank it out of the slot.



## Step 7

- Disconnect the antenna cable from the Airport card.



## Step 8 — PRAM Battery

- Pull the battery cable directly up from the logic board.
- Remove the battery from its holder by pulling up and to the left.

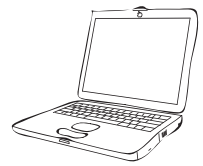


## Step 9

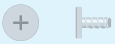
- Your laptop should look approximately like this.

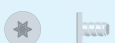
To reassemble your device, follow these instructions in reverse order.

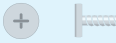
This document was last generated on Feb 23, 2012.




↓


  
Heat Shield  
2 Phillips


  
Heat Sink  
2 T8 Torx


  
Heat Sink  
1 Phillips

↓

  
Modem  
1 T8 Torx

  
HD Replacement  
4 T8 Torx

  
Inverter  
1 T8 Torx

  
Display  
4 T8 Torx


↙ ↘



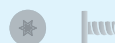
To organize your screws, simply place each screw in the appropriate box as you remove them from your laptop.


If you are not planning on immediately reassembling your laptop, you may want to tape the screws to this paper.

Due to model variations, the screws you remove may differ slightly from this guide.

  
Upper Case (top)  
4 T8 Torx


↓


  
Upper Case (top)  
1 T8 Torx


  
Upper Case (top)  
5 T8 Torx

  
Upper Case (bottom)  
5 T8 Torx

↓

  
Upper Case (bottom)  
2 T8 Torx

  
Power Card  
2 T8 Torx

  
Framework  
2 T8 Torx

