



Installing PowerBook G3 Pismo Airport Card

Author: iRobot

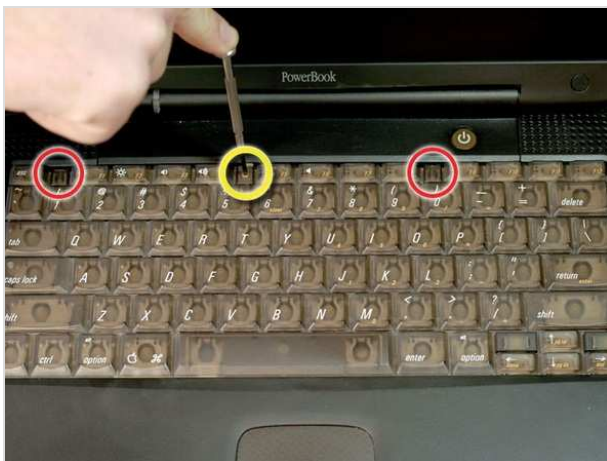
Tools used in this guide

- [Phillips #0 Screwdriver](#) (1)

Parts relevant to this guide

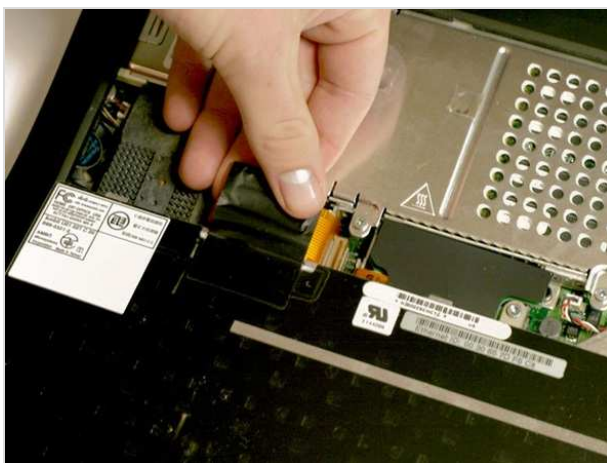
- [Airport Card](#) (1)

Install an original Airport 802.11b card internally.



Step 1 — Keyboard

- Turn the keyboard locking screw so that it is parallel to the space bar.
- Pull the keyboard release tabs toward you and lift up on the keyboard until it pops free.
- Lift the keyboard out by pulling it up and away from you. Rest the keyboard, face down, on top of the track pad.



Step 2

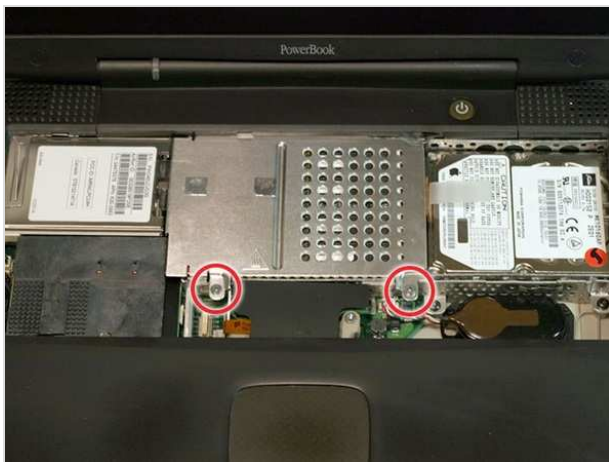
- Pull the keyboard ribbon straight up from the logic board. Place the keyboard aside.
- The connector may be tight. Gently rock the connector from side to side while pulling directly upward to free it. You can use this technique on many of the cards and cables you'll be disconnecting.
- Make sure you have removed the laptop battery and CD/DVD modules from the expansion bays before proceeding.





Step 3

- Your laptop should look approximately like this.



Step 4 — Heat Shield

- Remove the two silver Phillips #1 screws that attach the heat shield to the internal metal framework.
- Lift the heat shield up and pull it toward you.



Step 5

- Your laptop should look approximately like this.



Step 6 — Airport Card

- Skip this step if your computer does not have an Airport card installed.
- Firmly grasp the plastic tab attached to the Airport card and pull up and then to the right.
- The Airport card is still attached to the antenna cable, so don't just yank it out of the slot.

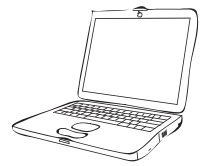


Step 7

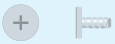
- Disconnect the antenna cable from the Airport card.

To reassemble your device, follow these instructions in reverse order.

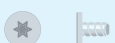
This document was last generated on Feb 23, 2012.



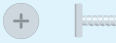
↓



Heat Shield
2 Phillips




Heat Sink
2 T8 Torx




Heat Sink
1 Phillips


↓




Modem
1 T8 Torx



HD Replacement
4 T8 Torx



Inverter
1 T8 Torx



Display
4 T8 Torx


↙ ↘



To organize your screws, simply place each screw in the appropriate box as you remove them from your laptop.

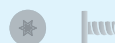
If you are not planning on immediately reassembling your laptop, you may want to tape the screws to this paper.

Due to model variations, the screws you remove may differ slightly from this guide.




Upper Case (top)
4 T8 Torx


↓



Upper Case (top)
1 T8 Torx




Upper Case (top)
5 T8 Torx




Upper Case (bottom)
5 T8 Torx


↓



Upper Case (bottom)
2 T8 Torx



Power Card
2 T8 Torx



Framework
2 T8 Torx

