



Installing PowerBook G4 Aluminum 12" 867 MHz Sleep Light

Author: iRobot

Tools used in this guide

- [Coin](#) (1)
- [Phillips #00 Screwdriver](#) (1)
- [T6 Torx Screwdriver](#) (1)

Parts relevant to this guide

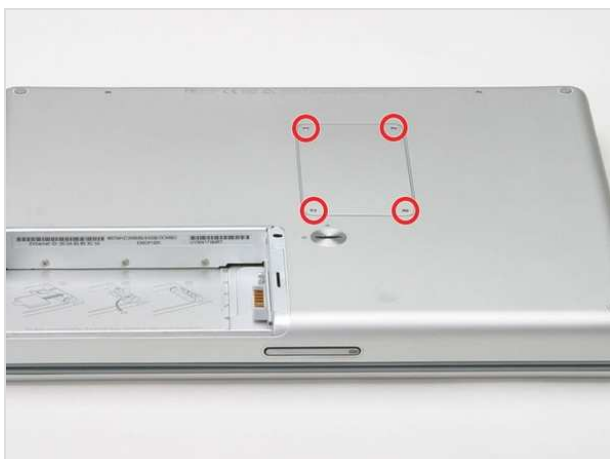
- [G4 Aluminum 12" Sleep Light](#) (1)

Replacing the pulsing white LED sleep indicator.



Step 1 — Battery

- Use a coin to turn the battery locking screw 90 degrees to the right.
- Lift the battery out of the computer.



Step 2 — EMI Finger

- Remove the four Phillips screws from the memory door.
- Slide the memory door away from the memory compartment.



Step 3

- Remove the long black Phillips screw next to the memory card.
- Remove the small EMI finger beneath the black screw.



Step 4 — Keyboard

- On the keyboard, remove the F1, F2, F11, and F12 keys.
- This is scary - take a deep breath before continuing. Place your index finger under the upper left corner of the key and lift up until you hear a click. Then, transfer your finger to the left edge of the key and lift up to pull the key off.
- You're freeing the two tabs on the left of the key from the two small holes in the plastic scissors mechanism.
- When replacing the keys in the keyboard, place the key directly over the slot where it will go and press down until you hear the key click into place.



Step 5

- Use your fingernail or a small flathead screwdriver to peel up the gray stickers covering each of the screws.



Step 6

- Remove the two short Phillips screws.



Step 7

- Lift the keyboard by the 'esc' and 'eject' keys and gently lift up until the keyboard is vertical.



Step 8

- Grasp the keyboard connector ribbon near the connector and disconnect it from the logic board.



Step 9 — Upper Case

- Remove the three small Phillips screws from within the battery compartment.



Step 10

- Turn the computer 90 degrees clockwise and remove the two medium-length Phillips screws from the casing.



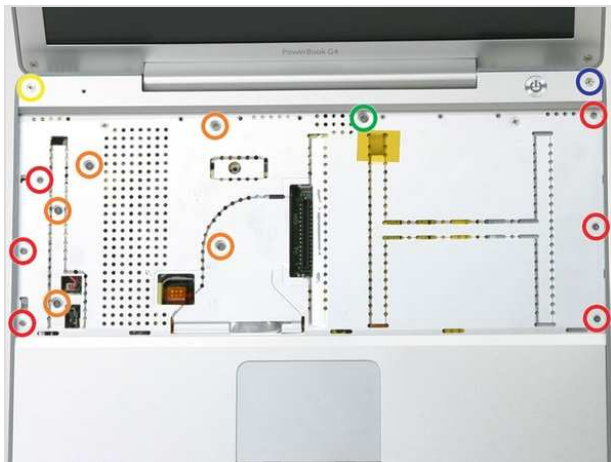
Step 11

- Turn the computer 90 degrees clockwise again, and remove only the bottom screw on either side of the hinge.



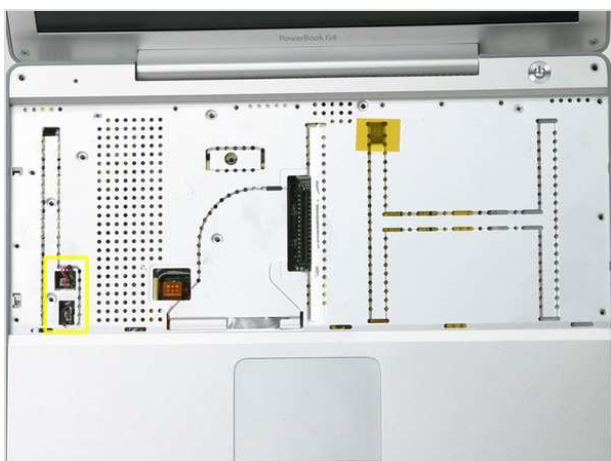
Step 12

- Turn the computer 90 degrees clockwise just one more time, and remove the two Phillips screws on the exterior wall of the battery compartment.
- Remember these two screws are longer and have shoulders.



Step 13

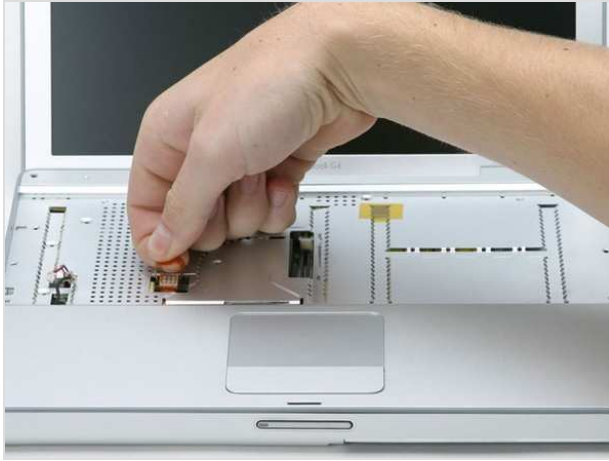
- Turn the computer over and open it up.
- Remove the following 14 screws:
 - Six 2.5 mm Phillips on either side of the keyboard area.
 - Five 4.5 mm Phillips on the left half of the keyboard area.
 - One 7 mm hex in the upper left corner of the upper case (a T6 Torx driver will do the job nicely).
 - One 15 mm Phillips in the upper middle of the keyboard area.
 - One 16.5 mm hex in the upper right of the upper case (again, a T6 Torx driver will work well).



Step 14

- Peel up the two pieces of foil tape on the left side of the keyboard area.
- The connectors at the ends of the cables are attached very firmly to the sockets on the logic board. Pulling directly on the cable will either separate the cable from its connector or the socket from the logic board.
- Carefully disconnect the microphone and power cables from the logic board. Using your fingernails or a dental pick, carefully pry the connectors from their sockets. Make sure you're pulling only on the connector and not on the socket.





Step 15

- Use the orange plastic loop to disconnect the trackpad cable.



Step 16

- Starting at one of the upper corners near the screen, work around the frame, separating the upper case from the lower case.



Step 17

- Lift the upper case off the computer.



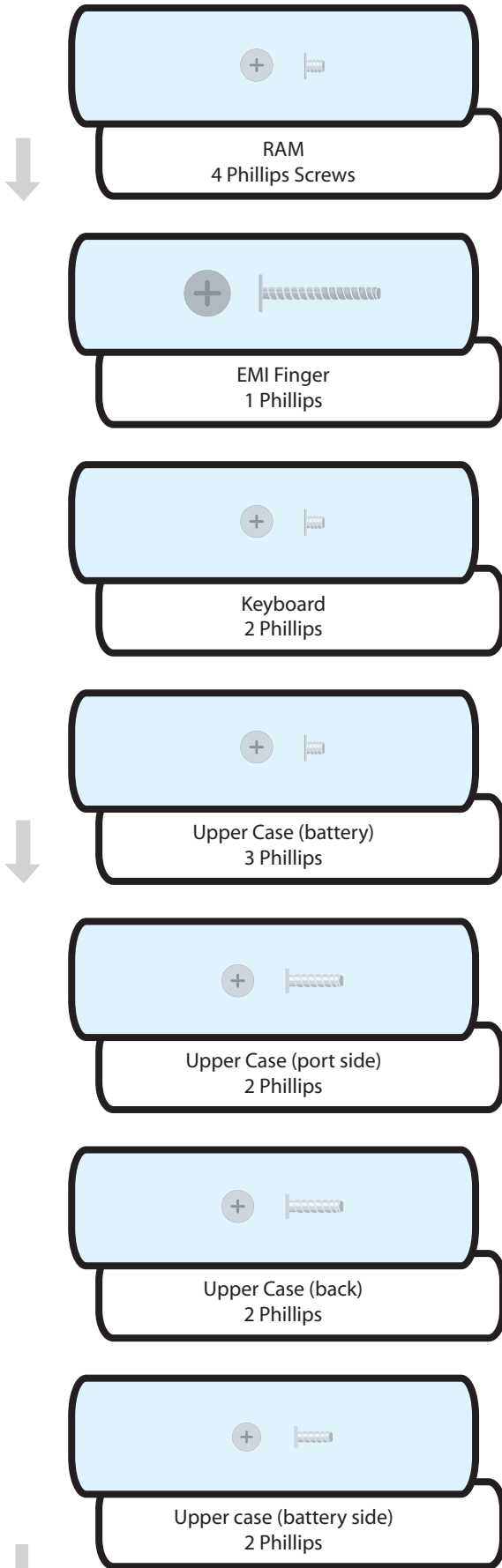
Step 18 — Sleep Light

- Remove the single Phillips screw securing the sleep light to the latch mechanism.
- Lift the sleep light out of the computer.

To reassemble your device, follow these instructions in reverse order.

This document was last generated on Feb 23, 2012.

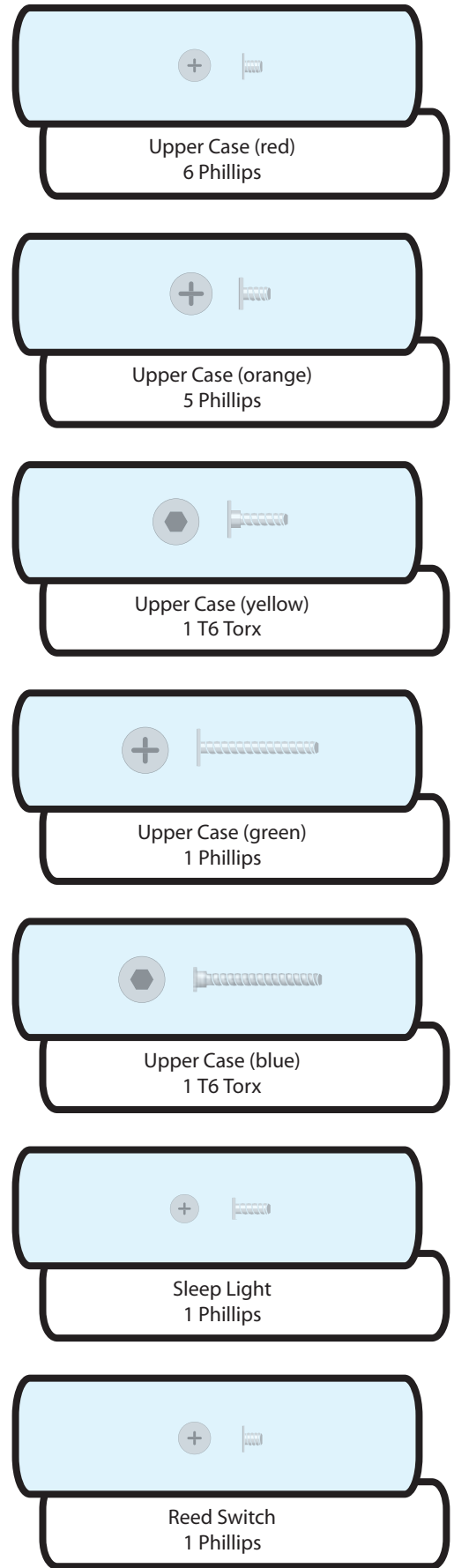
Aluminum 12" Screw Guide



To organize your screws, simply place each screw in the appropriate box as you remove them from your laptop.

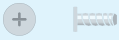
If you are not planning on immediately reassembling your laptop, you may want to tape the screws to this paper.

Due to model variations, the screws you remove may differ slightly from this guide.






↓



RJ-11 Board
1 Phillips




Hard Drive
2 Phillips




HD Replacement (bottom)
2 Phillips

↓



HD Replacement (side)
2 Phillips



Modem
2 Phillips



Heat Sink & Fan (inverter)
1 Phillips



Heat Sink & Fan (red)
1 Phillips

↙ ↘



To organize your screws, simply place each screw in the appropriate box as you remove them from your laptop.

If you are not planning on immediately reassembling your laptop, you may want to tape the screws to this paper.

Due to model variations, the screws you remove may differ slightly from this guide.




Heat Sink & Fan (orange)
3 Phillips

↓




Heat Sink & Fan (yellow)
2 Phillips




Heat Sink & Fan (green)
2 Phillips


↓




DC-to-DC Board (red)
1 Phillips



DC-to-DC Board (orange)
2 Phillips



DC-to-DC Board (yellow)
1 Phillips





DC-to-DC Board (green)
1 4mm standoff


↓




↓



Metal Framework
2 Phillips



Metal Framework (RJ-11)
2 Phillips



Metal Framework (ports)
2 Phillips

↓


Metal Framework (red)
1 Phillips


Metal Framework (orange)
2 Phillips


Metal Framework (yellow)
1 Phillips


Metal Framework (green)
1 Phillips


↙ ↘




To organize your screws, simply place each screw in the appropriate box as you remove them from your laptop.


If you are not planning on immediately reassembling your laptop, you may want to tape the screws to this paper.

Due to model variations, the screws you remove may differ slightly from this guide.



Logic Board
2 Phillips


↓



DC-In Board
1 Phillips



Optical Drive (metal bracket)
2 Phillips

↓


Optical Drive
2 Phillips


Bluetooth
1 Phillips


Subwoofer
1 Phillips


Display
4 Phillips

