



Installing PowerBook G3 Wallstreet Keyboard

Author: iRobot

Parts relevant to this guide

- [G3 WallStreet Keyboard](#) (1)

Replacing this keyboard is easy and takes only a few minutes.



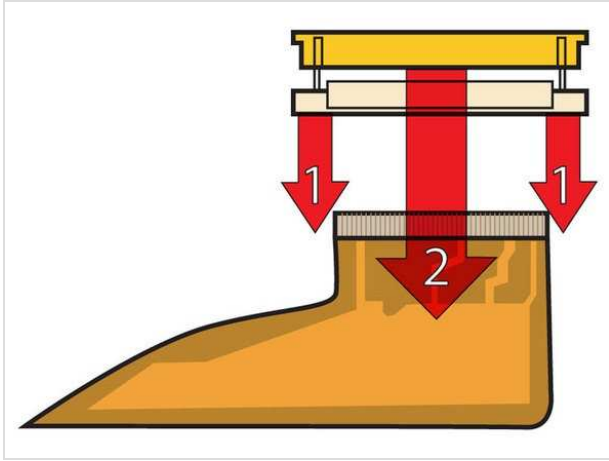
Step 1 — Keyboard

- Remove both expansion bay modules using the levers on the front of the computer.
- Insert your index fingers inside the expansion bays and search for the two ribbed tabs on the underside of the upper case. The tabs are located near the bottom corners of the keyboard.
- Pull the tabs toward yourself and the keyboard will pop up.




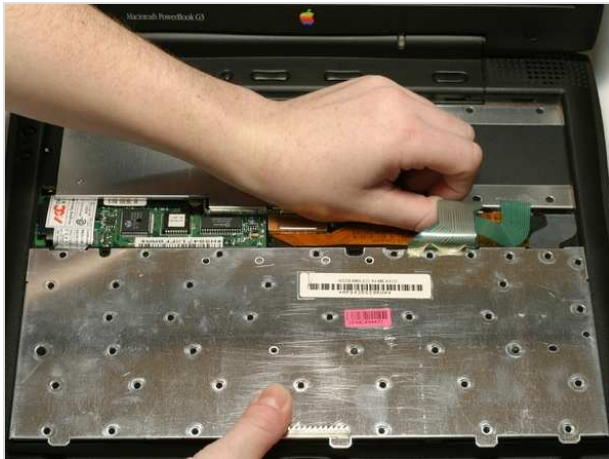
Step 2

- Pull the keyboard forward to disengage the tabs holding it in back and rotate it toward you.
- Rest the keyboard on the trackpad.



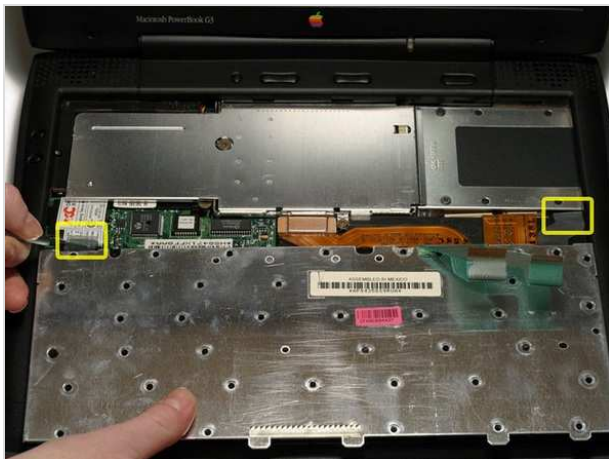
Step 3

- This is a diagram of the ribbon clamp connectors you will disconnect in the next step. 
- 1) With your fingernails, grasp the locking bar on either side and pull up a small amount (about 1/16" or 2 mm).
- 2) After disengaging the locking bar, slide the cable out of the connector.



Step 4

- Disconnect the two keyboard connectors by disengaging the clamps and pulling the ribbons directly upward.



Step 5

- Slide a spudger or screwdriver downward between each plastic strain relief cable and the wall of the case in order to bow out the cable beyond the small tab holding it in place.
- Once the strain relief cables are free, lift the keyboard off.



Step 6

- Your laptop should look approximately like this.

To reassemble your device, follow these instructions in reverse order.

This document was last generated on Feb 23, 2012.

G3 WallStreet Screw Guide



↓

Heat Shield
1 Phillips

Heat Shield
1 Phillips

HD Replacement
4 T8 Torx

↓

Modem
1 Phillips

Display
4 T8 Torx

Upper Case (top)
4 T8 Torx

↙ ↘



To organize your screws, simply place each screw in the appropriate box as you remove them from your laptop.

If you are not planning on immediately reassembling your laptop, you may want to tape the screws to this paper.

Due to model variations, the screws you remove may differ slightly from this guide.

Upper Case (bottom)
6 T8 Torx

↓

Upper Case (bottom)
2 T8 Torx

PMU
1 T8 Torx

Power Card
1 T8 Torx

↓

Power Card
1 1/4 inch Standoff

PC Card Cage
4 T6 Torx