



# Disassembling BlackBerry 8703e Keyboard

Author: Johnathon Gorski

This guide describes how to disassemble a BlackBerry 8703e keyboard.



## Step 1 — Battery

- Press and hold down the bottom button on the back of the device, whilst sliding down the battery cover.
- Place the battery cover to one side.



## Step 2

- Insert your finger in the small notch highlighted in the photograph and remove the battery from the back of the phone.
- Place the battery to one side.
- The battery is not pictured.




## Step 3 — Case

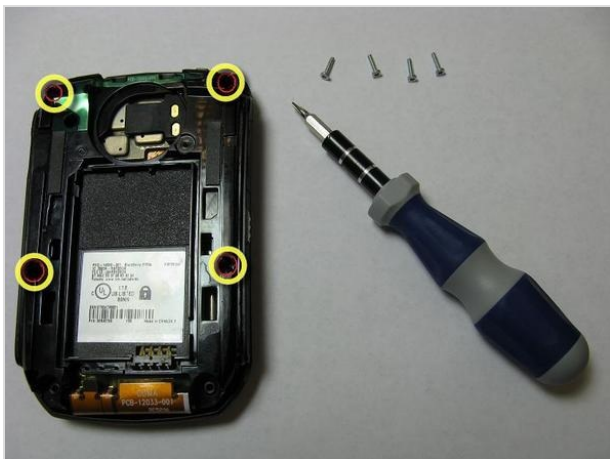
- Place the phone screen down and use a [T6 Torx Screwdriver](#) to remove the 3 screws highlighted in the picture.
- Carefully store the screws together where they will not be lost.






## Step 4

- You may need to use **significant force** to completely remove the back casing from the remainder of the phone. 
- Using your thumb and beginning with the notch shown in the picture at the bottom of the phone, start to separate the back casing from the phone.
- Insert the [Spudger](#) in the separation you created. While still applying *significant force* with your thumb, slide the [Spudger](#) up the separation from the bottom of the phone to the top until you remove the back casing.
- Set the back casing to the side.





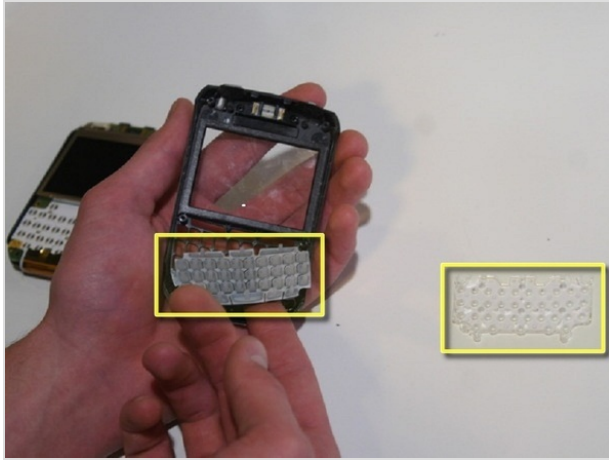
## Step 5

- **Do not** separate the front casing from the rest of the phone during this step. 
- Remove the 4 screws on the back of the phone that are highlighted in the picture using a [T6 Torx Screwdriver](#).
- Carefully store the screws where they will not be lost




## Step 6

- 2 keyboard components and a small black port protector may accidentally fall out during this step. If this happens, do not be alarmed, simply place them to the side. 
- Hold the phone with the screen facing the ground and remove the front casing from the rest of the phone.
- The port protector is not shown in the second picture. 



## Step 7 — Keyboard

- The 2 keyboard components highlighted in the picture may fall out of the front casing but remain stuck together. 
- If the keyboard components did not fall off while removing the front casing, remove them from the front casing and place them to the side.

This document was last generated on Feb 23, 2012.