



# Installing iBook G4 14" 933 MHz-1.33 GHz Lower Case

Author: iRobot

## Tools used in this guide

- [Coin](#) (1)
- [Phillips #00 Screwdriver](#) (1)
- [Small Flathead Screwdriver](#) (1)
- [Spudger](#) (1)
- [T8 Torx Screwdriver](#) (1)

## Parts relevant to this guide

- [iBook G4 14" Lower Case](#) (1)

Replacing the plastic bottom case.



## *Step 1 — Battery*

- Use a coin to rotate the battery locking screw 90 degrees clockwise.



### **Step 2**

- Lift the battery out of the computer.



### **Step 3 — Lower Case**

- Use a pin (or anything you like) to remove the three rubber feet from the lower case.



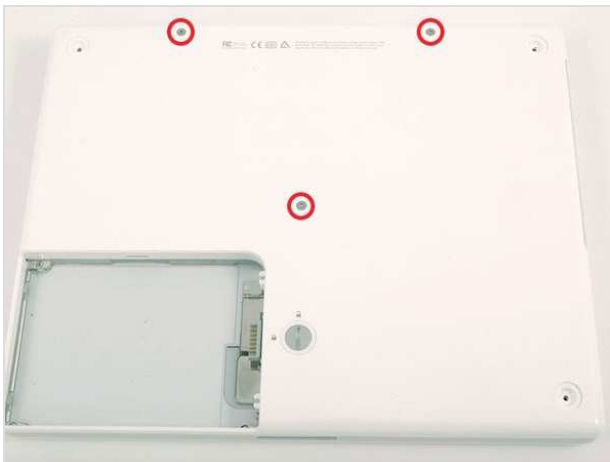
### **Step 4**

- Remove the three newly-revealed Phillips screws.



## Step 5

- Use a spudger or small flathead screwdriver to pry up the three metal rings that housed the rubber bumpers.



## Step 6

- Remove the three hex screws using a T8 Torx screwdriver (or Allen screws using an Allen key if these are used).
- The shorter screw is in the center of the computer.




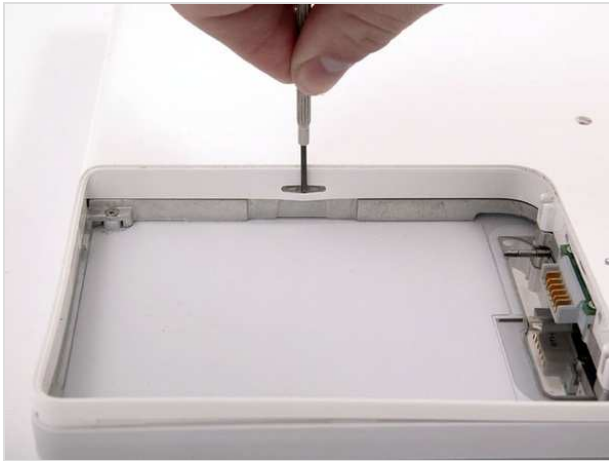
## Step 7

- Remove the two Phillips screws on either side of the battery contacts.




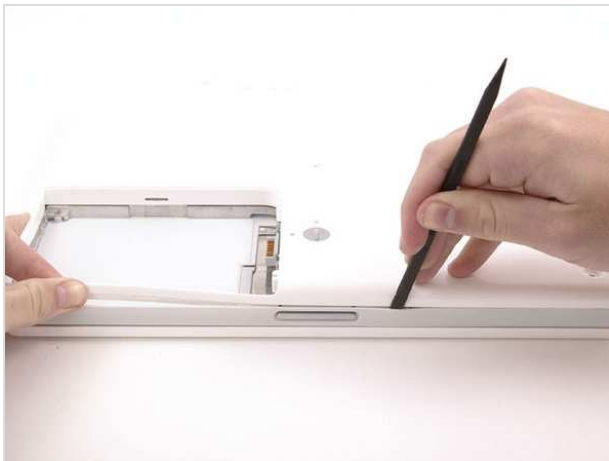
### Step 8

- Breathe deeply. Trying times are ahead, but we promise the lower case does come off. 
- Push the thin rims of the lower case surrounding the battery compartment in, bending them past the tabs, and then lift up to free that corner of the lower case.



### Step 9

- There is a slot on the wall of the battery compartment that locks the lower case in place. Use a small flathead screwdriver to pry out the slot's lower rim and pull up on the lower case to free the slot from the tabs holding it.
- Be careful not to break this clip! 



### Step 10

- Run a spudger along the seam between the lower case and upper case on the front of the computer to free the tabs locking the lower case. Pull up on the lower case and continue to use the spudger as necessary until you hear three distinct clicks.



### Step 11

- Continue to run the spudger around the front, right corner. There are two tabs on the port side of the computer, one near the front corner and one near the sound-out port.



### Step 12

- There are three tabs over the optical drive that must be released before the lower case can come off. Slide the spudger into the lower case above the optical drive and run it toward the back of the computer until you hear three distinct clicks.



### Step 13

- Once the front and sides of the lower case are free, turn the computer so that the back is facing you and pull the lower case up and toward you until the back tabs pop free (it may be helpful to jiggle the case up and down).



## **Step 14**

- Remove the small greasy springs with white plastic caps from either side of the battery contacts.

To reassemble your device, follow these instructions in reverse order.

This document was last generated on Feb 23, 2012.



↓

  
RAM Shield  
4 Phillips Screws

  
Lower Case (under feet)  
3 Phillips

  
Lower Case  
1 T8 Torx

  
Lower Case  
2 T8 Torx

↓

  
Lower Case (battery compartment)  
2 Phillips

  
Bottom Shield (red)  
6 Phillips

  
Bottom Shield (orange)  
3 Phillips

↙ ↘





To organize your screws, simply place each screw in the appropriate box as you remove them from your laptop.


If you are not planning on immediately reassembling your laptop, you may want to tape the screws to this paper.


Due to model variations, the screws you remove may differ slightly from this guide.

↓


  
Bottom Shield (yellow)  
1 Phillips

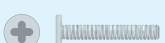
  
DC-In Board  
1 Phillips

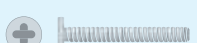
  
Battery Connector  
2 Phillips

  
Upper Case (bottom - red)  
3 Phillips

↓

  
Upper Case (bottom - orange)  
3 Phillips

  
Upper Case (bottom - yellow)  
1 Phillips

  
Upper Case (bottom - green)  
4 Phillips

↓



↓

Upper Case (top)  
1 Phillips

Upper Case (top)  
2 Phillips

Sleep Light  
1 Phillips

↓

Top Shield (red)  
13 Phillips

Top Shield (orange)  
1 Phillips

Top Shield (yellow)  
2 Phillips

Modem  
2 Phillips

↙ ↘



To organize your screws, simply place each screw in the appropriate box as you remove them from your laptop.

If you are not planning on immediately reassembling your laptop, you may want to tape the screws to this paper.

Due to model variations, the screws you remove may differ slightly from this guide.

Hard Drive  
4 Phillips

↓

Hard Drive Replacement  
4 T8 Torx

Optical Drive (red)  
1 Phillips

Optical Drive (orange)  
1 Phillips

↓


Optical Drive (yellow)  
1 Phillips

I/O Bezel  
1 Phillips

I/O Bezel  
1 Phillips



↓



Display  
2 Phillips



Hinge Grill  
1 Phillips



Hinge Grill  
1 Phillips


↓




Heat Sink (black)  
1 Phillips



Heat Sink (red/orange)  
4 Phillips



Heat Sink (yellow)  
1 Phillips



Heat Sink (green)  
1 Phillips


↙ ↘




To organize your screws, simply place each screw in the appropriate box as you remove them from your laptop.

If you are not planning on immediately reassembling your laptop, you may want to tape the screws to this paper.


Due to model variations, the screws you remove may differ slightly from this guide.



Heat Sink (blue/purple)  
1 nut, 2 standoffs




Fan  
4 Phillips




Logic Board (top)  
1 Phillips


↓




Logic Board (red)  
2 Phillips



Logic Board (orange)  
1 Phillips



Logic Board (yellow)  
1 Phillips



Logic Board (green)  
4 Phillips

↓

