



MacBook Pro 15" Unibody Mid 2009 Hard Drive Replacement

Author: Andrew Bookholt

Tools used in this guide

- [5-Point Torx Plus Pentalobe MacBook Pro Battery Removal Tool](#) (1)
- [Phillips #00 Screwdriver](#) (1)
- [Spudger](#) (1)
- [T6 Torx Screwdriver](#) (1)

Parts relevant to this guide

- [500 GB 5400 RPM Western Digital SATA Hard Drive \(New\)](#) (1)
- [500 GB 7200 RPM Seagate SATA Hard Drive \(New\)](#) (1)
- [750 GB 7200 RPM Seagate SATA Hard Drive \(New\)](#) (1)
- [Universal Drive Adapter](#) (1)

Upgrade your hard drive for more storage space.



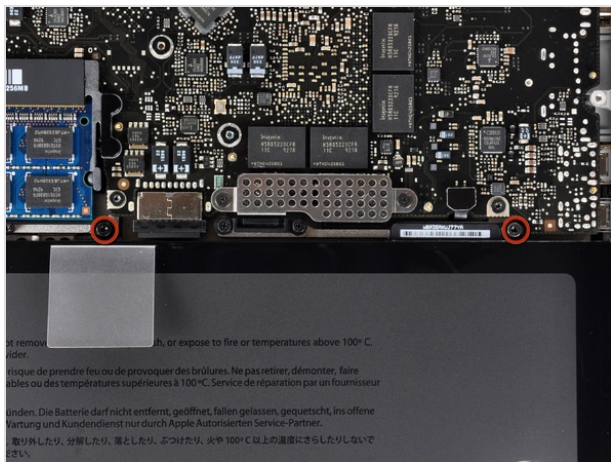
Step 1 — Lower Case

- Remove the following ten screws securing the lower case to the upper case:
 - Seven 3 mm Phillips screws.
 - Three 13.5 mm Phillips screws.






Step 2

- Using both hands, lift the lower case near the vent to pop it off two clips securing it to the upper case.
- Remove the lower case and set it aside.



Step 3 — Battery

- Three special five-point Torx screws secure the battery to the upper case. 
- Use Apple specialty tool 922-9101 or [iFixit's 5-point Torx driver](#) to remove the two exposed five-point Torx security screws along the top edge of the battery.
- A common 1.5 mm flathead screwdriver also works well enough to remove the screws. 
- You do not necessarily have to follow steps 3-6 to remove the battery in order to replace the hard drive. However it is recommended to remove all power sources from electronics before working on them. 



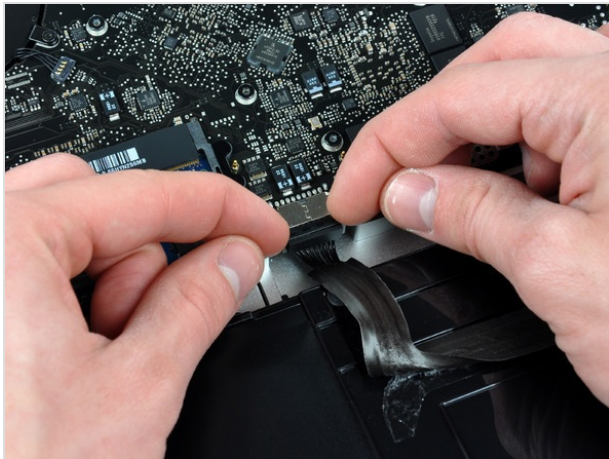
Step 4

- Use the tip of a spudger to bend back the finger of the "Warning: Do not remove the battery" sticker while you remove the five-point Torx screw hidden underneath.



Step 5

- Lift the battery by its plastic pull tab and slide it away from the long edge of the upper case.
- Do not try to completely remove the battery just yet.



Step 6

- Tilt the battery back enough to access the battery cable connector.
- Pull the battery cable connector away from its socket on the logic board and remove the battery from the upper case.



Step 7 — Hard Drive

- Remove the two Phillips screws securing the hard drive bracket to the upper case.
- These screws are captive to the hard drive bracket.
- Lift the the retaining bracket out of the upper case.





Step 8

- Lift the hard drive by its pull tab and pull it out of the chassis, minding the cable attaching it to the computer.



Step 9

- Remove the hard drive cable by pulling its connector straight away from the hard drive.



Step 10 — Hard Drive Replacement

- Remove two T6 Torx screws from each side of the hard drive (four screws total).
- You'll need to transfer these screws to your new hard drive if you're changing drives.
- If you are installing a new hard drive, we have an [OS X install guide](#) to get you up and running.



To reassemble your device, follow these instructions in reverse order.