



Installing PowerBook G3 Wallstreet Logic Board

Author: iRobot

Tools used in this guide

- [Anti-Static Wrist Strap](#) (1)
- [Phillips #0 Screwdriver](#) (1)
- [Spudger](#) (1)
- [T8 Torx Screwdriver](#) (1)

Parts relevant to this guide

- [G3 WallStreet Logic Board \(66 MHz\)](#) (1)
- [G3 WallStreet Logic Board \(83 MHz\)](#) (1)

If one of the ports on the back goes bad, you'll have to remove all the parts and replace the logic board.



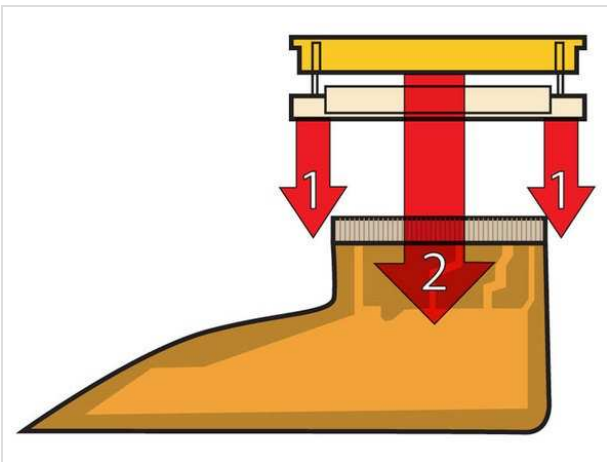
Step 1 — Keyboard

- Remove both expansion bay modules using the levers on the front of the computer.
- Insert your index fingers inside the expansion bays and search for the two ribbed tabs on the underside of the upper case. The tabs are located near the bottom corners of the keyboard.
- Pull the tabs toward yourself and the keyboard will pop up.




Step 2

- Pull the keyboard forward to disengage the tabs holding it in back and rotate it toward you.
- Rest the keyboard on the trackpad.



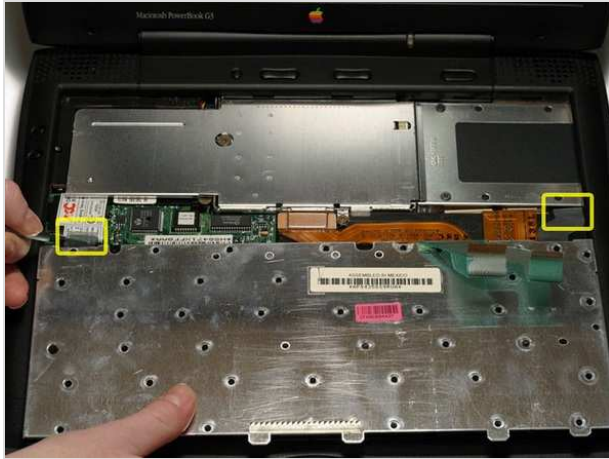
Step 3

- This is a diagram of the ribbon clamp connectors you will disconnect in the next step. 
- 1) With your fingernails, grasp the locking bar on either side and pull up a small amount (about 1/16" or 2 mm).
- 2) After disengaging the locking bar, slide the cable out of the connector.



Step 4

- Disconnect the two keyboard connectors by disengaging the clamps and pulling the ribbons directly upward.



Step 5

- Slide a spudger or screwdriver downward between each plastic strain relief cable and the wall of the case in order to bow out the cable beyond the small tab holding it in place.
- Once the strain relief cables are free, lift the keyboard off.



Step 6

- Your laptop should look approximately like this.



Step 7 — Heat Shield

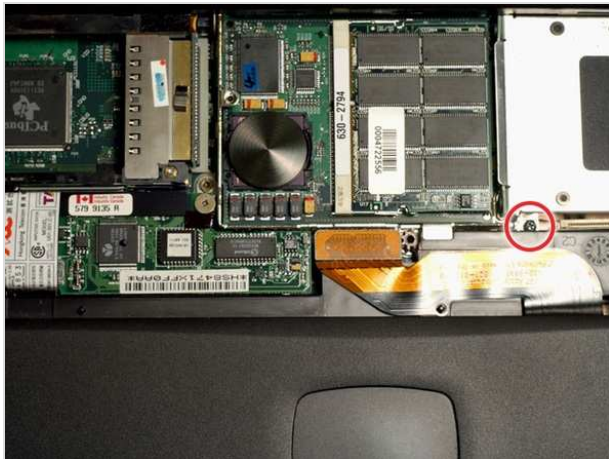
- Remove the two Phillips screws from the heat shield.
- One screw is shorter than the other. When putting the Wallstreet back together, this screw goes in the middle of the heat shield.





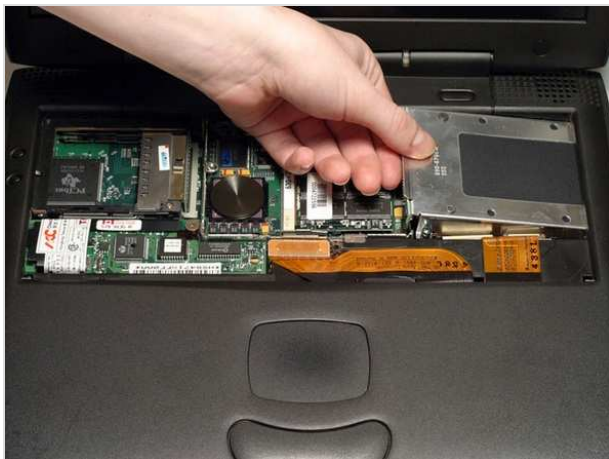
Step 8

- Grasp the metal handle on the heat shield and pull up and toward yourself.



Step 9 — Hard Drive

- Unscrew, but do not remove, the single Phillips screw from the hard drive bracket.



Step 10

- Grasp the hard drive bracket on the left side and pull up and to the left.



Step 11

- Your laptop should look approximately like this.



Step 12 — Processor

- Use a spudger, the tips of your fingers, or a flat non-metal tool to pry up the processor's right side.
- Remove the processor by sliding it up and to the right.
- The processor and RAM can be removed as a unit. It is not necessary to remove the RAM from the processor.
- There are two tabs on the left side of the processor that fit into slots on the metal framework. Make sure these tabs are in the slots.



Step 13 — Modem

- Remove the single Phillips screw from the modem.
- Disconnect the orange PMU cable by pulling it directly up.



Step 14

- Disconnect the modem from the logic board by lifting up on the right side using a spudger, the tip of your finger, or a flat non-metal tool.
- Remove the modem by sliding it up and to the right.



Step 15

- Your laptop should look approximately like this.



Step 16 — Clutch Cover

- Push the display back so that it lies flat.
- Slip a spudger or your index finger under the clutch cover near the power button and pull upward until you feel it come free.
- Repeat the previous step on the left side.



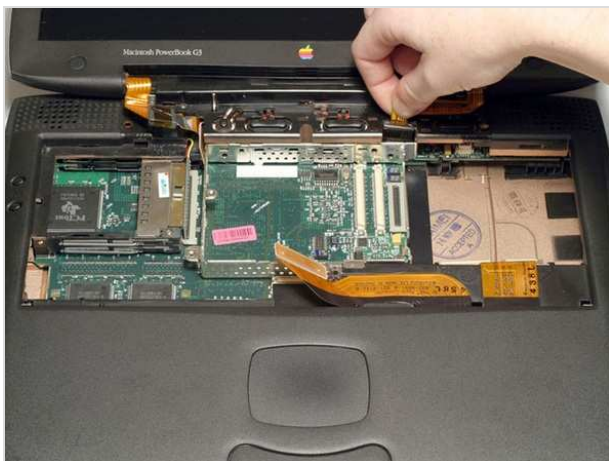
Step 17

- Lift the clutch cover off by rotating it up and then toward you.



Step 18 — Display

- Disconnect the orange display data cable on the left side of the computer. Grasp the cable near the connector and pull directly up.



Step 19

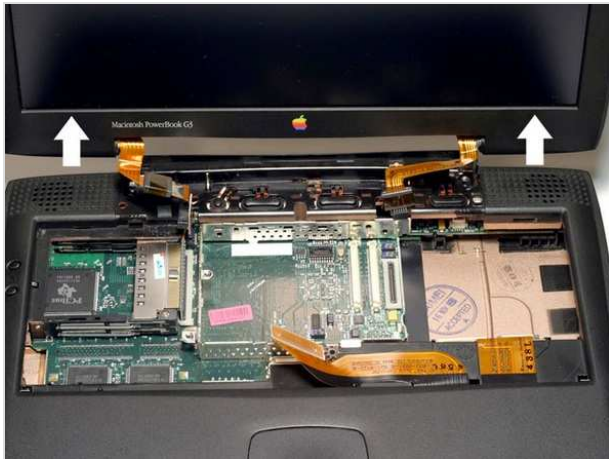
- Disconnect the orange display inverter cable on the right side of the computer. Grasp the cable near the connector and pull directly up.
- Make sure that both cables are free from the plastic casing before proceeding to the next step.





Step 20

- Turn the laptop around so that its back faces you.
- Open the port door located at the back of the laptop.
- Remove the four black T8 Torx screws.



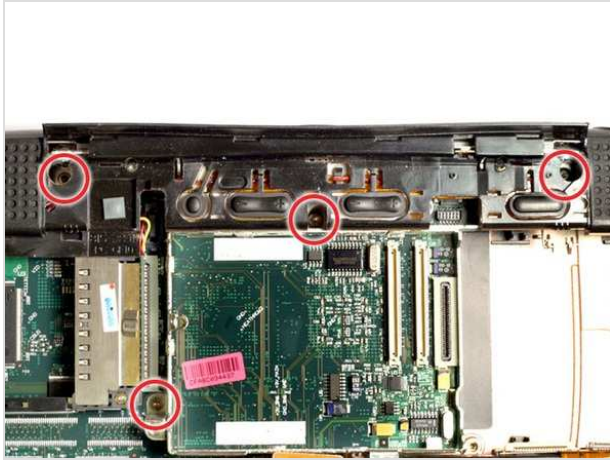
Step 21

- Turn the laptop back around so that the screen faces you.
- Adjust the display so that it is in a vertical position.
- Hold the display on both sides and pull directly up until its hinges are free of their mounts



Step 22

- Your laptop should look like this.



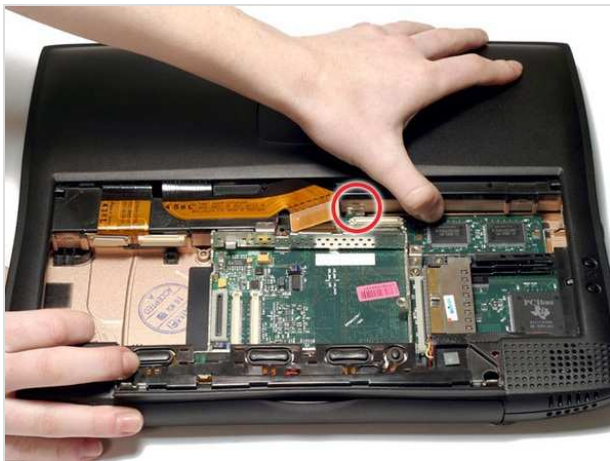
Step 23 — Upper Case

- Remove the four T8 Torx screws from the upper case.



Step 24

- Turn the laptop over.
- Remove the eight T8 Torx screws from the bottom casing.
- There are two longer screws in the front left and front right corners; make sure to put them back in the proper place when reassembling.




Step 25

- Turn the laptop over.
- Disengage the small locking tab by pressing in on the upper case to the right of the PMU connector.
- Lift the upper case up just enough so that the tab rests on its metal bracket.



Step 26

- Grasp the upper case near the back left corner and lift up partly so that you can access and disconnect the audio in/out cable from the sound card in the upper right corner of the case.
- Be careful not to lift the upper casing too far before you have disconnected the audio in/out cable. 
- Remove the upper casing. Note that there are two tabs on the laptop's front that often cause the upper case to stick.




Step 27

- Your laptop should look approximately like this.



Step 28 — Power Card

- Remove the single black T8 Torx screw from the power card.
- Grasp the power card near the black plastic shield toward the center of the case and lift up.
- Occasionally, a post connecting the power card to the logic board will come out with the power card. 



Step 29 — DC & Sound Card

- Lift the sound card out by pulling up on both the right and left sides.
- If the sound card sticks, pull the black metal wall of the casing toward you while lifting the right side of the sound card up.



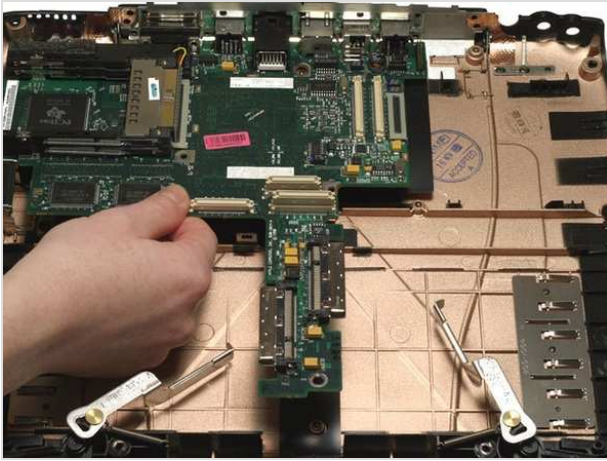
Step 30 — Fan

- Disconnect the fan connector from the logic board.
- Remove the fan by pulling it directly up.



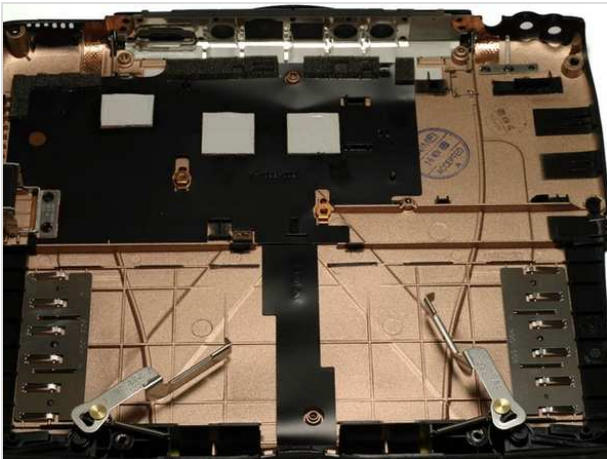
Step 31

- Your laptop should look approximately like this.



Step 32 — Logic Board

- Turn the laptop around so that the front is facing you.
- The post connecting the power card to the logic board may still be attached to the board. Remove the post using needle-nose pliers.
- Gently lift the front edge of the logic board and then pull it toward you.



Step 33

- Your laptop should look approximately like this.


To reassemble your device, follow these instructions in reverse order.

This document was last generated on Feb 23, 2012.


G3 WallStreet Screw Guide




↓



Heat Shield
1 Phillips




Heat Shield
1 Phillips




HD Replacement
4 T8 Torx


↓



Modem
1 Phillips



Display
4 T8 Torx



Upper Case (top)
4 T8 Torx


↙ ↘



To organize your screws, simply place each screw in the appropriate box as you remove them from your laptop.


If you are not planning on immediately reassembling your laptop, you may want to tape the screws to this paper.

Due to model variations, the screws you remove may differ slightly from this guide.



Upper Case (bottom)
6 T8 Torx


↓



Upper Case (bottom)
2 T8 Torx

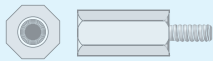


PMU
1 T8 Torx




Power Card
1 T8 Torx

↓



Power Card
1 1/4 inch Standoff



PC Card Cage
4 T6 Torx

