



iMac Intel 27" EMC 2309 and 2374 Optical Drive Replacement

Author: Walter Galan



Tools used in this guide

- [Heavy-duty Suction Cups](#) (1)
- [Paper Clip](#) (1)
- [Spudger](#) (1)
- [T10 Torx Screwdriver](#) (1)
- [Tweezers](#) (1)

DVD writer not writing? Get back in business and replace your optical drive.



Step 1 — Glass Panel

- Stick a suction cup near each of the two top corners of the glass panel.
- To attach the [suction cups](#) we sell, first position the suction cup with the movable handle parallel to the face of the glass panel (as highlighted in the first and second picture). 
- While lightly holding the suction cup against the glass, raise the movable handle until it is parallel with the other handle (as highlighted by the third picture).
- If your suction cups refuse to stick, try cleaning both the glass panel and the suction cup with a mild solvent. 



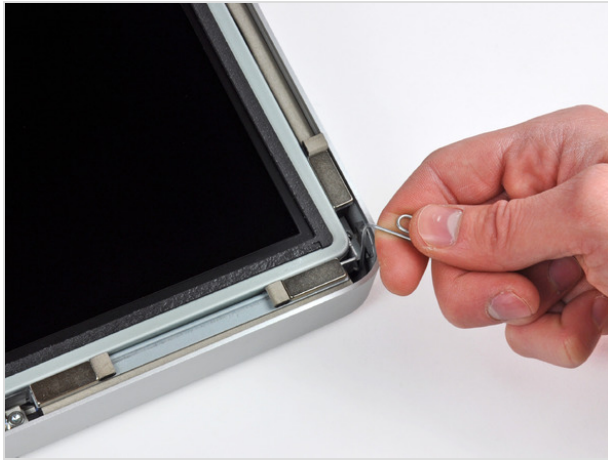
Step 2

- Gently lift the glass panel perpendicular to the face of the LCD enough to clear the steel mounting pins attached along the underside of the top edge of the glass panel.
- Pull the glass panel away from the lower edge of the iMac and carefully set it aside.
- During reinstallation, be sure to meticulously clean the inside of the glass panel and the face of the LCD as any dust or fingerprints trapped inside will be annoyingly visible when the machine is turned on.






Step 3 — Display

- Remove the eight T10 Torx screws securing the LCD to the outer case.



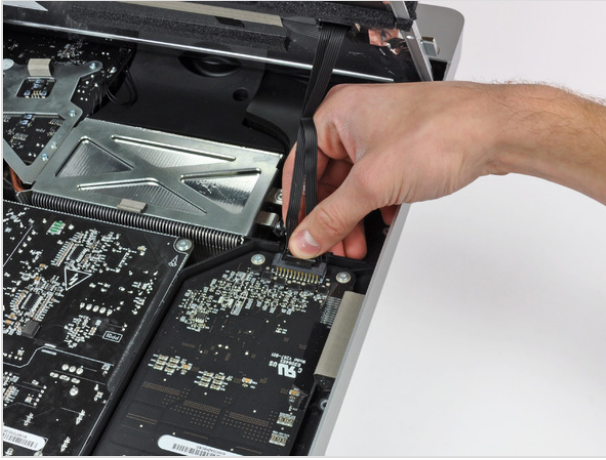
Step 4

- Carefully lay the iMac stand-side down on a flat surface.
- Due to tight tolerances, you will have to use a thin hooked tool to lift the display out of the outer case. As seen in the third picture, we made one out of a bent paperclip. 
- Use a thin hooked tool to lift one side of the top edge of the display by its steel outer frame.
- After lifting the top edge of the display on one side, hold it out of the outer case while you use a hooked tool to lift the other side. 
- Do not lift the top edge of the display out of the outer case too far, as several short ribbon cables still connect the two components. 



Step 5

- Use a pair of tweezers to pull the vertical sync ribbon cable out of its socket on the LED driver board near the top left corner of your iMac.



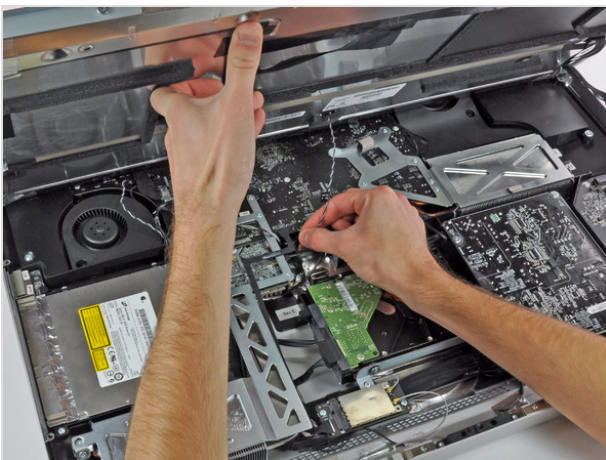
Step 6

- Rotate the display out of the outer case enough to disconnect the LED backlight power cable from the LED driver board.



Step 7

- Squeeze the two display data cable connector arms together to unlock it from its socket on the logic board.
- Pull the display data cable connector away from its socket on the logic board.



Step 8

- Lift the display for enough clearance to disconnect the LCD thermal sensor cable connector from its socket on the logic board.



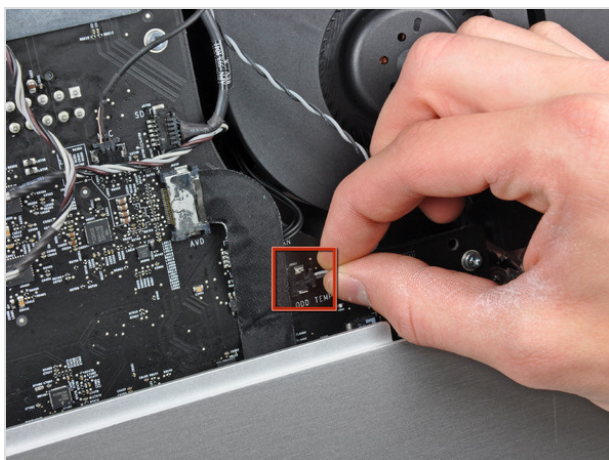
Step 9

- Carefully pull the display toward the top edge of your iMac and lift it out of the outer case.



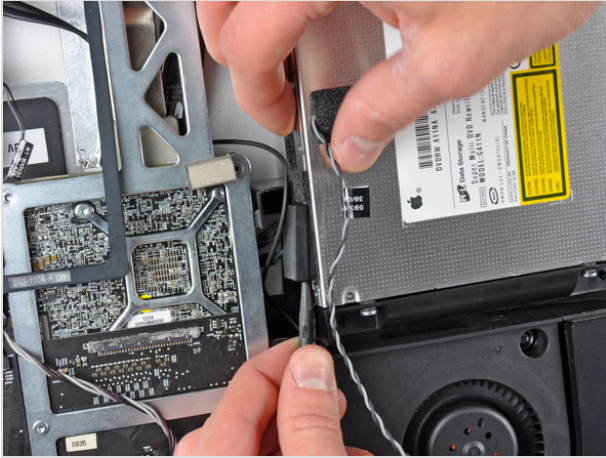
Step 10 — Optical Drive

- Remove the four T10 Torx screws securing the optical drive to the outer case.



Step 11

- Pull the optical drive thermal sensor connector straight away from its socket on the logic board.



Step 12

- Insert a spudger between the optical drive connector and the optical drive.
- Twist the spudger to slightly separate the optical drive connector from the optical drive, then use your fingers to pull the connector away from the drive.



Step 13

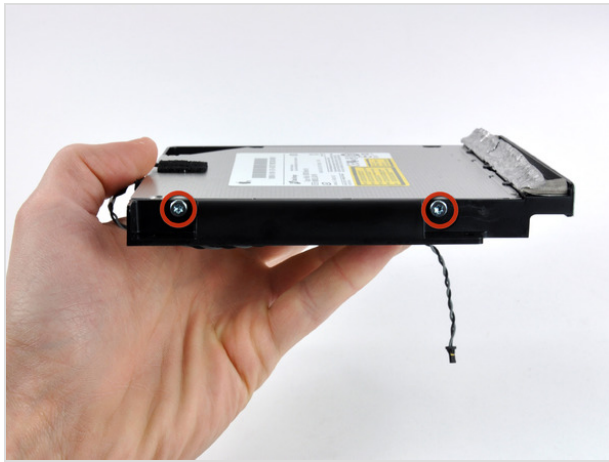
- Lift the left edge of the optical drive slightly and pull it away from the right side of the outer case.



Step 14 — Optical Drive Replacement

- Peel back the portion of aluminum tape highlighted in red, leaving the rest attached to the black plastic optical drive bracket.
- It is not necessary to peel all of the EMI tape off the optical drive bracket.





Step 15

- Remove the two T10 Torx screws from each side of the optical drive (four screws total).



Step 16

- Use the tip of a spudger to press each of the optical drive bracket tabs out of their slots on the bottom of the optical drive.
- Rotate the optical drive bracket slightly away from the optical drive.
- Pull the optical drive bracket away from the open end of the optical drive, minding any tabs that may get caught.



Step 17

- Use the tip of a spudger to peel back the piece of foam tape covering the optical drive thermal sensor.
- Use the flat end of a spudger to carefully pry the thermal sensor up off the adhesive securing it to the optical drive.
- If you have a disc or anything else stuck inside your optical drive, we have a [guide](#) to fix it.

To reassemble your device, follow these instructions in reverse order.

This document was last generated on Apr 26, 2012.