



Installing PSP 300x LCD Screen

Author: mbnewsom

Tools used in this guide

- [Phillips #00 Screwdriver](#) (1)
- [Spudger](#) (1)

Parts relevant to this guide

- [Sony PSP 3000 LCD](#) (1)

Guide for replacing the LCD Screen in a Sony PSP-3000



Step 1 — Battery

- Start on the back of the device. This is where the battery and the battery cover are located.



Step 2

- The battery door is located on the left side when looking at the PSP from the back. Lift open the battery door to reveal the battery. Remove the battery cover.
- Using your finger, pry up the top edge of the battery. Continue to pull the top edge until the bottom of the battery is free.
- Remove the battery.



Step 3 — Casing

- Using a spudger or fingernail, peel back the warranty sticker that is behind the battery.



Step 4

- Unscrew all four screws from the back of the PSP.
 - Two from behind the battery.
 - Two on the right side of the PSP.



Step 5

- Unscrew two screws from the top of the PSP.



Step 6

- Remove the single screw from the bottom surface of the PSP.



Step 7

- Starting from the 'R' shoulder button, slide the spudger in between the outer casing of the PSP, and gently pry off the casing.
- Remove the front casing completely.



Step 8 — LCD Screen

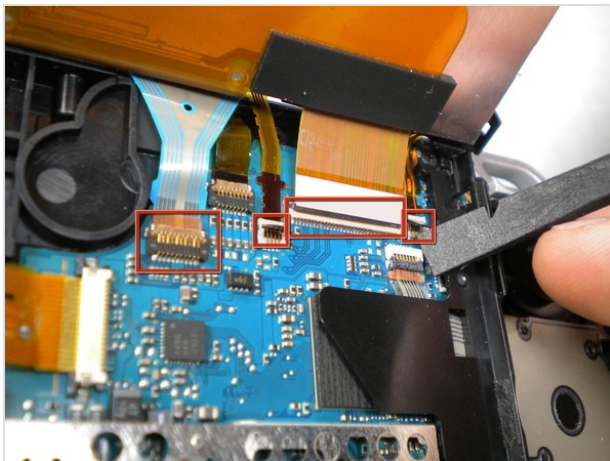
- Push the homebar to the right to release the tab on the right side of the LCD screen.
- DO NOT completely remove the homebar, as it is still connected by ribbon cables.





Step 9

- Slowly begin to lift the LCD screen off the PSP from the top edge.
- Again, the LCD screen is attached by ribbon cables, so do not remove it completely.
- Orientation of PSP flipped in photo



Step 10

- Using a spudger or fingernail, flip the small brown locks on the four ribbon cable connectors up.
- Pull all four ribbon cables out, and remove the LCD screen and homebar from the PSP.



Step 11

- Remove the metal tab that lies above the LCD.
- Upon reassembly, make note that the stamped lettering faces down, and the large tab fits just above the motherboard to the right of the left trigger.



To reassemble your device, follow these instructions in reverse order.