



Installing iBook G4 12" 800 MHz-1.2 GHz RAM

Author: iRobot

Tools used in this guide

- [Anti-Static Wrist Strap](#) (1)
- [Coin](#) (1)
- [Phillips #00 Screwdriver](#) (1)
- [Small Flathead Screwdriver](#) (1)

Parts relevant to this guide

- [PC2100 512 MB RAM Chip](#) (1)
- [PC2700 1 GB RAM Chip](#) (1)

One RAM slot will accept PC2100 or PC2700 chips up to 1 GB.



Step 1 — Battery

- Use a coin to rotate the battery locking screw 90 degrees clockwise.



Step 2

- Lift the battery out of the computer.



Step 3 — Keyboard

- Pull the keyboard release tabs toward you and lift up on the keyboard until it pops free.
- If the keyboard does not come free, use a small flathead screwdriver to turn the keyboard locking screw 180 degrees in either direction and try again.
- Flip the keyboard over, away from the screen, and rest it face-down on the trackpad area.



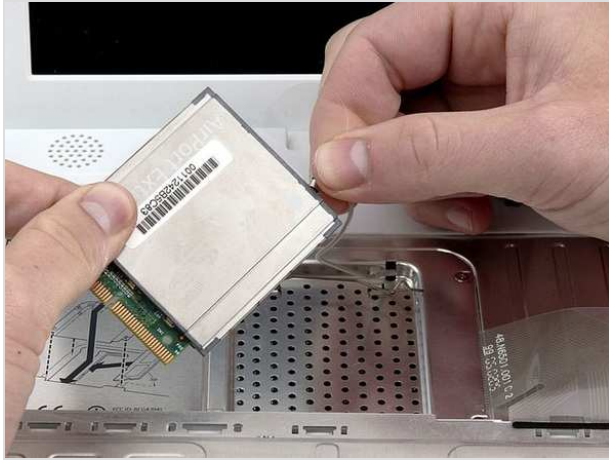
Step 4

- If the computer has an AirPort card installed, follow the next three steps to remove it.
- Push the wire clasp away from the AirPort card and toward the display, then rotate up to free it from the RAM shield.



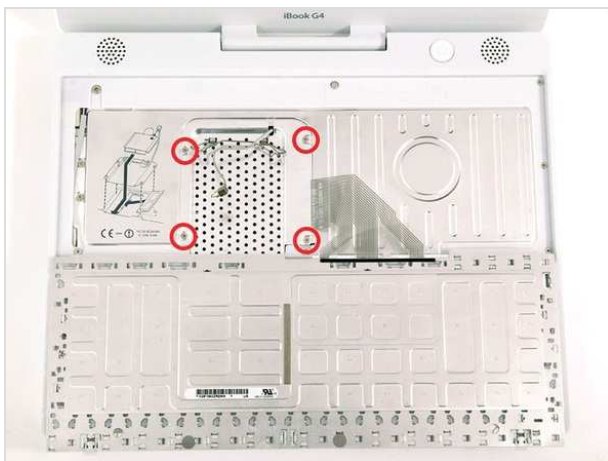
Step 5

- Grasp the clear plastic tab on the AirPort card and pull toward the display.



Step 6

- Hold the AirPort card in one hand and use your other hand to remove the antenna cable.



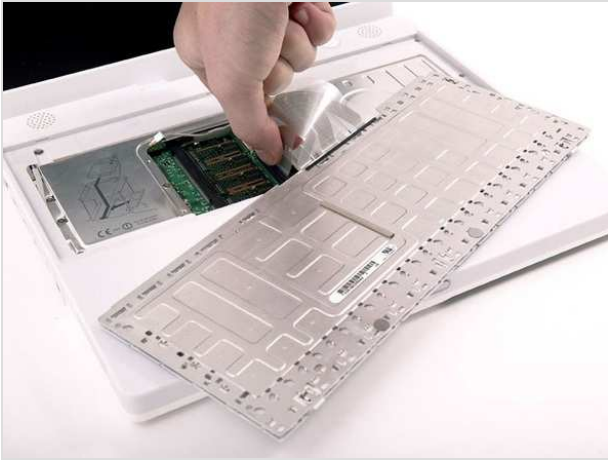
Step 7

- Remove the four silver Phillips screws that secure the RAM shield.



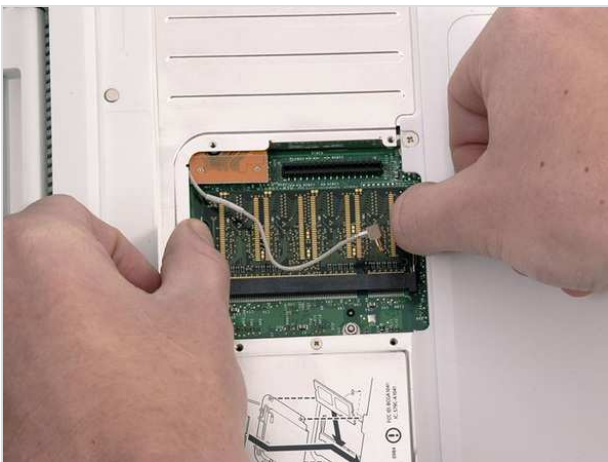
Step 8

- Grasp the metal bracket on top of the RAM shield and pull upward to remove the shield.



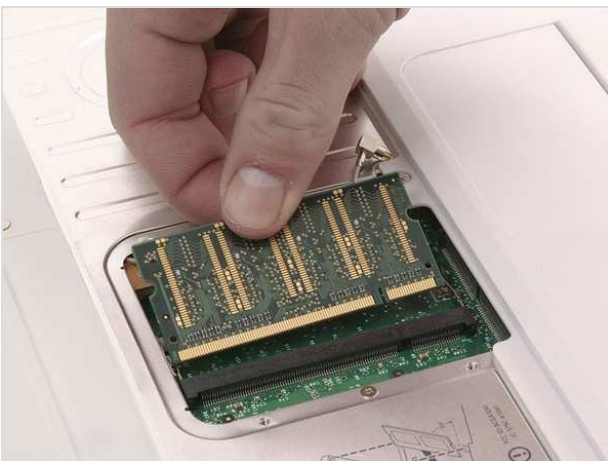
Step 9

- Pull the keyboard cable up from the logic board, holding the cable as close to the connector as possible.
- Make sure that you reconnect the keyboard cable before replacing the RAM shield.



Step 10 — RAM

- Release the tabs on each side of the RAM chip at the same time. These tabs lock the chip in place and releasing them will cause the chip to "pop" up.



Step 11

- Pull the chip directly out from its connectors.


To reassemble your device, follow these instructions in reverse order.

This document was last generated on Feb 23, 2012.


iBook G4 12" Screw Guide




↓



RAM Shield
4 Phillips Screws

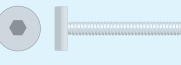


Lower Case (under feet)
3 Phillips




Lower Case
1 Torx


↓




Lower Case
2 Torx



Lower Case (battery compartment)
2 Phillips



Bottom Shield
2 Phillips



Bottom Shield
2 Phillips


↙ ↘



To organize your screws, simply place each screw in the appropriate box as you remove them from your laptop.


If you are not planning on immediately reassembling your laptop, you may want to tape the screws to this paper.

Due to model variations, the screws you remove may differ slightly from this guide.




Fan
4 Phillips

↓



DC-In Board
2 Phillips




Upper Case (battery compartment)
2 Phillips


↓




Upper Case (red)
3 Phillips



Upper Case (orange)
1 Phillips



Upper Case (yellow)
1 Phillips





Upper Case (green)
2 Phillips








↓


 Sleep Light
1 Phillips


 Top Shield (red)
14 Phillips

 Top Shield (orange)
1 Phillips

 Modem
2 Phillips

 Hard Drive
2 Phillips

 Hard Drive Replacement
4 T8 Torx

 Optical Drive (red)
1 Phillips

↙ ↘





To organize your screws, simply place each screw in the appropriate box as you remove them from your laptop.


If you are not planning on immediately reassembling your laptop, you may want to tape the screws to this paper.


Due to model variations, the screws you remove may differ slightly from this guide.


↓


 Optical Drive (orange)
2 Phillips


 Optical Drive (yellow)
1 Phillips

 I/O Bezel
1 Phillips

 I/O Bezel
1 Phillips

 RJ-11 Board
1 Phillips


 Display (data cable)
1 Phillips

 Display (hinge)
2 Phillips


↓




Hinge Grill
2 Phillips




Heat Sink (red)
1 Phillips





Heat Sink (orange)
3 Phillips



Heat Sink (yellow)
1 Phillips





Heat Sink (green)
1 4mm Nut




To organize your screws, simply place each screw in the appropriate box as you remove them from your laptop.

If you are not planning on immediately reassembling your laptop, you may want to tape the screws to this paper.


Due to model variations, the screws you remove may differ slightly from this guide.




Heat Sink (blue)
2 4mm Standoffs




Logic Board (red)
7 Phillips



Logic Board (orange)
1 Phillips



Logic Board (yellow)
2 Phillips



Bluetooth
2 Phillips