



Installing Apple TV 1st Generation Hard Drive

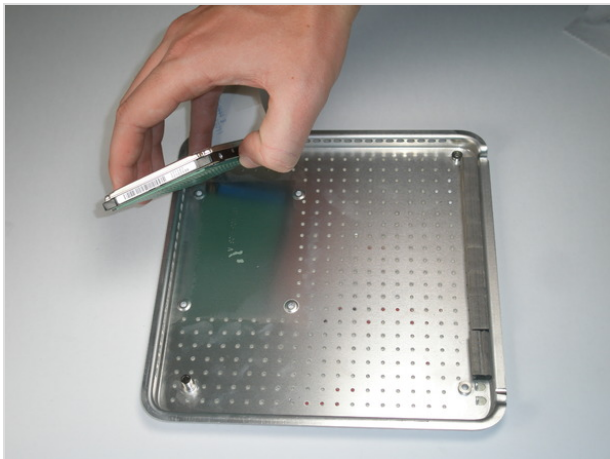
Author: Celerityblur

Replace your hard drive in your Apple TV 1st Generation.





Step 1 — Hard Drive

- Remove the four T8 Torx screws securing the hard drive to the lower case.



Step 2

- Peel and remove the hard drive up off the lower case.
- The hard drive is held on to the lower case with mild adhesive. 
- Disconnect the hard drive data cable from its socket on the hard drive.
- If you are replacing your hard drive, ensure to transfer the hard drive data cable to your new hard drive. 
- Hard drive remains.

To reassemble your device, follow these instructions in reverse order.

This document was last generated on Feb 27, 2012.