



# Installing iBook G3 14" RAM

Author: iRobot

## Tools used in this guide

- [Coin](#) (1)
- [Phillips #00 Screwdriver](#) (1)
- [Small Flathead Screwdriver](#) (1)

## Parts relevant to this guide

- [PC133 256 MB RAM Chip](#) (1)
- [PC133 512 MB RAM Chip](#) (1)

One RAM slot will accept PC100 or PC133 chips up to 512 MB.



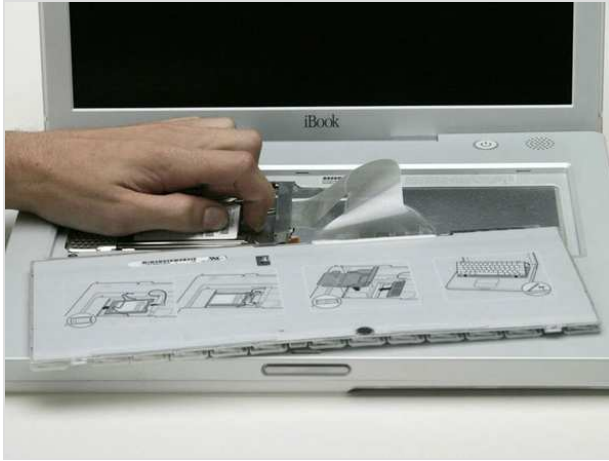
## Step 1 — Battery

- Use a coin to rotate the battery locking screw 90 degrees clockwise.
- Lift the battery out of the computer.



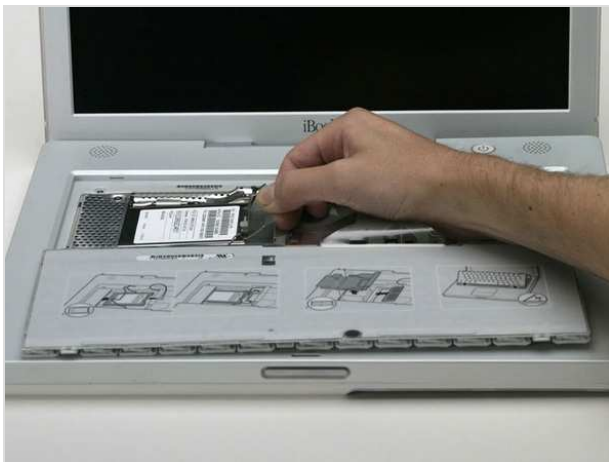
## Step 2 — Keyboard

- Pull the keyboard release tabs (highlighted in red) toward you and lift up on the keyboard until it pops free.
- If the keyboard does not come free, use a small flathead screwdriver to turn the keyboard locking screw 180 degrees in either direction and try again.
- Flip the keyboard over, away from the screen, and rest it face-down on the trackpad area.



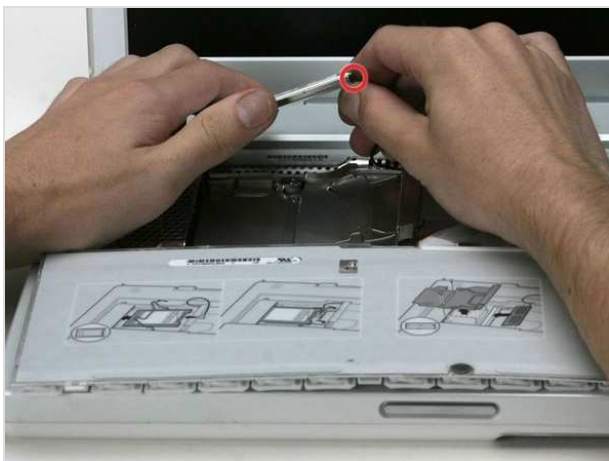
## Step 3

- If your computer does not have an AirPort card installed, skip to the RAM shield removal step.
- Push the wire clasp toward the AirPort card and pull it up to free it from the RAM shield.



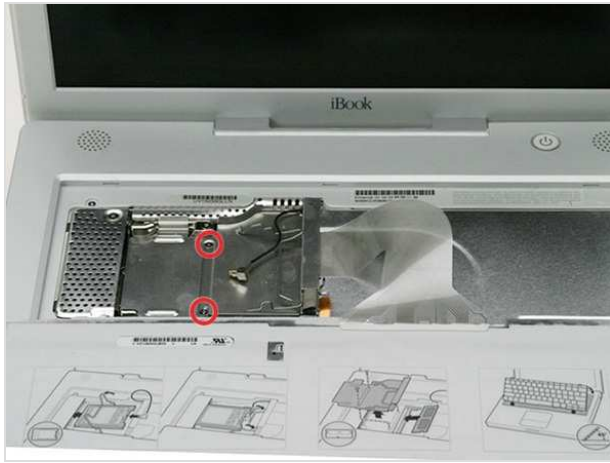
## Step 4

- Grasp the clear plastic tab on the AirPort card and pull toward the right.



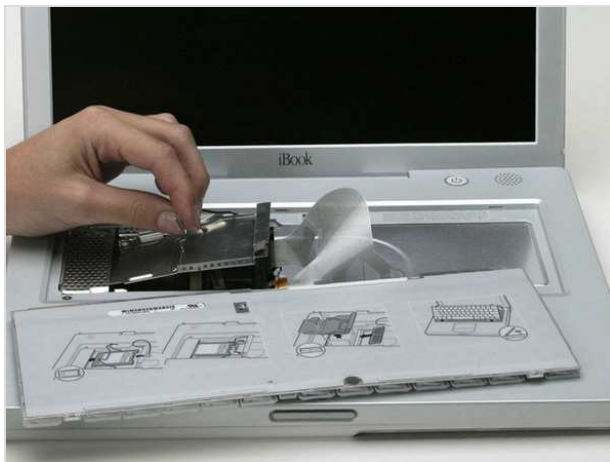
## Step 5

- Hold the AirPort card in one hand and use your other hand to remove the antenna cable.



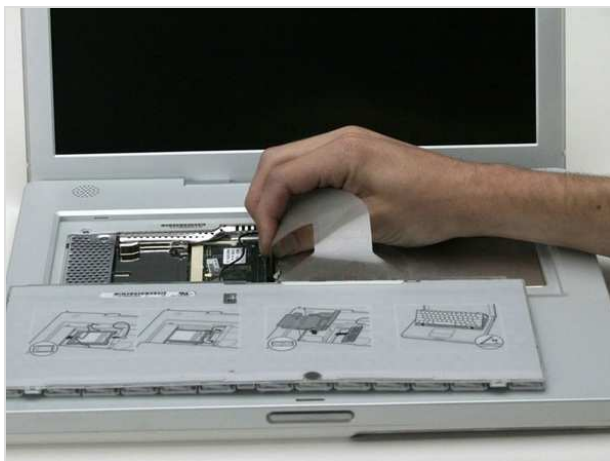
## Step 6

- Remove the two Phillips screws that secure the RAM shield.



## Step 7

- Grasp the metal bracket on top of the RAM shield and pull upward to remove the shield.



## Step 8

- Pull the keyboard cable up from the logic board, holding the cable as close to the connector as possible.



### ***Step 9 — RAM***

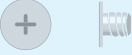
- Release the tabs on each side of the RAM chip at the same time. These tabs lock the chip in place and releasing them will cause the chip to "pop" up.
- Pull the chip directly out from its connectors.

To reassemble your device, follow these instructions in reverse order.

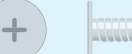
This document was last generated on Feb 23, 2012.




↓



Keyboard  
2 Phillips Screws




Lower Case (under feet)  
3 Phillips




Lower Case  
2 T8 Torx


↓




Lower Case  
1 T8 Torx



Lower Case (battery compartment)  
2 Phillips



Upper Case bottom (red)  
3 Phillips



Upper Case bottom (orange)  
3 Phillips

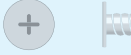
↙ ↘



To organize your screws, simply place each screw in the appropriate box as you remove them from your laptop.


If you are not planning on immediately reassembling your laptop, you may want to tape the screws to this paper.

Due to model variations, the screws you remove may differ slightly from this guide.




Upper Case bottom (yellow)  
3 Phillips


↓



Upper Case top (red)  
2 Phillips




Upper Case top (orange)  
1 Phillips




Bottom Shield (red)  
1 Phillips

↓



Bottom Shield (orange)  
9 Phillips





Fan  
1 Phillips





Top Shield (red)  
5 Phillips









Top Shield (orange)  
3 Phillips

Top Shield (yellow)  
8 Phillips



 

Modem  
2 Phillips



 

Hard Drive  
1 Phillips

HD Replacement  
4 T8 Torx

Optical Drive  
2 Phillips



Optical Drive (cable)  
2 Phillips





To organize your screws, simply place each screw in the appropriate box as you remove them from your laptop.

If you are not planning on immediately reassembling your laptop, you may want to tape the screws to this paper.



Due to model variations, the screws you remove may differ slightly from this guide.



IO Bezel  
1 Phillips



DC-In Board  
1 Phillips



Display (data cable)  
2 Phillips



Display  
2 Phillips

Logic Board (red)  
2 Phillips

Logic Board (orange)  
2 Phillips

Logic Board (yellow)  
1 Phillips



